



Document 20-1245

Type 15 001 Pages 1
Date 4/09/2020 Time 8:53 AM
Rec Amt \$7.00

ARLENE SCHAUF, RECORDER/REGISTRAR
JACKSON COUNTY IOWA

PREPARED BY: MICHAEL J. WEBER, WEBER SURVEYING, LLC, 26789 46TH AVE, BERNARD, IA 52032 (563) 879-4173

UNITED STATES PUBLIC LAND SURVEY CORNER CERTIFICATE OF

LAND SURVEY MONUMENTS SITUATED IN SECTION 3, TOWNSHIP 85 NORTH, RANGE 4 EAST
OF THE FIFTH PRINCIPAL MERIDIAN, JACKSON COUNTY, IOWA.
PREVIOUSLY RECORDED NONE

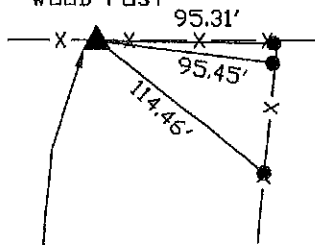
(book, page, document number, etc.)

(Show reason for preparing this certificate, the evidence and detailed procedures used in establishing the corner positions and monumentation found or placed.)

-WEST 1/4 CORNER, NW-SW, SEC. 3, T.85N. R.4E. OF THE 5TH P.M. PLACED 5/8" DIA. REROD W/ORANGE PLASTIC CAP NO. 15084. ESTABLISHED CORNER AT THE INTERSECTION OF THE FENCELINE RUNNING EAST & WEST WITH THE CALCULATED WEST LINE OF SECTION 3.
-SW CORNER, NW-SW, SEC. 3, T.85N. R.4E. OF THE 5TH P.M. PLACED 5/8" DIA. REROD W/ORANGE PLASTIC CAP NO. 15084. ESTABLISHED CORNER AT THE INTERSECTION OF THE FENCELINE RUNNING EAST AND NORTH.

(Show a minimum of three reference ties to durable physical objects, relevant monuments and physical conditions that will enable recovery of the corner.)

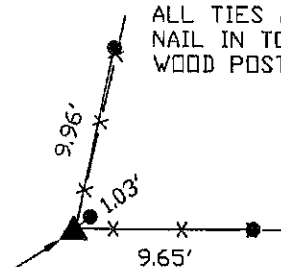
ALL TIES ARE MAG
NAIL IN TOP OF
WOOD POST



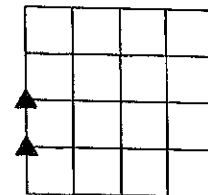
WEST 1/4 COR., SEC. 3,
T.85N, R.4E. OF THE 5TH
P.M. PLACED 5/8" DIA.
REROD W/ORANGE
PLASTIC CAP NO. 15084

PLAN - VIEW

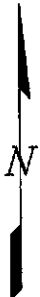
ALL TIES ARE MAG
NAIL IN TOP OF
WOOD POST



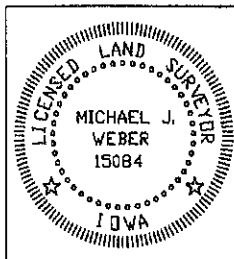
SW COR., NW-SW, SEC.
3, T.85N, R.4E. OF THE
5TH P.M. PLACED 5/8"
DIA. REROD W/ORANGE
PLASTIC CAP NO. 15084



DRAWING NOT TO SCALE



DWG. NO. 20037 - KNAKE



I HEREBY CERTIFY THAT THIS LAND SURVEYING DOCUMENT WAS
PREPARED AND THE RELATED SURVEY WORK WAS PERFORMED BY ME OR
UNDER MY DIRECT PERSONAL SUPERVISION AND THAT I AM A DULY
LICENSED LAND SURVEYOR UNDER THE LAWS OF THE STATE OF IOWA.

MICHAEL J. WEBER
LICENSE NUMBER 15084

MY LICENSE RENEWAL DATE IS DECEMBER 31, 2021

SHEETS COVERED BY THIS SEAL: THIS SHEET

List Corners to be Indexed

Corner	Sec	Twp	Range
WEST 1/4 COR.	3	85N	4E
SW COR. NW-SW	3	85N	4E



Document 22-1244

Type 15 001

Pages 1

Date 4/04/2022 Time 11:06 AM

Rec Amt \$7.00

ARLENE SCHAUF, RECORDER/REGISTRAR
JACKSON COUNTY IOWA

PREPARED BY: MICHAEL J. WEBER, WEBER SURVEYING, LLC, 26789 46TH AVE, BERNARD, IA 52032 (563) 879-4173

UNITED STATES PUBLIC LAND SURVEY CORNER CERTIFICATE OF

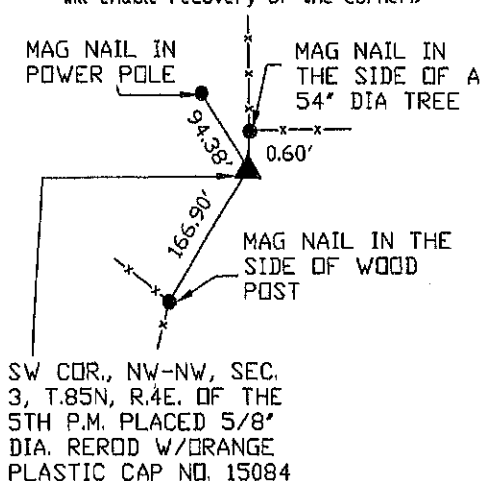
LAND SURVEY MONUMENTS SITUATED IN SECTION 3, TOWNSHIP 85 NORTH, RANGE 4 EAST
OF THE FIFTH PRINCIPAL MERIDIAN, JACKSON COUNTY, IOWA.
PREVIOUSLY RECORDED NONE

(book, page, document number, etc.)

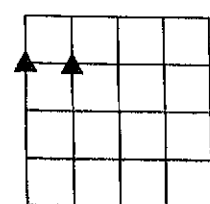
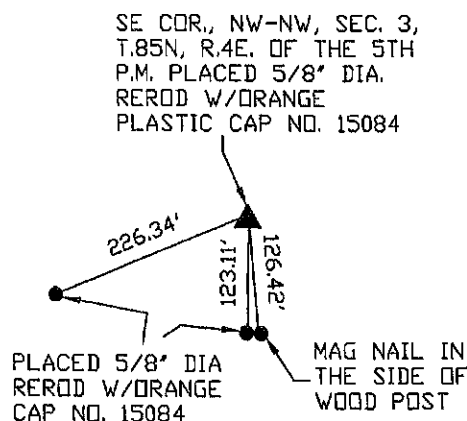
(Show reason for preparing this certificate, the evidence and detailed procedures used in establishing the corner positions and monumentation found or placed.)

-SE CORNER, NW-NW, SEC. 3, T.85N. R.4E. OF THE 5TH P.M. PLACED 5/8" DIA. REROD W/ORANGE PLASTIC CAP NO. 15084. ESTABLISHED CORNER AT THE INTERSECTION OF THE PROJECTED FENCELINE FROM THE SOUTH & EAST.
-SW CORNER, NW-NW, SEC. 3, T.85N. R.4E. OF THE 5TH P.M. PLACED 5/8" DIA. REROD W/ORANGE PLASTIC CAP NO. 15084. ESTABLISHED CORNER AT THE INTERSECTION OF THE FENCELINE RUNNING EAST AND NORTH.

(Show a minimum of three reference ties to durable physical objects, relevant monuments and physical conditions that will enable recovery of the corner.)

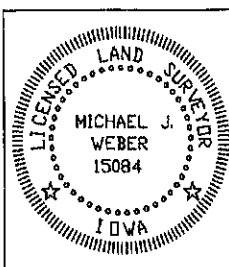


PLAN - VIEW



DRAWING NOT TO SCALE

DWG. NO. 22024



I HEREBY CERTIFY THAT THIS LAND SURVEYING DOCUMENT WAS PREPARED AND THE RELATED SURVEY WORK WAS PERFORMED BY ME OR UNDER MY DIRECT PERSONAL SUPERVISION AND THAT I AM A DULY LICENSED LAND SURVEYOR UNDER THE LAWS OF THE STATE OF IOWA.

Michael J. Weber April 4, 2022
MICHAEL J. WEBER (DATE)

LICENSE NUMBER 15084

MY LICENSE RENEWAL DATE IS DECEMBER 31, 2023

SHEETS COVERED BY THIS SEAL: THIS SHEET

List Corners to be Indexed

Corner	Sec	Twp	Range
SE COR. NW-NW	3	85N	4E
SW COR. NW-NW	3	85N	4E