

99 4712

FILE NO. 1 PAGE 404

SLSI 9-94

UNITED STATES PUBLIC LAND SURVEY CORNER CERTIFICATE

OF

PHYLLIS M. GERLACH
JACKSON COUNTY, IOWA # 6

REORDER.

Land Survey Monuments situated in Section 34, Township 85 N., Range 4 E., of the Fifth Principal Meridian, Jackson County, Iowa.
Previously recorded in _____ in County Recorder's Office.

(book, page, document number, etc.)

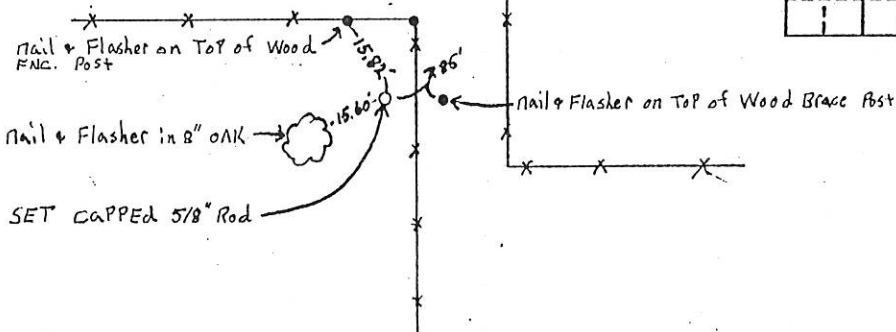
(Show reason for preparing this certificate, the evidence and detailed procedures used in establishing the corner positions and monumentation found or placed.)

Monument Description and Remarks: SET 5/8" Capped rods at Prorata locations using
existing monumentation, Fences and Occupation within this
and adjoining Sections.

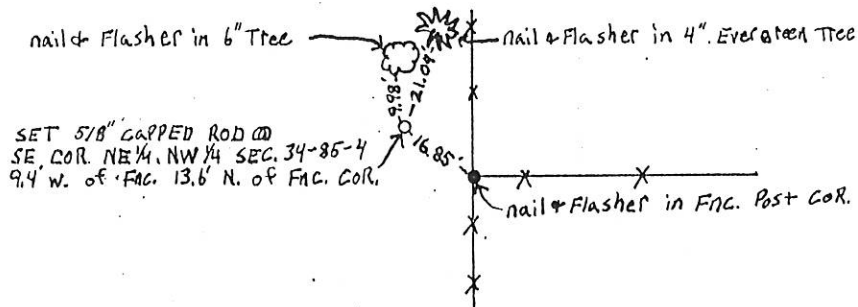
PLAN - VIEW

(Show a minimum of three reference ties to durable physical objects, relevant monuments and physical conditions that will enable recovery of the corner.)

SE COR. NE 1/4, NW 1/4 SEC. 34-85-4



SW COR. NE 1/4, NW 1/4 SEC. 34-85-4



I hereby certify that the survey work was completed and this land surveying document was prepared by me or under my direct personal supervision and that I am a duly registered land surveyor under the laws of the state of Iowa

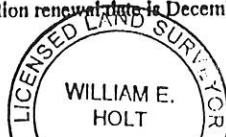
Signature: William E. Holt

Name typed or printed:

William E. Holt, PLS

Date: 11/22/99 Reg. No. 14105My registration renewal date is December 31, 2000

SEAL



Corners	List Corners to be Indexed	Section	Twp	Range
SE Corner	NE 1/4 NW 1/4	34	T85N	R4E
SW Corner	NE 1/4 NW 1/4	34	T85N	R4E