



Document 12-880

Book 3 Page 41 Type 15 001 Pages 1
Date 2/29/2012 Time 3:30 PM
Rec Amt \$7.00

ARLENE SCHAUF, RECORDER/REGISTRAR
JACKSON COUNTY IOWA

Prepared by Wm. Burger LandSurveyor 510 3rd Street West Court, Worthington, Iowa 52078 Phone 563 - 855 2028

UNITED STATES PUBLIC LAND SURVEY CORNER CERTIFICATE

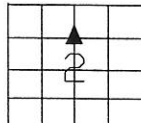
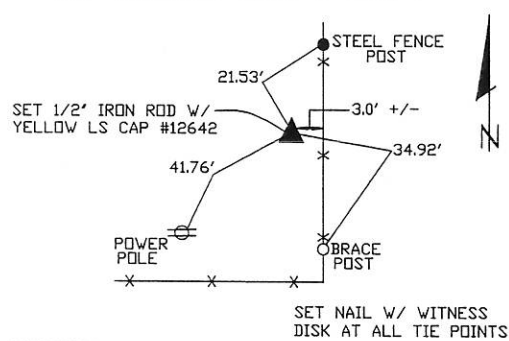
Land Survey Monuments situated in Section 2, Township 85N, Range 4E, of the Fifth Principal Meridian, Jackson County, Iowa. Previously recorded in N/A in the Office of the County Recorder

Monument Description and Remarks: (No Corner Certificates found at the County Recorders Office)

NW CORNER SW1/4 NE1/4 - SET 1/2" IRON ROD W/ YELLOW LS CAP #12642 - SET MIDWAY BETWEEN N1/4 CORNER AND THE CALCULATED CENTER OF SECTION AND USED INFORMATION FROM PLAT RECORDED IN THE OFFICE OF THE JACKSON COUNTY RECORDER IN PLAT BOOK 1-F, PAGE 21 TO SET THIS CORNER

PLAN VIEW

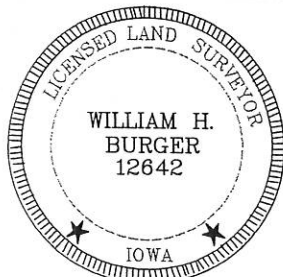
NW CORNER SW1/4 NE1/4



SEC. 2 TWP. 85N RANGE 4E

CORNERS TO BE INDEXED

NW CORNER SW1/4 NE1/4 2 85N 4E



I hereby certify that this land surveying document was prepared and related survey work was performed by me or under my direct personal supervision and that I am a duly licensed Land Surveyor under the laws of the State of Iowa.

William H. Burger 2/29/12
William H. Burger Date

License number 12642

My license renewal date is December 31, 2012

Pages or Sheets covered by this seal: Sheet 1 of 1