

FILE NO. 04-1286
BOOK 2 PAGE 350

04 MAR 29 PM 12:56

PHYLLIS M. GERLACH
JACKSON COUNTY, IOWA
RECORDER

Prepared by Wm. Burger LandSurveyors

510 3rd Street West Court, Worthington, Iowa

Phone 563 - 855 2028

Fee \$11.00

UNITED STATES PUBLIC LAND SURVEY CORNER CERTIFICATE

Land Survey Monuments situated in Section 29, Township 85N, Range 4E, of the Fifth Principal Meridian, Jackson County, Iowa. Previously recorded in N/A in the Office of the County Recorder

Monument Description and Remarks: (No Corner Certificates found at the County Recorders Office)

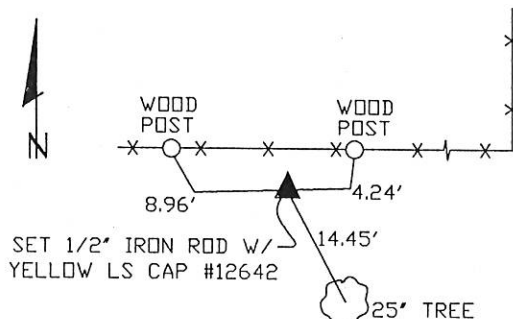
SW CORNER NW1/4 NW1/4 - SET 1/2" IRON ROD W/YELLOW LS CAP #12642 - SET ON LINE BETWEEN THE NW CORNER AND THE W1/4 CORNER AND USED EXISTING FENCELINE EVIDENCE TO THE EAST AND SET AT POINT OF INTERSECTION

SE CORNER NW1/4 NW1/4 - SET 1/2" IRON ROD W/YELLOW LS CAP #12642 - RUN STRAIGHT LINES FROM OPPOSITE 1/4 1/4 CORNERS AND SET AT POINT OF INTERSECTION

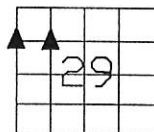
NOTE: METAL DETECTED BOTH AREAS BUT NOTHING WAS FOUND; THERE IS NO PREVIOUS RECORD OF ANYTHING BEING SET AT EITHER CORNER

PLAN VIEW

SW CORNER NW1/4 NW1/4

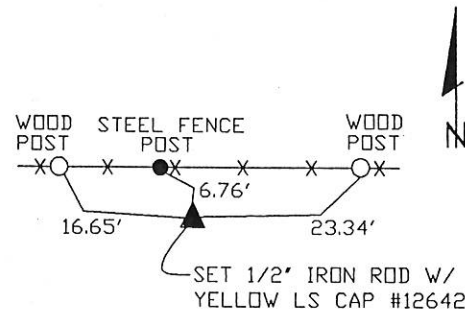


SET WITNESS CAP
AT ALL TIE POINTS



SEC. 29 TWP. 85N RANGE 4E

SE CORNER NW1/4 NW1/4



SET WITNESS CAP
AT ALL TIE POINTS

CORNERS TO BE INDEXED

SW CORNER NW1/4 NW1/4 29 85N 4E

SE CORNER NW1/4 NW1/4 29 85N 4E



I hereby certify that this land surveying document was prepared and related survey work was performed by me or under my direct personal supervision and that I am a duly licensed Land Surveyor under the laws of the State of Iowa.

William H. Burger 1/24/04
William H. Burger Date

License number 12642

My license renewal date is December 31, 2004

Pages or Sheets covered by this seal: Sheet 1 of 1