



Document 13-58

Book 3 Page 73 Type 15 001 Pages 1  
Date 1/04/2013 Time 11:23 AM  
Rec Amt \$7.00

ARLENE SCHAUF, RECORDER/REGISTRAR  
JACKSON COUNTY IOWA

Prepared by: SCHNEIDER Land Surveying and Planning, Inc. P.O. Box 128 Farley, Iowa 52046 563-744-3631

## UNITED STATES PUBLIC LAND SURVEY CORNER CERTIFICATE OF

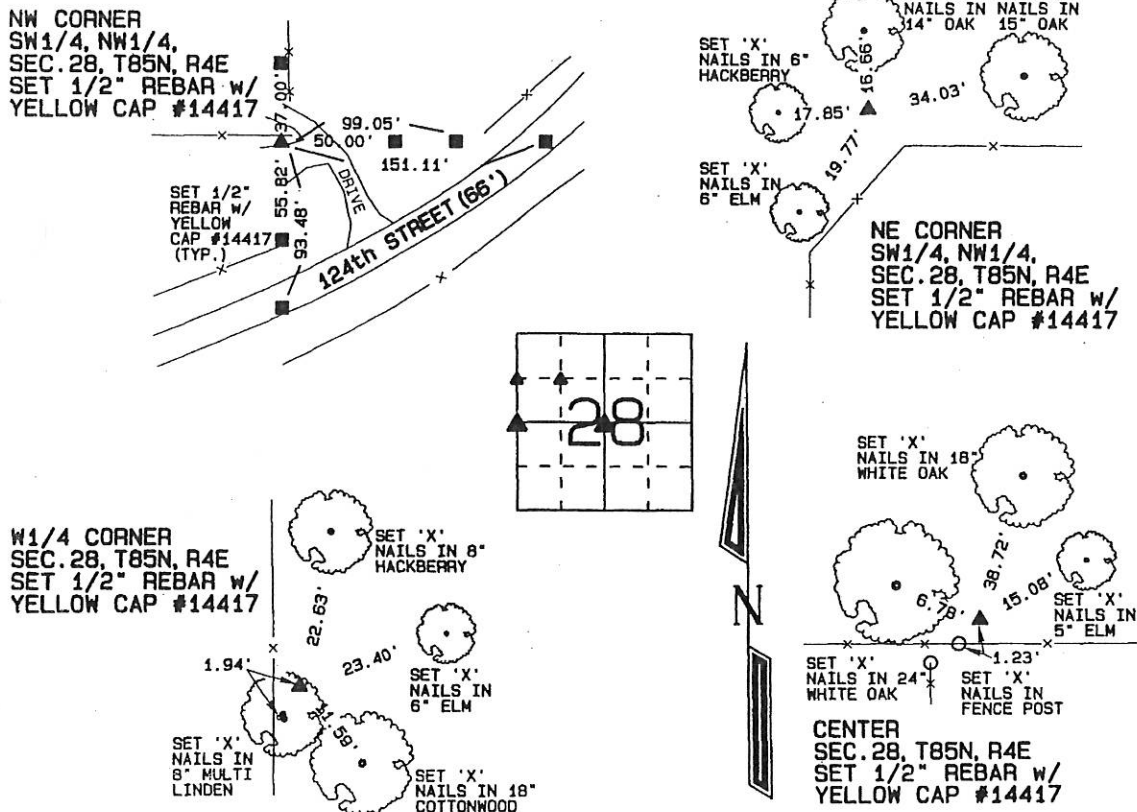
Land Survey Monuments situated in Section 28, Township 85 North, Range 4 East  
of the Fifth Principal Meridian, Jackson County, Iowa.  
Previously recorded (NONE OF RECORD)

(Show reason for preparing this certificate, the evidence and detailed procedures used in establishing the corner positions and monumentation found or placed.)

Monument Description and Remarks: THE NW CORNER OF THE SW1/4 OF THE NW1/4 OF SECTION 28, T85N, R4E WAS ESTABLISHED ON A LINE FROM THE NW CORNER TO THE W1/4 CORNER OF SAID SECTION 28 AND BY USING OCCUPATION EVIDENCE LOCATED TO THE EAST AND WEST. THE NE CORNER OF THE SW1/4 OF THE NW1/4 OF SECTION 28, T85N, R4E WAS ESTABLISHED AT THE THEORETICAL CENTER OF THE NW1/4 OF SAID SECTION 28. THE W1/4 CORNER OF SECTION 28, T85N, R4E WAS ESTABLISHED IN LINE WITH OCCUPATION EVIDENCE NORTH AND EAST OF THE CORNER. THE CENTER OF SECTION 28, T85N, R4E WAS ESTABLISHED USING OCCUPATION EVIDENCE LOCATED SOUTH, EAST AND WEST OF THE CORNER.

### PLAN - VIEW

(Show a minimum of three reference ties to durable physical objects, relevant monuments and physical conditions that will enable recovery of the corner.)



I hereby certify that this land surveying document was prepared and the related survey work was performed by me or under my direct personal supervision and that I am a duly licensed Land Surveyor under the laws of the State of Iowa.

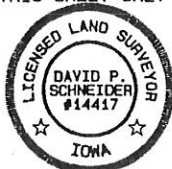
*David P. Schneider* 12/30/2012  
David P. Schneider P.L.S. #14417 Date: 12/30/2012

My license renewal date is December 31, 2013.

Pages or sheets covered by this seal: THIS SHEET ONLY

**SCHNEIDER**  
Land Surveying & Planning, Inc.

P.O. Box 128 Farley, Iowa 52046  
Ph. #563-744-3631 Fax #563-744-3629



#### List Corners to be Indexed

Corners	Section	Twp	Range
NW CORNER SW1/4, NW1/4	28	85N	4E
NE CORNER SW1/4, NW1/4	28	85N	4E
W1/4 CORNER	28	85N	4E
CENTER	28	85N	4E

JOB NO. 1702