

UNITED STATES PUBLIC LAND SURVEY CORNER CERTIFICATE

OF

Land Survey Monuments situated in Section 26, Township 85, Range 4, of the Fifth Principal Meridian, JACKSON County, Iowa.
Previously recorded in _____ in County Recorder's Office.

(book, page, document number, etc.)
(Show reason for preparing this certificate, the evidence and detailed procedures used in establishing the corner positions and monumentation found or placed.)

Monument Description and Remarks: NOTE: ALL MONUMENTS FOUND

W 1/4 COR. = 1/2" CAPPED ROD

E 1/4 COR. = 1 1/4" PIPE, 4' south of F.L. to WEST, IN LINE W/F.L. to EAST & 4' WEST of ϕ .

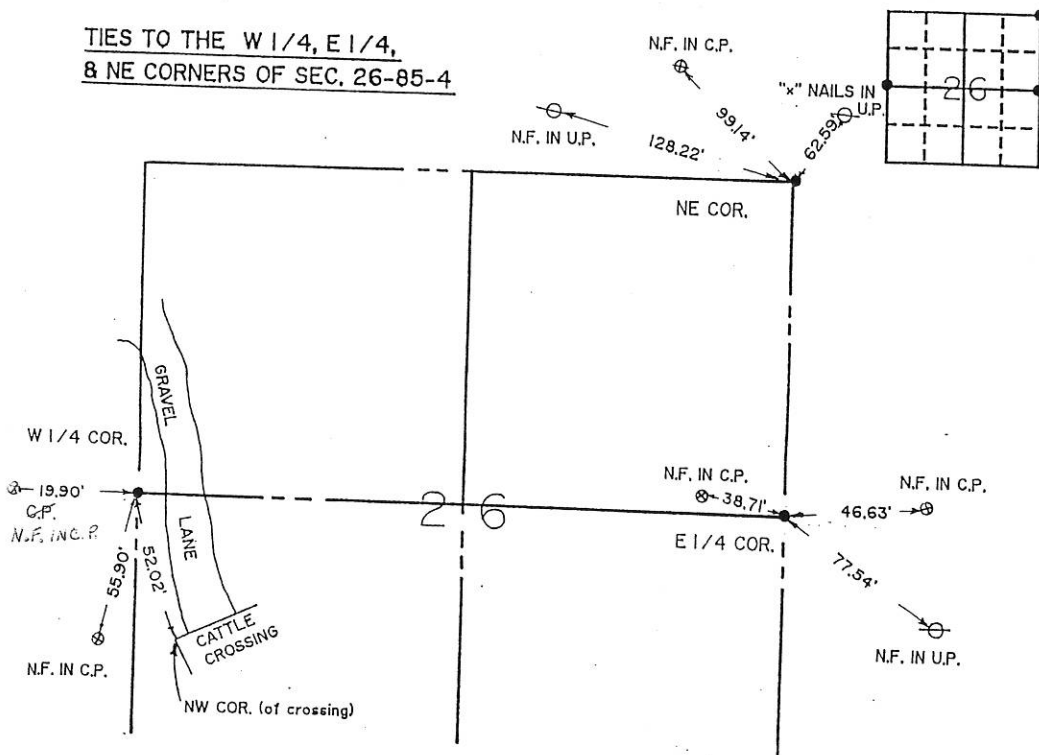
N.E. COR. = 1/2" SQUARE PIN, 12' SOUTH of ϕ to WEST, & 1' WEST of N/S ϕ .

N.F. = NAIL AND FLASHER C.P. = CORNER POST F.L. = FENCE LINE

PLAN - VIEW

(Show a minimum of three reference ties to durable physical objects, relevant monuments and physical conditions that will enable recovery of the corner.)

TIES TO THE W 1/4, E 1/4, & NE CORNERS OF SEC. 26-85-4

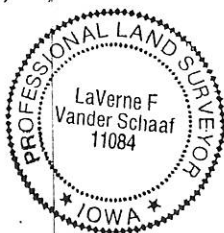


I hereby certify that the survey work was completed and this certificate was prepared by me or under my direct personal supervision and that I am a duly registered land surveyor under the laws of the state of Iowa.

Signature: LaVerne F. Vander Schaaf
Name typed or printed: LAVERNE F. VANDER SCHAAF

Date: 3/23/93 Reg. No. 11084

SEAL



Corners	List Corners to be Indexed	Section	Twp	Range
NE COR.	26	85	4	
E 1/4 COR.	26	85	4	
W 1/4 COR.	26	85	4	

FILE NO. 002655
BOOK 1 PAGE 133

1993 MAR 25 AM 10:22

SHIRLY RITENOUR
JACKSON COUNTY, IOWA
RECORDER

See 5.00

Recorder's Note: See Also BK 1 Pg 600
2-26-93 See Record Book 1 Page 600.

UNITED STATES PUBLIC LAND SURVEY CORNER CERTIFICATE

OF

Land Survey Monuments situated in Section TWENTY-SIX (26), Township 85 NORTH, Range 4 EAST, of the Fifth Principal Meridian, JACKSON County, Iowa.
 Previously recorded in N/A in County Recorder's Office.
 (book, page, document number, etc.)

(Show reason for preparing this certificate, the evidence and detailed procedures used in establishing the corner positions and monumentation found or placed.)

Monument Description and Remarks: SET 5/8" CAPPED ROD ONE-FOURTH

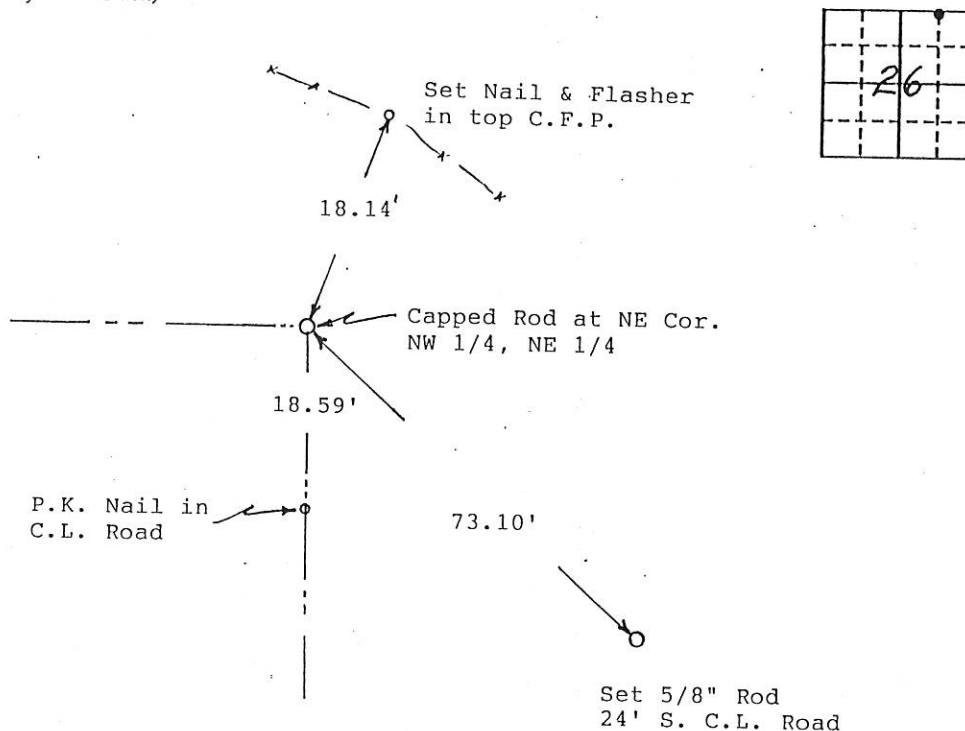
THE TOTAL DISTANCE FROM THE NORTHEAST CORNER OF SECTION 26

TO THE NORTHWEST CORNER OF SECTION. (SECTION CORNERS

PREVIOUSLY RECORDED) CORNER WAS SET FOR "DOYLE SUBDIVISION".

PLAN - VIEW

(Show a minimum of three reference ties to durable physical objects, relevant monuments and physical conditions that will enable recovery of the corner.)



#97006

I hereby certify that the survey work was completed and this land surveying document was prepared by me or under my direct personal supervision and that I am a duly registered land surveyor under the laws of the state of Iowa

Signature: LaVerne F. VanderSchaff
 Name typed or printed: LaVerne F. VanderSchaff

Date: 2/5/97 Reg. No. 11084

My registration renewal date is December 31, 1998

SEAL



Corners	List Corners to be Indexed	Section	Twp	Range
NE Cor.	NW 1/4, NE 1/4	26	85	4

FILE NO. 97 344
 BOOK 1 PAGE 307

1997 FEB 10 AM 10:05

SHIRLY RITEHOUR
 JACKSON COUNTY, IOWA
 RECORDER

BOOK 1 PAGE 307

fee 6.00