

FILE NO. 03-1048
BOOK 1 PAGE 600
03 FEB 26 AM 11:27

IHW ENGINEERS & SURVEYORS, P.C., 4155 PENNSYLVANIA AVE., DUBUQUE, IOWA, 52002
JACKSON COUNTY, IOWA

UNITED STATES PUBLIC LAND SURVEY CORNER RECORD

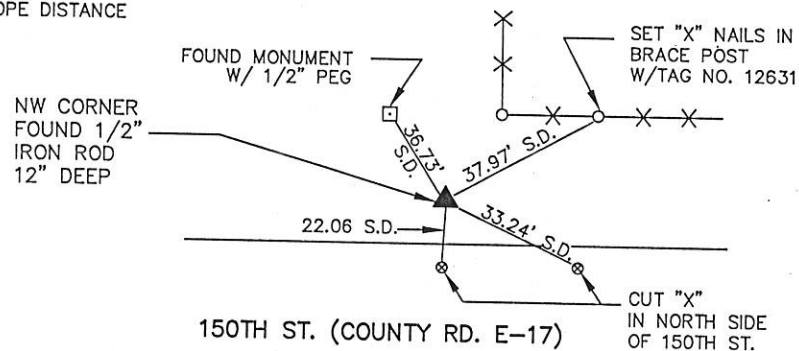
LAND SURVEY MONUMENTS SITUATED IN SECTION 24, TOWNSHIP 85 NORTH, RANGE 4 EAST
OF THE FIFTH PRINCIPAL MERIDIAN, JACKSON COUNTY, IOWA.
PREVIOUSLY RECORDED IN BK 1, PG 133 & BK 1, PG. 284 IN COUNTY RECORDER'S OFFICE.

MONUMENT DESCRIPTION AND REMARKS:

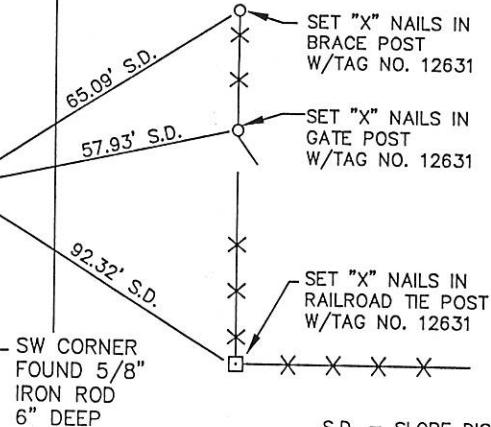
NW CORNER, SECTION 24, T85N, R4E - FOUND 1/2" IRON ROD, 12" DEEP (PREVIOUSLY SHOWN AS FOUND
SW CORNER, SECTION 24, T85N, R4E - FOUND 5/8" IRON ROD, 6" DEEP CONCRETE MONUMENT ON
ACQUISITION PLAT)

PLAN - VIEW

S.D. = SLOPE DISTANCE



ABANDONED ROAD
OLD COUNTY ROAD Z-20



I HEREBY CERTIFY THAT THIS LAND SURVEYING DOCUMENT WAS PREPARED
AND THE RELATED SURVEY WORK WAS PERFORMED BY ME OR UNDER MY
DIRECT PERSONAL SUPERVISION AND THAT I AM A DULY LICENSED LAND
SURVEYOR UNDER THE LAWS OF THE STATE OF IOWA.

FOR IHW ENGINEERS AND SURVEYORS, P.C.

JOHN M. TRANMER
DATE 2-25-03

LICENSE NO. 12631 MY LICENSE RENEWAL DATE IS 12/31/2004

LIST CORNERS TO BE INDEXED

CORNERS	SECTION	TWP	RANGE
SW CORNER	24	T85N	R4E
NW CORNER	24	T85N	R4E



IHW ENGINEERS &
SURVEYORS, P.C.

DUBUQUE, IOWA
4155 PENNSYLVANIA AVE. DUBUQUE, IA 52002 (563) 556-2464

MONUMENT RECORD

COUNTY: JACKSON
TOWNSHIP: JACKSON

DATE: 02-04-03
REVISED:

FIELD
BOOK NO. 383

PROJ.
NO. 01231-02

INDEX
NO.

FILE NO. 03-1049
BOOK 1 PAGE 601

03 FEB 26 AM 11:27

IIW ENGINEERS & SURVEYORS, P.C., 4155 PENNSYLVANIA AVE., DUBUQUE, IOWA, 52002

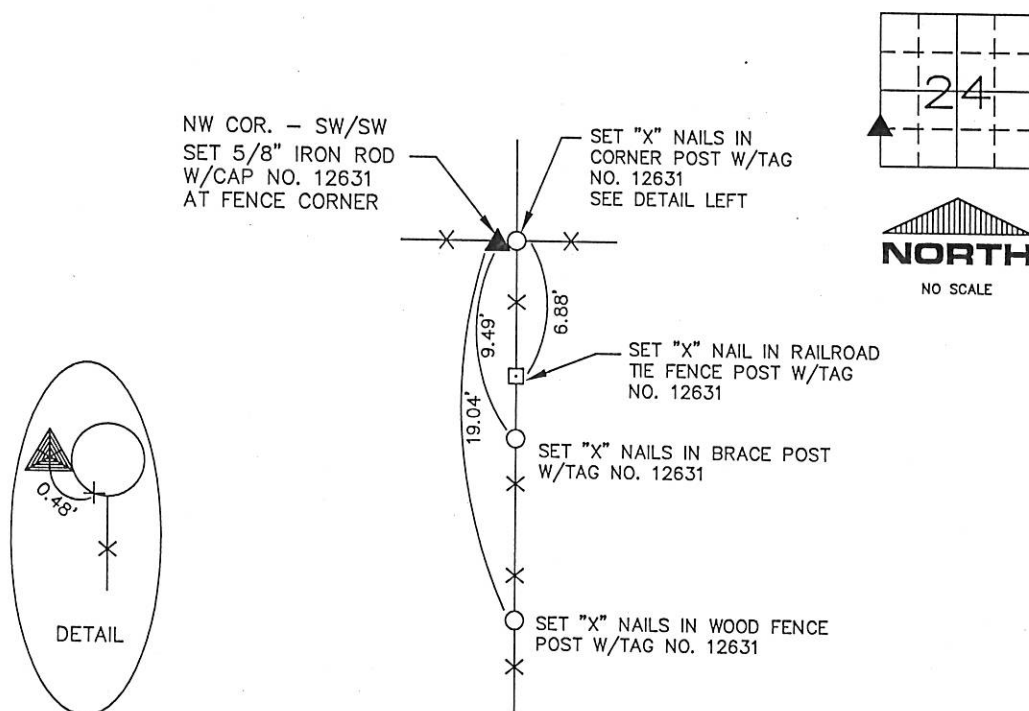
UNITED STATES PUBLIC LAND SURVEY CORNER

LAND SURVEY MONUMENTS SITUATED IN SECTION 24, TOWNSHIP 85 NORTH, RANGE 4 EAST
OF THE FIFTH PRINCIPAL MERIDIAN, JACKSON COUNTY, IOWA.
PREVIOUSLY RECORDED IN NO CERTIFICATE ON FILE IN COUNTY RECORDER'S OFFICE.

MONUMENT DESCRIPTION AND REMARKS:

NW CORNER SW1/4-SW1/4, SECTION 24, T85N, R4E - SET 5/8" IRON ROD W/CAP NO. 12631 AT FENCE CORNER

PLAN - VIEW



I HEREBY CERTIFY THAT THIS LAND SURVEYING DOCUMENT WAS PREPARED
AND THE RELATED SURVEY WORK WAS PERFORMED BY ME OR UNDER MY
DIRECT PERSONAL SUPERVISION AND THAT I AM A DULY LICENSED LAND
SURVEYOR UNDER THE LAWS OF THE STATE OF IOWA.

FOR IIW ENGINEERS AND SURVEYORS, P.C.

John M. Tranmer 2-25-03
JOHN M. TRANMER DATE

LICENSE NO. 12631 MY LICENSE RENEWAL DATE IS 12/31/2004

LIST CORNERS TO BE INDEXED

CORNERS	SECTION	TWP	RANGE
NW COR. SW1/4-SW1/4	24	T85N	R4E



IIW ENGINEERS &
SURVEYORS, P.C.

DUBUQUE, IOWA
4155 PENNSYLVANIA AVE. DUBUQUE, IA 52002 (563) 556-2464

MONUMENT RECORD

COUNTY: JACKSON
TOWNSHIP: JACKSON

DATE:	FIELD	PROJ.	INDEX
02-04-03	BOOK NO. 383	NO. 01231-02	NO.



Document 07-1795

Book 2 Page 557 Type 15 001 Pages 1

Date 4/10/2007 Time 10:40 AM

Rec Amt \$7.00

ARLENE SCHAUF, RECORDER
JACKSON COUNTY IOWA

PREPARED BY: MICHAEL J. WEBER, WEBER SURVEYING, LLC, 26789 46TH AVE, BERNARD, IA 52032 (563) 879-4173

UNITED STATES PUBLIC LAND SURVEY CORNER CERTIFICATE
OFLAND SURVEY MONUMENTS SITUATED IN SECTION 24, TOWNSHIP 85 NORTH, RANGE 4 EAST
OF THE FIFTH PRINCIPAL MERIDIAN, JACKSON COUNTY, IOWA.PREVIOUSLY RECORDED NONE UNLESS OTHERWISE NOTED

(book, page, document number, etc.)

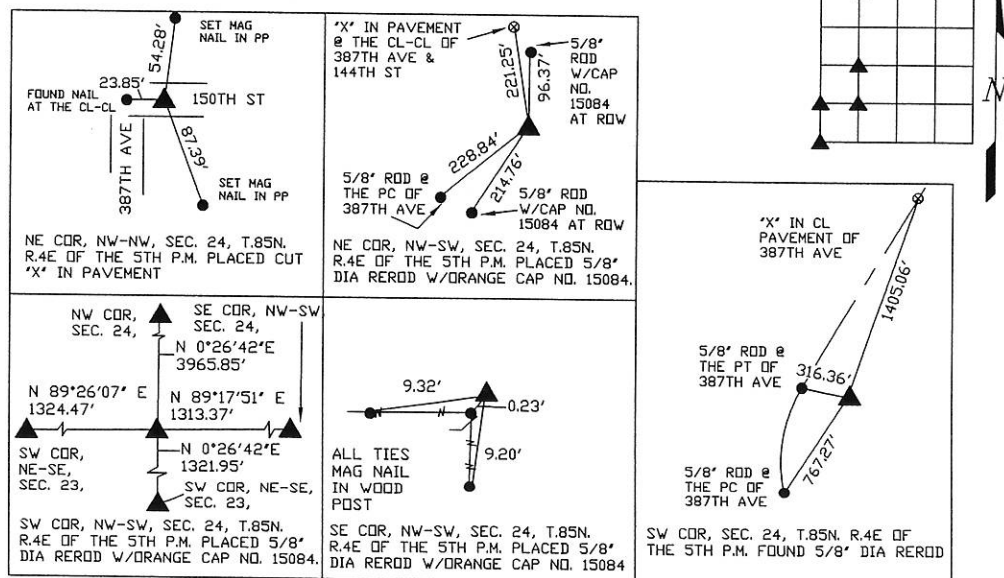
(Show reason for preparing this certificate, the evidence and detailed procedures used in establishing the corner positions and monumentation found or placed.)

Monument Description and Remarks:

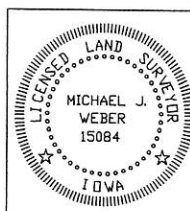
-NE COR, NW-NW, SEC. 24, T.85N. R.4E OF THE 5TH P.M. PLACED CUT "X" IN PAVEMENT 1/4 THE DISTANCE AND ONLINE FROM THE NW CORNER TO THE NE CORNER OF SEC. 24
-NE COR, NW-SW, SEC. 24, T.85N. R.4E OF THE 5TH P.M. PLACED 5/8" DIA REROD W/ORANGE CAP NO. 15084. ESTABLISHED CORNER USING EXISTING OCCUPATION FENCELINE
-SE COR, NW-SW, SEC. 24, T.85N. R.4E OF THE 5TH P.M. PLACED 5/8" DIA REROD W/ORANGE CAP NO. 15084. ESTABLISHED CORNER USING EXISTING OCCUPATION FENCELINE CORNER
-SW COR, NW-SW, SEC. 24, T.85N. R.4E OF THE 5TH P.M. PLACED 5/8" DIA REROD W/ORANGE CAP NO. 15084. ESTABLISHED CORNER 1/4 THE DISTANCE AND ONLINE FROM THE SW CORNER TO THE NW CORNER OF SEC. 24
-SW COR, SEC. 24, FOUND 5/8" DIA REROD AS SHOWN IN SEC. COR. CERT. BOOK 1 PAGE 600.
ESTABLISHED NEW TIES

(Show a minimum of three reference ties to durable physical objects, relevant monuments and physical conditions that will enable recovery of the corner.)

PLAN - VIEW



DWG. NO. CLASEN



I HEREBY CERTIFY THAT THIS LAND SURVEYING DOCUMENT WAS
PREPARED AND THE RELATED SURVEY WORK WAS PERFORMED BY ME OR
UNDER MY DIRECT PERSONAL SUPERVISION AND THAT I AM A DULY
LICENSED LAND SURVEYOR UNDER THE LAWS OF THE STATE OF IOWA.

Michael J. Weber *April 9, 2007*
MICHAEL J. WEBER (DATE)
LICENSE NUMBER 15084
MY LICENSE RENEWAL DATE IS DECEMBER 31, 2007

SHEETS COVERED BY THIS SEAL: 1

List Corners to be Indexed

Corner	Sec	Twp	Range
NE COR. NW-NW	24	85N	4E
NE COR. NW-SW	24	85N	4E
SE COR. NW-SW	24	85N	4E
SW COR. NW-SW	24	85N	4E
SW COR.	24	85N	4E