

25 NW COR 21-85-4E

126° 3'

156° 2'

271° 5'

301° 18'

2° 50'

3° 11'

3° 59'

spk

Apple Tree

Trans brace pole

bet Cont? Monument

Set 6'x6'x33" concrete

over 5 1/2' x 29" iron pin

26) N $\frac{1}{4}$ COR 21-85-4E

(x) TOP ROW RAIL

Center North fork of twin Apple

76.98

56.5

59.87

(x) on Conc pipe

(x) on Conc pipe

(x) TOP ROW RAIL

44

(x) TOP ROW RAIL

Set "Conc" Monliman for 6' x 6' x 2' concrete over 5' x 18" steel pin

31

Corner searched
for, but not found,
and not set.

27 NE. COR. 21-85-4E

Center
r.t. iron
C.M.

60.18

61.90

62.81

61.42

Spk to
C.M. 20.

Spk to
C.M. 10.

Spk Trans
pole

Found 3'x10'x20" granite.
Added 3'x3'x13" granite.
over 1/8" x 8" iron pin,
over stone found.

02 OCT -8 AM 7:59

PHYLLIS M. GERLACH
JACKSON COUNTY, IOWA
RECORDER *g. 6.00*

Prepared by: SCHNEIDER Land Surveying and Planning P.O. Box 105 Peosta, Iowa 52068 563-556-9055

UNITED STATES PUBLIC LAND SURVEY CORNER CERTIFICATE OF

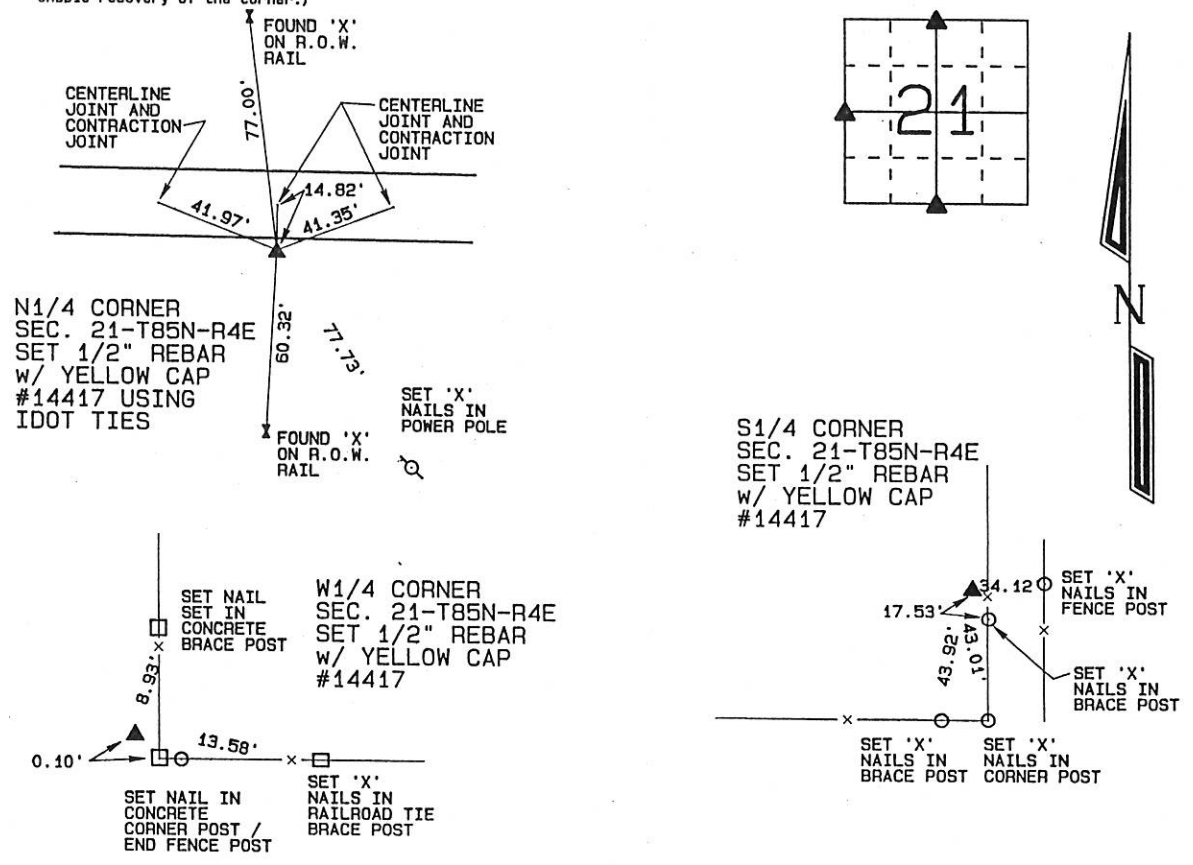
Land Survey Monuments situated in Section 21, Township 85 North, Range 4 East of the Fifth Principal Meridian, Jackson County, Iowa.
Previously recorded NONE OF RECORD

(Show reason for preparing this certificate, the evidence and detailed procedures used in establishing the corner positions and monumentation found or placed.)

Monument Description and Remarks: THE W1/4 CORNER OF SEC. 21-T85N-R4E WAS ESTABLISHED AT THE INTERSECTION OF OCCUPATION FENCES NORTH AND EAST OF THE CORNER. THE N1/4 CORNER OF SEC. 21-T85N-R4E WAS SET USING IDOT TIES OBTAINED AT THE COUNTY ENGINEER'S OFFICE. THE S1/4 CORNER OF SEC. 21-T85N-R4E WAS ESTABLISHED ON LINE FROM THE N1/4 CORNER OF SAID SECTION 21 THROUGH THE CENTER OF THE SECTION TO A NORTH-SOUTH OCCUPATION FENCE IN SECTION 28 LOCATED SOUTH OF SECTION 21 AND BY DOUBLING THE DISTANCE FROM THE CENTER OF SECTION 21 TO THE CENTER OF THE EAST-WEST COUNTY GRAVEL ROAD LOCATED A QUARTER MILE SOUTH OF THE CENTER.

PLAN - VIEW

(Show a minimum of three reference ties to durable physical objects, relevant monuments and physical conditions that will enable recovery of the corner.)



I hereby certify that this land surveying document was prepared and the related survey work was performed by me or under my direct personal supervision and that I am a duly licensed Land Surveyor under the laws of the State of Iowa.

David P. Schneider 10/4/2002
David P. Schneider P.L.S. #14417 Date:
My license renewal date is December 31, 2003.

Pages or sheets covered by this seal: THIS SHEET ONLY

SCHNEIDER
Land Surveying & Planning
P.O. Box 105 Peosta, Iowa 52068
Ph. #563-556-9055 Fax#563-556-9054



List Corners to be Indexed			
Corners	Section	Twp	Range
N1/4	21	85N	4E
W1/4	21	85N	4E
S1/4	21	85N	4E

02-4272
FILE NO. 1
BOOK 1 PAGE 583

02 OCT -8 AM 7:59

PHYLLIS M. GERLACH
JACKSON COUNTY, IOWA
RECORDER *gms 6.00*

Prepared by: SCHNEIDER Land Surveying and Planning P.O. Box 105 Peosta, Iowa 52068 563-556-9055

UNITED STATES PUBLIC LAND SURVEY CORNER CERTIFICATE OF

Land Survey Monuments situated in Section 21, Township 85 North, Range 4 East of the Fifth Principal Meridian, Jackson County, Iowa.
Previously recorded NONE OF RECORD

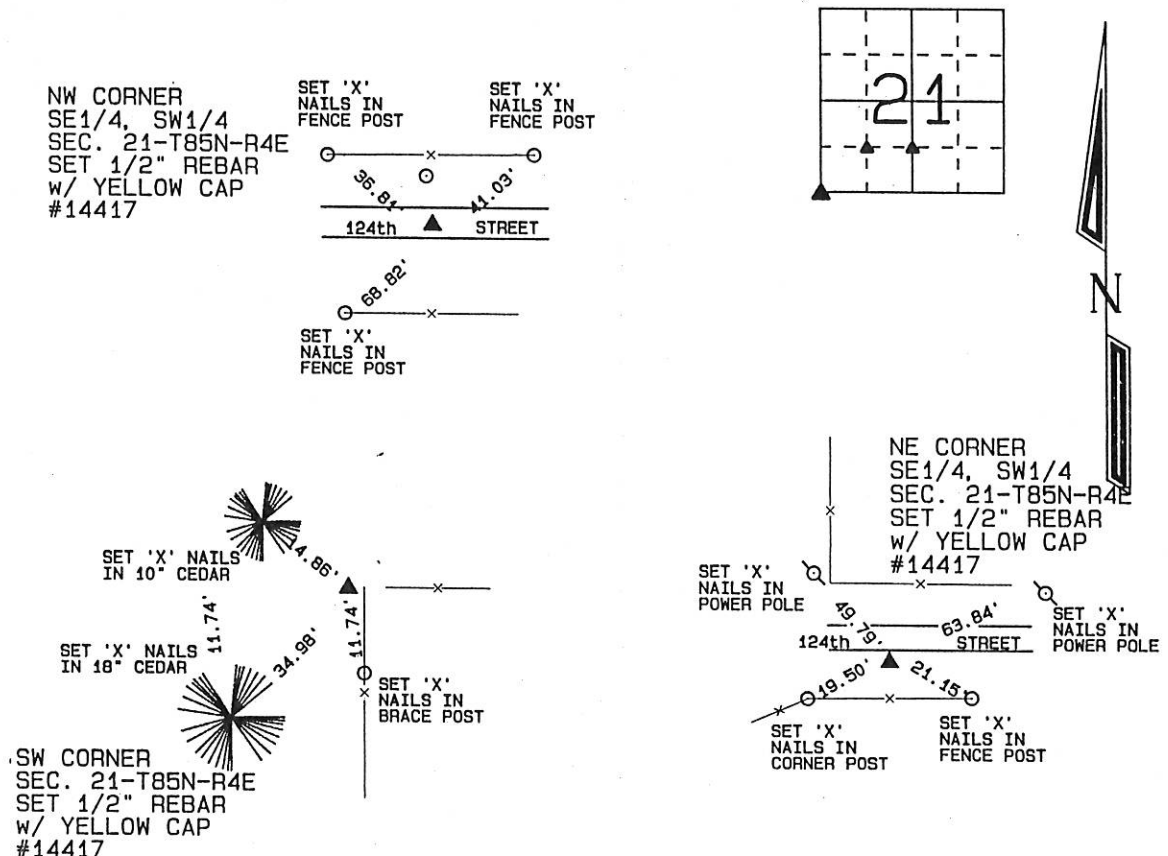
(BOOK, PAGE / INST. NO. / CABINET, SLIDE)

(Show reason for preparing this certificate, the evidence and detailed procedures used in establishing the corner positions and monumentation found or placed.)

Monument Description and Remarks: THE SW CORNER OF SEC. 21-T85N-R4E WAS ESTABLISHED AT THE INTERSECTION OF OCCUPATION FENCES SOUTH AND EAST OF THE CORNER. THE NE CORNER OF THE SE1/4 OF THE SW1/4 OF SEC. 21-T85N-R4E WAS PLACED IN THE MIDDLE OF THE COUNTY GRAVEL ROAD AND ON LINE FROM THE N1/4 CORNER OF SAID SECTION 21 THROUGH THE CENTER OF THE SECTION TO A NORTH-SOUTH OCCUPATION FENCE NEAR THE S1/4 CORNER OF SAID SECTION 21. THE NW CORNER OF THE SE1/4 OF THE SW1/4 OF SEC. 21-T85N-R4E WAS PLACED BY INTERSECTING THE OPPOSITE QUARTER-QUARTER CORNERS IN THE SW1/4 OF SAID SECTION 21.

PLAN - VIEW

(Show a minimum of three reference ties to durable physical objects, relevant monuments and physical conditions that will enable recovery of the corner.)



I hereby certify that this land surveying document was prepared and the related survey work was performed by me or under my direct personal supervision and that I am a duly licensed Land Surveyor under the laws of the State of Iowa.

David P. Schneider 10/4/2002
David P. Schneider P.L.S. #14417 Date:
My license renewal date is December 31, 2003.

Pages or sheets covered by this seal: THIS SHEET ONLY

SCHNEIDER
Land Surveying & Planning
P.O. Box 105 Peosta, Iowa 52068
Ph. #563-556-9055 Fax#563-556-9054



List Corners to be Indexed

Corners	Section	Twp	Range
NW CORNER SE1/4, SW1/4	21	85N	4E
NE SE1/4, SW1/4	21	85N	4E
SW	21	85N	4E

JOB NO. 301



Document 07-2397

Book 2 Page 563 Type 15 001 Pages 1

Date 5/21/2007 Time 9:48 AM

Rec Amt \$7.00

ARLENE SCHAUF, RECORDER
JACKSON COUNTY IOWA

Prepared by Wm. Burger LandSurveyors

510 3rd Street West Court, Worthington, Iowa

Phone 563 - 855 2028

UNITED STATES PUBLIC LAND SURVEY CORNER CERTIFICATE

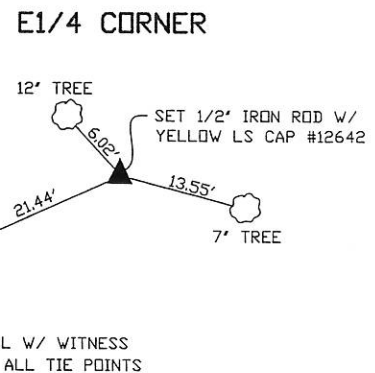
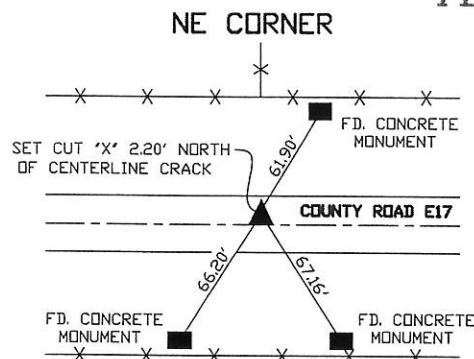
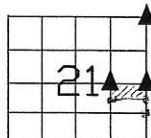
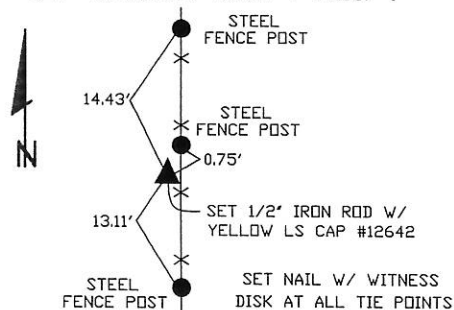
Land Survey Monuments situated in Section 21, Township 85N, Range 4E, of the Fifth Principal Meridian, Jackson County, Iowa. Previously recorded in N/A in the Office of the County Recorder

Monument Description and Remarks: (No Corner Certificates found at the County Recorders Office)

NE CORNER - SET CUT 'X' - USED IDOT TIES OBTAINED AT THE COUNTY ENGINEER'S OFFICE

E1/4 CORNER - SET 1/2" IRON ROD W/ YELLOW LS CAP #12642 - SET ON LINE AND DOUBLED THE DISTANCE BETWEEN THE SE CORNER OF THE N1/2 OF THE NE1/4 OF THE SE1/4 AND THE SE CORNER OF THE NE1/4 OF THE SE1/4

SW CORNER SE1/4 NE1/4 - SET 1/2" IRON ROD W/ YELLOW LS CAP #12642 - SET ON LINE AND DOUBLED THE DISTANCE BETWEEN THE SW CORNER OF THE N1/2 OF THE NE1/4 OF THE SE1/4 AND THE SW CORNER OF THE NE1/4 OF THE SE1/4

PLAN VIEW**SW CORNER SE1/4 NE1/4**

SEC. 21 TWP. 85N RANGE 4E

CORNERS TO BE INDEXED

NE CORNER	21	85N	4E
E1/4 CORNER	21	85N	4E
SW CORNER SE1/4 NE1/4	21	85N	4E



I hereby certify that this land surveying document was prepared and related survey work was performed by me or under my direct personal supervision and that I am a duly licensed Land Surveyor under the laws of the State of Iowa.

William H. Burger 5/9/07
William H. Burger Date

License number 12642

My license renewal date is December 31, 2008

Pages or Sheets covered by this seal: Sheet 1 of 1

Book 2 Page 563