

FILE NO. 04-1285
 BOOK 2 PAGE 249
 04 MAR 29 PM 12:56
 PHYLLIS M. GERLACH
 JACKSON COUNTY, IOWA
 RECORDER
 Fee \$11.00

Prepared by Wm. Burger Land Surveyors 510 3rd Street West Court, Worthington, Iowa Phone 563 - 855 2028

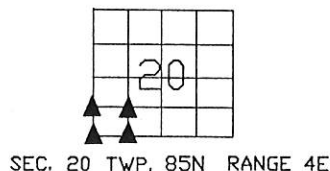
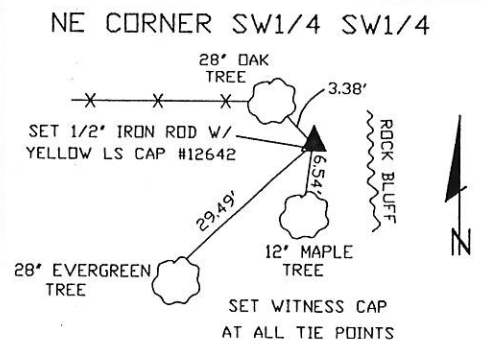
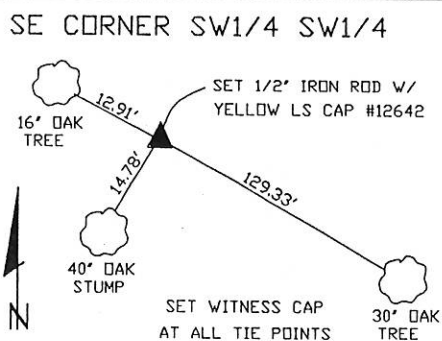
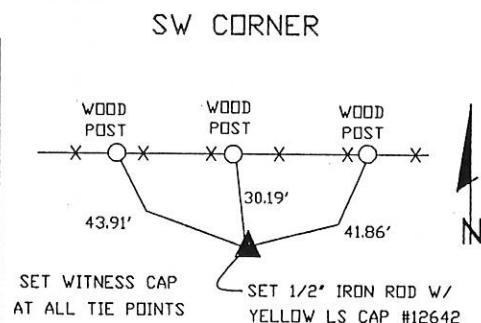
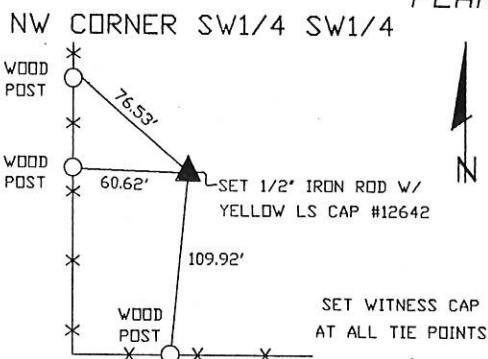
UNITED STATES PUBLIC LAND SURVEY CORNER CERTIFICATE

Land Survey Monuments situated in Section 20, Township 85N, Range 4E, of the Fifth Principal Meridian, Jackson County, Iowa. Previously recorded in N/A in the Office of the County Recorder

Monument Description and Remarks: (No Corner Certificates found at the County Recorders Office)

SW CORNER - SET 1/2" IRON ROD W/YELLOW LS CAP #12642 - USED INFORMATION FROM PLAT
 LOCATED IN THE OFFICE OF THE JACKSON COUNTY RECORDER IN BOOK 1-G, PAGE 132
 NW CORNER SW1/4 SW1/4 - SET 1/2" IRON ROD W/YELLOW LS CAP #12642 - SET ON LINE AND MIDWAY
 BETWEEN THE SW CORNER AND THE W1/4 CORNER
 SE CORNER SW1/4 SW1/4 - SET 1/2" IRON ROD W/YELLOW LS CAP #12642 - SET ON LINE AND MIDWAY
 BETWEEN THE SW CORNER AND THE S1/4 CORNER
 NE CORNER SW1/4 SW1/4 - SET 1/2" IRON ROD W/YELLOW LS CAP #12642 - RUN STRAIGHT LINES FROM
 OPPOSITE 1/4 1/4 CORNERS AND SET AT POINT OF INTERSECTION
 NOTE: METAL DETECTED ALL AREAS BUT NOTHING WAS FOUND; THERE IS NO PREVIOUS RECORD OF ANYTHING BEING SET AT ANY CORNER

PLAN VIEW



CORNERS TO BE INDEXED

SW CORNER	20	85N	4E
NW CORNER SW1/4 SW1/4	20	85N	4E
SE CORNER SW1/4 SW1/4	20	85N	4E
NE CORNER SW1/4 SW1/4	20	85N	4E



I hereby certify that this land surveying document was prepared and related survey work was performed by me or under my direct personal supervision and that I am a duly licensed Land Surveyor under the laws of the State of Iowa.

William H. Burger 1/24/04
 William H. Burger Date
 License number 12642
 My license renewal date is December 31, 2004
 Pages or Sheets covered by this seal: Sheet 1 of 1



Document 07-1383

Book 2 Page 552 Type 15 001 Pages 1

Date 3/26/2007 Time 11:29 AM

Rec Amt \$7.00

ARLENE SCHAUF, RECORDER
JACKSON COUNTY IOWA

Prepared by: SCHNEIDER Land Surveying and Planning, Inc. P.O. Box 128 Farley, Iowa 52046 563-744-3631

UNITED STATES PUBLIC LAND SURVEY CORNER CERTIFICATE OF

Land Survey Monuments situated in Section 20, Township 85 North, Range 4 East
of the Fifth Principal Meridian, Jackson County, Iowa.

Previously recorded SE CORNER - SCC BOOK 1, PAGE 583

(BOOK, PAGE / INST. NO. / CABINET, SLIDE)

(Show reason for preparing this certificate, the evidence and detailed procedures used in establishing the corner positions and monumentation found or placed.)

Monument Description and Remarks: THE CENTER OF SECTION 20, T85N, R4E WAS ESTABLISHED AT THE
THEORETICAL CENTER OF SAID SECTION 20. THE S1/4 CORNER OF SECTION 20, T85N, R4E WAS ESTABLISHED BY

DOUBLING THE DISTANCE FROM THE SW CORNER OF SAID SECTION 20 THROUGH THE SE CORNER OF THE SW1/4 OF

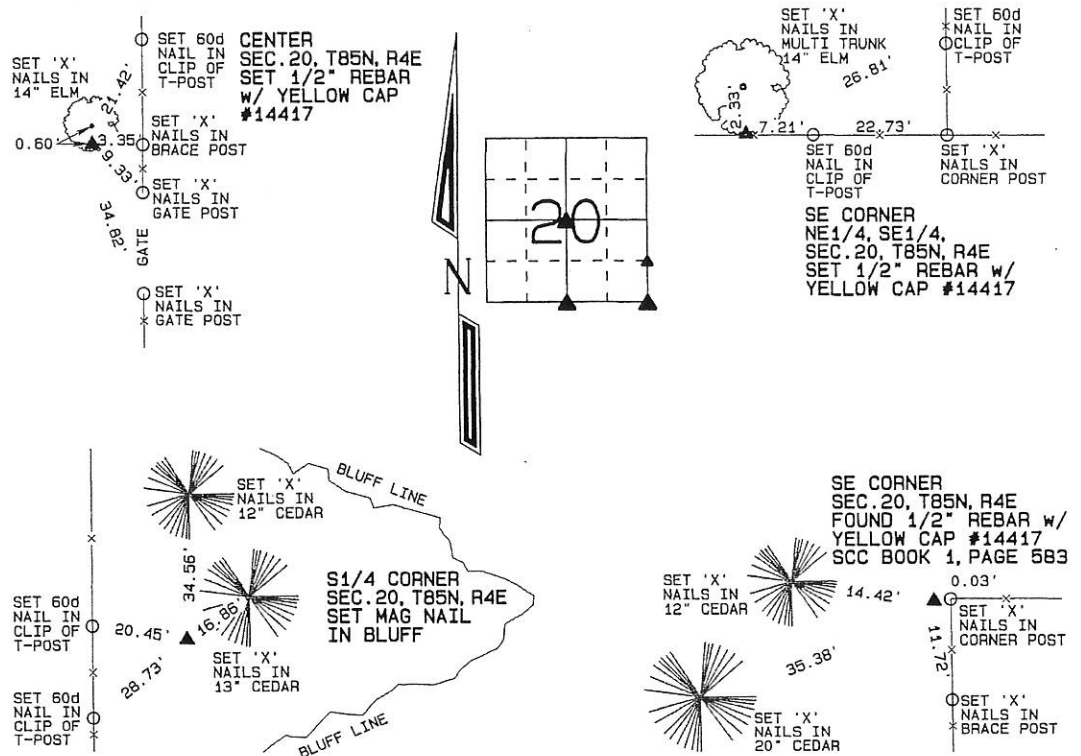
THE SW1/4 OF SAID SECTION 20. THE SE CORNER OF THE NE1/4 OF THE SE1/4 OF SECTION 20, T85N, R4E

WAS ESTABLISHED AT THE MIDPOINT OF A LINE FROM THE E1/4 CORNER TO THE SE CORNER OF SAID SECTION 20.

THE SE CORNER OF SECTION 20, T85N, R4E WAS RETIED BECAUSE THE PREVIOUS 'X' NAILS HAD BEEN PULLED.

PLAN - VIEW

(Show a minimum of three reference ties to durable physical objects, relevant monuments and physical conditions that will enable recovery of the corner.)



I hereby certify that this land surveying document was prepared and the related survey work was performed by me or under my direct personal supervision and that I am a duly licensed Land Surveyor under the laws of the State of Iowa.

David P. Schneider 3/23/2007
David P. Schneider P.L.S. #14417 Date:
My license renewal date is December 31, 2007.

Pages or sheets covered by this seal: THIS SHEET ONLY

SCHNEIDER
Land Surveying & Planning, Inc.

P.O. Box 128 Farley, Iowa 52046
Ph. #563-744-3631 Fax#563-744-3629



List Corners to be Indexed

Corners	Section	Twp	Range
CENTER	20	85N	4E
S1/4 CORNER	20	85N	4E
SE CORNER NE1/4, SE1/4	20	85N	4E
SE CORNER	20	85N	4E

Back 2 Page 552

JOB NO. 1005



Document 09-447

Book 2 Page 657 Type 15 001 Pages 1
Date 2/09/2009 Time 11:05 AM
Rec Amt \$7.00

ARLENE SCHAUF, RECORDER/REGISTRAR
JACKSON COUNTY IOWA

Prepared by Wm. Burger LandSurveyor 510 3rd Street West Court, Worthington, Iowa Phone 563 - 855 2028

UNITED STATES PUBLIC LAND SURVEY CORNER CERTIFICATE

Land Survey Monuments situated in Section 20, Township 85N, Range 4E, of the Fifth Principal Meridian, Jackson County, Iowa. Previously recorded in SEE NOTE in the Office of the County Recorder

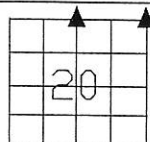
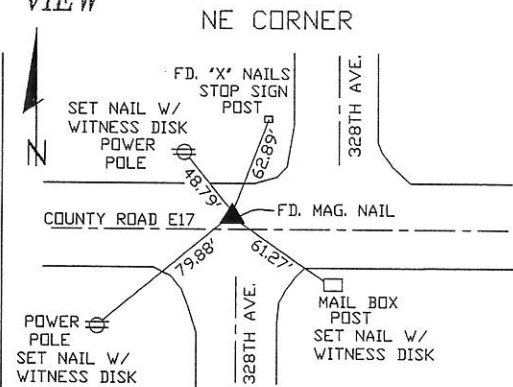
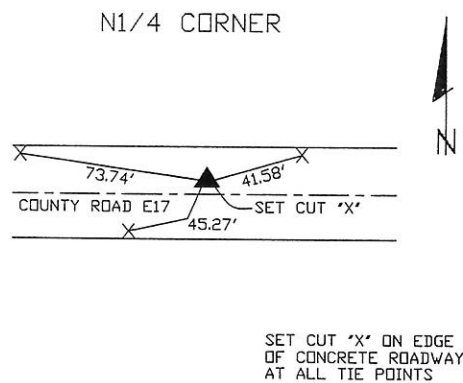
Monument Description and Remarks: (No Corner Certificates found at the County Recorders Office)

N1/4 CORNER - SET CUT 'X' IN CONCRETE ROAD - SET ONLINE AND MIDWAY BETWEEN THE NW CORNER AND THE NE CORNER

NE CORNER - FD. MAG. NAIL IN CONCRETE ROAD

NOTE: THE NE CORNER WAS PREVIOUSLY RECORDED IN BOOK 1, PAGE 98

PLAN VIEW



SEC. 20 TWP. 85N RANGE 4E

CORNERS TO BE INDEXED

N1/4 CORNER	20	85N	4E
NE CORNER	20	85N	4E



I hereby certify that this land surveying document was prepared and related survey work was performed by me or under my direct personal supervision and that I am a duly licensed Land Surveyor under the laws of the State of Iowa.

William H. Burger 1/24/09
William H. Burger Date

License number 12642

My license renewal date is December 31, 2010

Pages or Sheets covered by this seal: Sheet 1 of 1

Book 2 Page 657