

## UNITED STATES PUBLIC LAND SURVEY CORNER CERTIFICATE

OF

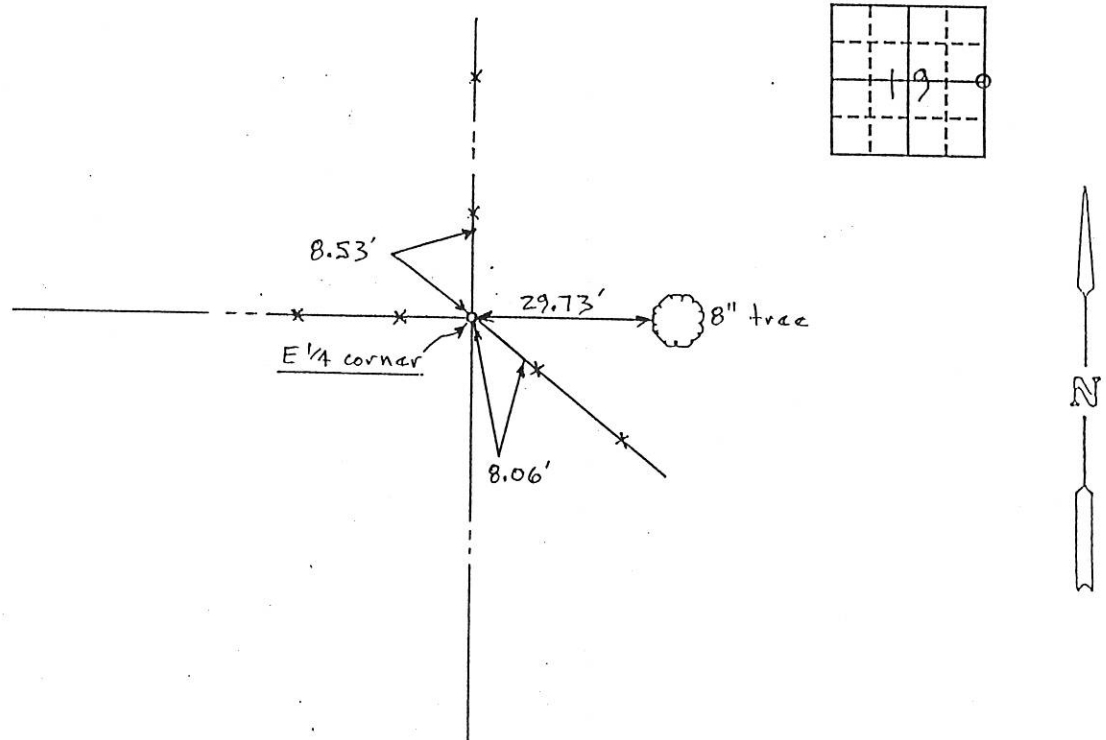
Land Survey Monuments situated in Section 19, Township 85N, Range 4E, of the Fifth Principal Meridian, Jackson County, Iowa.  
 Previously recorded in \_\_\_\_\_ in County Recorder's Office.  
 (book, page, document number, etc.)

(Show reason for preparing this certificate, the evidence and detailed procedures used in establishing the corner positions and monumentation found or placed.)

Monument Description and Remarks: set 5/8" iron rod at E 1/4 corner  
- all ties are nails & washers (flashers)

## PLAN - VIEW

(Show a minimum of three reference ties to durable physical objects, relevant monuments and physical conditions that will enable recovery of the corner.)



I hereby certify that the survey work was completed and this certificate was prepared by me or under my direct personal supervision and that I am a duly registered land surveyor under the laws of the state of Iowa.

Signature: LaVerne F. Vander Schaaf

Name typed or printed:

Date: 10-21-91 Reg. No. 11084

SEAL



Corners	Section	Twp	Range
<u>E 1/4 Cor.</u>	<u>19</u>	<u>85</u>	<u>4</u>

FILE NO. 1023  
 BOOK 1 PAGE 61

1991 OCT 24 AM 9:42

SHIRLY RITENOUR  
 JACKSON COUNTY, IOWA  
 RECORDER

See 5.00