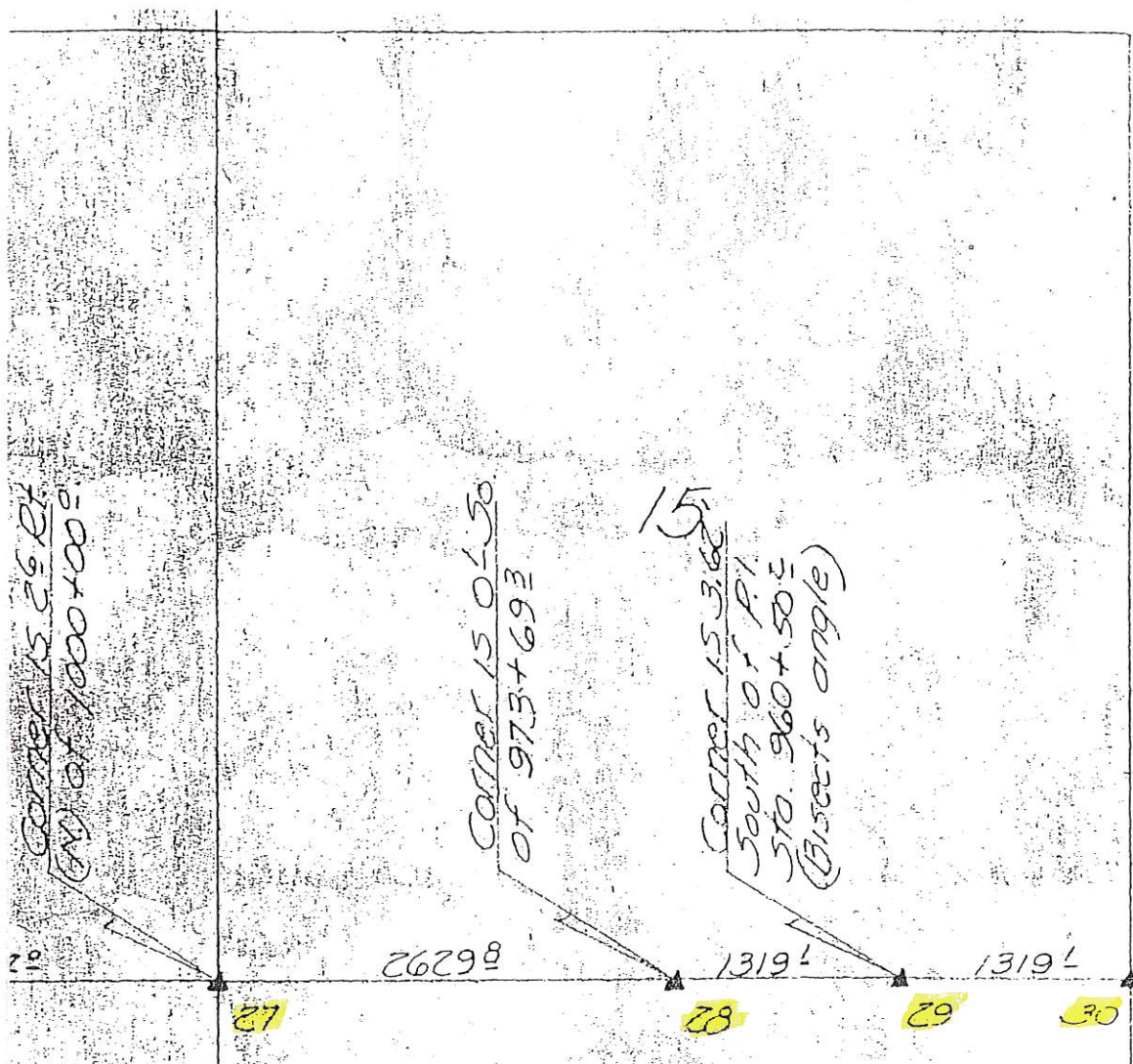


Sec. 15



LAND CORNER SURVEY
JACKSON COUNTY T85 & 86 N R4E

MADE FOR

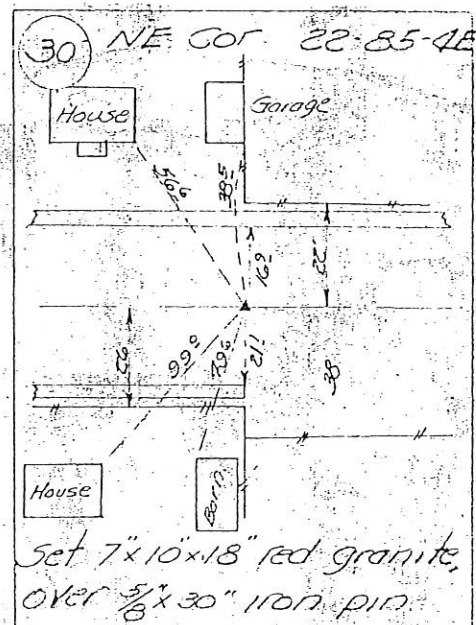
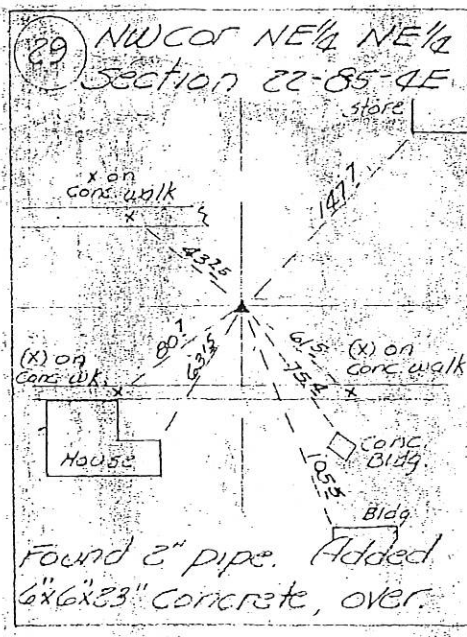
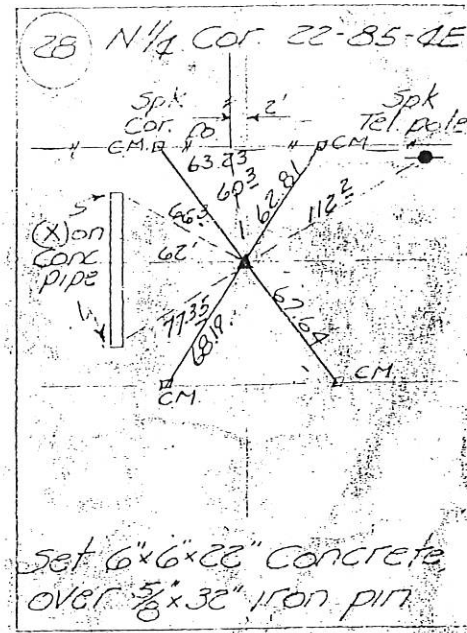
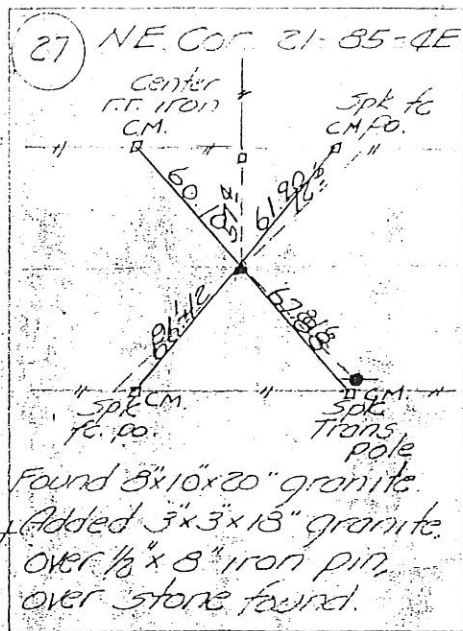
IOWA STATE HIGHWAY COMMISSION

FOR ROW DESCRIPTIONS ON PRIMARY 113 PROJECT FN 830 A-1

JUNE, JULY 1941

GR ELLIOTT RLS 1841

see field notes filed in Ames office for complete information.



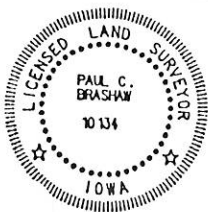
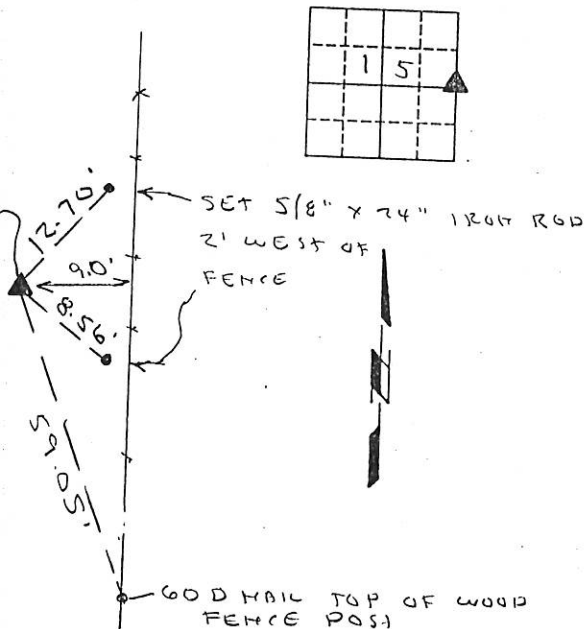
ORDER *vd*
fee 6.

SLSI 9-94

OF

(Show reason for preparing this certificate, the evidence and detailed procedures used in establishing the corner positions and monumentation found or placed.)

(Show a minimum of three reference ties to durable physical objects, relevant monuments and physical conditions that will enable recovery of the corner.)



I HEREBY CERTIFY THAT THIS LAND SURVEYING DOCUMENT WAS PREPARED AND THE RELATED SURVEY WORK WAS PERFORMED BY ME OR UNDER MY DIRECT PERSONAL SUPERVISION AND THAT I AM A DULY LICENSED LAND SURVEYOR UNDER THE LAWS OF THE STATE OF IOWA.

Paul C. Erashaw 3/31/2003
(DATE)

LICENSE NUMBER 10 134

MY LICENSE RENEWAL DATE IS DECEMBER 31, 2004

Corner	List	Corner to be	Indexed	Range
		Section	Top	
East 1/4 corner		15	85N	4 E

		MONUMENT RECORD	
		COUNTY: <u>JACKSON</u>	
		TOWNSHIP: <u>JACKSON</u>	
DATE PLOTTED:		FIELD BOOK #	
DATE REVISED:		PAGE #	DRAWING #



Document 05-2764

Book 2 Page 365 Type 06 023 Pages 1
Date 7/12/2005 Time 10:31 AM
Rec Amt \$7.00PHYLLIS M. GERLACH, RECORDER
JACKSON COUNTY IOWA

PREPARED BY: MICHAEL J. WEBER, WEBER SURVEYING, LLC, 26789 46TH AVE, BERNARD, IA 52032 (563) 879-4173

UNITED STATES PUBLIC LAND SURVEY CORNER CERTIFICATE,
OFLAND SURVEY MONUMENTS SITUATED IN SECTION 18, TOWNSHIP 86 NORTH, RANGE 3 EAST
OF THE FIFTH PRINCIPAL MERIDIAN, JACKSON COUNTY, IOWA.
PREVIOUSLY RECORDED NONE UNLESS OTHERWISE NOTED

(book, page, document number, etc.)

(Show reason for preparing this certificate, the evidence and detailed procedures used in establishing the corner positions and nonumentation found or placed.)

Monument Description and Remarks:

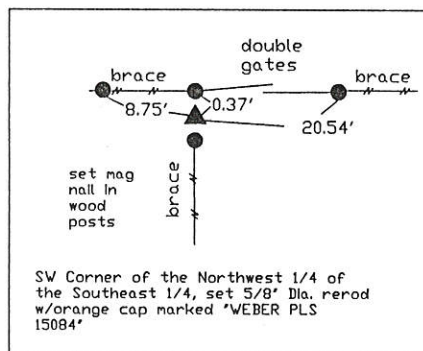
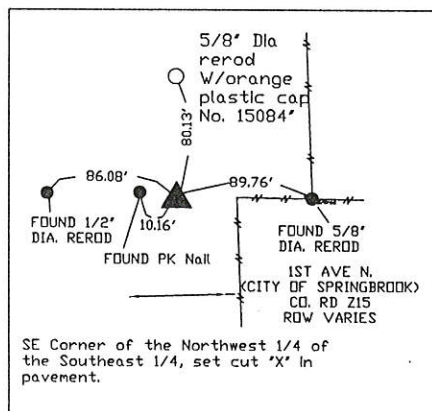
SW Corner of the Northwest 1/4 of the Southeast 1/4, established corner at the tee occupation fenceline running East, West and South, set 5/8" Dia. rerod w/orange cap marked 'WEBER PLS 15084'

SE Corner of the Northwest 1/4 of the Southeast 1/4, established corner online between the SW Corner of the NW-SE and the SW corner of Parcel per Plat Book 1-C Page 29 and intersecting that line with the line from the SE corner of the SW-SE by establishing the bearing using Plat per Book 1-C Page 122 set cut 'X' in pavement.

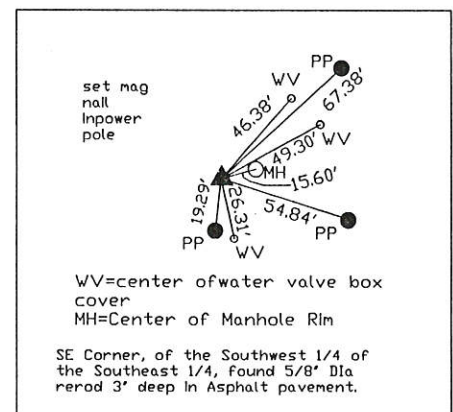
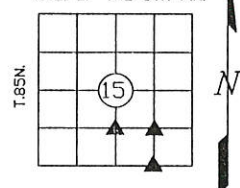
SE Corner, of the Southwest 1/4 of the Southeast 1/4, found 5/8" Dia rerod 3' deep in Asphalt pavement, previously recorded from Highway work, no Book and Page copy in the County Engineers Section corner certificate book.

PLAN - VIEW

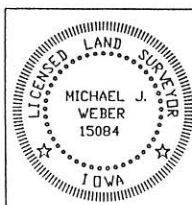
(Show a minimum of three reference ties to durable physical objects, relevant monuments and physical conditions that will enable recovery of the corner.)



R.4E. OF THE 5TH P.M.



DWG. NAME: ERNST

I HEREBY CERTIFY THAT THIS LAND SURVEYING DOCUMENT WAS
PREPARED AND THE RELATED SURVEY WORK WAS PERFORMED BY ME OR
UNDER MY DIRECT PERSONAL SUPERVISION AND THAT I AM A DULY
LICENSED LAND SURVEYOR UNDER THE LAWS OF THE STATE OF IOWA.

MICHAEL J. WEBER (DATE) June 28, 2005

LICENSE NUMBER 15084

MY LICENSE RENEWAL DATE IS DECEMBER 31, 2005

SHEETS COVERED BY THIS SEAL: 7

List Corners to be Indexed

Corner	Sec	Twp	Range
SW Corner NW-SE	15	85N	4E
SE Corner NW-SE	15	85N	4E
SE Corner SW-SE	15	85N	4E



Document 06-2285

Book 2 Page 453 Type 06 023 Pages 1

Date 6/14/2006 Time 10:44 AM

Rec Amt \$7.00

PREPARED BY:
WILLIAM HOLT, PLS
NORWEST SURVEYING SERVICES, INC.
301 E LINCOLNWAY
MORRISON, IL 61270

PHYLLIS M GERLACH, RECORDER
JACKSON COUNTY IOWA

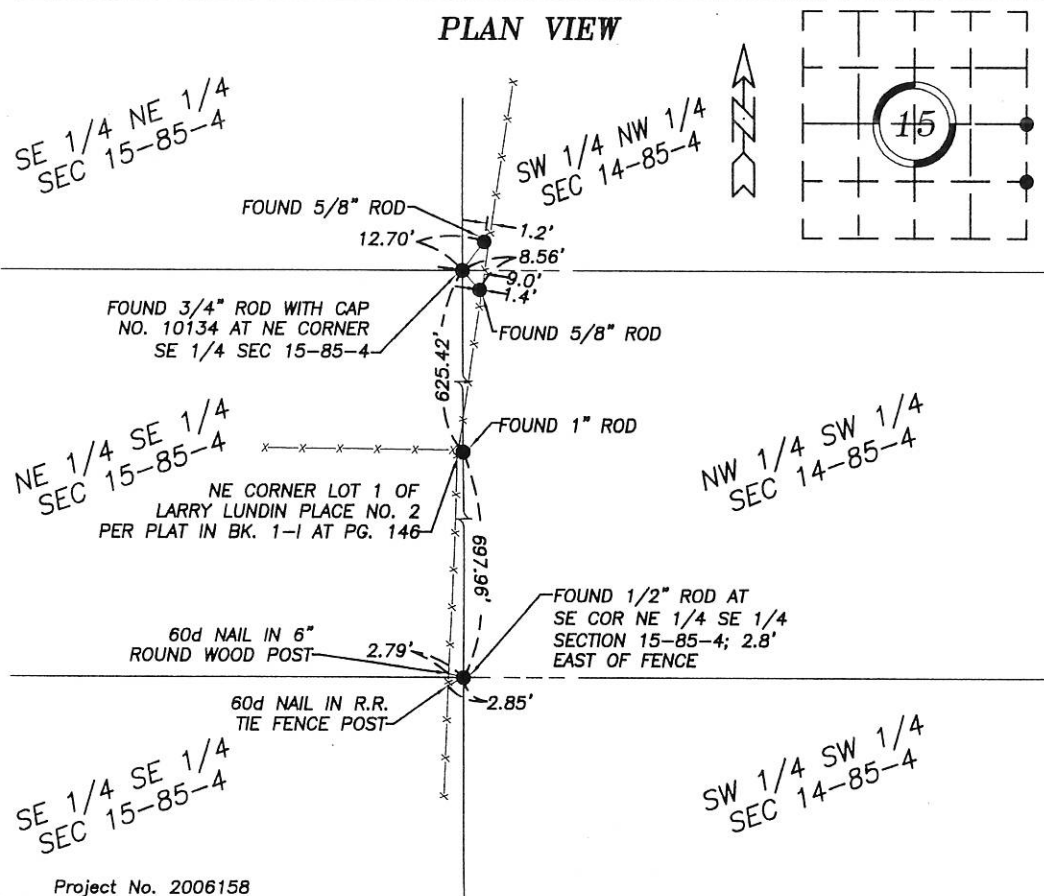
UNITED STATES PUBLIC LAND SURVEY CORNER CERTIFICATE OF

Land Survey Monuments in Section 15 in Township 85 North (T85N), Range 4 East (R4E)
of the Fifth Principal Meridian (5th PM), Jackson County, Iowa. (Not Previously Recorded)

Monuments were found at the Northeast corner of the Northeast Quarter (NE 1/4) of the Southeast Quarter (SE 1/4), and the Southeast corner of the Northeast Quarter (NE 1/4) of the Southeast Quarter (SE 1/4) of Section 15 per the description below.

The corner location was established at a prorata location using existing monuments, fences and occupation lines within this and adjoining Sections.

PLAN VIEW



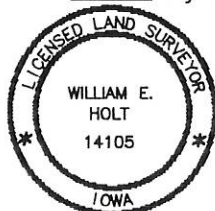
Project No. 2006158

I hereby certify that the survey work was completed
and this land surveying document was prepared by
me or under my direct personal supervision and
that I am a duly Licensed Land Surveyor under the
laws of the State of Iowa.

Signature: William E. Holt

William E. Holt
Iowa License No. 14105

My License Renews on December 31, 2006

Dated this 22nd day of May, 2006 C.E.

Corners to be Indexed

Corner	Section	Township	Range
NE CORNER NE 1/4 SE 1/4	15	85N	4E
SE CORNER NE 1/4 SE 1/4	15	85N	4E

Book 2 Page 453



Document 13-685

Book 3 Page 81 Type 15 001 Pages 1
Date 2/18/2013 Time 8:36 AM
Rec Amt \$7.00ARLENE SCHAUF, RECORDER/REGISTRAR
JACKSON COUNTY IOWA

Prepared by Wm. Burger Land Surveyor

510 3rd Street West Court, Worthington, Iowa 52078

Phone 563 - 855 2028

UNITED STATES PUBLIC LAND SURVEY CORNER CERTIFICATE

Land Survey Monuments situated in Section 15, Township 85N, Range 4E, of the Fifth Principal Meridian, Jackson County, Iowa. Previously recorded in N/A in the Office of the County Recorder

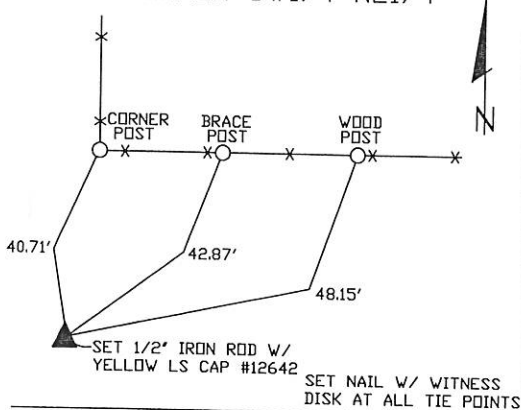
Monument Description and Remarks: (No Corner Certificates found at the County Recorders Office)

NW CORNER SW1/4 NE1/4 - SET 1/2" IRON ROD W/ YELLOW LS CAP #12642 - RUN STRAIGHT LINES FROM OPPOSITE 1/4 1/4 CORNERS AND SET AT POINT OF INTERSECTION

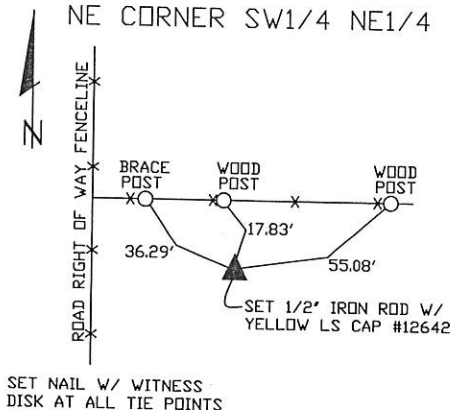
NE CORNER SW1/4 NE1/4 - SET 1/2" IRON ROD W/ YELLOW LS CAP #12642 - SET ONLINE AND MIDWAY BETWEEN THE NE CORNER AND THE E1/4 CORNER

SE CORNER SW1/4 NE1/4 - SET 1/2" IRON ROD W/ YELLOW LS CAP #12642 - SET ONLINE AND MIDWAY BETWEEN THE CENTER OF SECTION AND THE E1/4 CORNER

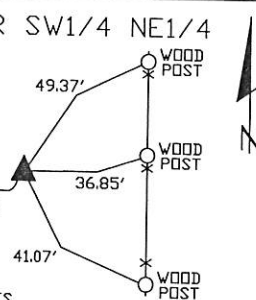
NW CORNER SW1/4 NE1/4 PLAN VIEW

SET NAIL W/ WITNESS
DISK AT ALL TIE POINTS

NE CORNER SW1/4 NE1/4

SET NAIL W/ WITNESS
DISK AT ALL TIE POINTS

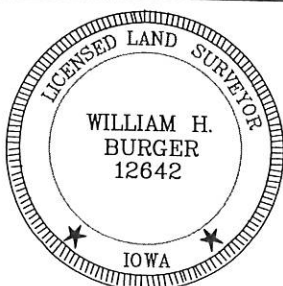
SE CORNER SW1/4 NE1/4

ALL DISTANCES ARE
SLOPE TAPEDSET 1/2" IRON ROD W/
YELLOW LS CAP #12642SET NAIL W/ WITNESS
DISK AT ALL TIE POINTS

SEC. 15 TWP. 85N RANGE 4E

CORNERS TO BE INDEXED

NW CORNER SW1/4 NE1/4	15	85N	4E
NE CORNER SW1/4 NE1/4	15	85N	4E
SE CORNER SW1/4 NE1/4	15	85N	4E



I hereby certify that this land surveying document was prepared and related survey work was performed by me or under my direct personal supervision and that I am a duly licensed Land Surveyor under the laws of the State of Iowa.

William H. Burger 4/11/13
Date

William H. Burger

License number 12642

My license renewal date is December 31, 2014

Pages or Sheets covered by this seal: Sheet 1 of 1