

PREPARED BY:
WILLIAM HOLT, PLS
NORWEST SURVEYING SERVICES, INC.
301 E LINCOLNWAY
MORRISON, IL 61270

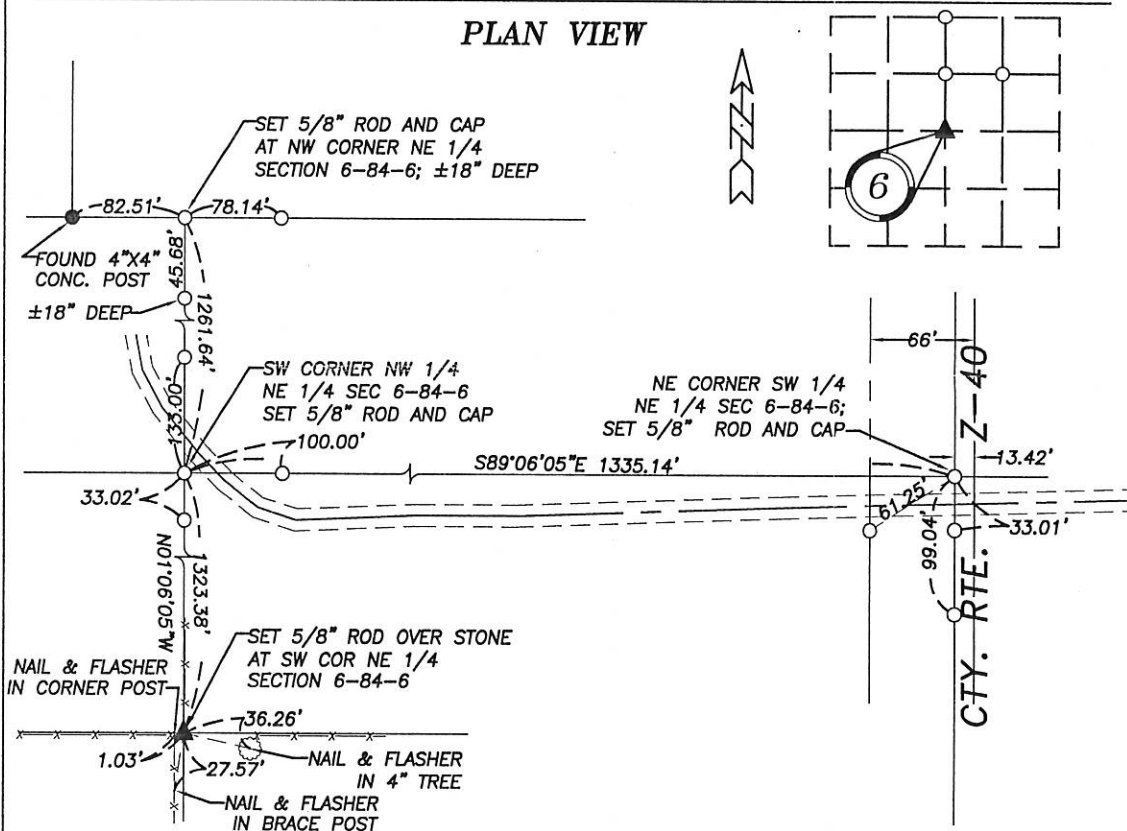
UNITED STATES PUBLIC LAND SURVEY CORNER CERTIFICATE OF

Land Survey Monuments in Section 6 in Township 84 North (T84N), Range 6 East (R6E)
of the Fifth Principal Meridian (5th PM), Jackson County, Iowa. (Not Previously Recorded)

Monuments were found or set at the locations described below.

The corner location was established at a prorata location using existing monuments, fences and
occupation lines within this and adjoining Sections.

PLAN VIEW



Project No. 2004339

I hereby certify that the survey work was completed
and this land surveying document was prepared by
me or under my direct personal supervision and
that I am a duly registered land surveyor under the
laws of the State of Iowa.

Signature: *William E. Holt*

William E. Holt

Iowa Registration No. 14105

My Registration Renews on December 31, 2004

Dated this 8th day of December 2004 C.E.



Corners to be Indexed

Corner	Section	Township	Range
NW Corner NE 1/4	6	84N	6E
SW Corner NE 1/4	6	84N	6E
SW Corner NW 1/4 NE 1/4	6	84N	6E
NE Corner SW 1/4 NE 1/4	6	84N	6E



Document 05-541

Book 2 Page 325 Type 06 23 Pages 1
Date 2/10/2005 Time 8:56 AM
Rec Amt \$7.00

PHYLLIS M. GERLACH, RECORDER
JACKSON COUNTY IOWA

PREPARED BY:
Landmark 511 South 4th Street
Clinton, IA 52732
ENGINEERING GROUP, INC. (563) 243-1398

SLSI 9-00

UNITED STATES PUBLIC LAND SURVEY CORNER CERTIFICATE OF

Land Survey Monuments situated in Section 6, Township 84N, Range 6E, of the Fifth Principal Meridian, JACKSON County, Iowa.

Previously recorded in N/A, in Clinton County Recorder's Office.

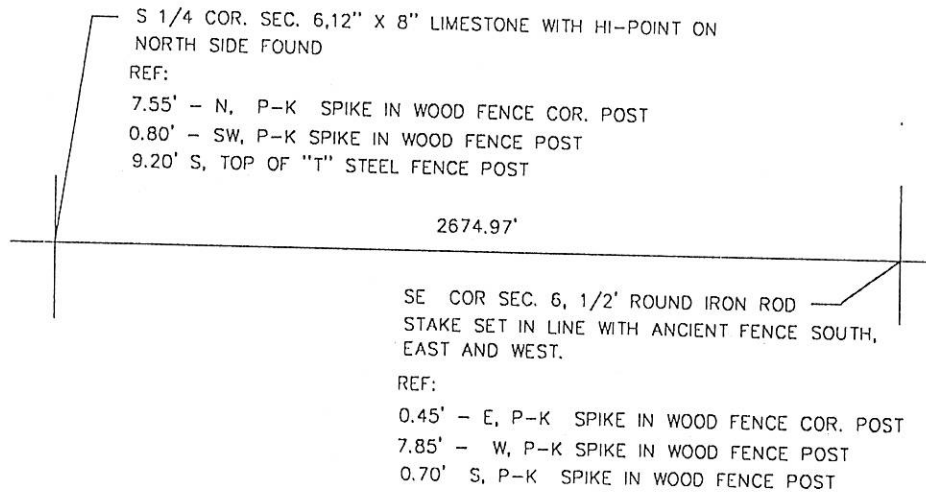
(Show reason for preparing this certificate, the evidence and detailed procedures used in establishing the corner positions and monumentation found or placed.)

Monument Description and Remarks: SE COR. SEC. 6, 1/2" ROUND IRON ROD STAKE SET IN LINE WITH FENCE SOUTH AND EAST-WEST. S 1/4 COR SEC. 6, 12" X 8" LIMESTONE WITH HI-POINT OF NORTH SIDE FOUND.

PROJECT NO. 04-04-297

PLAN - VIEW

(Show a minimum of three reference ties to durable physical objects, relevant monuments and physical conditions that will enable recovery of the corner.)



I hereby certify that this land surveying document was prepared and the related survey work was performed by me or under my direct personal supervision and that I am a duly licensed land surveyor under the laws of the State of Iowa.

Harry J. Goddard
Harry J. Goddard

Dec. 21, 2004
Date

My license is subject to renewal on Dec. 31, 2004
License No. 15524



Only those copies of this page signed in red color and displaying surveyors original

Seal are to be considered certified official copies.
(Iowa Admin. Code 193C-1.30)

List Corners to be Indexed

Corners	Section	Twp	Range
S 1/4	6	84N	6E
SE COR	6	84N	6E