

## UNITED STATES PUBLIC LAND SURVEY CORNER CERTIFICATE

OF

Land Survey Monuments situated in Section 32, Township 85 N., Range 6 E., of the Fifth Principal Meridian, JACKSON County, Iowa.  
Previously recorded in \_\_\_\_\_ in County Recorder's Office.

(book, page, document number, etc.)

(Show reason for preparing this certificate, the evidence and detailed procedures used in establishing the corner positions and monumentation found or placed.)

Monument Description and Remarks: W 1/4 COR. = BRASS TABLET IN CONCRETE 1' ABOVE

GROUND & IN LINE WITH NORTH/SOUTH FENCE LINE.

SE COR., SW 1/4, NW 1/4 = SET 5/8" CAPPED ROD 3' EAST & 11' NORTH OF CORNER

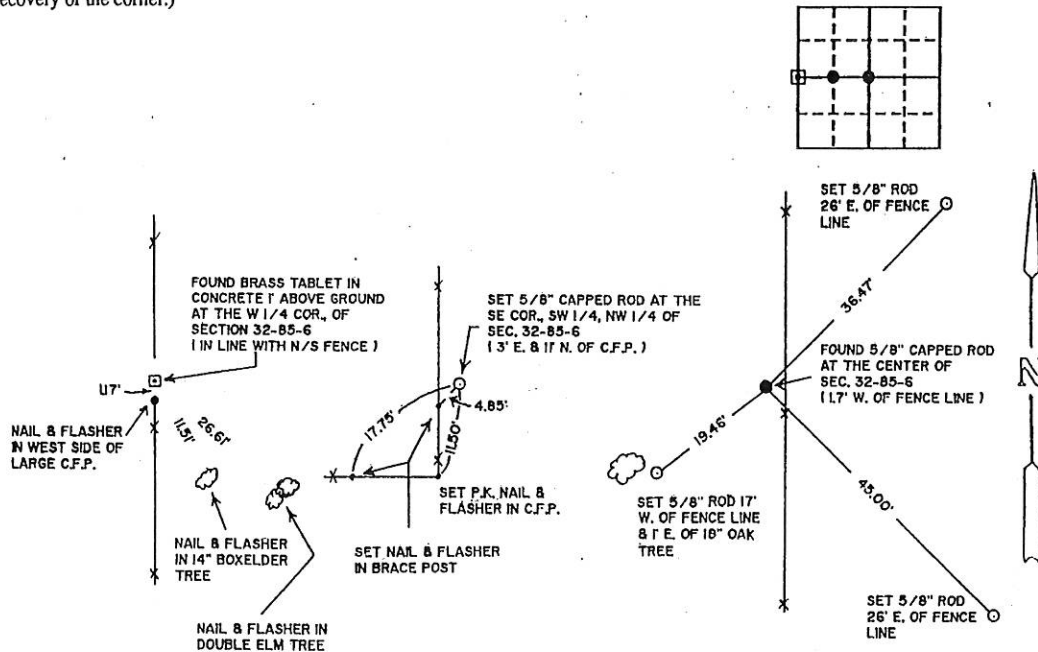
FENCE POST. (SET MID-WAY BETWEEN W 1/4 COR. AND CENTER OF SECTION)

CENTER = FOUND 5/8" CAPPED ROD 1.7' WEST OF FENCE LINE. (SEE PLAT BK 1-G, PG. 36)

THIS DOCUMENT WAS PREPARED TO PERPETUATE CORNERS.

## PLAN - VIEW

(Show a minimum of three reference ties to durable physical objects, relevant monuments and physical conditions that will enable recovery of the corner.)



JOB #3918

I hereby certify that the survey work was completed and this land surveying document was prepared by me or under my direct personal supervision and that I am a duly registered land surveyor under the laws of the state of Iowa

Signature: LaVerne F. Vander Schaaf  
Name typed or printed: LAVERNE F. VANDER SCHAAF

Date: 5/14/96 Reg. No. 11084

My registration renewal date is December 31, 1996

SEAL



Corners	Section	Twp	Range
W 1/4	32	85	6
SE COR., SW 1/4, NW 1/4	32	85	6
CENTER	32	85	6

FILE NO. 003573  
BOOK 277 PAGE 277

1996 JUN 12 PM 2:32

SHIRLY RITENOUR  
JACKSON COUNTY, IOWA  
RECORDER