



Document 09-4739

Book 2 Page 691 Type 15 001 Pages 1
Date 12/08/2009 Time 12:28 PM
Rec Amt \$9.00

ARLENE SCHAUF, RECORDER/REGISTRAR
JACKSON COUNTY IOWA

PREPARED BY: MICHAEL J. WEBER, WEBER SURVEYING, LLC, 26789 46TH AVE, BERNARD, IA 52032 (563) 879-4173

UNITED STATES PUBLIC LAND SURVEY CORNER CERTIFICATE OF

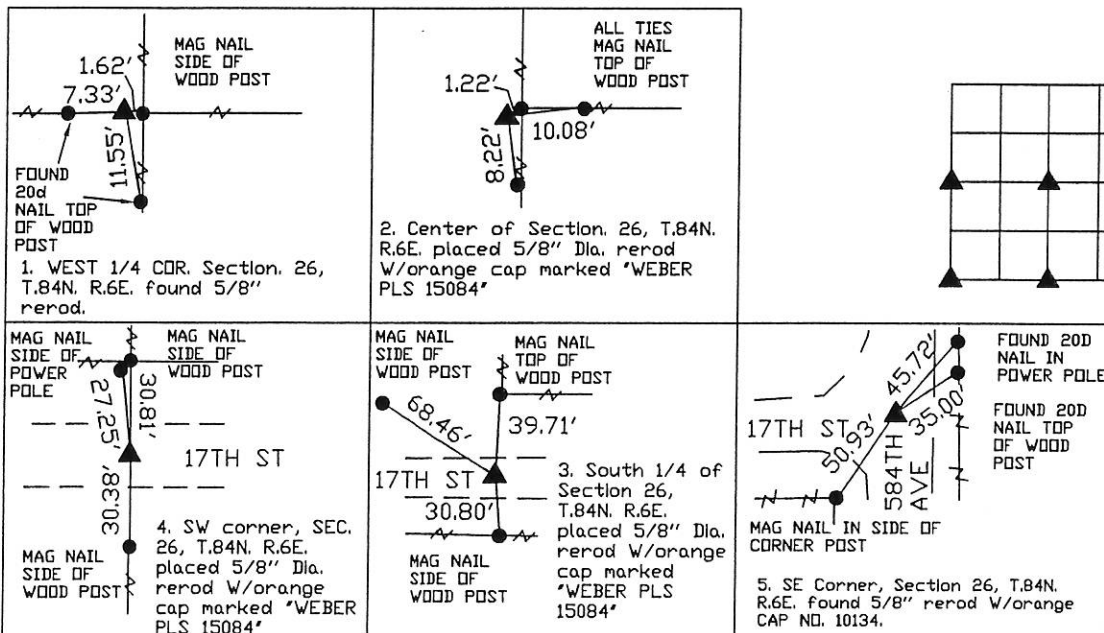
LAND SURVEY MONUMENTS SITUATED IN SECTION 26, TOWNSHIP 84 NORTH, RANGE 6 EAST
OF THE FIFTH PRINCIPAL MERIDIAN, JACKSON COUNTY, IOWA.
PREVIOUSLY RECORDED NONE UNLESS OTHERWISE NOTED

(book, page, document number, etc.)

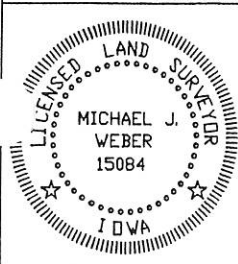
(Show reason for preparing this certificate, the evidence and detailed procedures used in establishing the corner positions and monumentation found or placed.)

Monument Description and Remarks:

1. West 1/4 corner found 5/8" rerod as shown on Plat of Survey in book 1-J page 66 as the East 1/4 of Sec. 27, T.84N. R.6E.
2. Center of Section placed 5/8" Dia. rerod W/orange cap marked "WEBER PLS 15084", established corner at the intersection of fenceline running North, South & East.
3. South 1/4 corner placed 5/8" Dia. rerod W/orange cap marked "WEBER PLS 15084", established corner midway and on line between the SW and SE corner of said Sec. 26
4. SW corner placed 5/8" Dia. rerod W/orange cap marked "WEBER PLS 15084", established corner at the center of 17th Street inline with fences running North & South.
5. SE corner found 5/8" rerod W/orange CAP NO. 10134.



DWG: BALES



I HEREBY CERTIFY THAT THIS LAND SURVEYING DOCUMENT WAS
PREPARED AND THE RELATED SURVEY WORK WAS PERFORMED BY ME OR
UNDER MY DIRECT PERSONAL SUPERVISION AND THAT I AM A DULY
LICENSED LAND SURVEYOR UNDER THE LAWS OF THE STATE OF IOWA.

Michael J. Weber November 23, 2009
MICHAEL J. WEBER (DATE)

LICENSE NUMBER 15084

MY LICENSE RENEWAL DATE IS DECEMBER 31, 2009

SHEETS COVERED BY THIS SEAL: This sheet

List Corners to be Indexed

Corner	Sec Twp Range
W 1/4 COR.	26-84N-6E
CENTER	26-84N-6E
SW Cor.	26-84N-6E
S 1/4 Cor.	26-84N-6E
SE Cor.	26-84N-6E

Book 2 Page 691