



Document 12-4009

Book 3 Page 65 Type 15 001 Pages 1
Date 9/24/2012 Time 9:07 AM
Rec Amt \$7.00

ARLENE SCHAUF, RECORDER/REGISTRAR
JACKSON COUNTY IOWA

PREPARED BY: MICHAEL J. WEBER, WEBER SURVEYING, LLC, 26789 46TH AVE, BERNARD, IA 52032 (563) 879-4173

UNITED STATES PUBLIC LAND SURVEY CORNER CERTIFICATE OF

LAND SURVEY MONUMENTS SITUATED IN SECTION 18, TOWNSHIP 84 NORTH, RANGE 6 EAST
OF THE FIFTH PRINCIPAL MERIDIAN, JACKSON COUNTY, IOWA.
PREVIOUSLY RECORDED NONE UNLESS OTHERWISE NOTED

(book, page, document number, etc.)

(Show reason for preparing this certificate, the evidence and detailed procedures used in establishing the corner positions and monumentation found or placed.)

Monument Description and Remarks:

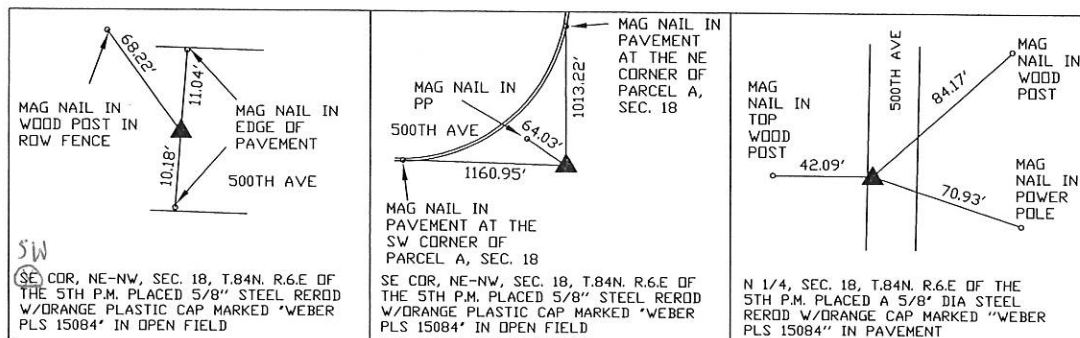
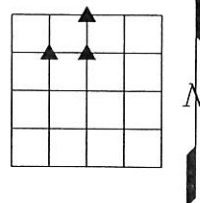
-N 1/4, SEC. 18, T.84N. R.6.E OF THE 5TH P.M. PLACED A 5/8" DIA STEEL REROD W/ORANGE CAP MARKED "WEBER PLS 15084" IN PAVEMENT. CORNER PREVIOUSLY RECORDED AS THE S 1/4 OF SEC. 7, T.84N. R.6.E OF THE 5TH P.M. IN BOOK 2 PAGE 642, DOC. NO. 08-4254. ESTABLISHED CORNER USING RIGHT OF WAY EASEMENT DOCUMENTS IN THE JACKSON COUNTY ENGINEERS OFFICE ROAD PROJECT S-2884. NOTE: THE PREVIOUSLY RECORDED COR. CERT. LOCATION FOR THIS CORNER BEING INDEX AS THE S 1/4 OF SAID SEC. 7 IS BEING REVISED AND MOVED 4.00 FEET EAST ALONG THE SECTION LINE AS SHOWN IN THE PLAT OF SURVEY BOOK 1-S PAGE 74, DOC. NO. 08-4255 DUE TO ADDITIONAL EVIDENCE AND RESEARCH FOUND IN THE COUNTY ENGINEERS OFFICE

-SE COR, NE-NW, SEC. 18, T.84N. R.6.E OF THE 5TH P.M. PLACED A 5/8" DIA STEEL REROD W/ORANGE CAP MARKED "WEBER PLS 15084" ESTABLISHED CORNER USING RIGHT OF WAY EASEMENT DOCUMENTS IN THE JACKSON COUNTY ENGINEERS OFFICE ROAD PROJECT S-2884.

-SW COR, NE-NW, SEC. 18, T.84N. R.6.E OF THE 5TH P.M. PLACED A 5/8" DIA STEEL REROD W/ORANGE CAP MARKED "WEBER PLS 15084" ESTABLISHED CORNER USING RIGHT OF WAY EASEMENT DOCUMENTS IN THE JACKSON COUNTY ENGINEERS OFFICE ROAD PROJECT S-2884.

(Show a minimum of three reference ties to durable physical objects, relevant monuments and physical conditions that will enable recovery of the corner.)

PLAN - VIEW



DWG. NO. 2008\HANSEN\COUNTY-PARCEL

	I HEREBY CERTIFY THAT THIS LAND SURVEYING DOCUMENT WAS PREPARED AND THE RELATED SURVEY WORK WAS PERFORMED BY ME OR UNDER MY DIRECT PERSONAL SUPERVISION AND THAT I AM A DULY LICENSED LAND SURVEYOR UNDER THE LAWS OF THE STATE OF IOWA.	
	<i>Michael J. Weber</i> MICHAEL J. WEBER LICENSE NUMBER 15084	<i>August 31, 2012</i> (DATE)
	MY LICENSE RENEWAL DATE IS DECEMBER 31, 2013	
	SHEETS COVERED BY THIS SEAL : THIS SHEET	
List Corners to be Indexed		
Corner		Sec Twp Range
N 1/4		18 84N 6E
SE COR., NE-NW		18 84N 6E
SW COR., NE-NW		18 84N 6E