

FILE NO. 04-3155
PAGE 295

ON JUL 13 AM 7:17

PHYLLIS M. GERLACH
JACKSON COUNTY, IOWA
RECORDER # 1.00

PREPARED BY:
WILLIAM HOLT, PLS
NORWEST SURVEYING SERVICES, INC.
301 E LINCOLNWAY
MORRISON, IL 61270

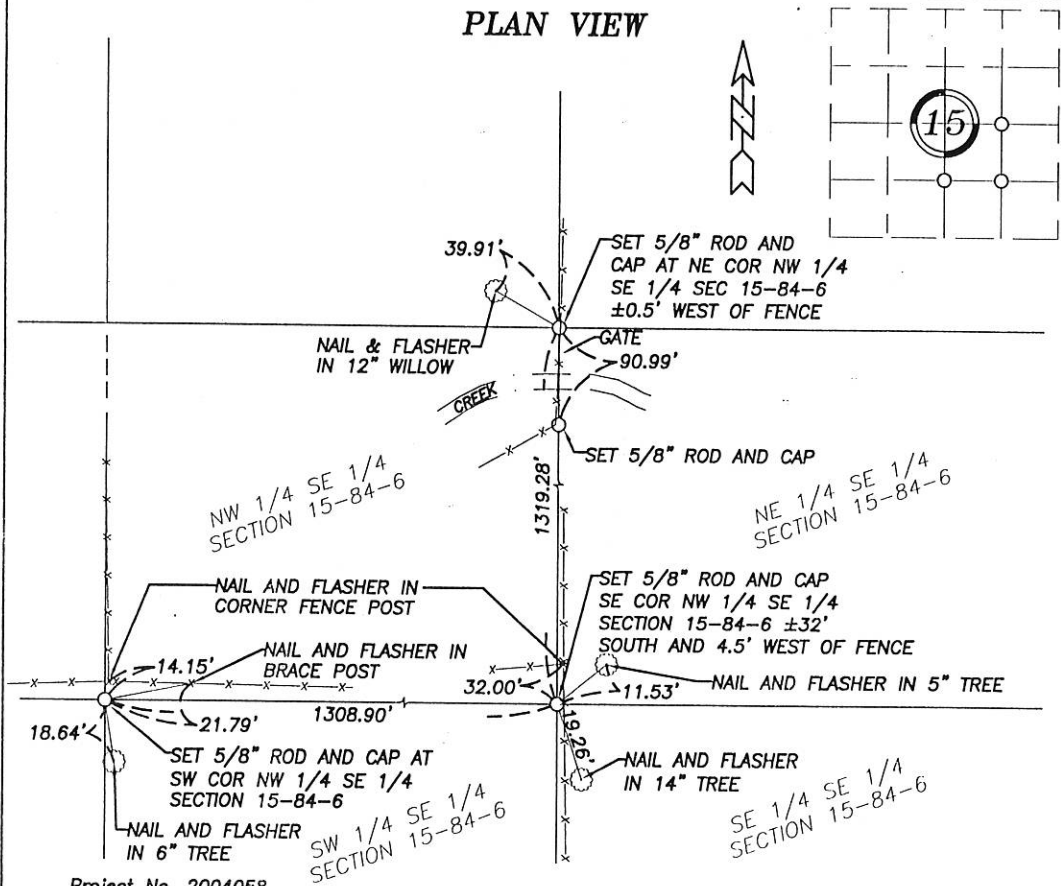
UNITED STATES PUBLIC LAND SURVEY CORNER CERTIFICATE OF

Land Survey Monuments in Section 15 in Township 84 North (T84N), Range 6 East (R6E)
of the Fifth Principal Meridian (5th PM), Jackson County, Iowa. (Not Previously Recorded)

Monuments were set at the locations described below in the Southeast Quarter (SE 1/4) of Section 15.

These corner locations were established at a prorata location using existing monuments, fences and occupation lines within this and adjoining Sections.

PLAN VIEW



Project No. 2004058

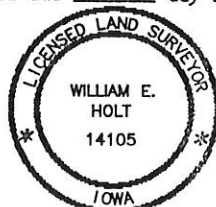
I hereby certify that the survey work was completed
and this land surveying document was prepared by
me or under my direct personal supervision and
that I am a duly registered land surveyor under the
laws of the State of Iowa.

Signature: William E. Holt

William E. Holt
Iowa Registration No. 14105

My Registration Expires on December 31, 2004

Dated this 30th day of June, 2004 C.E.



Corners to be Indexed

Corner	Section	Township	Range
NE Corner NW 1/4 SE 1/4	15	84N	6E
SW Corner NW 1/4 SE 1/4	15	84N	6E
SE Corner NW 1/4 SE 1/4	15	84N	6E

Book 2 Page 295



Document 15-1482

Book 2015 Page 1482 Type 15 001 Pages 1
Date 5/12/2015 Time 3:35 PM
Rec Amt \$7.00

ARLENE SCHAUF, RECORDER/REGISTRAR
JACKSON COUNTY IOWA

PREPARED BY: MICHAEL J. WEBER, WEBER SURVEYING, LLC, 26789 46TH AVE, BERNARD, IA 52032 (563) 879-4173

UNITED STATES PUBLIC LAND SURVEY CORNER CERTIFICATE OF

LAND SURVEY MONUMENTS SITUATED IN SECTION 15, TOWNSHIP 84 NORTH, RANGE 6 EAST
OF THE FIFTH PRINCIPAL MERIDIAN, JACKSON COUNTY, IOWA.
PREVIOUSLY RECORDED BK 2 PG 254, DOC. NO. 04-1375
(book, page, document number, etc.)

(Show reason for preparing this certificate, the evidence and detailed procedures used in establishing the corner positions and monumentation found or placed.)

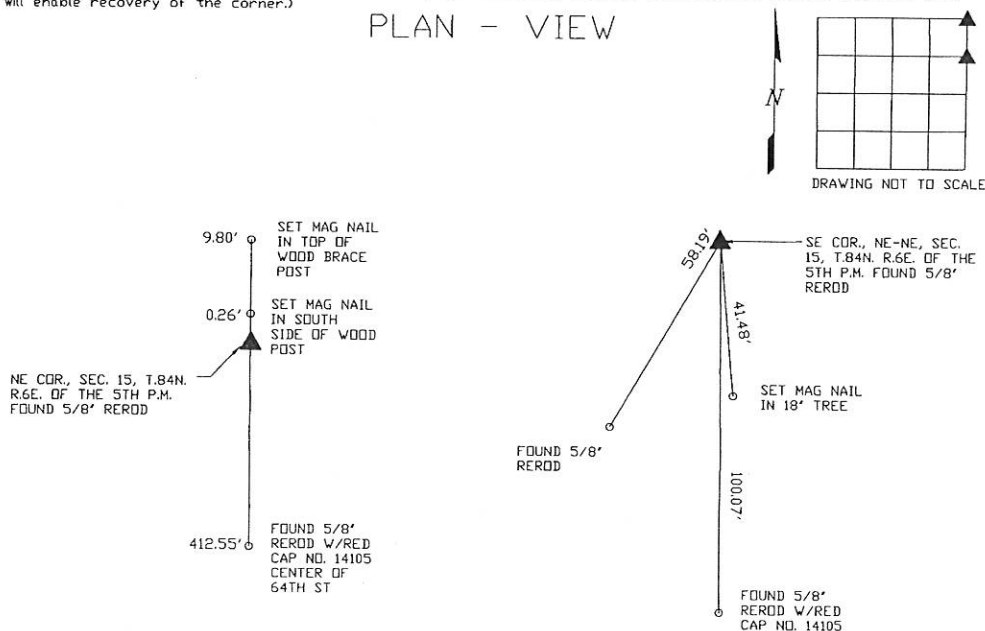
Monument Description and Remarks:

-NE COR., SEC. 15, T.84N. R.6E. OF THE 5TH P.M. FOUND 5/8" REROD PREVIOUSLY RECORDED IN BOOK 2 PAGE 254, DOC. NO. 04-1375 AS THE NW CORNER, SEC. 14, T.86N. R.6E. OF THE 5TH P.M. ESTABLISHED NEW TIES.

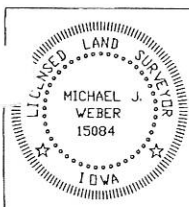
-SE COR., NE-NE, SEC. 15, T.84N. R.6E. OF THE 5TH P.M. FOUND 5/8" REROD PREVIOUSLY RECORDED IN BOOK 2 PAGE 254, DOC. NO. 04-1375 AS THE SW CORNER OF THE NW-NW, SEC. 14, T.86N. R.6E. OF THE 5TH P.M. ESTABLISHED NEW TIES.

(Show a minimum of three reference ties to durable physical objects, relevant monuments and physical conditions that will enable recovery of the corner.)

PLAN - VIEW



DWG. NO. 15008



I HEREBY CERTIFY THAT THIS LAND SURVEYING DOCUMENT WAS
PREPARED AND THE RELATED SURVEY WORK WAS PERFORMED BY ME OR
UNDER MY DIRECT PERSONAL SUPERVISION AND THAT I AM A DULY
LICENSED LAND SURVEYOR UNDER THE LAWS OF THE STATE OF IOWA.

Michael J. Weber April 27, 2015
MICHAEL J. WEBER (DATE)
LICENSE NUMBER 15084
MY LICENSE RENEWAL DATE IS DECEMBER 31, 2015

SHEETS COVERED BY THIS SEAL: THIS SHEET

List Corners to be Indexed

Corner	Sec	Twp	Range
NE COR.	15	84N	6E
SE COR. NE-NE	15	84N	6E