



Document 12-1552

Book 3 Page 43 Type 15 001 Pages 1  
Date 4/12/2012 Time 11:57 AM  
Rec Amt \$7.00

ARLENE SCHAUF, RECORDER/REGISTRAR  
JACKSON COUNTY IOWA

Prepared by Wm. Burger LandSurveyor 510 3rd Street West Court, Worthington, Iowa Phone 563 - 855 2028

UNITED STATES PUBLIC LAND SURVEY CORNER CERTIFICATE

Land Survey Monuments situated in Section 8, Township 85N, Range 2E, of the Fifth Principal Meridian, Jackson County, Iowa. Previously recorded in N/A in the Office of the County Recorder

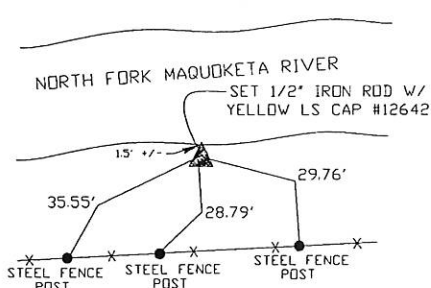
Monument Description and Remarks: (No Corner Certificates found at the County Recorders Office)

W1/4 CORNER - SET 1/2" IRON ROD W/YELLOW LS CAP #12642 - SET ON LINE BETWEEN THE FOUND SW CORNER AND THE CALCULATED NW CORNER AND USED INFORMATION FROM PLAT RECORDED IN THE OFFICE OF THE JACKSON COUNTY RECORDER IN PLAT BOOK 1-0, PAGE 24 TO SET THIS CORNER  
SW CORNER NW1/4 SW1/4 - SET 1/2" IRON ROD W/YELLOW LS CAP #12642 - SET ON LINE AND MIDWAY BETWEEN THE W1/4 CORNER AND THE SW CORNER  
SE CORNER NW1/4 SW1/4 - SET 1/2" IRON ROD W/YELLOW LS CAP #12642 - RUN STRAIGHT LINE FROM OPPOSITE 1/4 1/4 CORNERS AND SET AT POINT OF INTERSECTION

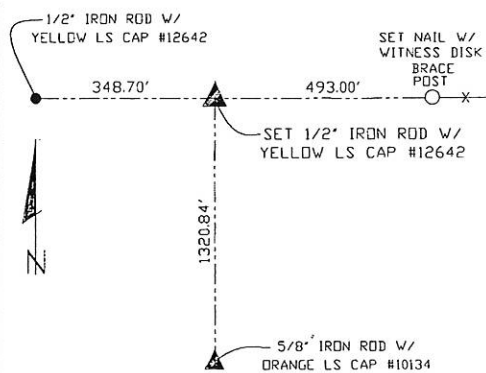
PLAN VIEW

W1/4 CORNER

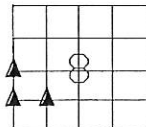
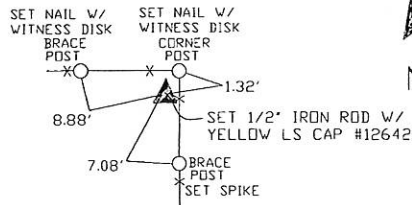
SE CORNER NW1/4 SW1/4



SET SPIKE AT ALL TIE POINTS



SW CORNER NW1/4 SW1/4



SEC. 8 TWP. 85N RANGE 2E

CORNERS TO BE INDEXED

W1/4 CORNER	8	85N	2E
SW CORNER NW1/4 SW1/4	8	85N	2E
SE CORNER NW1/4 SW1/4	8	85N	2E



I hereby certify that this land surveying document was prepared and related survey work was performed by me or under my direct personal supervision and that I am a duly licensed Land Surveyor under the laws of the State of Iowa.

William H. Burger 4/12/12  
William H. Burger Date

License number 12642

My license renewal date is December 31, 2012

Pages or Sheets covered by this seal: Sheet 1 of 1