

00 SEP 26 AM 10:50

PHYLLIS M. GERLACH
JACKSON COUNTY, IOWA

Prepared by: SCHNEIDER Land Surveying and Planning P.O. Box 105 Peosta, Iowa 52068 PR #319-556-9055

UNITED STATES PUBLIC LAND SURVEY CORNER CERTIFICATE OF

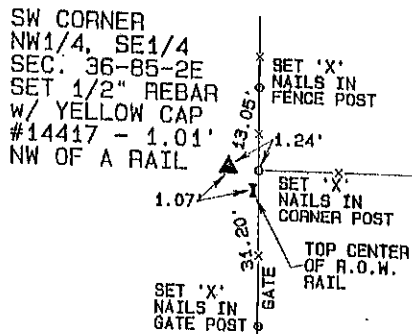
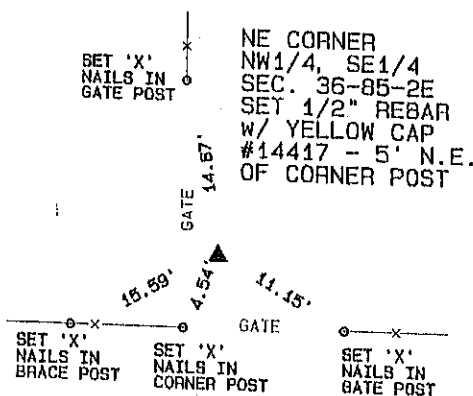
Land Survey Monuments situated in Section 36, Township 85 North, Range 2 East of the Fifth Principal Meridian, Jackson County, Iowa.

Previously recorded **NONE OF RECORD**
(Show reason for preparing this certificate, the evidence and detailed procedures used in establishing the corner positions and monumentation found or placed.)

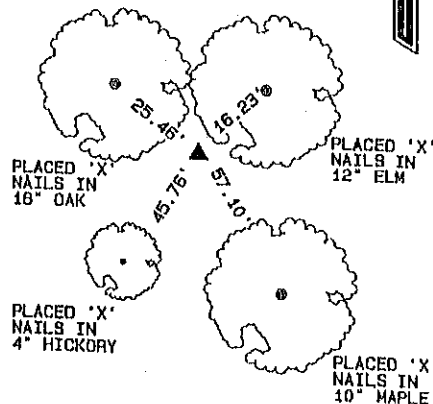
Monument Description and Remarks: THE NE CORNER OF THE NW1/4, SE1/4 WAS SET ON LINE AND AT A DISTANCE SPLIT BETWEEN THE CENTER AND E1/4 CORNER OF SECTION 36. THE SW CORNER OF THE NW1/4, SE1/4 WAS SET ON LINE AND AT A DISTANCE SPLIT BETWEEN THE CENTER AND S1/4 CORNER OF SECTION 36. THE SE CORNER OF THE NW1/4, SE1/4 WAS SET BY INTERSECTING EAST-WEST AND NORTH-SOUTH QUARTER LINES OF SOUTHEAST QUARTER OF SECTION 36.

PLAN - VIEW

(Show a minimum of three reference ties to durable physical objects, relevant monuments and physical conditions that will enable recovery of the corner.)



SE CORNER
NW1/4, SE1/4
SEC. 36-85-2E
SET 1/2" REBAR
W/ YELLOW CAP
#14417



I hereby certify that this land surveying document was prepared and the related survey work was performed by me or under my direct personal supervision and that I am a duly licensed Land Surveyor under the laws of the State of Iowa.

David P. Schneider 9/25/2000
David P. Schneider P.L.S. #14417 Date: 9/25/2000
My license renewal date is December 31, 2001.
Pages or sheets covered by this seal: THIS SHEET ONLY

SEAL



List Corners to be Indexed

Corners	Section	Twp	Range
NE CORNER NW1/4, SE1/4	36	85	2E
SW CORNER NW1/4, SE1/4	36	85	2E
SE CORNER NW1/4, SE1/4	36	85	2E

JOB NO. 00-0135

00.3301

FILE NO
BOOK 1 PAGE 449

00 SEP 26 AM 10:50

PHYLLIS M. GERLACH
JACKSON COUNTY, IOWA
RECORDER

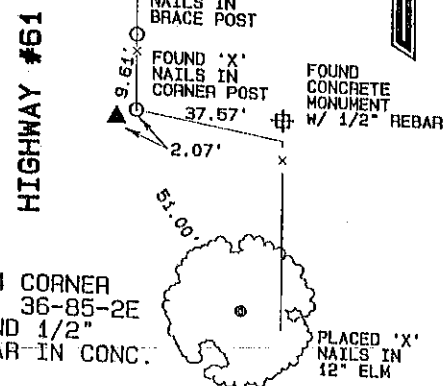
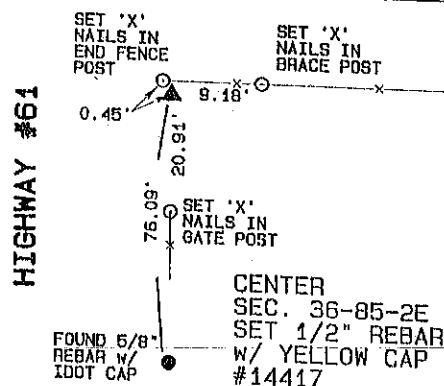
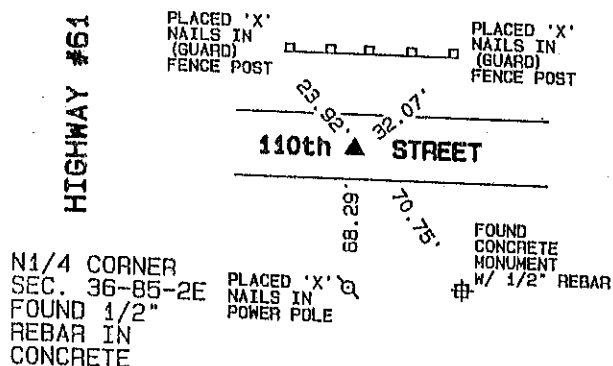
Prepared by: SCHNEIDER Land Surveying and Planning P.O. Box 105 Peosta, Iowa 52068 Ph#319-556-9055

UNITED STATES PUBLIC LAND SURVEY CORNER CERTIFICATE OFLand Survey Monuments situated in Section 36, Township 85 North, Range 2 East
of the Fifth Principal Meridian, Jackson County, Iowa.Previously recorded N1/4 & S1/4 corners, Book 1, Page 112

(Show reason for preparing this certificate, the evidence and detailed procedures used in establishing the corner positions and monumentation found or placed.)

Monument Description and Remarks:THE N1/4 CORNER AND S1/4 CORNER WERE TIED AS THEY WERE FOUND. MANY OF THE ORIGINAL TIES WERE REMOVED OR
DAMAGED DURING CONSTRUCTION OF HIGHWAY #61.THE CENTER OF SECTION WAS PLACED USING THE UNITED STATES PUBLIC SECTION CORNER CERTIFICATION AND LAND CORNER
SURVEY PREPARED BY DENNIS R. PRANGE OF THE I.D.O.T. ON 2/11/1993.**PLAN - VIEW**

(Show a minimum of three reference ties to durable physical objects, relevant monuments and physical conditions that will enable recovery of the corner.)



I hereby certify that this land surveying document was prepared and the related survey work was performed by me or under my direct personal supervision and that I am a duly licensed Land Surveyor under the laws of the State of Iowa.

David P. Schneider 7/25/2001
 David P. Schneider P.L.S. #14417 Date:
 My license renewal date is December 31, 2001.
 Pages or sheets covered by this seal: THIS SHEET ONLY

SEAL

**List Corners to be Indexed**

Corners	Section	Twp	Range
N1/4	36	85	2E
CENTER	36	85	2E
S1/4	36	85	2E



Document 21-1954

Type 15 001

Pages 1

Date 5/06/2021 Time 3:02 PM

Rec Amt \$7.00

ARLENE SCHAUF, RECORDER/REGISTRAR
JACKSON COUNTY IOWA

PREPARED BY: MICHAEL J. WEBER, WEBER SURVEYING, LLC, 26789 46TH AVE, BERNARD, IA 52032 (563) 879-4173

UNITED STATES PUBLIC LAND SURVEY CORNER CERTIFICATE
OFLAND SURVEY MONUMENTS SITUATED IN SECTION 36, TOWNSHIP 85 NORTH, RANGE 2 EAST
OF THE FIFTH PRINCIPAL MERIDIAN, JACKSON COUNTY, IOWA.
PREVIOUSLY RECORDED BK-1, PG-112

(book, page, document number, etc.)

(Show reason for preparing this certificate, the evidence and detailed procedures used in establishing the corner positions and monumentation found or placed.)

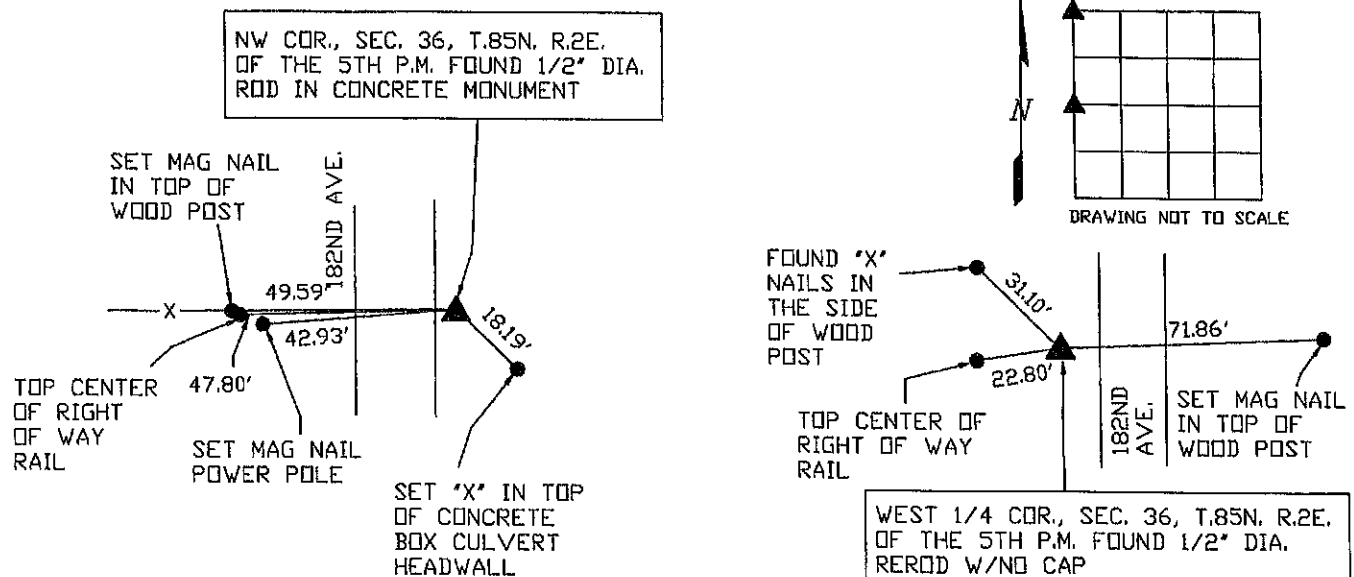
Monument Description and Remarks:

-NW COR., SEC. 36, T.85N. R.2E. OF THE 5TH P.M. FOUND 1/2" DIA. REROD IN CONCRETE MONUMENT AS SHOWN IN SEC. COR. CERT. PREVIOUSLY RECORDED IN BK-1, PG-112

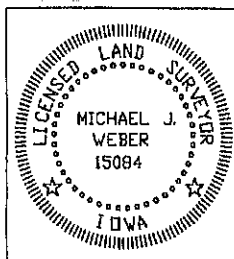
-WEST 1/4 COR., SEC. 36, T.85N. R.2E. OF THE 5TH P.M. FOUND 1/2" DIA. REROD AS SHOWN IN SEC. COR. CERT. PREVIOUSLY RECORDED IN BK-1, PG-112

(Show a minimum of three reference ties to durable physical objects, relevant monuments and physical conditions that will enable recovery of the corner.)

PLAN - VIEW



DWG. NO. 21018

I HEREBY CERTIFY THAT THIS LAND SURVEYING DOCUMENT WAS
PREPARED AND THE RELATED SURVEY WORK WAS PERFORMED BY ME OR
UNDER MY DIRECT PERSONAL SUPERVISION AND THAT I AM A DULY
LICENSED LAND SURVEYOR UNDER THE LAWS OF THE STATE OF IOWA.*Michael J. Weber* May 6, 2021
MICHAEL J. WEBER (DATE)

LICENSE NUMBER 15084

MY LICENSE RENEWAL DATE IS DECEMBER 31, 2021

SHEETS COVERED BY THIS SEAL: THIS SHEET

List Corners to be Indexed

Corner	Sec	Twp	Range
NW COR.	36	85N	2E
WEST 1/4 COR.	36	85N	2E