

97 2897

FILE NO. 100K. PAGE 327

1997 SEP 25 AM 9:55

SHIRLY RITENOUR
JACKSON COUNTY, IOWA
RECORDER

PREPARED BY WM. BURGER LANDSURVEYORS 510 3RD STREET WEST COURT, WORTHINGTON, IOWA 52070 PHONE (319) 855 2028

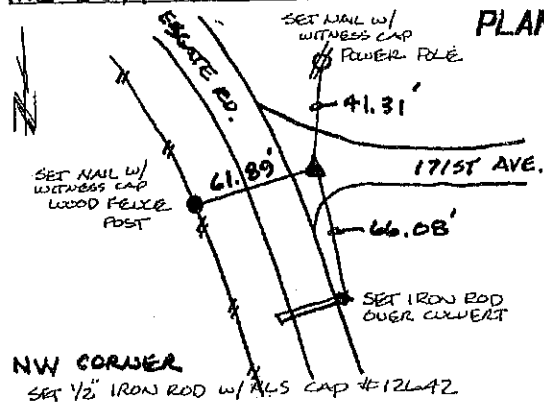
UNITED STATES PUBLIC LAND SURVEY CORNER CERTIFICATE

LAND SURVEY MONUMENT SITUATED IN SECTION 35, TOWNSHIP 85N, RANGE 2E, OF THE FIFTH PRINCIPAL MERIDIAN, JACKSON COUNTY, IOWA. PREVIOUSLY RECORDED IN NA IN COUNTY RECORDER'S OFFICE

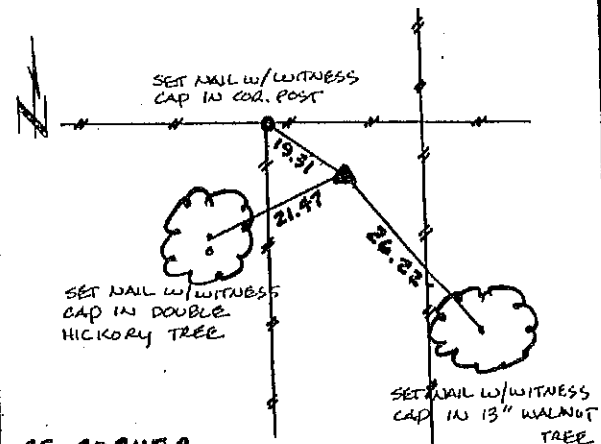
MONUMENT DESCRIPTION AND REMARKS: (NO CORNER CERTIFICATES FOUND AT THE COUNTY RECORDERS OFFICE)

NW CORNER NW 1/4 SW 1/4 - USED COUNTY HIGHWAY PLATS & EXISTING FENCELINE EVIDENCE TO ESTABLISH THIS CORNERNE CORNER NW 1/4 SW 1/4 - SET CORNER ON LINE & MIDWAY BETWEEN W 1/4 CORNER & CENTER OF SECTIONSW CORNER NW 1/4 SW 1/4 - SET CORNER ON LINE & MIDWAY BETWEEN SW CORNER & W 1/4 CORNERSE CORNER NW 1/4 SW 1/4 - RUN STRAIGHT LINES FROM OPPOSITE 16TH CORNERS OF THE SW 1/4 SEC. 35. SET CORNER AT POINT OF INTERSECTION.

PLAN VIEW

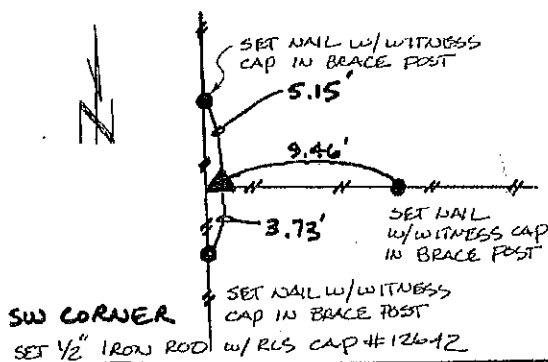
SET 1/2" IRON ROD w/ RLS CAP
#12642SET NAIL w/ WITNESS
CAP IN BOTH SIDES

NE CORNER



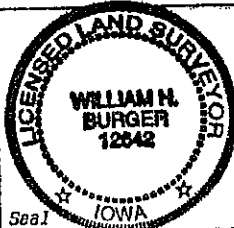
SE CORNER

SET 1/2" IRON ROD w/ RLS CAP #12642

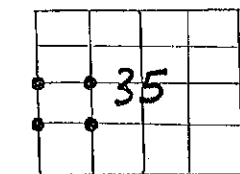


SW CORNER

SET 1/2" IRON ROD w/ RLS CAP #12642



Seal



Sec. 35 TWP. 85N Range 2E

I hereby certify that this land surveying document was prepared and related survey work was performed by me or under my direct personal supervision and that I am a duly licensed Land Surveyor under the laws of the State of Iowa.

William H. Burger 9/15/97
Date

License number 12642

My license renewal date is December 31, 1998

Pages or Sheet covered by this seal: Sheet 1 of 1

CORNERS TO BE INDEXED

CORNER

NW - NW 1/4 SW 1/4 SECTION 35 TWP. 85N RANGE 2E

NE - NW 1/4 SW 1/4 SECTION 35 TWP. 85N RANGE 2E

SE - NW 1/4 SW 1/4 SECTION 35 TWP. 85N RANGE 2E

SW - NW 1/4 SW 1/4 SECTION 35 TWP. 85N RANGE 2E

FILE NO. 04-575
BOOK 2 PAGE 228

04 FEB 10 AM 10:18

PHYLLIS M. GERLACH
JACKSON COUNTY, IOWA
RECORDER Fee \$11.00

PREPARED BY:
WILLIAM HOLT, PLS
NORWEST SURVEYING SERVICES, INC.
301 E LINCOLNWAY
MORRISON, IL 61270

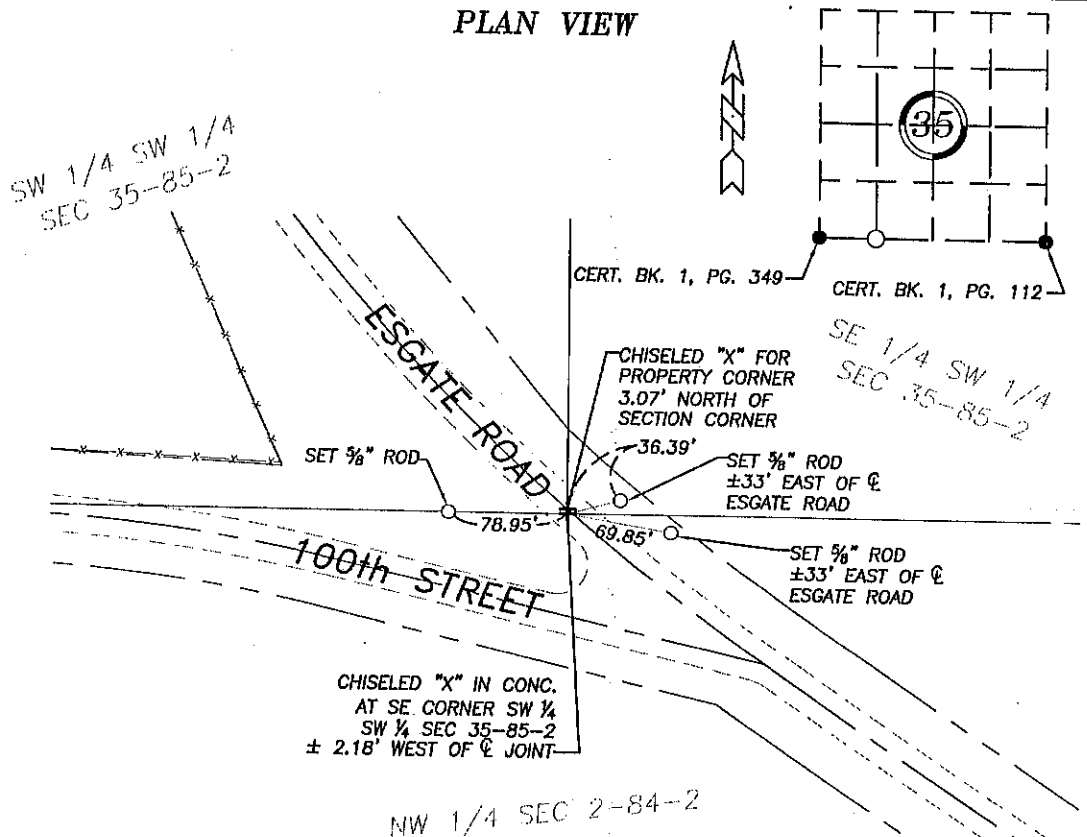
UNITED STATES PUBLIC LAND SURVEY CORNER CERTIFICATE OF

Land Survey Monuments in Section 35 in Township 85 North (T85N), Range 2 East (R2E)
of the Fifth Principal Meridian (5th PM), Jackson County, Iowa. (Not Previously Recorded)

A Monument was placed at the Southeast corner of the Southwest Quarter (SW 1/4) of the Southwest Quarter (SW 1/4), of Section 35 per the description below

The corner location was established at a prorata location using existing monuments at the Southwest corner and the Southeast corner of this Section.

PLAN VIEW



Project No. 2004008

I hereby certify that the survey work was completed and this land surveying document was prepared by me or under my direct personal supervision and that I am a duly registered land surveyor under the laws of the State of Iowa.

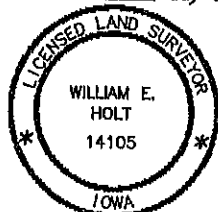
Signature: William E. Holt

William E. Holt

Iowa Registration No. 14105

My Registration Renews on December 31, 2004

Dated this 9th day of February, 2004 C.E.



Corners to be Indexed

Corner	Section	Township	Range
SE Corner SW 1/4 SW 1/4	35	85N	2E

Book 2 Page 228

FILE NO. 04-576
BOOK 2 PAGE 229

04 FEB 10 AM 10:18

PHYLLIS M. GERLACH
JACKSON COUNTY, IOWA
RECORDER *Fee \$11.00*

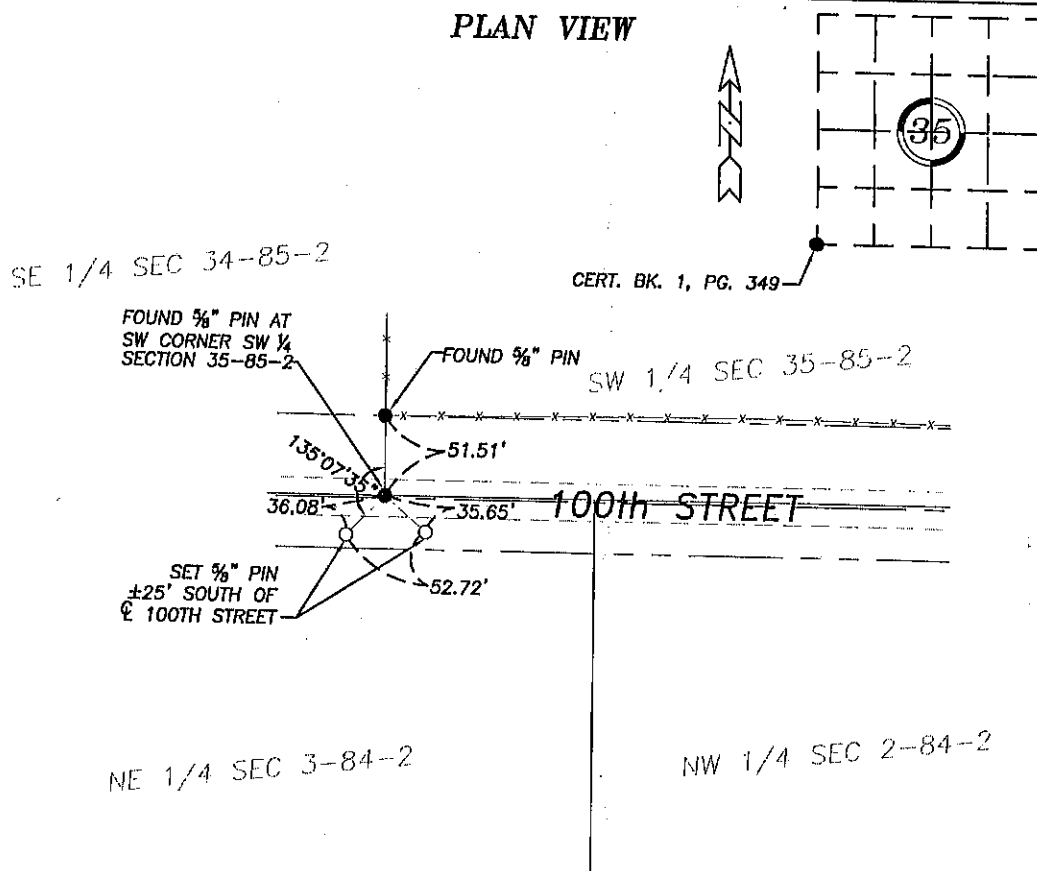
PREPARED BY:
WILLIAM HOLT, PLS
NORWEST SURVEYING SERVICES, INC.
301 E LINCOLNWAY
MORRISON, IL 61270

UNITED STATES PUBLIC LAND SURVEY CORNER CERTIFICATE OF

Land Survey Monuments in Section 35 in Township 85 North (T85N), Range 2 East (R2E)
of the Fifth Principal Meridian (5th PM), Jackson County, Iowa. (Not Previously Recorded)

A Monument was found at the Southwest corner of the Southwest Quarter (SW 1/4) of Section 35 per
the Corner Certificate filed in Book 1 at page 349.

PLAN VIEW



Project No. 2004008

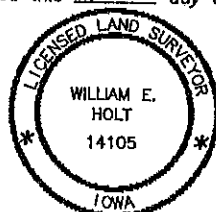
I hereby certify that the survey work was completed
and this land surveying document was prepared by
me or under my direct personal supervision and
that I am a duly registered land surveyor under the
laws of the State of Iowa.

Signature: William E. Holt

William E. Holt
Iowa Registration No. 14105

My Registration Renews on December 31, 2004

Dated this 9th day of February, 2004 C.E.



Corners to be Indexed

Corner	Section	Township	Range
SW Corner SW 1/4	35	85N	2E

Book 2 Page 229



Document 25-429

Type 15 001

Pages 1

Date 2/10/2025 Time 3:28 PM

Rec Amt \$7.00

ARLENE SCHAUF, RECORDER/REGISTRAR
JACKSON COUNTY IOWA

PREPARED BY: MICHAEL J. WEBER, WEBER SURVEYING, LLC, 26789 46TH AVE, BERNARD, IA 52032 (563) 879-4173

UNITED STATES PUBLIC LAND SURVEY CORNER CERTIFICATE OF LAND SURVEY MONUMENTS SITUATED IN SECTION 35, TOWNSHIP 85 NORTH, RANGE 2 EAST OF THE FIFTH PRINCIPAL MERIDIAN, JACKSON COUNTY, IOWA. PREVIOUSLY RECORDED

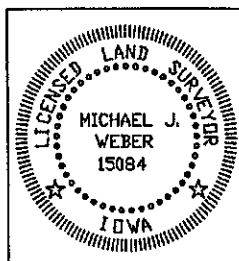
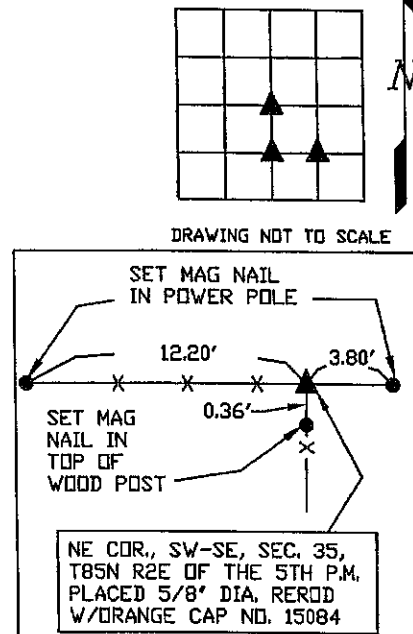
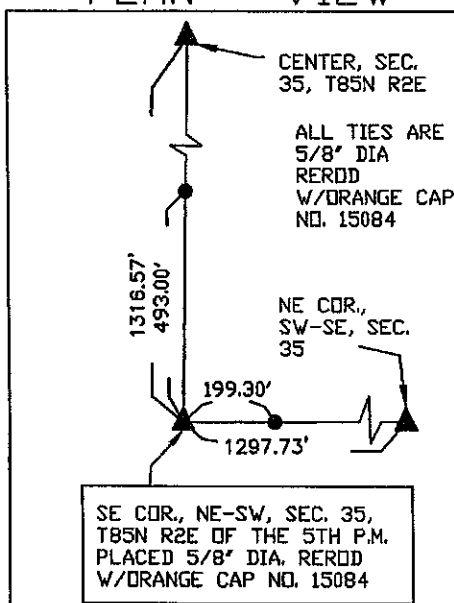
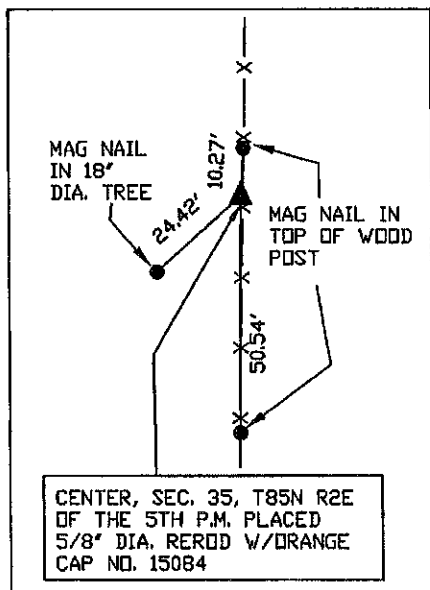
(book, page, document number, etc.)

(Show reason for preparing this certificate, the evidence and detailed procedures used in establishing the corner positions and monumentation found or placed.)

-CENTER, SEC. 35, T85N R2E OF THE 5TH P.M. PLACED 5/8" DIA. REROD W/ORANGE CAP NO. 15084. ESTABLISHED CORNER AT THE INTERSECTION OF A NORTH-SOUTH OCCUPATION FENCE LINE WITH A LINE BETWEEN THE EAST 1/4 CORNER AND THE WEST 1/4 CORNER.
-SE COR., NE-SW, SEC. 35, T85N R2E OF THE 5TH P.M. PLACED 5/8" DIA. REROD W/ORANGE CAP NO. 15084. ESTABLISHED CORNER AT THE INTERSECTION OF A NORTH-SOUTH OCCUPATION FENCE LINE LYING NORTH AND A EAST-WEST OCCUPATION FENCE LINE LYING EAST.
-NE COR., SW-SE, SEC. 35, T85N R2E OF THE 5TH P.M. PLACED 5/8" DIA. REROD W/ORANGE CAP NO. 15084. ESTABLISHED CORNER AT THE INTERSECTION OF A NORTH-SOUTH OCCUPATION FENCE LINE LYING SOUTH AND A EAST-WEST OCCUPATION FENCE LINE LYING WEST.

(Show a minimum of three reference ties to durable physical objects, relevant monuments and physical conditions that will enable recovery of the corner.)

PLAN - VIEW



I HEREBY CERTIFY THAT THIS LAND SURVEYING DOCUMENT WAS PREPARED AND THE RELATED SURVEY WORK WAS PERFORMED BY ME OR UNDER MY DIRECT PERSONAL SUPERVISION AND THAT I AM A DULY LICENSED LAND SURVEYOR UNDER THE LAWS OF THE STATE OF IOWA.

Michael J. Weber
MICHAEL J. WEBER

LICENSE NUMBER 15084

MY LICENSE RENEWAL DATE IS DECEMBER 31, 2025

SHEETS COVERED BY THIS SEAL: THIS SHEET

List Corners to be Indexed
Corner Sec Twp Range

CENTER, 35-85-2E

SE COR., NE-SW 35-85-2E

NE COR., SW-SE 35-85-2E

DWG. NO. 25008