

02 2023
FILE NO
BOOK PAGE 568

02 MAY -2 AM 11:01

PHYLLIS M. GERLACH
JACKSON COUNTY, IOWA

RECORDER

Prepared by Wm. Burger Land Surveyors

510 3rd Street West Court, Worthington, Iowa

Phone 319 - 855 0128

Fee 6.00

UNITED STATES PUBLIC LAND SURVEY CORNER CERTIFICATE

Land Survey Monuments situated in Section 32, Township 85N, Range 2E, of the Fifth Principal Meridian, Jackson County, Iowa. Previously recorded in N/A in the Office of the County Recorder

Monument Description and Remarks: (No Corner Certificates found at the County Recorders Office)

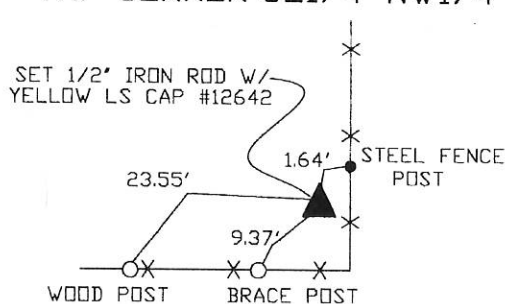
NW CORNER SE1/4 NW1/4 - SET 1/2" IRON ROD W/YELLOW LS CAP #12642 - RUN STRAIGHT LINES FROM OPPOSITE 1/4 1/4 CORNERS AND SET AT POINT OF INTERSECTION

NE CORNER SE1/4 NW1/4 - SET 1/2" IRON ROD W/YELLOW LS CAP #12642 - SET ON LINE AND MIDWAY BETWEEN THE N1/4 CORNER AND THE CENTER OF SECTION

SW CORNER SE1/4 NW1/4 - SET 1/2" IRON ROD W/YELLOW LS CAP #12642 - SET ON LINE AND MIDWAY BETWEEN THE W1/4 CORNER AND THE CENTER OF SECTION

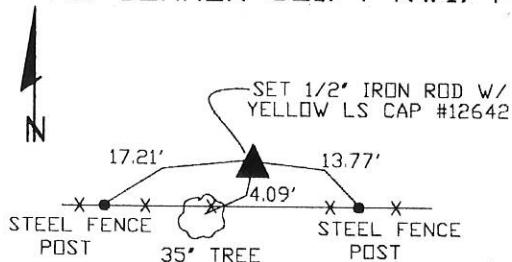
PLAN VIEW

NW CORNER SE1/4 NW1/4



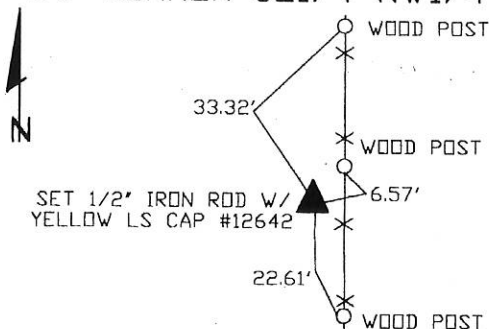
SET WITNESS CAP
AT ALL TIE POINTS

NE CORNER SE1/4 NW1/4

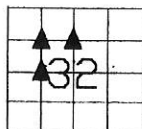


SET WITNESS CAP
AT ALL TIE POINTS

SW CORNER SE1/4 NW1/4



SET WITNESS CAP
AT ALL TIE POINTS



SEAL

SEC. 32 TWP. 85N RANGE 2E

CORNERS TO BE INDEXED

NW CORNER SE1/4 NW1/4	32	85N	2E
NE CORNER SE1/4 NW1/4	32	85N	2E
SW CORNER SE1/4 NW1/4	32	85N	2E

I hereby certify that this land surveying document was prepared and related survey work was performed by me or under my direct personal supervision and that I am a duly licensed Land Surveyor under the laws of the State of Iowa.

William H. Burger 4/22/02
William H. Burger Date

License number 12642

My license renewal date is December 31, 2002

Pages or Sheets covered by this seal Sheet 1 of 1

1-569

02-2024
FILE NO. 1 PAGE 569
02 MAY -2 AM 11:01
PATRICK M. GERLACH
JACKSON COUNTY, IOWA
RECORDER

Prepared by Wm. Burger Land Surveyors 510 3rd Street West Court, Worthington, Iowa Phone 319 - 855 2029

UNITED STATES PUBLIC LAND SURVEY CORNER CERTIFICATE

Fee \$6.00

Land Survey Monuments situated in Section 32, Township 85N, Range 2E, of the Fifth Principal Meridian, Jackson County, Iowa. Previously recorded in N/A In the Office of the County Recorder
Monument Description and Remarks: (No Corner Certificates found at the County Recorders Office)

NE CORNER NE1/4 SE1/4 - SET 1/2" IRON ROD W/YELLOW LS CAP #12642 - USED EXISTING FENCELINE EVIDENCE AND SET MONUMENT AT THE CORNER POST

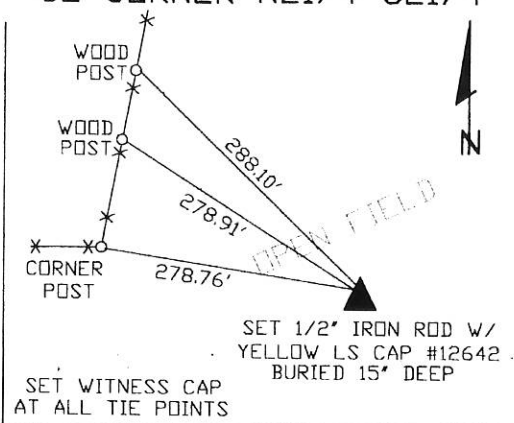
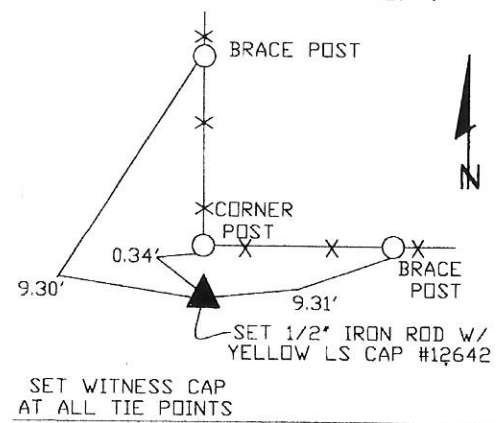
SE CORNER NE1/4 SE1/4 - SET 1/2" IRON ROD W/YELLOW LS CAP #12642 - SET ON LINE AND MIDWAY BETWEEN THE E1/4 CORNER AND THE SE CORNER

SW CORNER SE1/4 SW1/4 - SET 1/2" IRON ROD W/YELLOW LS CAP #12642 - USED EXISTING FENCELINE EVIDENCE AND SET MONUMENT 1320' WEST OF S1/4 CORNER

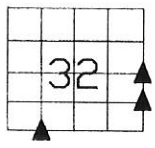
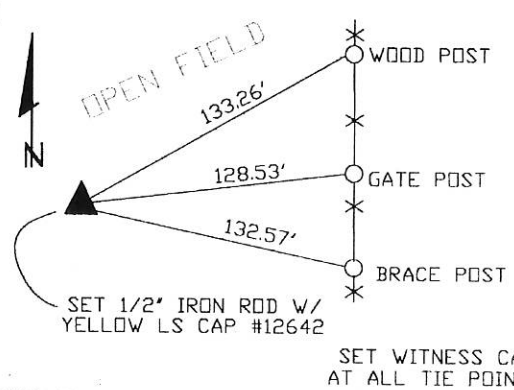
PLAN VIEW

NW CORNER NE1/4 SE1/4

SE CORNER NE1/4 SE1/4



SW CORNER SE1/4 SW1/4



SEAL SEC. 32 TWP. 85N RANGE 2E

I hereby certify that this land surveying document was prepared and related survey work was performed by me or under my direct personal supervision and that I am a duly licensed Land Surveyor the laws of the State of Iowa.

William H. Burger 4/24/02
William H. Burger Date
License number 12642
My license renewal date is December 31, 2002
Pages or Sheets covered by this seal: Sheet 1 of 1

CORNERS TO BE INDEXED

NE CORNER NE1/4 SE1/4	32	85N	2E
SE CORNER NE1/4 SE1/4	32	85N	2E
SW CORNER SE1/4 SW1/4	32	85N	2E