

31

P.I. STA. 19+19.4
 $\Delta = 84^{\circ}40' \text{ RT.}$

P.I. STA. 7+63.83
 $\Delta = 48^{\circ}01' \text{ RT.}$

NOT SET

(29) 1355.0' (2)

2571'

(A) 2690.0' (1) (3)

118.8'

(A) --- (3)

SURVEY
R-2-E

MADE FOR

MADE BY

R.L.S. NO. 2051
F-1117

SEPT. - OCT. 1959

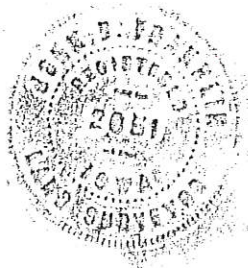
FOR COMPLETE INFORMATION ON THIS SURVEY, SEE FIELD NOTES ON FILE IN AMES OFFICE.

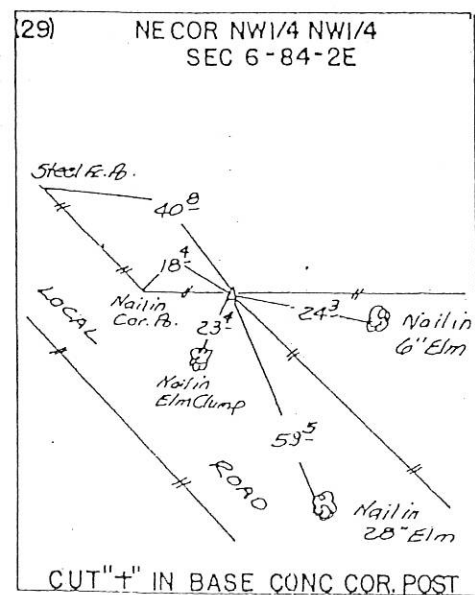
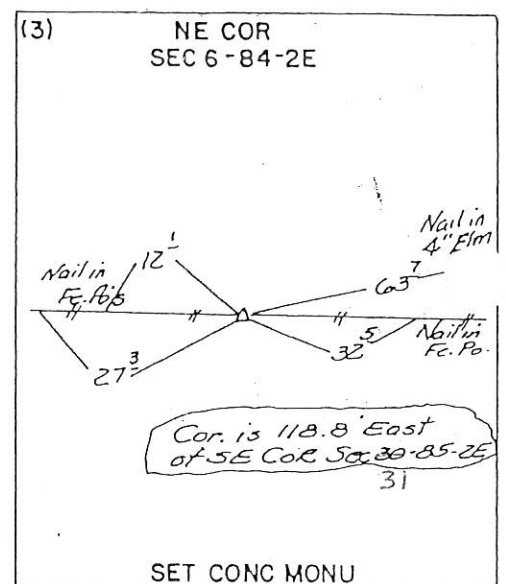
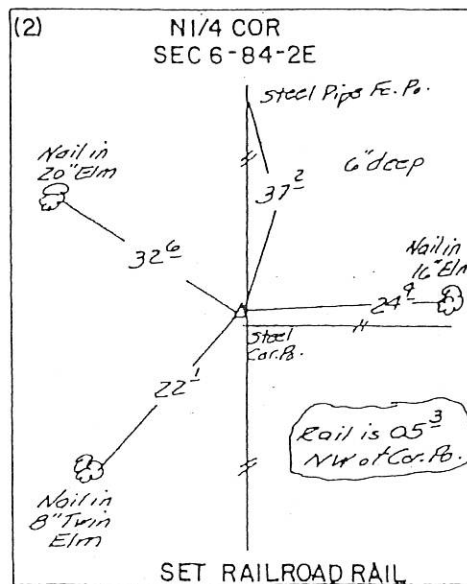
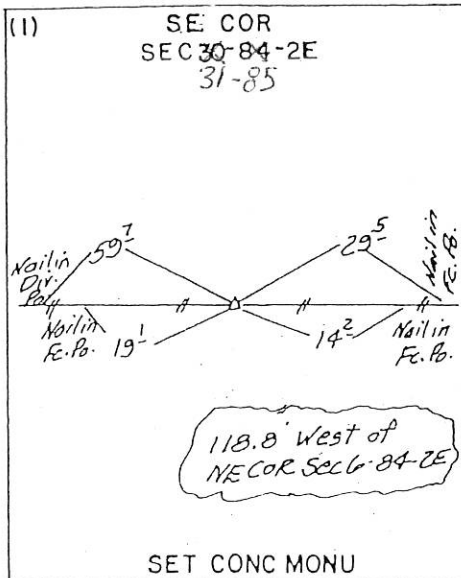
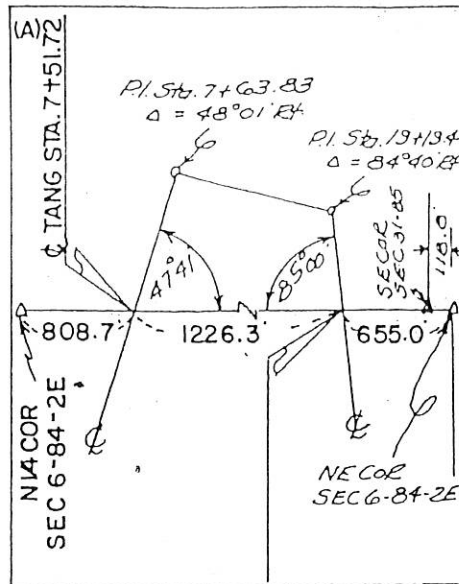
I, HEREBY CERTIFY THAT THIS PLAT IS A TRUE REPRESENTATION OF A SURVEY MADE BY ME, ASSISTED BY JAMES D. FRANKLIN, R. F. POPELKA, R. H. JANS, W. M. MYERS, F. A. NORTON, L. R. MCGUIRE, R. P. VAN HORBECK, ELVIN K. IRONS AND R. MCCREA, ALL DULY SWORN, AND IS CORRECT TO THE BEST OF MY KNOWLEDGE.

SIGNED: December 8, 1959

JOHN D. FRANKLIN

R.L.S. NO. 2051





FILE NO. **03-4180**
 BOOK **2** PAGE **174**

03 JUL 16 AM 10:42

PHYLLIS M. GERLACH
 JACKSON COUNTY, IOWA
 RECORDER **Feb 6.**

Prepared by Wm. Burger Land Surveyors 510 3rd Street West Court, Worthington, Iowa Phone 563 - 855 2028

UNITED STATES PUBLIC LAND SURVEY CORNER CERTIFICATE

Land Survey Monuments situated in Section 31, Township 85N, Range 2E, of the Fifth Principal Meridian, Jackson County, Iowa. Previously recorded in N/A in the Office of the County Recorder

Monument Description and Remarks: (No Corner Certificates found at the County Recorders Office)

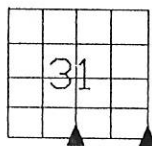
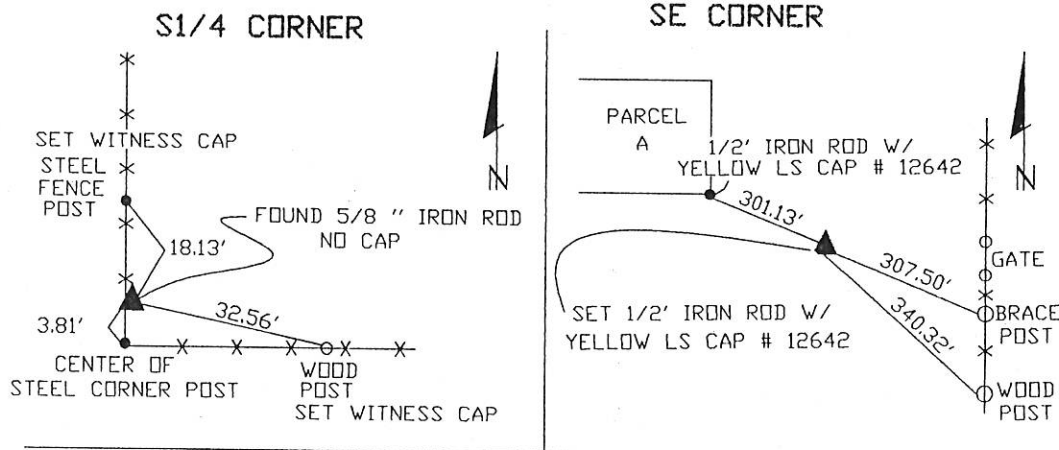
SE CORNER - SET 1/2" IRON ROD W/YELLOW LS CAP #12642

USED INFORMATION FROM ORIGINAL NOTES AND PROPORTIONED THE DISTANCE BETWEEN THE S1/4 CORNER AND THE SE CORNER OF SAID OF SECTION 6 TO RELATE TO THE DISTANCE BETWEEN THE SW CORNER AND THE S1/4 CORNER. THIS APPEARS TO FIT WITH EXISTING FENCELINES IN SECTION 32.

S1/4 CORNER - F.D. 5/8" IRON ROD W/NO LS CAP

FOUND THIS ROD ON FENCELINE TO NORTH. AFTER TALKING TO FARMERS THIS FENCE IS THE PROPERTY LINE BETWEEN FARMS. ALSO SHOT IN FENCE AT SW CORNER OF SAID SECTION 31, ORIGINAL NOTES CALLS OUT 37 CHAINS BETWEEN SW CORNER AND S1/4 CORNER OF SAID SECTION 31, THE FOUND ROD CHECKED WITHIN 1 FOOT. ACCEPTED FOUND ROD.

PLAN VIEW



SEAL

SEC. 31 TWP. 85N RANGE 2E

I hereby certify that this land surveying document was prepared and related survey work was performed by me or under my direct personal supervision and that I am a duly licensed Land Surveyor under the laws of the State of Iowa.

William H. Burger 7/9/03
 William H. Burger Date

License number 12642

My license renewal date is December 31, 2002

Pages or Sheets covered by this seal: Sheet 1 of 1

CORNERS TO BE INDEXED

SE CORNER 31 85N 2E

S1/4 CORNER 31 85N 2E



Document 13-4713

Book 3 Page 116 Type 15 001 Pages 1
Date 11/18/2013 Time 2:47 PM
Rec Amt \$7.00

ARLENE SCHAUF, RECORDER/REGISTRAR
JACKSON COUNTY IOWA

PREPARED BY: MICHAEL J. WEBER, WEBER SURVEYING, LLC, 26789 46TH AVE, BERNARD, IA 52032 (563) 879-4173

UNITED STATES PUBLIC LAND SURVEY CORNER CERTIFICATE OF

LAND SURVEY MONUMENTS SITUATED IN SECTION 31, TOWNSHIP 85 NORTH, RANGE 2 EAST
OF THE FIFTH PRINCIPAL MERIDIAN, JACKSON COUNTY, IOWA.
PREVIOUSLY RECORDED NONE

(book, page, document number, etc.)

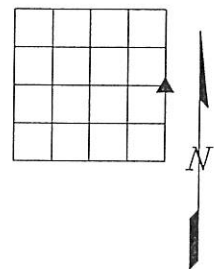
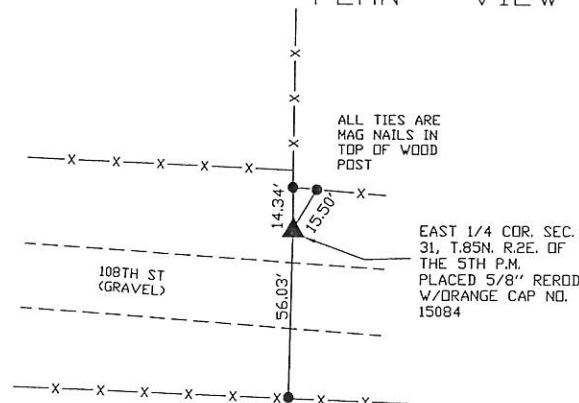
(Show reason for preparing this certificate, the evidence and detailed procedures used in establishing the corner positions and monumentation found or placed.)

Monument Description and Remarks:

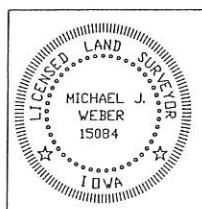
- EAST 1/4 COR. SEC. 31, T.85N. R.2E. OF THE 5TH P.M. PLACED 5/8" REROD W/ORANGE CAP NO. 15084. ESTABLISHED CORNER USING OCCUPATION FENCELINE FROM THE WEST AND NORTH.

(Show a minimum of three reference ties to durable physical objects, relevant monuments and physical conditions that will enable recovery of the corner.)

PLAN - VIEW



DWG. NO. 13071



I HEREBY CERTIFY THAT THIS LAND SURVEYING DOCUMENT WAS
PREPARED AND THE RELATED SURVEY WORK WAS PERFORMED BY ME OR
UNDER MY DIRECT PERSONAL SUPERVISION AND THAT I AM A DULY
LICENSED LAND SURVEYOR UNDER THE LAWS OF THE STATE OF IOWA.

Michael J. Weber *November 12, 2013*
MICHAEL J. WEBER (DATE)
LICENSE NUMBER 15084

MY LICENSE RENEWAL DATE IS DECEMBER 31, 2013

SHEETS COVERED BY THIS SEAL, *Three Sheets*

List Corners to be Indexed		
Corner	Sec	Twp Range
EAST 1/4	31	85N 2E