

UNITED STATES PUBLIC LAND SURVEY CORNER CERTIFICATE

OF

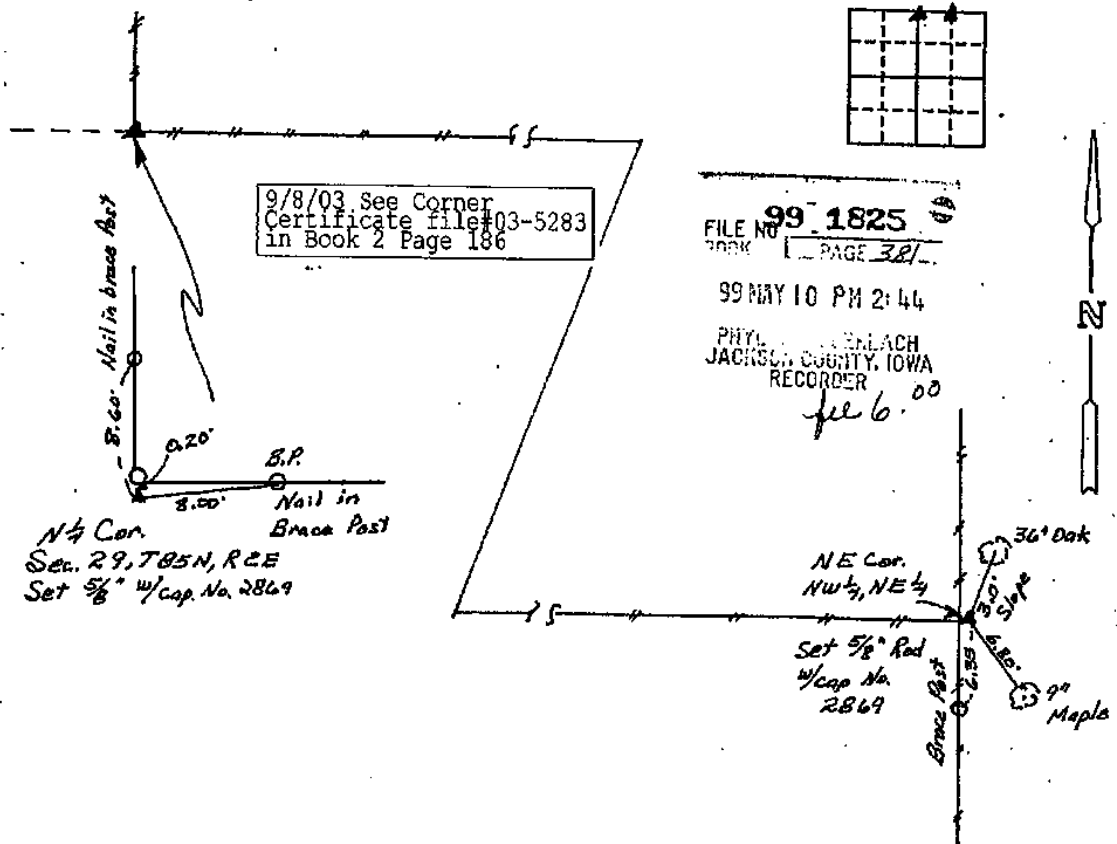
Land Survey Monuments situated in Section 29, Township 35N, Range 2E, of the Fifth Principal Meridian, Jackson, County, Iowa.
Previously recorded in Book not recorded, Page .

(Show reason for preparing this certificate, the evidence and detailed procedures used in establishing the corner positions and monumentation found or placed.)

Monument Description and Remarks: No recorded information was available.
Corners were set at established intersections of existing fences.

PLAN - VIEW

(Show a minimum of three reference ties to durable physical objects, relevant monuments and physical conditions that will enable recovery of the corner.)

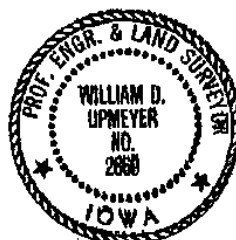


I hereby certify that the survey work was completed and this certificate was prepared by me or under my direct personal supervision and that I am a duly registered land surveyor under the laws of the state of Iowa.

William D. Upmeyer 5-10-99

REGISTERED LAND SURVEYOR NO. 2869

SEAL



List Corners to be Indexed

Corners	Section	Twp	Range
N 1/4	29	35N	2E
NE of NW 1/4, NE 1/4	29	35N	2E



Document 12-4230

Book 3 Page 66 Type 15 001 Pages 1

Date 10/05/2012 Time 8:44 AM

Rec Amt \$7.00

ARLENE SCHAUF, RECORDER/REGISTRAR
JACKSON COUNTY IOWA

Prepared by *Wm. Burger Land Surveyor* 610 3rd Street West Court, Worthington, Iowa Phone 563 - 865 2028

UNITED STATES PUBLIC LAND SURVEY CORNER CERTIFICATE

Land Survey Monuments situated in Section 29, Township 85N, Range 2E, of the Fifth Principal Meridian, Jackson County, Iowa. Previously recorded in N/A in the Office of the County Recorder

Monument Description and Remarks: (No Corner Certificates found at the County Records Office)

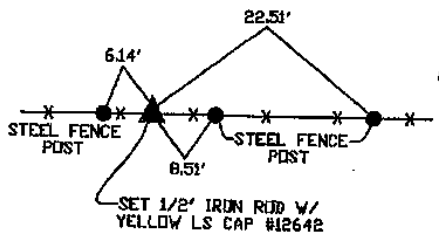
NW CORNER SE1/4 NW1/4 - SET 1/2" IRON ROD W/ YELLOW LS CAP #12642 - RUN STRAIGHT LINES FROM OPPOSITE 1/4 1/4 CORNERS AND ADJUSTED CORNER SOUTH TO EAST/WEST FENCELINE

NE CORNER SE1/4 NW1/4 - SET 1/2" IRON ROD W/ YELLOW LS CAP #12642 - USED EXISTING FENCELINE EVIDENCE AND SET AT THE CORNER POST

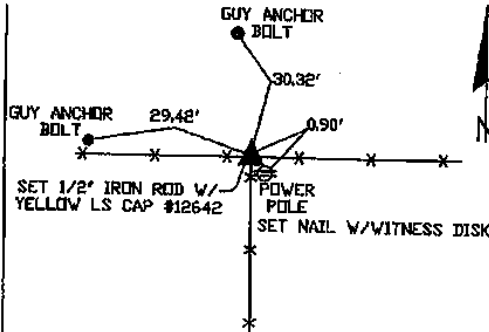
CENTER OF SECTION - SET 1/2" IRON ROD W/ YELLOW LS CAP #12642 - RUN STRAIGHT LINES FROM OPPOSITE 1/4 CORNERS AND SET AT POINT OF INTERSECTION

PLAN VIEW

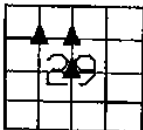
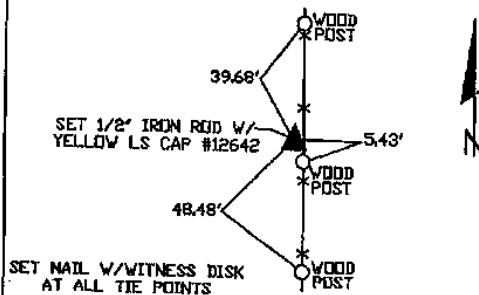
NW CORNER SE1/4 NW1/4



NE CORNER SE1/4 NW1/4



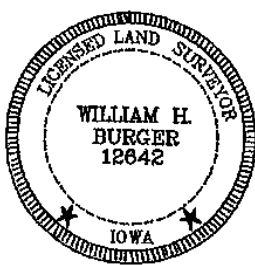
CENTER OF SECTION



SEC. 29 TWP. 85N RANGE 2E

CORNERS TO BE INDEXED

NW CORNER SE1/4 NW1/4	29	85N	2E
NE CORNER SE1/4 NW1/4	29	85N	2E
CENTER OF SECTION	29	85N	2E



I hereby certify that this land surveying document was prepared and related survey work was performed by me or under my direct personal supervision and that I am a duly licensed Land Surveyor under the laws of the State of Iowa.

William H. Burger 9/13/12
William H. Burger Date

License number 12642

My license renewal date is December 31, 2012

Pages or Sheets covered by this seal: Sheet 1 of 1



Document 20-3409

Type 15 001 Pages 1
Date 8/24/2020 Time 11:17 AM
Rec Amt \$7.00

ARLENE SCHAUF, RECORDER/REGISTRAR
JACKSON COUNTY IOWA

PREPARED BY: MICHAEL J. WEBER, WEBER SURVEYING, LLC, 26789 46TH AVE, BERNARD, IA 52032 (563) 879-4173

UNITED STATES PUBLIC LAND SURVEY CORNER CERTIFICATE OF

LAND SURVEY MONUMENTS SITUATED IN SECTION 29, TOWNSHIP 85 NORTH, RANGE 2 EAST
OF THE FIFTH PRINCIPAL MERIDIAN, JACKSON COUNTY, IOWA.
PREVIOUSLY RECORDED NONE

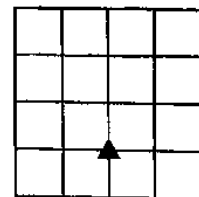
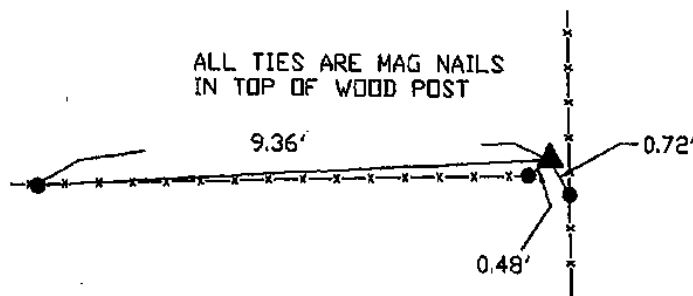
(book, page, document number, etc)

(Show reason for preparing this certificate, the evidence and detailed procedures used in establishing the corner positions and monumentation found or placed.)

-SE COR., NE-SW, SEC. 29, T.87N. R.2E. OF THE 5TH P.M. PLACED 5/8" DIA. REROD W/ORANGE CAP NO. 15084. ESTABLISHED CORNER AT THE INTERSECTION OF OCCUPATION FENCELINES RUNNING NORTH-SOUTH & WEST

(Show a minimum of three reference ties to durable physical objects, relevant monuments and physical conditions that will enable recovery of the corner.)

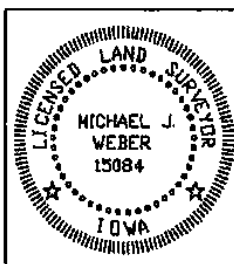
PLAN - VIEW



DRAWING NOT TO SCALE

SE COR., NE-SW, SEC. 29,
T.87N. R.2E. OF THE 5TH P.M.
PLACED 5/8" DIA. REROD
W/ORANGE CAP NO. 15084

DWG. NO. 20088-HAGER



I HEREBY CERTIFY THAT THIS LAND SURVEYING DOCUMENT WAS
PREPARED AND THE RELATED SURVEY WORK WAS PERFORMED BY ME OR
UNDER MY DIRECT PERSONAL SUPERVISION AND THAT I AM A DULY
LICENSED LAND SURVEYOR UNDER THE LAWS OF THE STATE OF IOWA.

Michael J. Weber August 21, 2020
MICHAEL J. WEBER (DATE)

LICENSE NUMBER 15084
MY LICENSE RENEWAL DATE IS DECEMBER 31, 2021

SHEETS COVERED BY THIS SEAL: THIS SHEET

List Corners to be Indexed
Corner Sec Twp Range

SE COR., NE-SW 29 85N 2E