



Document 11-631

Book 2 Page 758 Type 15 001 Pages 1

Date 2/15/2011 Time 8:34 AM

Reo Amt \$9.00

ARLENE SCHAUF, RECORDER/REGISTRAR  
JACKSON COUNTY IOWA

PREPARED BY: MICHAEL J. WEBER, WEBER SURVEYING, LLC, 26789 46TH AVE, BERNARD, IA 52032 (563) 879-4173

## UNITED STATES PUBLIC LAND SURVEY CORNER CERTIFICATE OF

LAND SURVEY MONUMENTS SITUATED IN SECTION 22, TOWNSHIP 85 NORTH, RANGE 2 EAST  
OF THE FIFTH PRINCIPAL MERIDIAN, JACKSON COUNTY, IOWA,  
PREVIOUSLY RECORDED NONE UNLESS OTHERWISE NOTED

(Show reason for preparing this certificate, the evidence and detailed procedures used in establishing the corner positions and monumentation found or placed.)

### Monument Description and Remarks:

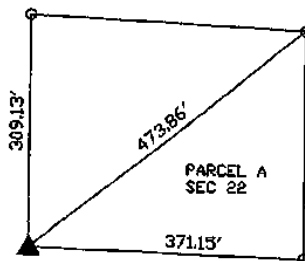
-SW COR., SEC. 22, T.85N. R.2E. OF THE 5TH P.M. PLACED 5/8" DIA STEEL REROD W/ORANGE PLASTIC CAP MARKED "WEBER PLS 15084" ESTABLISHED CORNER USING OCCUPATION FENCELINES RUNNING SOUTH AND WEST

-SW COR., NW-NW, SEC. 22, T.85N. R.2E. OF THE 5TH P.M. PLACED 5/8" DIA STEEL REROD W/ORANGE PLASTIC CAP MARKED "WEBER PLS 15084" ESTABLISHED CORNER ONLINE BETWEEN THE NW AND SW CORNER OF SEC. 22, AND A 1/4 OF THE DISTANCE BETWEEN SAID CORNERS SOUTH OF THE NW CORNER.

(Show a minimum of three reference ties to durable physical objects, relevant monuments and physical conditions that will enable recovery of the corner.)

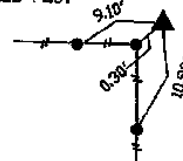
### PLAN - VIEW

ALL TIES ARE 5/8" DIA STEEL REROD W/ORANGE PLASTIC CAP MARKED "WEBER PLS 15084" AT THE CORNERS OF PARCEL A

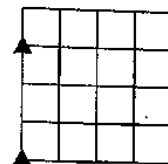


SV COR., NW-NW, SEC. 22, T.85N. R.2E. OF THE 5TH P.M. PLACED 5/8" DIA STEEL REROD W/ORANGE PLASTIC CAP MARKED "WEBER PLS 15084"

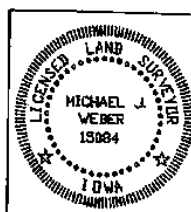
ALL TIES ARE NAG NAILS IN THE SIDE OF WOOD POST



SV COR., SEC. 22, T.85N. R.2E. OF THE 5TH P.M. PLACED 5/8" DIA STEEL REROD W/ORANGE PLASTIC CAP MARKED "WEBER PLS 15084"



DWG. NO. 2007\BANDY2\WILSON



I HEREBY CERTIFY THAT THIS LAND SURVEYING DOCUMENT WAS PREPARED AND THE RELATED SURVEY WORK WAS PERFORMED BY ME OR UNDER MY DIRECT PERSONAL SUPERVISION AND THAT I AM A DULY LICENSED LAND SURVEYOR UNDER THE LAWS OF THE STATE OF IOWA.

MICHAEL J. WEBER  
LICENSE NUMBER 15084  
MY LICENSE RENEWAL DATE IS DECEMBER 31, 2011

SHEETS COVERED BY THIS SEAL: This sheet

Corner	Sec	Twp	Range
SW COR.	22	85N	2E
SW COR., NW-NW	22	85N	2E

Book 2 Page 758



Document 20-2439

Type 15'001

Pages 1

Date 6/24/2020 Time 8:23 AM

Rec Amt \$7.00

ARLENE SCHAUF, RECORDER/REGISTRAR  
JACKSON COUNTY IOWA

PREPARED BY: MICHAEL J. WEBER, WEBER SURVEYING, LLC, 26789 46TH AVE, BERNARD, IA 52032 (563) 879-4173

## UNITED STATES PUBLIC LAND SURVEY CORNER CERTIFICATE OF

LAND SURVEY MONUMENTS SITUATED IN SECTION 22, TOWNSHIP 85 NORTH, RANGE 2 EAST  
OF THE FIFTH PRINCIPAL MERIDIAN, JACKSON COUNTY, IOWA.  
PREVIOUSLY RECORDED NONE

(book, page, document number, etc.)

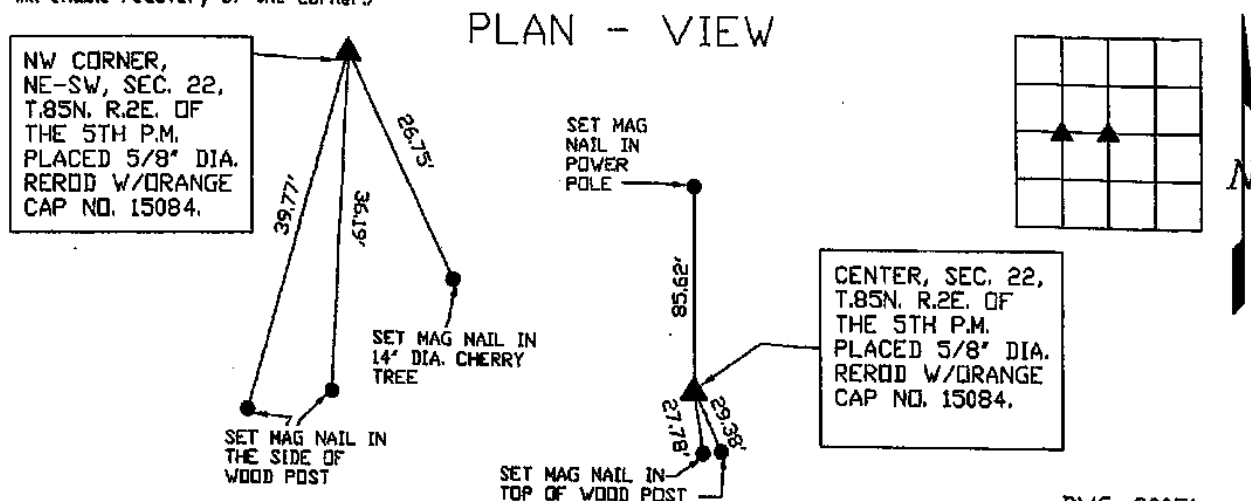
(Show reason for preparing this certificate, the evidence and detailed procedures used in establishing the corner positions and monumentation found or placed.)

Monument Description and Remarks:

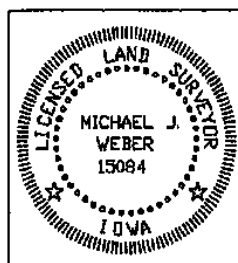
-CENTER, SEC. 22, T.85N. R.2E. OF THE 5TH P.M. PLACED 5/8" DIA. REROD W/ORANGE CAP NO. 15084. ESTABLISHED CORNER AT THE INTERSECTION OF THE CENTERLINE OF 142ND AVENUE WITH AN OCCUPATION FENCELINE RUNNING NORTH AND SOUTH.

-NW CORNER, NE-SW, SEC. 22, T.85N. R.2E. OF THE 5TH P.M. PLACED 5/8" DIA. REROD W/ORANGE CAP NO. 15084. ESTABLISHED CORNER AT THE INTERSECTION OF THE CENTERLINE OF 142ND AVENUE WITH AN OCCUPATION FENCELINE FROM THE SOUTH RUNNING NORTH AND SOUTH.

(Show a minimum of three reference ties to durable physical objects, relevant monuments and physical conditions that will enable recovery of the corner.)



DWG. 20051



I HEREBY CERTIFY THAT THIS LAND SURVEYING DOCUMENT WAS  
PREPARED AND THE RELATED SURVEY WORK WAS PERFORMED BY ME OR  
UNDER MY DIRECT PERSONAL SUPERVISION AND THAT I AM A DULY  
LICENSED LAND SURVEYOR UNDER THE LAWS OF THE STATE OF IOWA.

*Michael J. Weber* June 1, 2020  
MICHAEL J. WEBER (DATE)

LICENSE NUMBER 15084

MY LICENSE RENEWAL DATE IS DECEMBER 31, 2021

SHEETS COVERED BY THIS SEAL: This sheet

List Corners to be Indexed			
Corner	Sec	Twp	Range
CENTER	22	85N	2E
NW COR., NE-SW, 22	85N	2E	