

PHYLLIS M. GERLACH, RECORDER
JACKSON COUNTY IOWA

Prepared by: SCHNEIDER Land Surveying and Planning, Inc. P.O. Box 128 Farley, Iowa 52046 563-744-3631

UNITED STATES PUBLIC LAND SURVEY CORNER CERTIFICATE OF

Land Survey Monuments situated in Section 17, Township 85 North, Range 2 East
of the Fifth Principal Meridian, Jackson County, Iowa.
Previously recorded (NONE OF RECORD)

(Show reason for preparing this certificate, the evidence and detailed procedures used in establishing the corner positions and monumentation found or placed.)

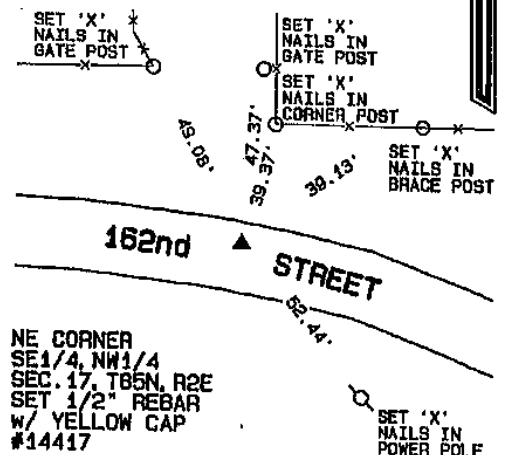
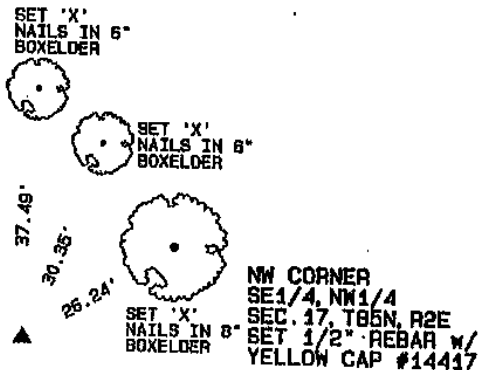
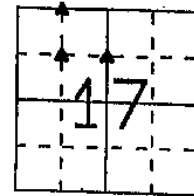
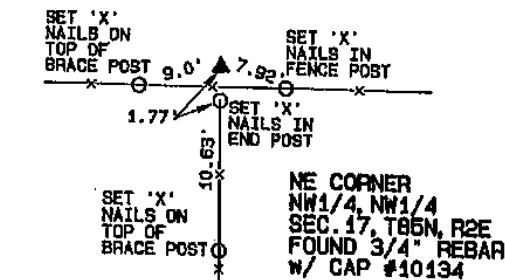
Monument Description and Remarks: A 3/4" REBAR w/ CAP #10134 WAS FOUND AT THE NE CORNER OF THE NW1/4 OF THE NW1/4 OF SECTION 17, T85N, R2E.

THE NW CORNER OF THE SE1/4 OF THE NW1/4 OF SECTION 17, T85N, R2E WAS ESTABLISHED AT THE THEORETICAL CENTER OF THE NW1/4 OF SAID SECTION 17.

THE NE CORNER OF THE SE1/4 OF THE NW1/4 OF SECTION 17, T85N, R2E WAS ESTABLISHED AT THE MIDPOINT OF A LINE FROM THE NW1/4 CORNER TO THE CENTER OF SAID SECTION 17.

PLAN - VIEW

(Show a minimum of three reference ties to durable physical objects, relevant monuments and physical conditions that will enable recovery of the corner.)



I hereby certify that this land surveying document was prepared and the related survey work was performed by me or under my direct personal supervision and that I am a duly licensed Land Surveyor under the laws of the State of Iowa.

David P. Schneider 1/30/2006
David P. Schneider P.L.S. #14417 Date:
My license renewal date is December 31, 2007.

Pages or sheets covered by this seal: THIS SHEET ONLY

SCHNEIDER
Land Surveying & Planning, Inc.
P.O. Box 128 Farley, Iowa 52046
Ph. #563-744-3631 Fax#563-744-3629



List Corners to be Indexed

Corners	Section	Twp	Range
NE CORNER NW1/4, NW1/4	17	85N	2E
NW CORNER SE1/4, NW1/4	17	85N	2E
NE CORNER SE1/4, NW1/4	17	85N	2E



Document 06-591

Book 2 Page 422 Type 06 023 Pages 1

Date 2/15/2006 Time 9:19 AM

Rec Amt \$7.00

PHYLLIS M. GERLACH, RECORDER
JACKSON COUNTY IOWA

Prepared by: SCHNEIDER Land Surveying and Planning, Inc. P.O. Box 128 Farley, Iowa 52046 563-744-3631

UNITED STATES PUBLIC LAND SURVEY CORNER CERTIFICATE OF

Land Survey Monuments situated in Section 17, Township 85 North, Range 2 East
of the Fifth Principal Meridian, Jackson County, Iowa.
Previously recorded (NONE OF RECORD)

(Show reason for preparing this certificate, the evidence and detailed procedures used in establishing the corner positions and monumentation found or placed.)

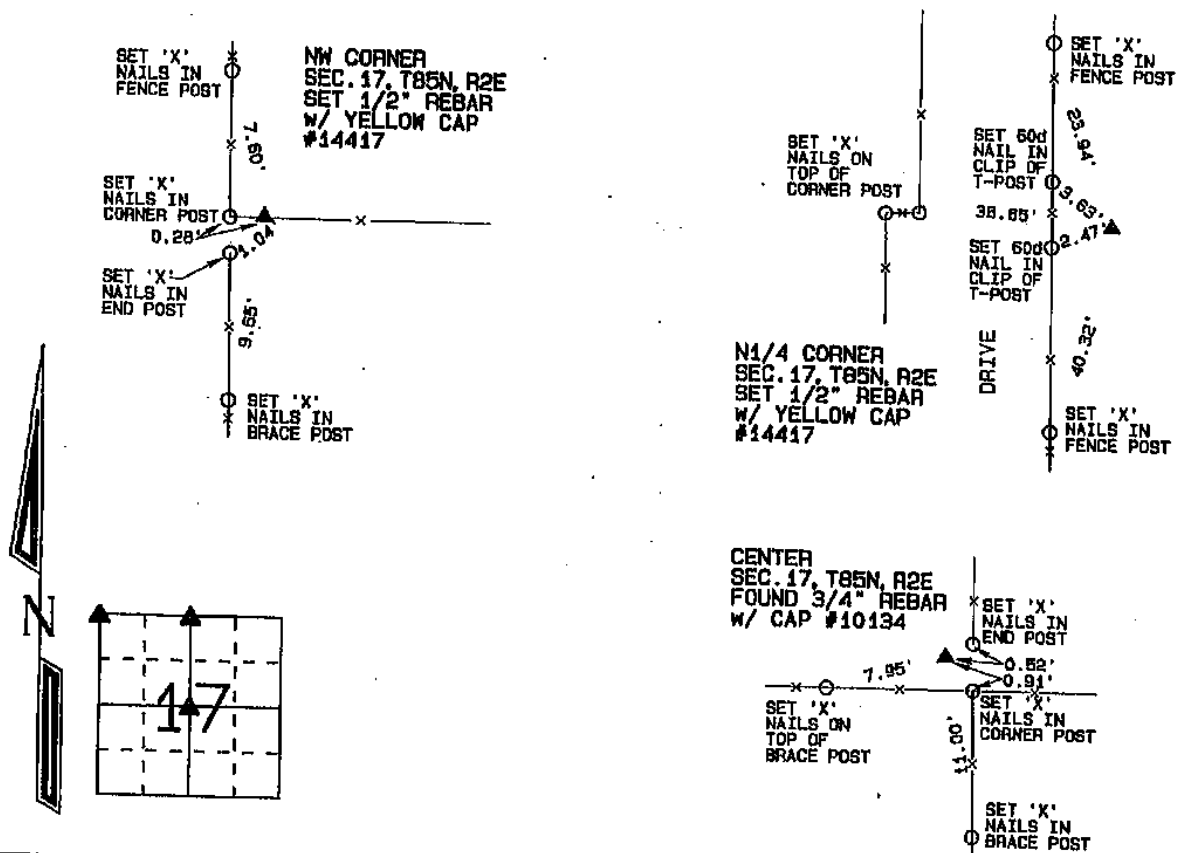
Monument Description and Remarks: THE NW CORNER OF SECTION 17, T85N, R2E WAS ESTABLISHED AS
ILLUSTRATED ON A PLAT OF SURVEY FILED IN BOOK 1-E AT PAGE 138.

THE N1/4 CORNER OF SECTION 17, T85N, R2E WAS ESTABLISHED BY DOUBLING THE DISTANCE ALONG THE NORTH LINE OF THE
N1/4 OF THE N1/4 OF SAID SECTION 17.

A 3/4" REBAR W/ CAP #10134 WAS FOUND AT THE CENTER OF SECTION 17, T85N, R2E. THE REBAR WAS TIED AND USED AS THE
CENTER OF SAID SECTION 17.

PLAN - VIEW

(Show a minimum of three reference ties to durable physical objects, relevant monuments and physical conditions that will enable recovery of the corner.)



I hereby certify that this land surveying document was prepared and the related survey work was performed by me or under my direct personal supervision and that I am a duly licensed Land Surveyor under the laws of the State of Iowa.

David P. Schneider P.L.S. #14417

Date: 1/30/2006

My license renewal date is December 31, 2007.

Pages or sheets covered by this seal: THIS SHEET ONLY

SCHNEIDER

Land Surveying & Planning, Inc.

P.O. Box 128 Farley, Iowa 52046
Ph. #563-744-3631 Fax #563-744-3629



List Corners to be Indexed

Corners	Section	Twp	Range
NW CORNER	17	85N	2E
N1/4	17	85N	2E
CENTER	17	85N	2E



Document 19-3023

Type 15 001

Pages 1

Date 9/18/2019 Time 8:29 AM

Rec Amt \$7.00

ARLENE SCHAUF, RECORDER/REGISTRAR
JACKSON COUNTY IOWA

PREPARED BY: MICHAEL J. WEBER, WEBER SURVEYING, LLC, 26789 46TH AVE, BERNARD, IA 52032 (563) 879-4173.

UNITED STATES PUBLIC LAND SURVEY CORNER CERTIFICATE OF

LAND SURVEY MONUMENTS SITUATED IN SECTION 17, TOWNSHIP 85 NORTH, RANGE 2 EAST
OF THE FIFTH PRINCIPAL MERIDIAN, JACKSON COUNTY, IOWA.
PREVIOUSLY RECORDED SEE NOTES BELOW

(book, page, document number, etc.)

(Show reason for preparing this certificate, the evidence and detailed procedures used in establishing the corner positions and monumentation found or placed.)

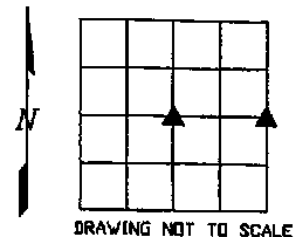
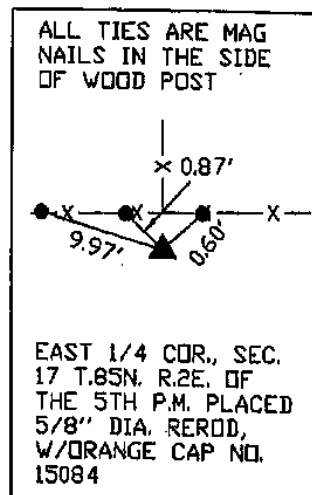
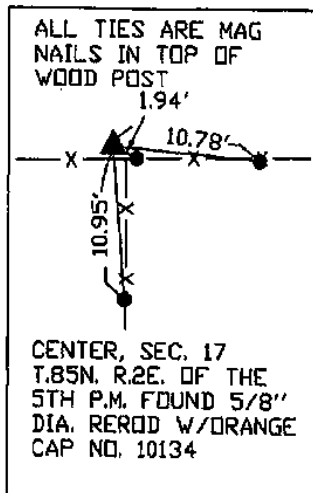
Monument Description and Remarks:

-EAST 1/4 COR., SEC. 17, T.85N. R.2E. OF THE 5TH P.M. PLACED 5/8" DIA. REROD W/ORANGE PLASTIC CAP NO. 15084. ESTABLISHED CORNER AT THE OCCUPATION FENCE RUNNING EAST, WEST AND NORTH.

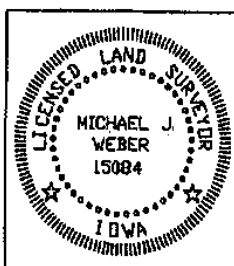
-CENTER, SEC. 17 T.85N. R.2E. OF THE 5TH P.M. FOUND 5/8" DIA. REROD, W/ORANGE CAP NO. 10134 PER SEC. COR. CERT. BK 2 PG 422, DOC. NO. 06-591, ESTABLISHED NEW TIES.

(Show a minimum of three reference ties to durable physical objects, relevant monuments and physical conditions that will enable recovery of the corner.)

PLAN - VIEW



DWG. NO. 18082



I HEREBY CERTIFY THAT THIS LAND SURVEYING DOCUMENT WAS
PREPARED AND THE RELATED SURVEY WORK WAS PERFORMED BY ME OR
UNDER MY DIRECT PERSONAL SUPERVISION AND THAT I AM A DULY
LICENSED LAND SURVEYOR UNDER THE LAWS OF THE STATE OF IOWA.

Michael J. Weber
MICHAEL J. WEBER

DATE

September 17, 2019

LICENSE NUMBER 15084

MY LICENSE RENEWAL DATE IS DECEMBER 31, 2019

SHEETS COVERED BY THIS SEAL: THIS SHEET

List Corners to be Indexed
Corner Sec Twp Range

EAST 1/4 COR 17 85N 2E
CENTER 17 85N 2E