

99-2108
FILE NO. _____
BOOK _____ PAGE 388

99 MAY 28 PM 12:10

PHYLLIS M. GERLACH
JACKSON COUNTY, IOWA
RECORDER

6

BRAIN ENGINEERING, INC., 777 10TH STREET, MARION, IOWA 52302 PH. (319) 373-1318

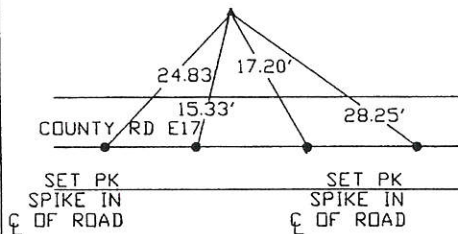
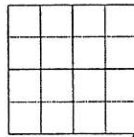
UNITED STATES PUBLIC LAND SURVEY CORNER CERTIFICATE

LAND SURVEY MONUMENTS SITUATED IN SECTION 16, TOWNSHIP 85 NORTH
RANGE 02 WEST OF THE 5TH P.M., _____ JACKSON _____ COUNTY, IOWA.

NO SCALE



SE CORNER



PREVIOUSLY RECORDED IN BOOK _____ PAGE _____

MONUMENT DESCRIPTION AND HOW ESTABLISHED _____

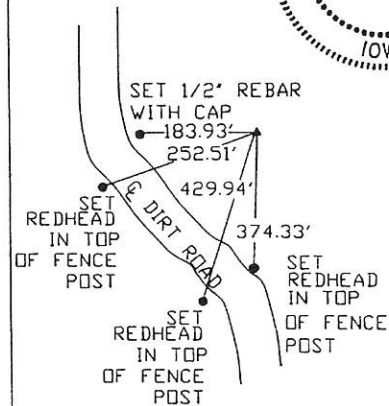
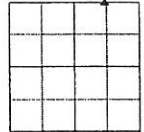
SET 1/2" REBAR WITH YELLOW CAP #11310 REFERENCING

PREVIOUS SURVEY

NO SCALE



NE CORNER NW 1/4
NE 1/4



PREVIOUSLY RECORDED IN BOOK _____ PAGE _____

MONUMENT DESCRIPTION AND HOW ESTABLISHED _____

SET 1/2" REBAR WITH YELLOW CAP #11310. AT MIDPOINT

OF NORTH LINE NE 1/4

I hereby declare that this plat, survey or report was made by me or under my direct personal supervision and that I am a duly registered Land Surveyor under the laws of the State of Iowa.

Signed Clarence J. Walton Date 5/27/99
Clarence J. Walton L.S. Iowa Reg No. 11310
My Registration Renewal Date Is December 31, 1999

CORNERS TO BE INDEXED

CORNER	SECTION	TOWNSHIP	RANGE
SE CORNER	16	T85N	R2E
NE CORNER	16	T85N	R2W
NE 1/4 NW 1/4	16	T85N	R2W

BRAIN ENGINEERING, INC.

777 10TH STREET
MARION, IOWA 52302
(319) 373-1318

23979-10