

FILE NO. 03-1507  
PAGE 623

03 MAR 19 AM 8:34

PHYLLIS M. GERLACH  
JACKSON COUNTY, IOWA  
RECORDER

Prepared by Wm. Burger Land Surveyors

510 3rd Street West Court, Worthington, Iowa

Phone 563-855-2028

*fee 6.00*

### UNITED STATES PUBLIC LAND SURVEY CORNER CERTIFICATE

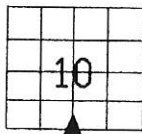
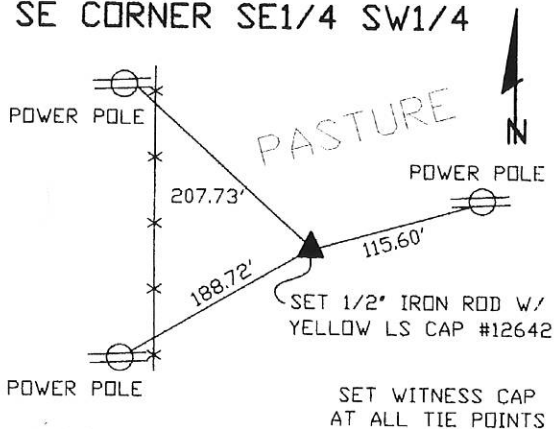
Land Survey Monuments situated in Section 10, Township 85N, Range 2E, of the Fifth Principal Meridian, Jackson County, Iowa, Previously recorded in N/A in the Office of the County Recorder

Monument Description and Remarks: (No Corner Certificates found at the County Recorders Office)

SE CORNER SE1/4 SW1/4 - SET 1/2" IRON ROD W/YELLOW LS CAP #12642 - SET ON LINE  
AND MIDWAY BETWEEN THE SW CORNER AND THE SE CORNER OF SECTION 10; METAL  
DETECTED THE AREA BUT NOTHING WAS FOUND

#### PLAN VIEW

SE CORNER SE1/4 SW1/4



SEAL

SEC. 10 TWP. 85N RANGE 2E

I hereby certify that this land surveying document was prepared and related survey work was performed by me or under my direct personal supervision and that I am a duly licensed Land Surveyor the laws of the State of Iowa.

*William H. Burger* 3/18/03  
William H. Burger Date

License number 12642

My license renewal date is December 31, 2004

Pages or Sheets covered by this seal: Sheet 1 of 1

#### CORNERS TO BE INDEXED

SE CORNER SE1/4 SW1/4 10 85N 2E



Document 04-4969

Book 2 Page 315 Type 06 23 Pages 1  
Date 11/05/2004 Time 12:15 PM  
Rec Amt \$7.00

PHYLLIS M. GERLACH, RECORDER  
JACKSON COUNTY IOWA

Prepared by Wm. Burger Land Surveyors

510 3rd Street West Court, Worthington, Iowa

Phone 563 - 855 2028

## UNITED STATES PUBLIC LAND SURVEY CORNER CERTIFICATE

Land Survey Monuments situated in Section 10, Township 85N, Range 2E, of the Fifth Principal Meridian, Jackson County, Iowa. Previously recorded in N/A in the Office of the County Recorder

Monument Description and Remarks: (No Corner Certificates found at the County Recorders Office)

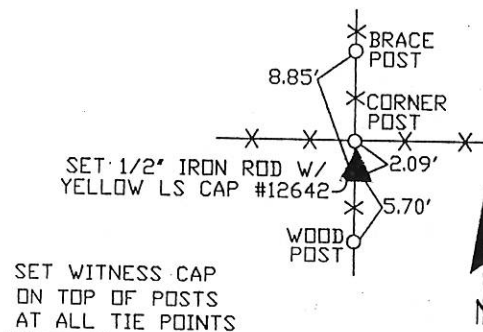
SW CORNER SE1/4 SE1/4 - SET 1/2" IRON ROD W/YELLOW LS CAP #12642 - USED EXISTING FENCELINES AND SET AT THE CORNER POST

NW CORNER SE1/4 SE1/4 - SET 1/2" IRON ROD W/YELLOW LS CAP #12642 - RUN STRAIGHT LINES FROM OPPOSITE 1/4 1/4 CORNERS AND SET AT POINT OF INTERSECTION

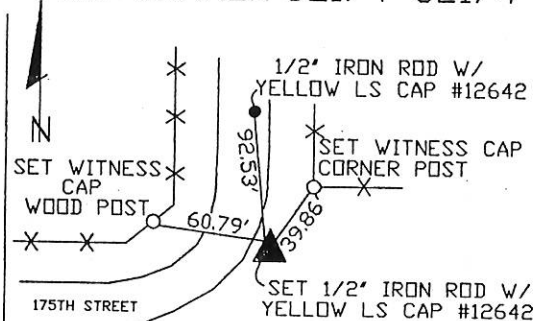
NW CORNER NE1/4 SE1/4 - SET 1/2" IRON ROD W/YELLOW LS CAP #12642 - SET MIDWAY BETWEEN THE CENTER OF SECTION AND THE EAST 1/4 CORNER AND ON LINE WITH FENCE TO THE WEST

### PLAN VIEW

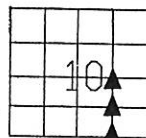
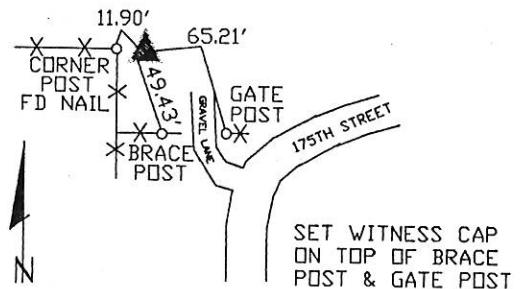
SW CORNER SE1/4 SE1/4



NW CORNER SE1/4 SE1/4



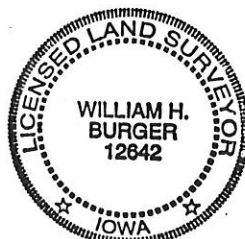
NW CORNER NE1/4 SE1/4



SEC. 10 TWP. 85N RANGE 2E

### CORNERS TO BE INDEXED

SW CORNER SE1/4 SE1/4	10	85N	2E
NW CORNER SE1/4 SE1/4	10	85N	2E
NW CORNER NE1/4 SE1/4	10	85N	2E



I hereby certify that this land surveying document was prepared and related survey work was performed by me or under my direct personal supervision and that I am a duly licensed Land Surveyor under the laws of the State of Iowa.

*William H. Burger* 11/27/04  
William H. Burger Date

License number 12642

My license renewal date is December 31, 2004

Pages or Sheets covered by this seal: Sheet 1 of 1