



Document 14-1097

Book 3 Page 127 Type 15 001 Pages 1

Date 4/07/2014 Time 9:00 AM

Rec Amt \$7.00

ARLENE SCHAUF, RECORDER/REGISTRAR  
JACKSON COUNTY IOWA

Prepared by Wm. Burger Land Surveyor 510 3rd Street West Court, Worthington, Iowa Phone 563 - 855 2028

## UNITED STATES PUBLIC LAND SURVEY CORNER CERTIFICATE

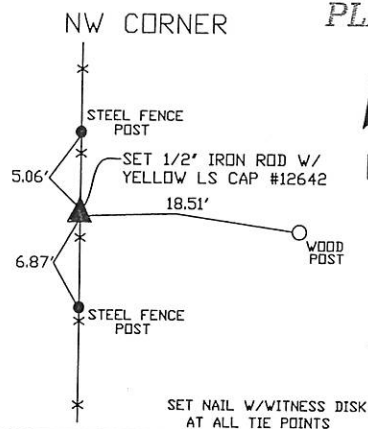
Land Survey Monuments situated in Section 6, Township 84N, Range 4E, of the Fifth Principal Meridian, Jackson County, Iowa. Previously recorded in N/A in the Office of the County Recorder

Monument Description and Remarks: (No Corner Certificates found at the County Recorders Office)

NW CORNER- SET 1/2" IRON ROD W/YELLOW LS CAP #12642 - USED EXISTING FENCELINE EVIDENCE  
AND SET CORNER AT FENCELINE INTERSECTION. PROBED AREA FOR STONE AND DID NOT FIND

W1/4 CORNER- SET 1/2" IRON ROD W/YELLOW LS CAP #12642 - USED EXISTING FENCELINE EVIDENCE  
AND SET CORNER AT THE CORNER POST. PROBED AREA FOR STONE AND DID NOT FIND

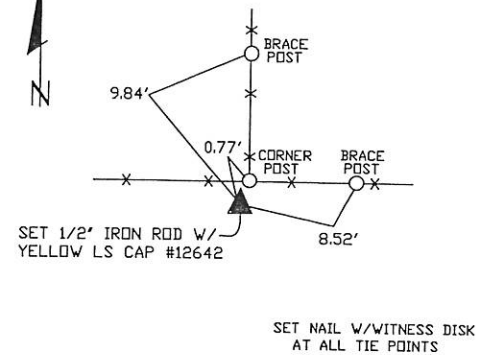
CENTER OF SECTION - SET 1/2" IRON ROD W/YELLOW LS CAP #12642 - USED INFORMATION FROM PLAT  
FOUND IN RECORDERS OFFICE IN OLD SURVEY RECORD BOOK ON PAGE 55 AND PROPORTIONED CORNER IN FROM THE  
N1/4 CORNER AND THE S1/4 CORNER. PROBED AREA FOR STONE AND DID NOT FIND



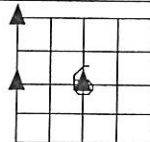
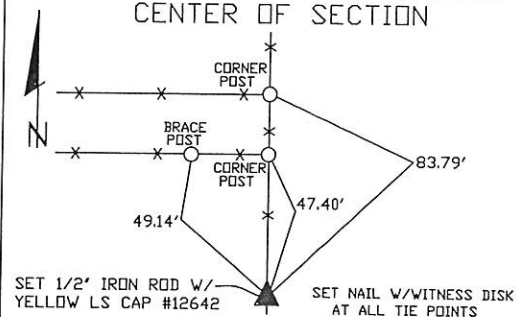
## PLAN VIEW



## W1/4 CORNER



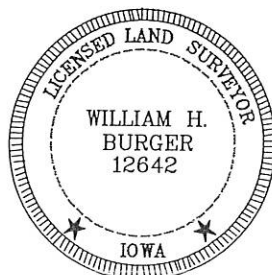
## CENTER OF SECTION



SEC. 6 TWP. 84N RANGE 4E

## CORNERS TO BE INDEXED

NW CORNER	6	84N	4E
W1/4 CORNER	6	84N	4E
CENTER OF SECTION	6	84N	4E



I hereby certify that this land surveying document was prepared and related survey work was performed by me or under my direct personal supervision and that I am a duly licensed Land Surveyor under the laws of the State of Iowa.

*William H. Burger* 3/12/14  
William H. Burger Date

License number 12642

My license renewal date is December 31, 2014

Pages or Sheets covered by this seal: Sheet 1 of 1