

UNITED STATES PUBLIC LAND SURVEY CORNER CERTIFICATE

OF

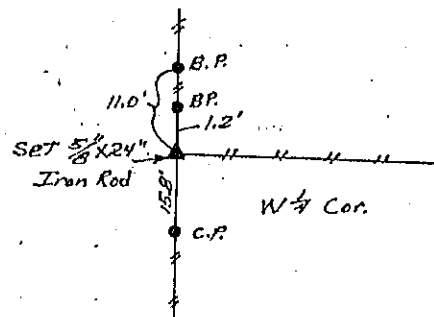
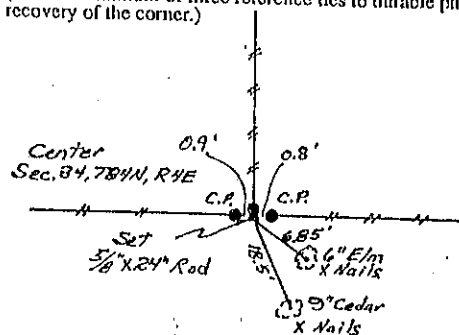
Land Survey Monuments situated in Section 34, Township 84N, Range 4E, of the Fifth Principal Meridian, Jackson County, Iowa.
 Previously recorded in not recorded in County Recorder's Office.
 (book, page, document number, etc.)

(Show reason for preparing this certificate, the evidence and detailed procedures used in establishing the corner positions and monumentation found or placed.)

Monument Description and Remarks: Center of Section: Set 5/8"x24" iron rod in east-west fence line in line with a fence running north at this point.
W 1/4 corner: Set a 5/8"x24" iron rod in a north-south fence line in line with a east-west fence line.

PLAN - VIEW

(Show a minimum of three reference ties to durable physical objects, relevant monuments and physical conditions that will enable recovery of the corner.)



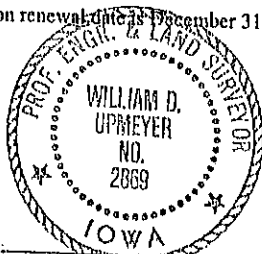
I hereby certify that the survey work was completed and this land surveying document was prepared by me or under my direct personal supervision and that I am a duly registered land surveyor under the laws of the state of Iowa

Signature: William D. Upmeyer
 Name typed or printed: William D. Upmeyer

Date: 11-18-94 Reg. No. 2869

My registration renewal date is December 31, 1995

SEAL



Corners	Section	Twp	Range
Center	34	84N	4E
W 1/4	34	84N	4E

FILE NO. 001254
 BOOK 1 PAGE 222

1994 NOV 18 AM 11:35

SHIRLEY KITCHEN
 JACKSON COUNTY, IOWA
 RECORDER

See 6.

PREPARED BY:
WILLIAM HOLT, PLS
NORWEST SURVEYING SERVICES, INC.
301 E LINCOLNWAY
MORRISON, IL 61270

FILE NO. 04-4671
BOOK 2 PAGE 313
04 OCT 18 AM 8:36
PHYLLIS M. GERLACH
JACKSON COUNTY, IOWA
RECORDER
Fee 7.00

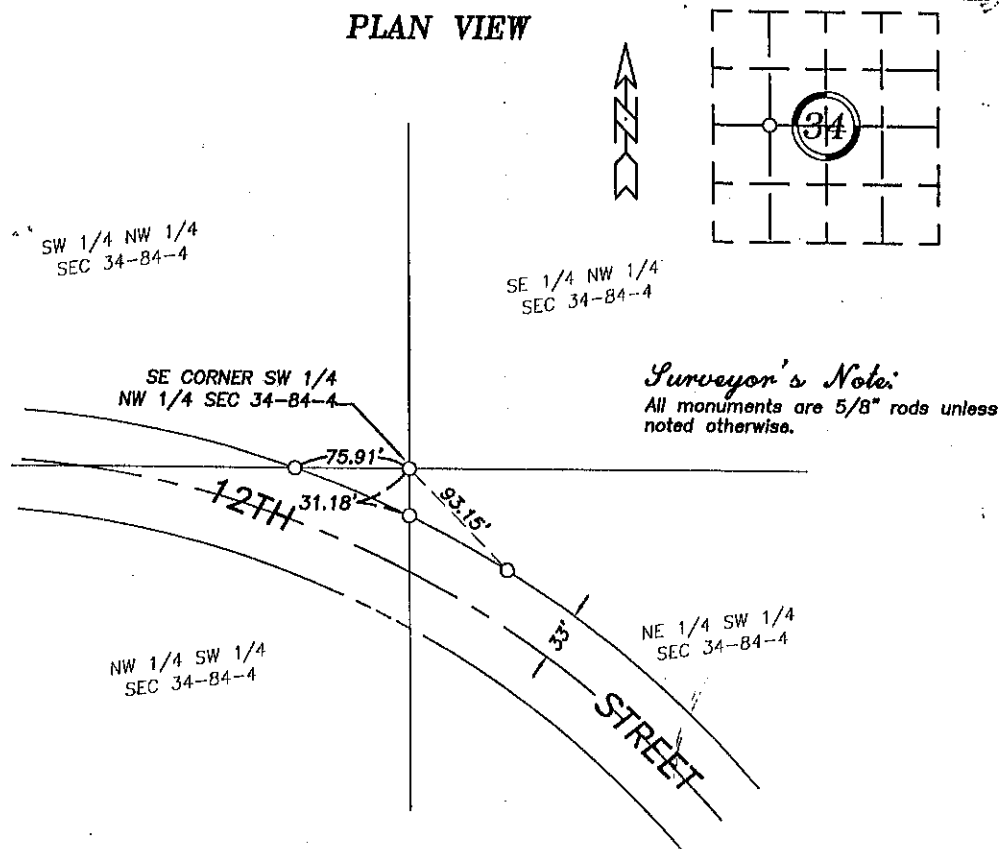
UNITED STATES PUBLIC LAND SURVEY CORNER CERTIFICATE OF

Land Survey Monuments in Section 34 in Township 84 North (T84N), Range 4 East (R4E)
of the Fifth Principal Meridian (5th PM), Jackson County, Iowa. (Not Previously Recorded)

A Monument was placed at the Southeast corner of the Southwest Quarter (SW 1/4) of the Northwest Quarter (NW 1/4), of Section 34 per the description below

The corner location was established at a prorata location using existing monuments, fences and occupation lines within this and adjoining Sections.

PLAN VIEW



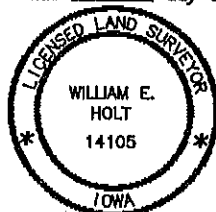
Project No. 2004264

I hereby certify that the survey work was completed and this land surveying document was prepared by me or under my direct personal supervision and that I am a duly registered land surveyor under the laws of the State of Iowa.

Signature: William E. Holt
William E. Holt
Iowa Registration No. 14105

My Registration Renews on December 31, 2004

Dated this 13th day of October, 2004 C.E.



Corners to be Indexed

Corner	Section	Township	Range
SE Corner SW 1/4 NW 1/4	34	84N	4E

Book 2 Page 313



Document 06-543

Book 2 Page 417 Type 06 023 Pages 1

Date 2/10/2006 Time 2:38 PM

Rec Amt \$7.00

PREPARED BY:
WILLIAM HOLT, PLS
NORWEST SURVEYING SERVICES, INC.
301 E LINCOLNWAY
MORRISON, IL 61270

PHYLLIS M. GERLACH, RECORDER
JACKSON COUNTY IOWA

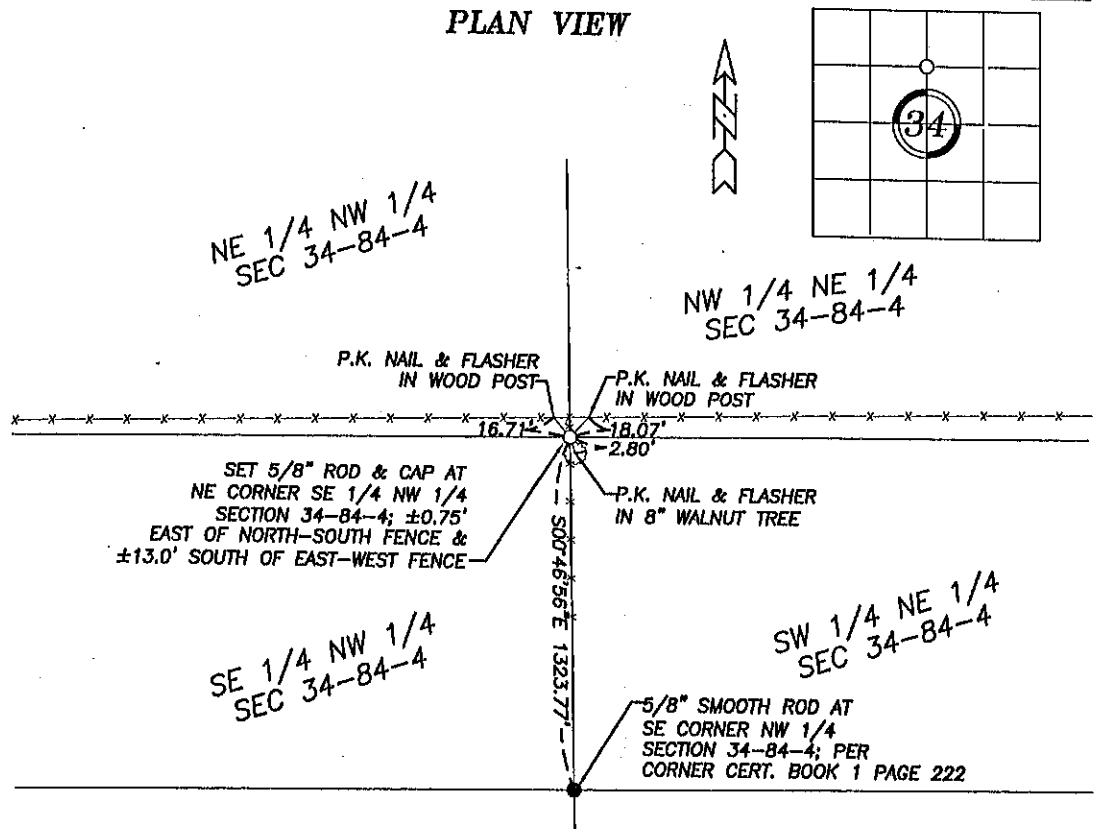
UNITED STATES PUBLIC LAND SURVEY CORNER CERTIFICATE OF

Land Survey Monuments in Section 34 in Township 84 North (T84N), Range 4 East (R4E)
of the Fifth Principal Meridian (5th PM), Jackson County, Iowa. (Not Previously Recorded)

A Monument was placed at the Northeast corner of the Southeast Quarter (SE 1/4) of the Northwest Quarter (NW 1/4), of Section 34 per the description below.

The corner location was established at a prorata location using existing monuments, fences and occupation lines within this and adjoining Sections.

PLAN VIEW



Project No. 2006017

I hereby certify that the survey work was completed and this land surveying document was prepared by me or under my direct personal supervision and that I am a duly registered land surveyor under the laws of the State of Iowa.

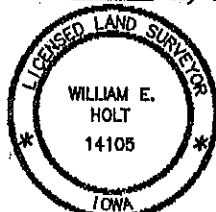
Signature: William E. Holt

William E. Holt

Iowa Registration No. 14105

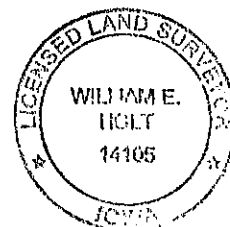
My Registration Renews on December 31, 2006

Dated this 25th day of January, 2006 C.E.



Corners to be Indexed

Corner	Section	Township	Range
NE Corner			
SE 1/4 NW 1/4	34	84N	4E





Document 15-4313

Book 2015 Page 4313 Type 15 001 Pages 1

Date 12/28/2015 Time 3:19 PM

Rec Amt \$7.00

PREPARED BY:
WILLIAM HOLT, PLS
NORWEST SURVEYING SERVICES, INC.
301 E LINCOLNWAY
MORRISON, IL 61270

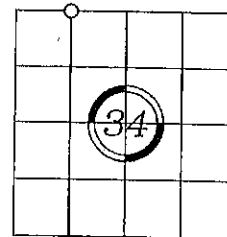
ARLENE SCHAUF, RECORDER/REGISTRAR
JACKSON COUNTY IOWA

UNITED STATES PUBLIC LAND SURVEY CORNER CERTIFICATE OF

Land Survey Monuments in Section 34 in Township 84 North (T84N), Range 4 East (R4E)
of the Fifth Principal Meridian (5th PM), Jackson County, Iowa. (Not Previously Recorded)

The corner location was established at a prorata location using existing monuments, fences and
occupation lines within this and adjoining Sections.

PLAN VIEW



SET CAPPED 5/8" ROD
NE CORNER NW 1/4 NW 1/4
SECTION 34-84-4

6" TREE

8" TREE

ALL TIES TO NAILS & FLASHERS

Project No. 2004264

I hereby certify that the survey work was completed
and this land surveying document was prepared by
me or under my direct personal supervision and
that I am a duly registered land surveyor under the
laws of the State of Iowa.

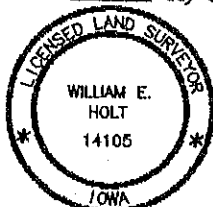
Signature: William E. Holt

William E. Holt

Iowa Registration No. 14105

My Registration Renews on December 31, 2016

Dated this 17th day of November, 2015 C.E.



Corners to be Indexed

Corner	Section	Township	Range
NE Corner			
NW 1/4 NW 1/4	34	84N	4E
SE Corner			
SW 1/4 SW 1/4	27	84N	4E



Document 23-67

Type 15 001

Pages 1

Date 1/09/2023 Time 12:07 PM

Rec Amt \$12.00*

PREPARED BY:
WILLIAM HOLT, PLS
NORWEST SURVEYING SERVICES, INC.
301 E LINCOLNWAY
MORRISON, IL 61270

ARLENE SCHAUF, RECORDER/REGISTRAR
JACKSON COUNTY IOWA

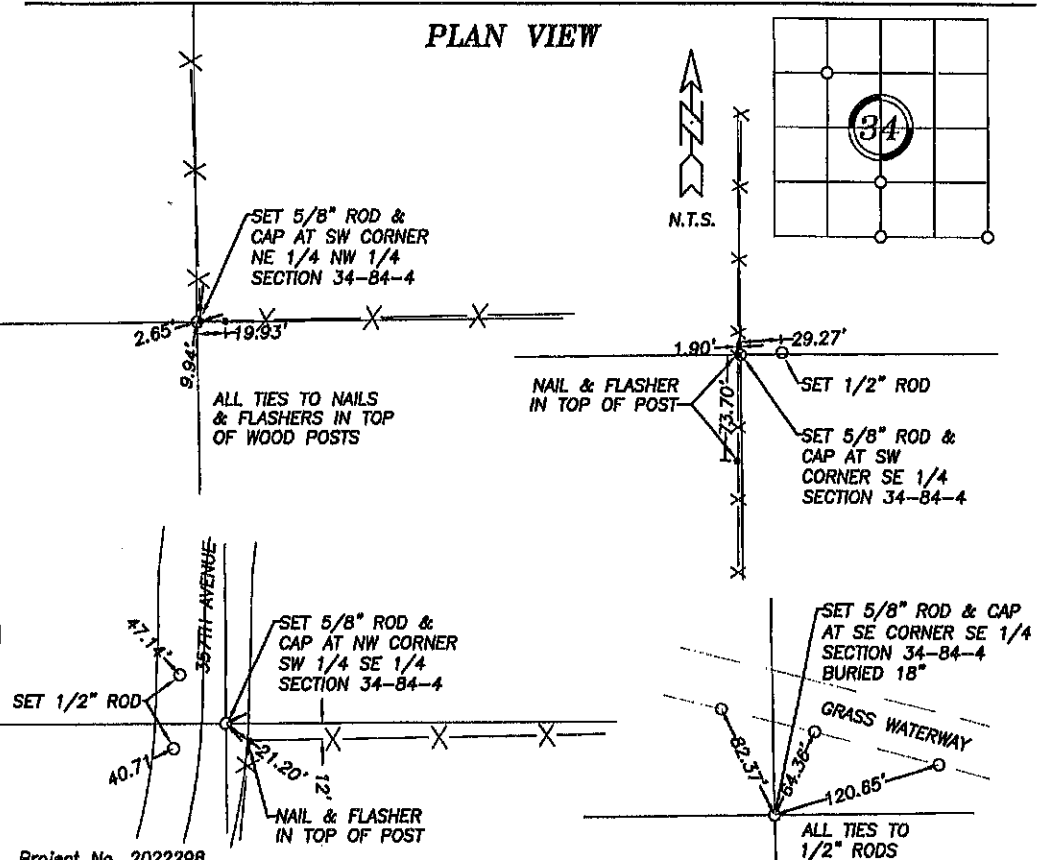
UNITED STATES PUBLIC LAND SURVEY CORNER CERTIFICATE OF

Land Survey Monuments in Section 34 in Township 84 North (T84N), Range 4 East (R4E)
of the Fifth Principal Meridian (5th PM), Jackson County, Iowa. (Not Previously Recorded)

Monuments were placed at corners in Section 34 per the description below.

The corner locations were established at a prorata location using existing monuments, fences and
occupation lines within this and adjoining Sections.

PLAN VIEW



Project No. 2022298

I hereby certify that the survey work was completed
and this land surveying document was prepared by
me or under my direct personal supervision and
that I am a duly registered land surveyor under the
laws of the State of Iowa.

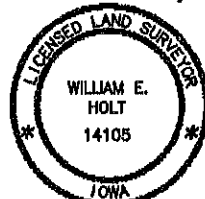
Signature:

William E. Holt

Iowa Registration No. 14105

My Registration Expires on December 31, 2024

Dated this 10th day of January 2023 C.E.



Corners to be Indexed

Corner	Section	Township	Range
SW CORNER			
NE 1/4 NW 1/4	34	84N	4E
NW CORNER			
SW 1/4 SE 1/4	34	84N	4E
SW CORNER			
SE 1/4	34	84N	4E
SE CORNER			
SE 1/4	34	84N	4E