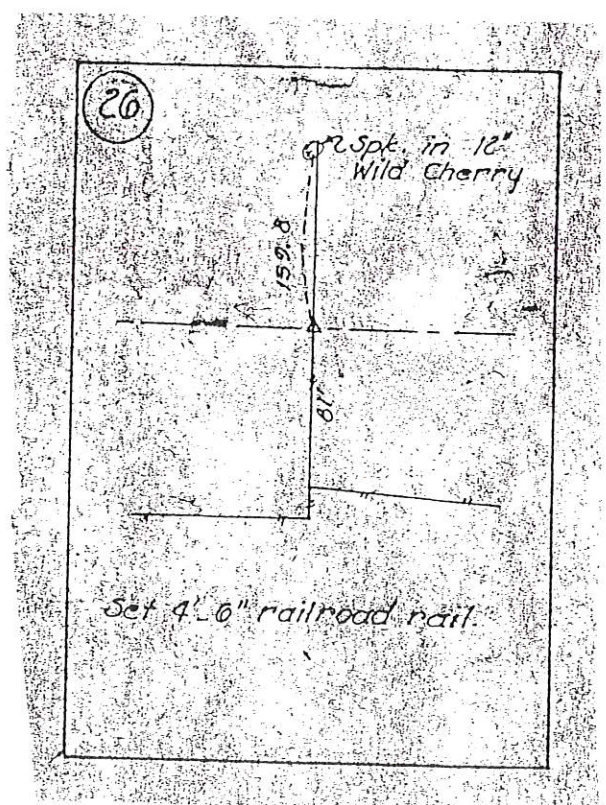
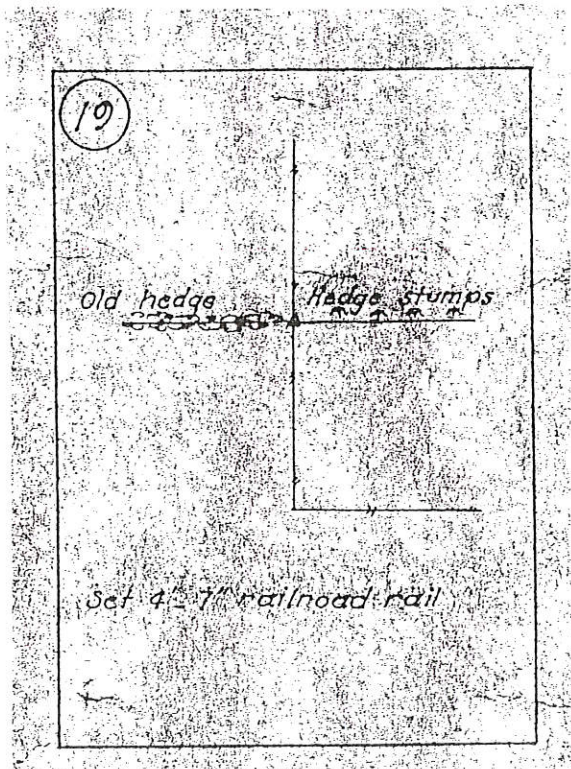
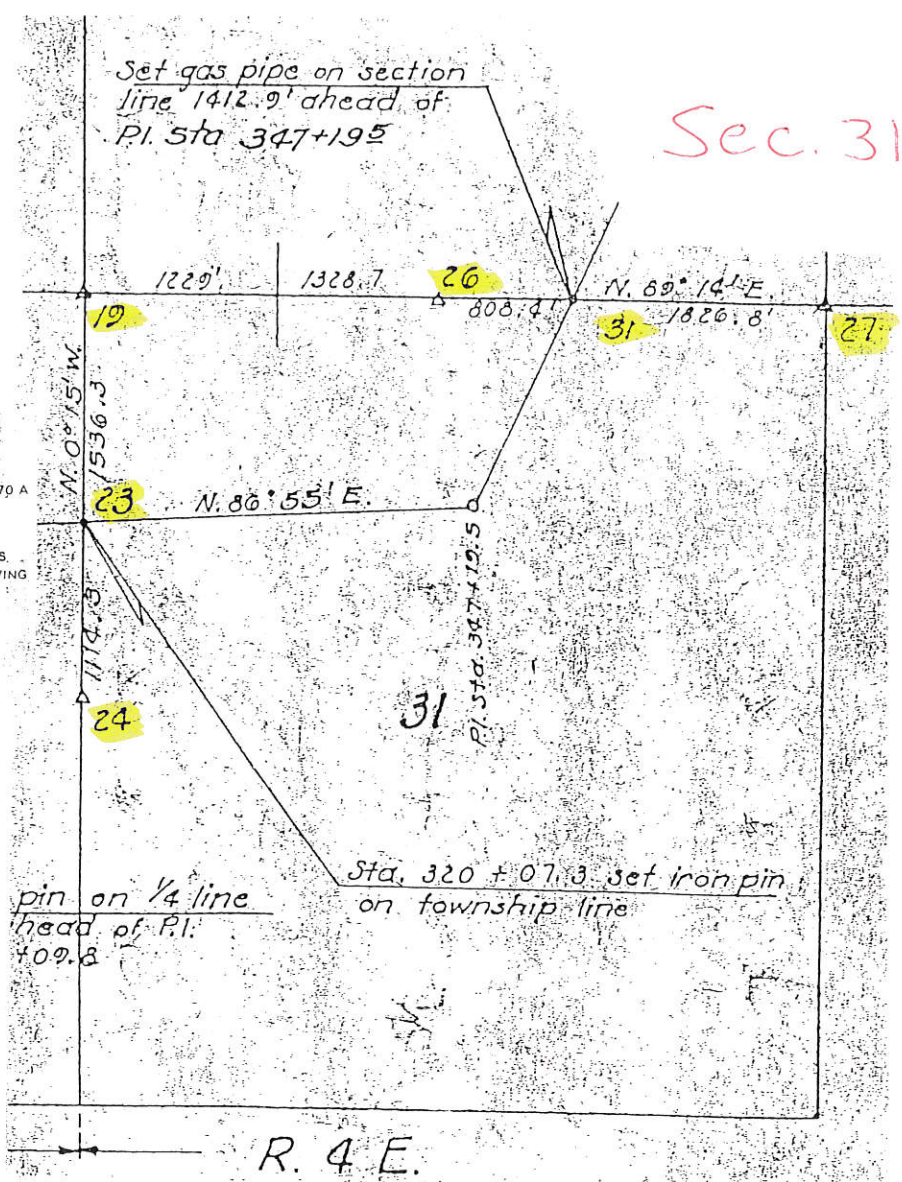
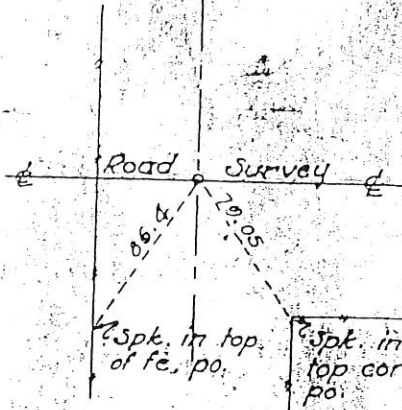


LAND CORNER SURVEY
 JACKSON CO T.84 N. R.3E. AND R.4E.
 FOR RIGHT OF WAY DESCRIPTIONS ON PRIMARY NO. 64 PROJ. FA 470 A
 MADE FOR
 THE IOWA STATE HIGHWAY COMMISSION
 BY G. R. ELLIOTT CHIEF OF PARTY DIRECTED BY H. S. LEIGHT RLS.
 BEARINGS ARE FROM THE TRUE MERIDIAN DETERMINED BY OBSERVING
 POLARIS AT STA. 2 + 32 STA. 241 + 42 AND STA. 417 + 20
 FIELD NOTES FOR THIS SURVEY ARE FILED WITH THE
 IOWA HIGHWAY COMMISSION AMES, IOWA
 AUGUST 13 TO OCTOBER 8, 1937

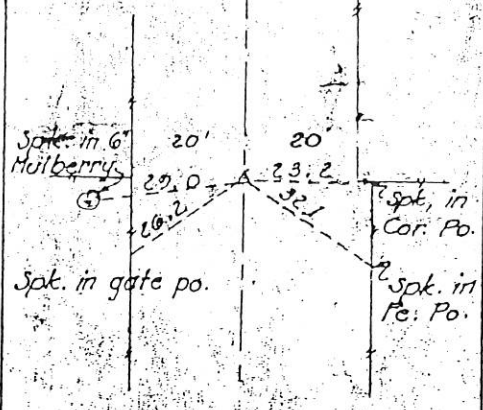


23



P.O.T. Sta. 320 + 07.3
Set iron pin on east line
of Section 36.

24



Set 4' 6" railroad rail.

27



Set 4' 6" railroad rail

31

Searched for, but not
found and not set.

PREPARED BY: EGGER ENGINEERING AND LAND SURVEYING, P.C.
2395 TECH DRIVE SUITE 2 BETTENDORF, IOWA 52722 563-332-6330

UNITED STATES PUBLIC LAND SURVEY CORNER CERTIFICATE
OF

Land Survey Monuments situated in Section 31, Township 84N, Range 4E, of the Fifth Principal Meridian, JACKSON County, Iowa. Previously recorded in _____
(book, page, document number, etc.)

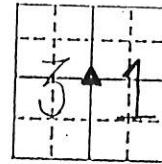
(Show reason for preparing this certificate, the evidence and detailed procedures used in establishing the corner positions and monumentation found or placed.)

Monument Description and Remarks: Monument Set 5/8" Iron Rod at the
Center of Section 31-84N-4E. USED EXISTING STRAIGHT
PORTIONS OF E-W & N-S FENCES TO PLACE THIS CORNER

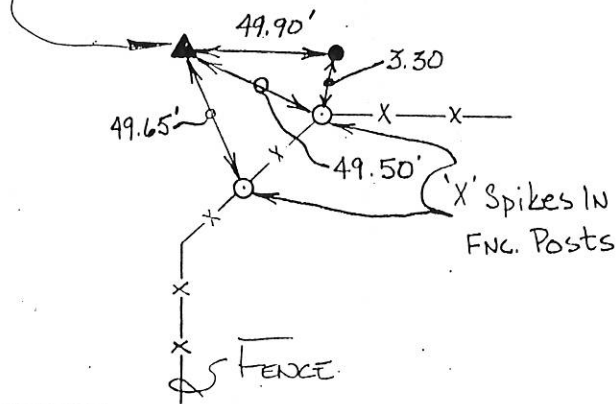
PLAN - VIEW

(Show a minimum of three reference ties to durable physical object, relevant monuments and physical conditions that will enable recovery of the corner.)

CENTER SECTION



Set 5/8" Iron Rod
With Cap # 7983

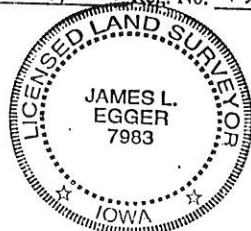


I hereby certify that the survey work was completed and this certificate was prepared by me or under my direct supervision and that I am a duly registered land surveyor under the laws of the state of Iowa.

Signature: James L. Egger
James L. Egger L.S.

Date: JUNE 7, 2004 Reg. No. 7983

SEAL



Corners

List Corners to be Indexed

Center

Section

Twp

Range

31

84N

4E

PREPARED BY: EGGER ENGINEERING AND LAND SURVEYING, P.C.
2395 TECH DRIVE SUITE 2 BETTENDORF, IOWA 52722 563-332-6330

FILE NO. 04-2869
PAGE 292

JUN 22 AM 9:07

PHYLLIS M. GERLACH
JACKSON COUNTY, IOWA
RECORDER

UNITED STATES PUBLIC LAND SURVEY CORNER CERTIFICATE
OF

Land Survey Monuments situated in Section 31, Township 84N, Range 4E, of the Fifth Principal Meridian, JACKSON County, Iowa. Previously recorded in E 1/4 COR BK2 Pg 176
(book, page, document number, etc.)

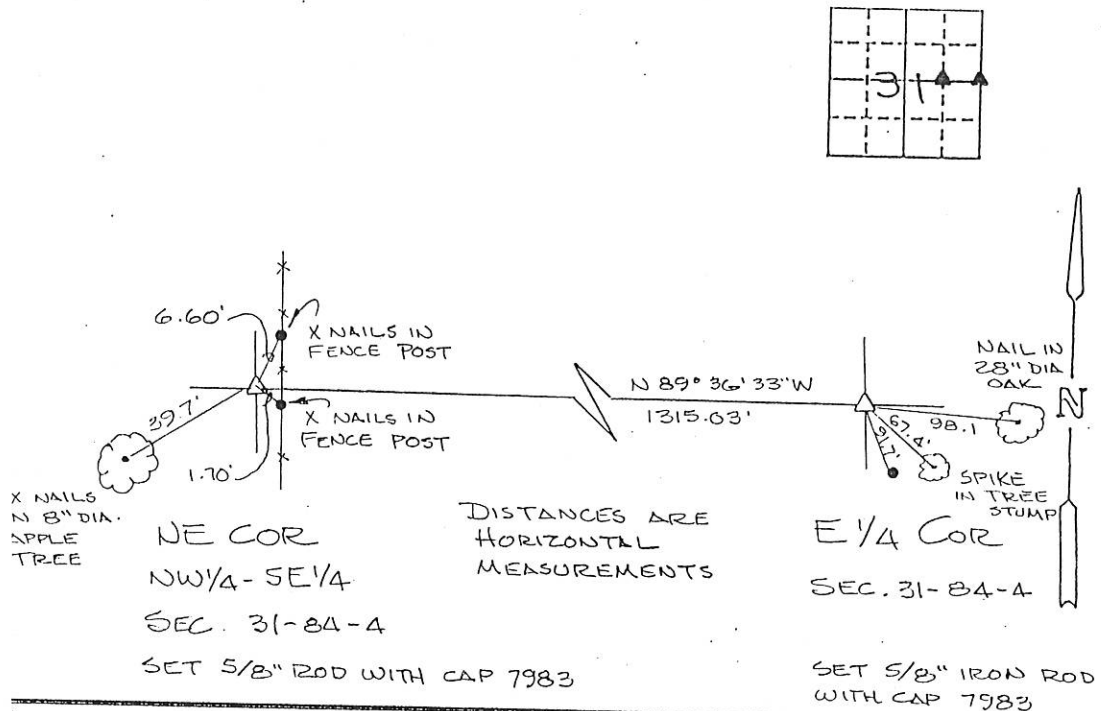
(Show reason for preparing this certificate, the evidence and detailed procedures used in establishing the corner positions and monumentation found or placed.)

Monument Description and Remarks: E 1/4 COR WAS NEVER SET SINCE IT WAS IN A TILLABLE TRACT. IT WAS SET USING TIES NOTED IN BK2, Pg 176

NE COR - NW 1/4 - SE 1/4 WAS SET USING AN EXISTING N-S FENCE AND THE E 1/4 COR ALONG WITH AN EXISTING E-W FENCE.

PLAN - VIEW

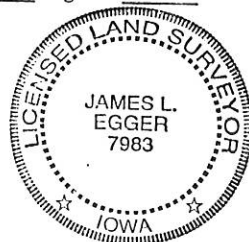
(Show a minimum of three reference ties to durable physical object, relevant monuments and physical conditions that will enable recovery of the corner.)



hereby certify that the survey work was completed and this certificate was prepared by me or under my direct supervision and that I am a duly registered land surveyor under the laws of the state of Iowa.

Signature: James L. Egger
James L. Egger L.S.

Date: 12-6-03 Reg. No. 7983



EAL

Corners	Section	Twp	Range
E 1/4	31	84N	4E
NE-NW 1/4 - SE 1/4	31	84N	4E