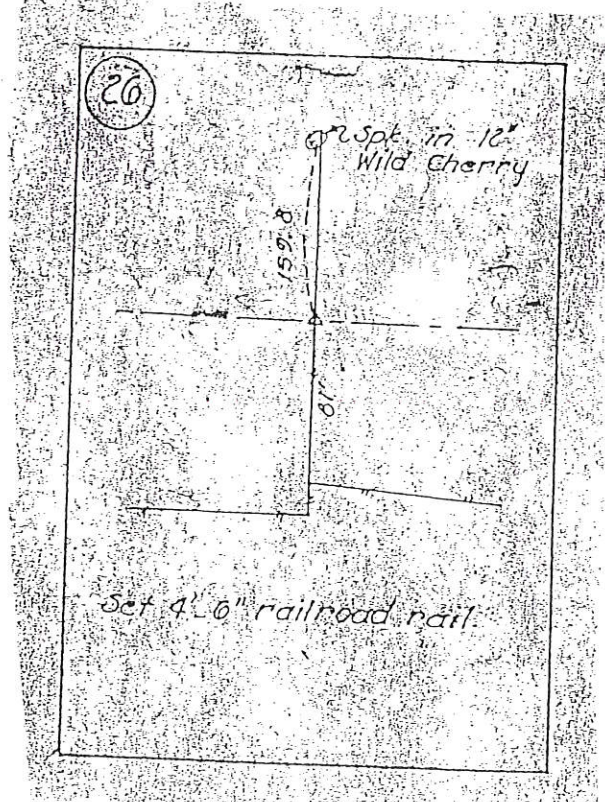
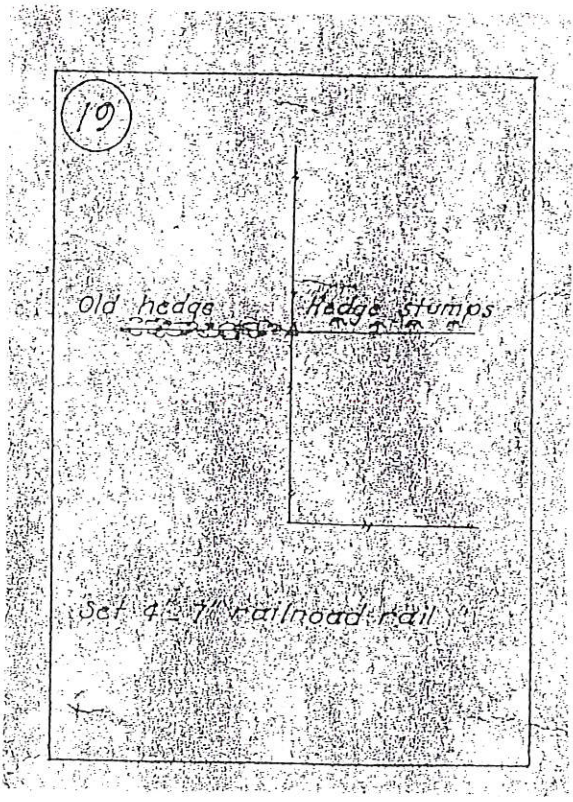
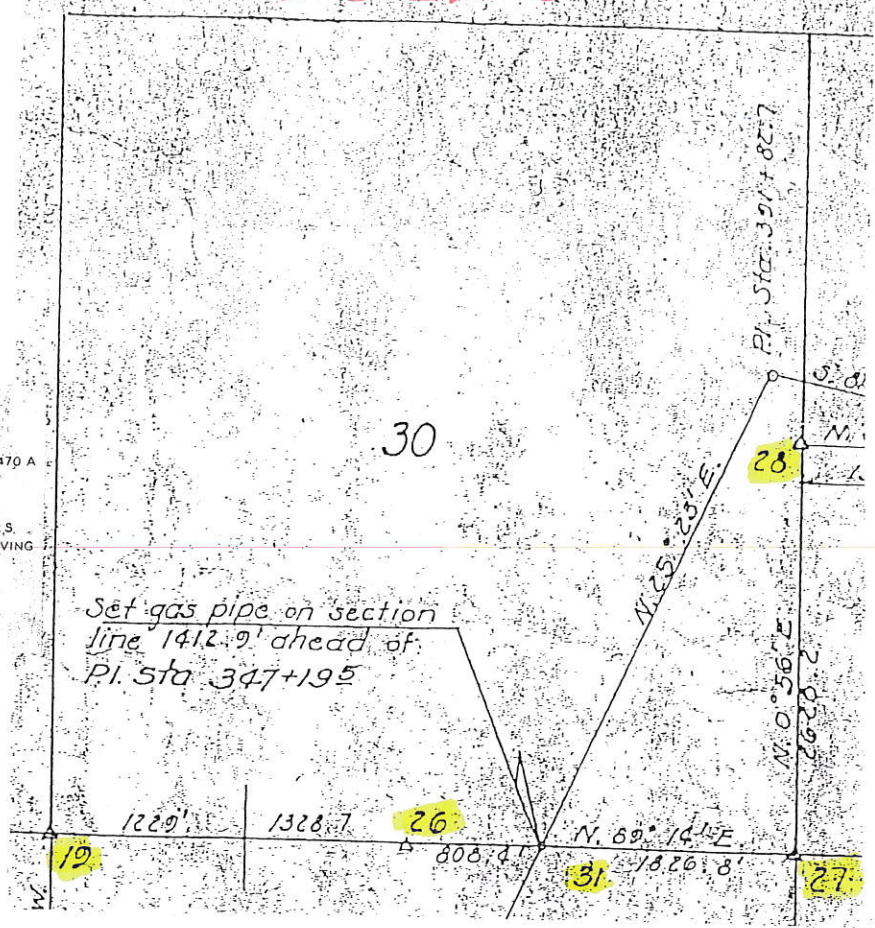
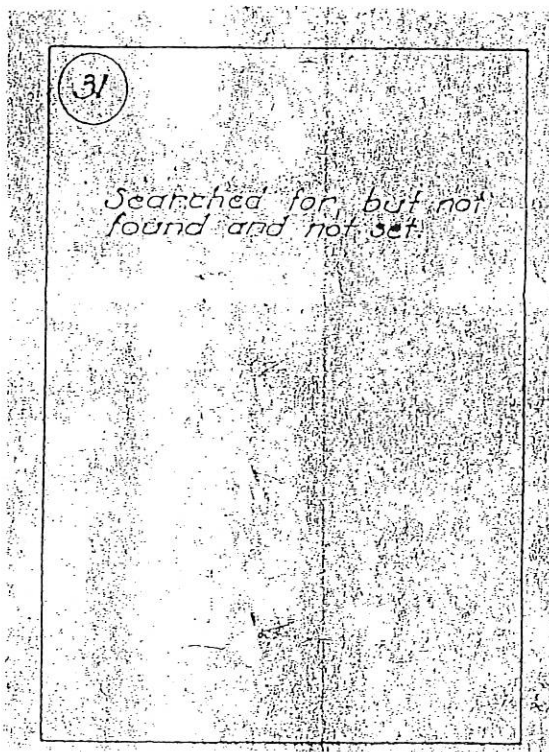
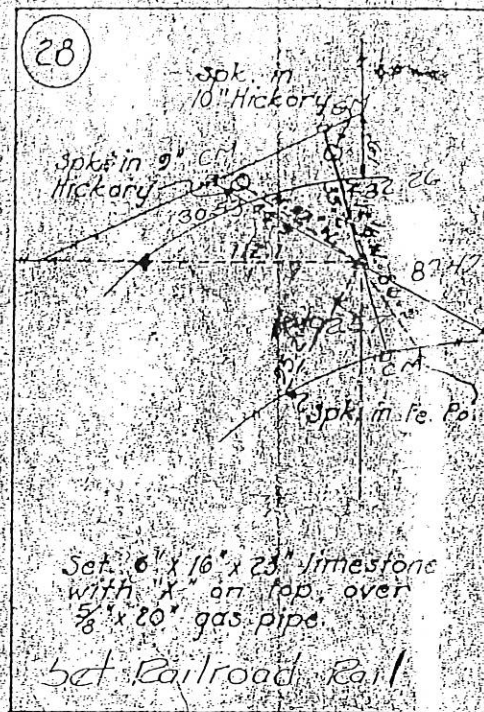
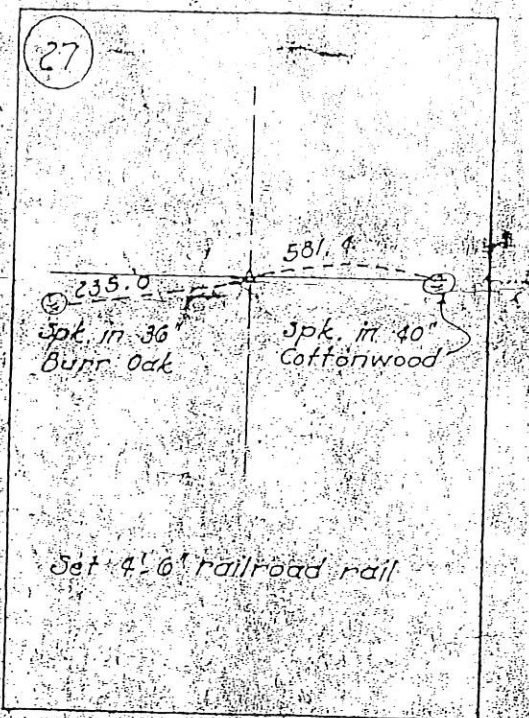


Sec. 30

LAND CORNER SURVEY
 JACKSON CO T84 N. R. 3E. AND R4E.
 FOR RIGHT OF WAY DESCRIPTIONS ON PRIMARY NO. 64 PROJ. EA. 470 A
 MADE FOR
 THE IOWA STATE HIGHWAY COMMISSION
 BY G. R. ELLIOTT CHIEF OF PARTY DIRECTED BY H. S. LEIGHT RLS.
 BEARINGS ARE FROM THE TRUE MERIDIAN DETERMINED BY OBSERVING
 POLARIS AT STA. 2+32 STA. 241+42 AND STA. 417+20.
 FIELD NOTES FOR THIS SURVEY ARE FILED WITH THE
 IOWA HIGHWAY COMMISSION AMES, IOWA
 AUGUST 13 TO OCTOBER 8, 1937





UNITED STATES PUBLIC LAND SURVEY CORNER CERTIFICATE

OF

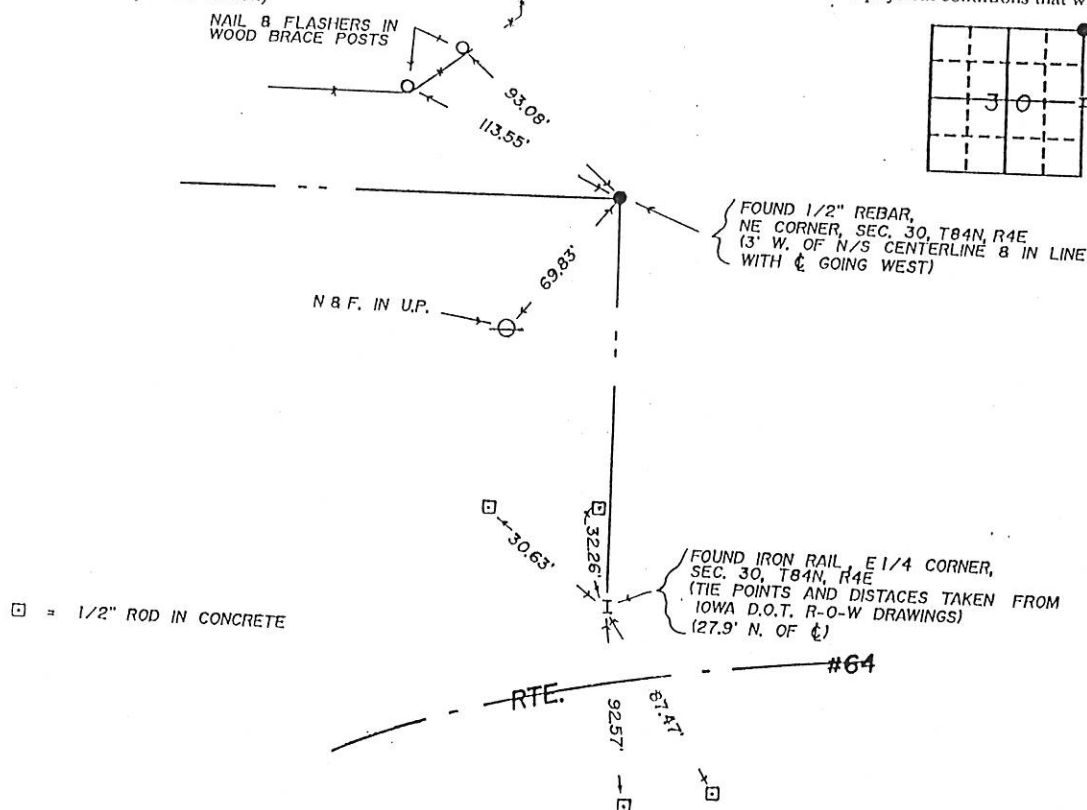
Land Survey Monuments situated in Section 30, Township 84 N., Range 4 E., of the Fifth Principal Meridian, JACKSON County, Iowa.
 Previously recorded in _____ in County Recorder's Office.

(Show reason for preparing this certificate, the evidence and detailed procedures used in establishing the corner positions and monumentation found or placed.)

Monument Description and Remarks: SECTION MONUMENTS FOUND IN PLACE

PLAN - VIEW

(Show a minimum of three reference ties to durable physical objects, relevant monuments and physical conditions that will enable recovery of the corner.)



□ = 1/2" ROD IN CONCRETE

I hereby certify that the survey work was completed and this land surveying document was prepared by me or under my direct personal supervision and that I am a duly registered land surveyor under the laws of the state of Iowa

Signature: LaVerne F. Vander Schaaf
 Name typed or printed: LAVERNE F. VANDER SCHAAF

Date: 3/28/95 Reg. No. 11084
 My registration renewal date is December 31, 1996

SEAL



Job #3757

Corners	Section	Twp	Range
E 1/4	30	84 N	4 E
NE	30	84 N	4 E

FILE NO 001916
 BOOK 233 PAGE 233

1995 FEB 28 PM 12:06

SHIRLY RITENOUR
 JACKSON COUNTY, IOWA
 RECORDER

Sub 00

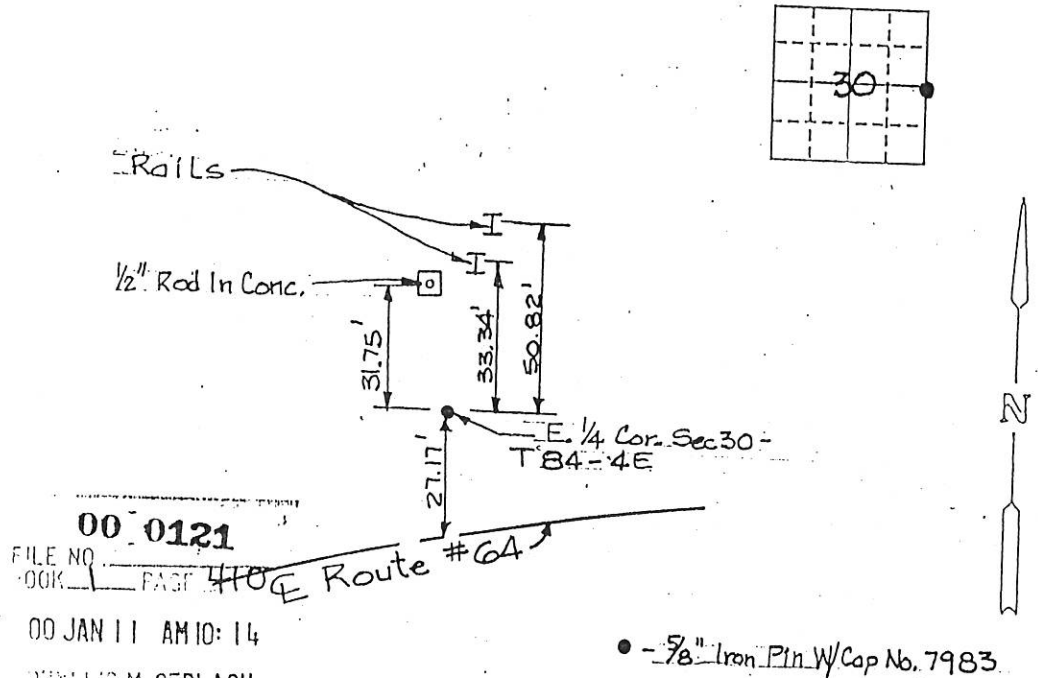
Land Survey Monuments situated in Section 30, Township 84 N., Range 4 E., of the Fifth Principal Meridian, Jackson County, Iowa.
 Previously recorded in Book 1, Page 233, Doc. # 001916, Feb. 28, 1995 in County Recorder's Office.
 (book, page, document number, etc.)

(Show reason for preparing this certificate, the evidence and detailed procedures used in establishing the corner positions and monumentation found or placed.)

Monument Description and Remarks: Reset the East 1/4 corner of section 30 by using the description from Laverne F. Vanderschaaf's Plat of Survey recorded in Book 1-H, Page 145 on March 14, 1995, in the Jackson County Courthouse.

PLAN - VIEW

(Show a minimum of three reference ties to durable physical objects, relevant monuments and physical conditions that will enable recovery of the corner.)



FILE NO. 00 0121
 BOOK 1 PAGE 410 E Route #64
 00 JAN 11 AM 10:14
 PHYLLIS M. GERLACH
 JACKSON COUNTY, IOWA
 RECORDER *Feb. 00*

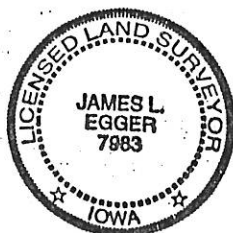
• - 5/8" Iron Pin W/ Cap No. 7983

Note: All Corner Tie Dimensions Are Horizontal Distances

I hereby certify that the survey work was completed and this certificate was prepared by me or under my direct personal supervision and that I am a duly registered land surveyor under the laws of the state of Iowa.

Signature: James L. Egger
 Name typed or printed:

Date: Jan. 10, 2000 Reg. No. 7983



SEAL

Corners	List Corners to be Indexed	Section	Twp	Range
E 1/4	30	84N.	4E.	
W 1/4	29	84N.	4E.	

00 JUL -6 AM 11:28

PREPARED BY: EGGER ENGINEERING AND LAND SURVEYING, P.C.
2395 TECH DRIVE SUITE 8 BETTENDORF, IOWA 52722PHYLLIS M. GERLACH
JACKSON COUNTY, IOWA
RECORDERUNITED STATES PUBLIC LAND SURVEY CORNER CERTIFICATE
OF

Fee 6.00

Land Survey Monuments situated in Section 30, Township 84N, Range 4E, of the Fifth Principal Meridian, Jackson County, Iowa. Previously recorded in N/A in County Recorder's Office.

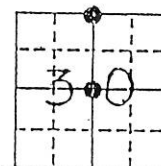
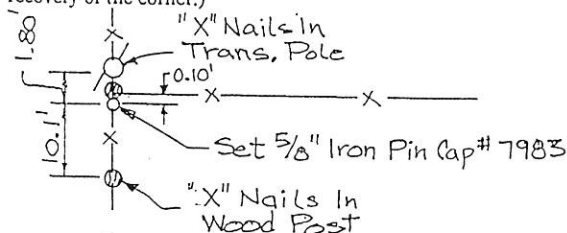
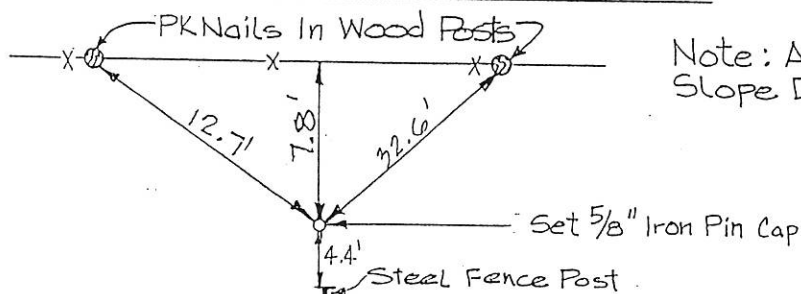
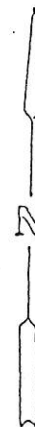
(book, page, document number, etc.)

(Show reason for preparing this certificate, the evidence and detailed procedures used in establishing the corner positions and monumentation found or placed.)

Monument Description and Remarks: The North Quarter Corner was set by using a corner post at the intersection of 3 fences. The center of Section 30 was set by a calculated fence line intersection of the North/South fence line with the East/West fence line.

PLAN - VIEW

(Show a minimum of three reference ties to durable physical object, relevant monuments and physical conditions that will enable recovery of the corner.)

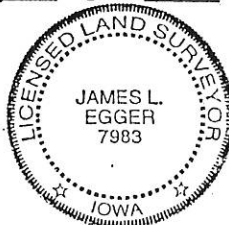
North Quarter Cor. Sec. 30-T.84N.-R.4E.Note: All Ties Are
Slope DistancesCenter Of Sec. 30-T.84N.-R.4E.

I hereby certify that the survey work was completed and this certificate was prepared by me or under my direct supervision and that I am a duly registered land surveyor under the laws of the state of Iowa.

Signature: James L. Egger

James L. Egger L.S.

RENEWAL IS 12/31/2001

Date: July 3, 2000Reg. No. 7983

SEAL

Corners	List Corners to be Indexed		
	Section	Twp	Range
N. 1/4	30	84N.	4E.
Center	30	84N.	4E.



Document 06-4847

Book 2 Page 505 Type 15 001 Pages 1

Date 12/22/2006 Time 1:30 PM

Rec Amt \$7.00

PREPARED BY:
WILLIAM HOLT, PLS
NORWEST SURVEYING SERVICES, INC.
301 E LINCOLNWAY
MORRISON, IL 61270

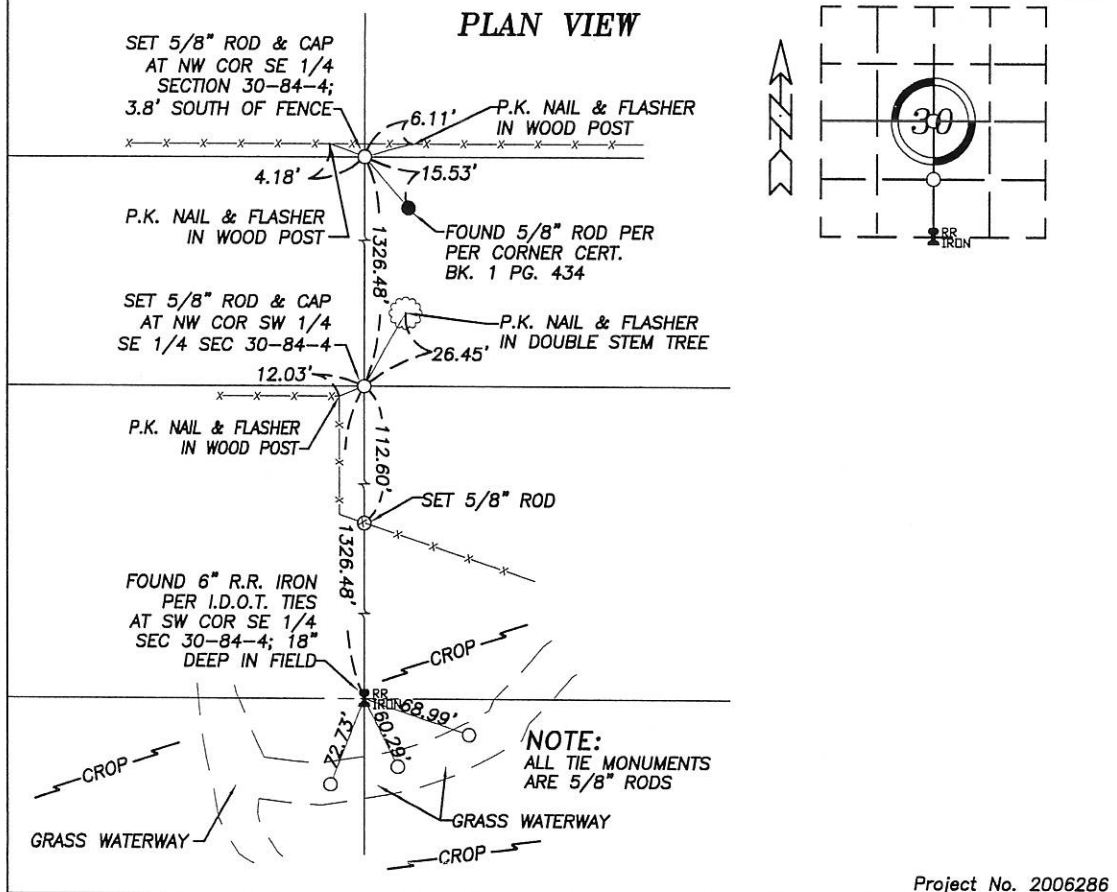
ARLENE SCHAUF, RECORDER
JACKSON COUNTY IOWA

UNITED STATES PUBLIC LAND SURVEY CORNER CERTIFICATE OF

Land Survey Monuments in Section 30 in Township 84 North (T84N), Range 4 East (R4E)
of the Fifth Principal Meridian (5th PM), Jackson County, Iowa. (Not Previously Recorded)

Monuments were placed at the Northwest corner of the Southeast Quarter and Northwest corner of the Southwest Quarter of the Southeast Quarter, and a monument was found at the Southwest corner of the Southeast Quarter of Section 30 per the description below.

The corner location was established at a prorata location using existing monuments, fences, deeds and occupation lines within this and adjoining Sections.



I hereby certify that the survey work was completed
and this land surveying document was prepared by
me or under my direct personal supervision and
that I am a duly registered land surveyor under the
laws of the State of Iowa.

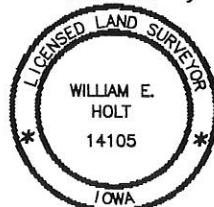
Signature: William E. Holt

William E. Holt

Iowa Registration No. 14105

My Registration Renews on December 31, 2006

Dated this 20th day of August, 2006 C.E.



Corners to be Indexed

Corner	Section	Township	Range
NW CORNER SE 1/4	30	84N	4E
NW CORNER SW 1/4 SE 1/4	30	84N	4E
SW CORNER SE 1/4	30	84N	4E

Book 2 Page 505



Document 10-1917

Book 2 Page 713 Type 15 001 Pages 1

Date 5/20/2010 Time 12:32 PM

Rec Amt \$9.00

ARLENE SCHAUF, RECORDER/REGISTRAR
JACKSON COUNTY IOWA

Prepared by: SCHNEIDER Land Surveying and Planning, Inc. P.O. Box 128 Farley, Iowa 52046 563-744-3631

UNITED STATES PUBLIC LAND SURVEY CORNER CERTIFICATE OF

Land Survey Monuments situated in Section 30, Township 84 North, Range 4 East
of the Fifth Principal Meridian, Jackson County, Iowa.

Previously recorded CENTER SEC.30 - S.C.C. BOOK 1 PAGE 434 & S.C.C. BOOK 2 PAGE 505.

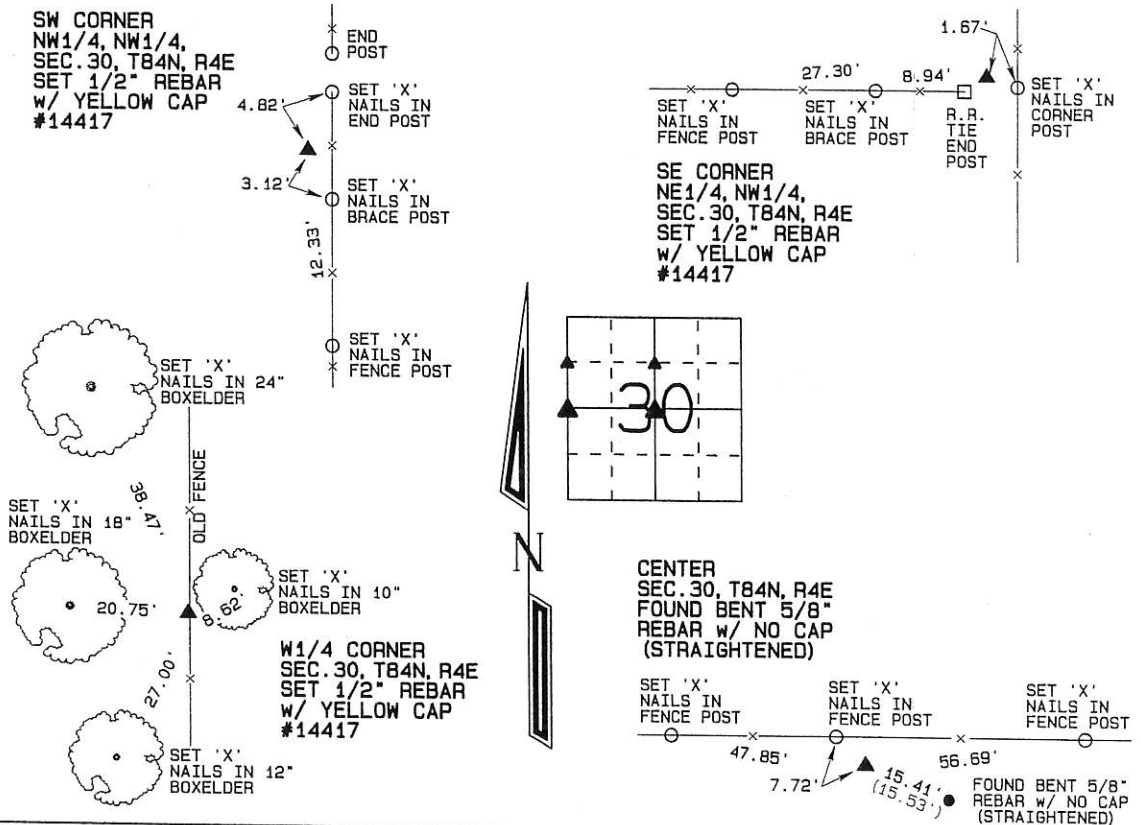
(Show reason for preparing this certificate, the evidence and detailed procedures used in establishing the corner positions and monumentation found or placed.)

Monument Description and Remarks: THE SW CORNER OF THE NW1/4 OF THE NW1/4 OF SECTION 30, T84N, R4E
WAS ESTABLISHED AT THE MIDPOINT OF A LINE FROM THE NW CORNER TO THE W1/4 CORNER OF SAID SECTION 30.

THE SE CORNER OF THE NE1/4 OF THE NW1/4 OF SECTION 30, T84N, R4E WAS ESTABLISHED ON A LINE FROM THE N1/4 CORNER
TO THE CENTER AND IN LINE WITH AN OCCUPATION FENCE RUNNING TO THE WEST. THE W1/4 CORNER OF SECTION 30, T84N, R4E
WAS ESTABLISHED USING OCCUPATION FENCES RUNNING TO THE NORTH AND SOUTH. A 5/8" REBAR WAS FOUND BENT AT THE
CENTER OF SECTION 30, T84N, R4E AS ILLUSTRATED IN A SECTION CORNER CERTIFICATE RECORDED IN S.C.C. BOOK 2, PAGE 505
IN THE OFFICE OF THE JACKSON COUNTY RECORDER. THE REBAR WAS STRAIGHTENED AND RETIED BECAUSE NO TIES REMAINED.

PLAN - VIEW

(Show a minimum of three reference ties to durable physical objects, relevant monuments and physical conditions that will enable recovery of the corner.)



I hereby certify that this land surveying document was prepared and the related survey work was performed by me or under my direct personal supervision and that I am a duly licensed Land Surveyor under the laws of the State of Iowa.

David P. Schneider 5/4/2010
David P. Schneider P.L.S. #14417 Date:
My license renewal date is December 31, 2011.

Pages or sheets covered by this seal: THIS SHEET ONLY

SCHNEIDER
Land Surveying & Planning, Inc.

P.O. Box 128 Farley, Iowa 52046
Ph. #563-744-3631 Fax #563-744-3629



List Corners to be Indexed

Corners	Section	Twp	Range
SW CORNER NW1/4, NW1/4	30	84N	4E
SE CORNER NE1/4, NW1/4	30	84N	4E
W1/4 CORNER	30	84N	4E
CENTER	30	84N	4E

Book 2 Page 713

JOB NO. 1425