



Document 05-3118

Book 2 Page 374 Type 06 023 Pages 1

Date 8/05/2005 Time 2:59 PM

Rec Amt \$7.00

PREPARED BY: EGGER ENGINEERING AND LAND SURVEYING, P.C.

2395 TECH DRIVE SUITE 2 BETTENDORF, IOWA 52722 563-332-6330

PHYLLIS M. GERLACH, RECORDER
JACKSON COUNTY IOWAUNITED STATES PUBLIC LAND SURVEY CORNER CERTIFICATE
OFLand Survey Monuments situated in Section 23, Township 85N, Range 2E, of the Fifth Principal Meridian, JACKSON County, Iowa. Previously recorded in NOT RECORDED in County Recorder's Office.

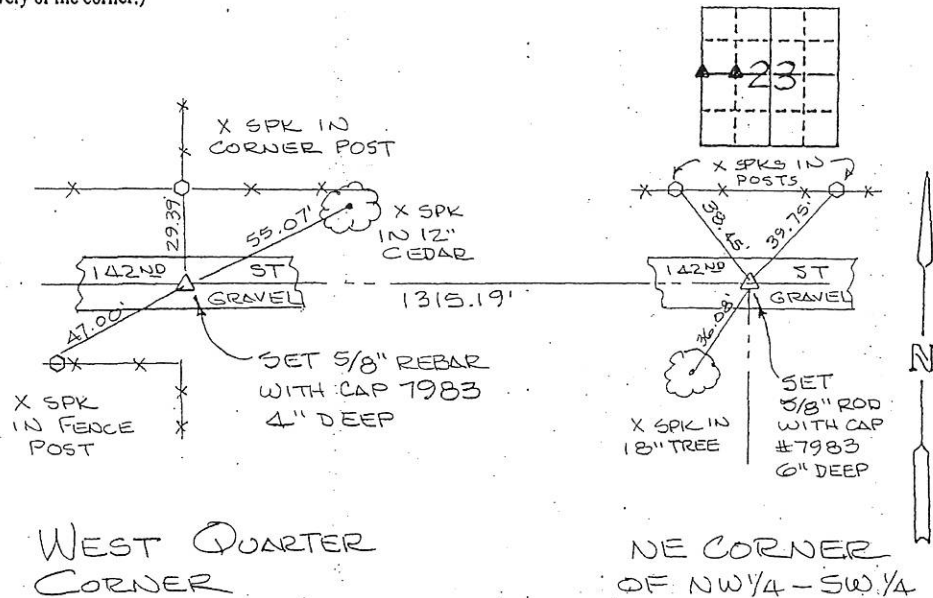
(book, page, document number, etc.)

(Show reason for preparing this certificate, the evidence and detailed procedures used in establishing the corner positions and monumentation found or placed.)

Monument Description and Remarks: BOTH MONUMENTS ARE 5/8" IRON RODS WITH YELLOW CAP #7983. NO EVIDENCE EXISTED OTHER THAN FENCES TO ESTABLISH THESE POINTS. WE COMPARED N-S FENCELINE INTERSECTIONS WITH THE E-W LINE FROM E 1/4 COR TO W 1/4 COR AND FOUND DISTANCES WERE WITHIN 5' OF CALC. POSITIONS.

PLAN - VIEW WE USED FENCE POSITIONS

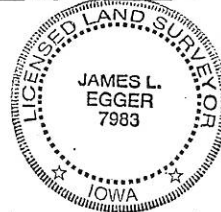
(Show a minimum of three reference ties to durable physical object, relevant monuments and physical conditions that will enable recovery of the corner.)



I hereby certify that the survey work was completed and this certificate was prepared by me or under my direct supervision and that I am a duly registered land surveyor under the laws of the state of Iowa.

Signature: James L. Egger
James L. Egger L.S.Date: 07/15/05 Reg. No. 7983

SEAL

List Corners to be Indexed
Corners Section Twp Range

West 1/4 23 85 2E

NE OF
NW 1/4 - SW 1/4 23 85 2E