

02-2960

FILE NO. 1 PAGE 575

02 JUL -5 AM 10:10

PHYLLIS M. GERLACH
JACKSON COUNTY, IOWA
RECORDER

Prepared by Vn. Burger Land Surveyors

510 3rd Street West Court, Worthington, Iowa

Phone 319 - 855 2028

JUL 6.00

UNITED STATES PUBLIC LAND SURVEY CORNER CERTIFICATE

Land Survey Monuments situated in Section 21, Township 84N, Range 4E, of the Fifth Principal Meridian, Jackson County, Iowa. Previously recorded in N/A in the Office of the County Recorder

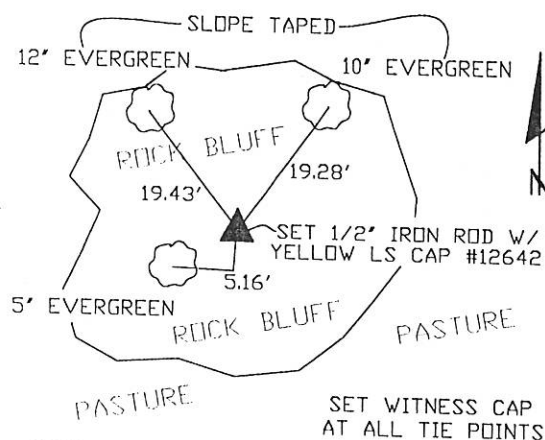
Monument Description and Remarks: (No Corner Certificates found at the County Recorders Office)

N1/4 CORNER - SET 1/2" IRON ROD W/YELLOW LS CAP #12642 - SET ON LINE AND
MIDWAY BETWEEN THE NW CORNER AND THE NE CORNER

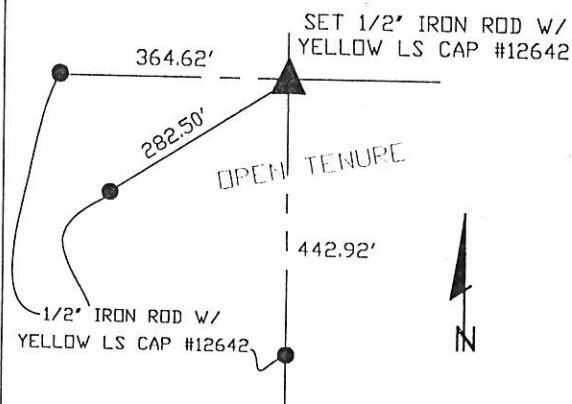
NE CORNER NW1/4 NE1/4 - SET 1/2" IRON ROD W/YELLOW LS CAP #12642 - SET ON LINE
AND MIDWAY BETWEEN THE N1/4 CORNER AND THE NE CORNER

SW CORNER NE1/4 NE1/4 - SET 1/2" IRON ROD W/YELLOW LS CAP #12642 - RUN STRAIGHT
LINES FROM OPPOSITE 1/4 1/4 CORNERS AND SET AT POINT OF INTERSECTION

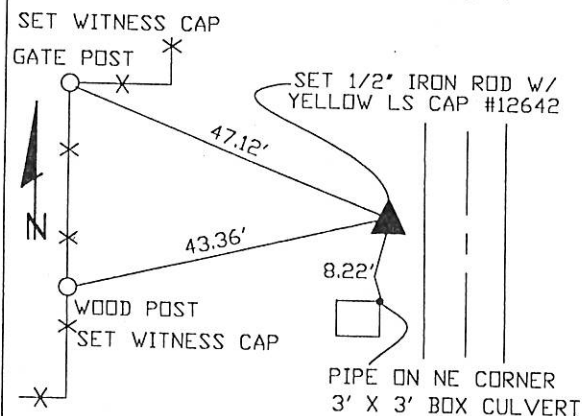
N1/4 CORNER PLAN VIEW



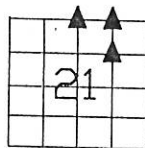
NE CORNER NW1/4 NE1/4



SW CORNER NE1/4 NE1/4



NOTE: SEARCHED AREA FOR ALL
MONUMENTS BUT NOTHING FOUND



SEAL

SEC. 21 TWP. 84N RANGE 4E

I hereby certify that this land surveying document was prepared and related survey work was performed by me or under my direct personal supervision and that I am a duly licensed Land Surveyor under the laws of the State of Iowa.

William H. Burger 6/29/02
William H. Burger Date

License number 12642

My license renewal date is December 31, 2002

Pages or Sheets covered by this seal: Sheet 1 of 1

CORNERS TO BE INDEXED

N1/4 CORNER	21	84N	4E
NE CORNER NW1/4 NE1/4	21	84N	4E
SW CORNER NE1/4 NE1/4	21	84N	4E

FILE NO. 03-6969
BOOK 2 PAGE 208

03 DEC 16 AM 9:38

PHYLLIS M. GERLACH
JACKSON COUNTY, IOWA

Prepared by Wm. Burger Land Surveyors

510 3rd Street West Court, Worthington, Iowa

Phone 563 - 855 1000

RECORDED
Fee \$11.00

UNITED STATES PUBLIC LAND SURVEY CORNER CERTIFICATE

Land Survey Monuments situated in Section 21, Township 84N, Range 4E, of the Fifth Principal Meridian, Jackson County, Iowa. Previously recorded in N/A in the Office of the County Recorder

Monument Description and Remarks: (No Corner Certificates found at the County Recorder's Office)

SW CORNER NW1/4 NW1/4 - SET 1/2" IRON ROD W/YELLOW LS CAP #12642 - USED

EXISTING FENCELINE EVIDENCE AND ACCEPTED THE CORNER POST AS THE CORNER

CENTER OF SECTION - SET 1/2" IRON ROD W/YELLOW LS CAP #12642 - USED FENCELINE EVIDENCE

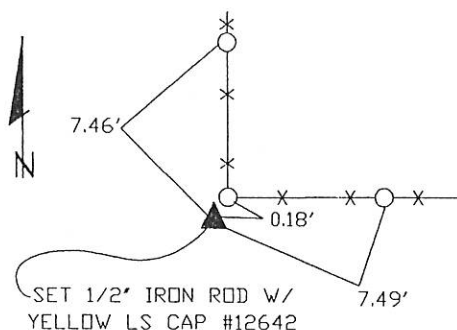
RUN STRAIGHT LINES FROM OPPOSITE 1/4 CORNERS AND SET CORNER AT POINT OF INTERSECTION

SE CORNER SW1/4 NE1/4 - SET 1/2" IRON ROD W/YELLOW LS CAP #12642 - SET ON LINE AND MIDWAY BETWEEN THE CENTER OF SECTION AND THE E1/4 CORNER

NW CORNER NW1/4 NW1/4 - SET 1/2" IRON ROD W/YELLOW LS CAP #12642 - SET ON LINE AND DOUBLED THE DISTANCE BETWEEN W1/4 COR. & NW COR. SW1/4 NW1/4

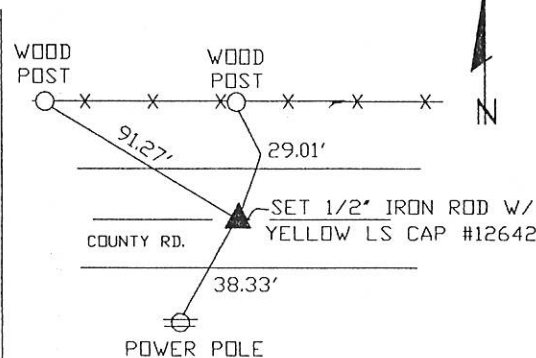
PLAN VIEW

SW CORNER NW1/4 NW1/4



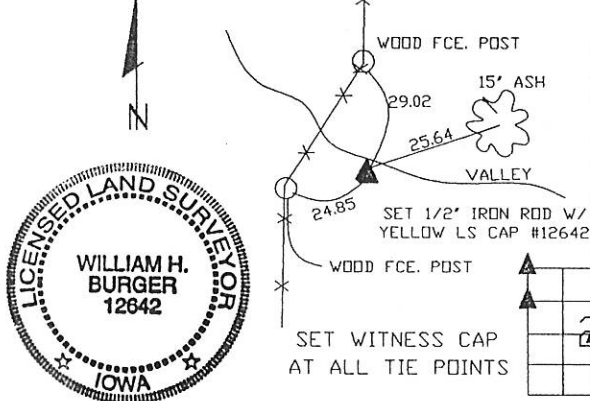
SET WITNESS CAP
AT ALL TIE POINTS

CENTER OF SECTION



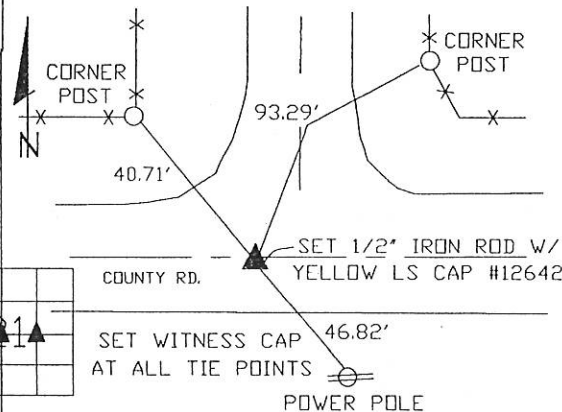
SET WITNESS CAP
AT ALL TIE POINTS

NW CORNER NW1/4 NW1/4



SET WITNESS CAP
AT ALL TIE POINTS

SE CORNER SW1/4 NE1/4



SET WITNESS CAP
AT ALL TIE POINTS



SEAL

SEC. 21 TWP. 84N RANGE 4E

I hereby certify that this land surveying document was prepared and related survey work was performed by me or under my direct personal supervision and that I am a duly licensed Land Surveyor under the laws of the State of Iowa.

William H. Burger 11/25/03
William H. Burger Date

License number 12642

My license renewal date is December 31, 2004

Pages or Sheets covered by this seal: Sheet 1 of 1

CORNERS TO BE INDEXED

SW CORNER NW1/4 NW1/4	21	84N	4E
CENTER OF SECTION	21	84N	4E
SE CORNER SW1/4 NE1/4	21	84N	4E
NW CORNER NW1/4 NW1/4	21	84N	4E