



Document 14-1227

Book 3 Page 131 Type 15 001 Pages 1

Date 4/18/2014 Time 11:25 AM

Rec Amt \$7.00

ARLENE SCHAUF, RECORDER/REGISTRAR
JACKSON COUNTY IOWA

PREPARED BY: MICHAEL J. WEBER, WEBER SURVEYING, LLC, 26789 46TH AVE, BERNARD, IA 52032 (563) 879-4173

UNITED STATES PUBLIC LAND SURVEY CORNER CERTIFICATE OF

LAND SURVEY MONUMENTS SITUATED IN SECTION 20, TOWNSHIP 84 NORTH, RANGE 4 EAST
OF THE FIFTH PRINCIPAL MERIDIAN, JACKSON COUNTY, IOWA.
PREVIOUSLY RECORDED NONE

(book, page, document number, etc.)

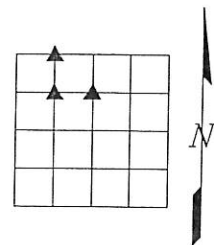
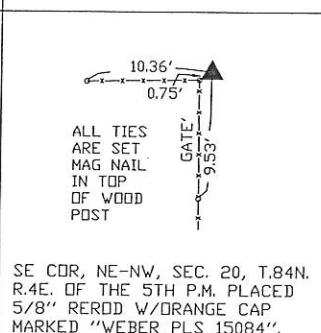
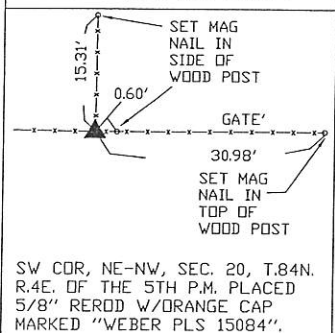
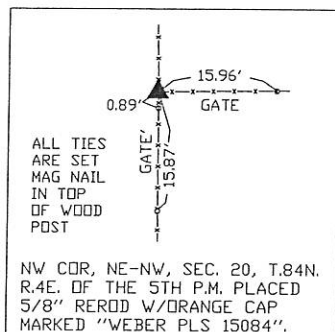
(Show reason for preparing this certificate, the evidence and detailed procedures used in establishing the corner positions and nonumentation found or placed.)

Monument Description and Remarks:

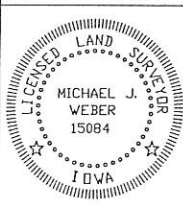
-NW COR, NE-NW, SEC. 20, T.84N. R.4E. OF THE 5TH P.M. PLACED 5/8" REROD W/ORANGE CAP MARKED "WEBER PLS 15084". ESTABLISHED CORNER AT THE INTERSECTION OF OCCUPATION FENCELINE RUNNING NORTH, SOUTH AND EAST
-SW COR, NE-NW, SEC. 20, T.84N. R.4E. OF THE 5TH P.M. PLACED 5/8" REROD W/ORANGE CAP MARKED "WEBER PLS 15084". ESTABLISHED CORNER AT THE INTERSECTION OF OCCUPATION FENCELINE RUNNING NORTH, WEST AND EAST
-SE COR, NE-NW, SEC. 20, T.84N. R.4E. OF THE 5TH P.M. PLACED 5/8" REROD W/ORANGE CAP MARKED "WEBER PLS 15084". ESTABLISHED CORNER AT THE INTERSECTION OF OCCUPATION FENCELINE RUNNING WEST AND SOUTH

(Show a minimum of three reference ties to durable physical objects, relevant monuments and physical conditions that will enable recovery of the corner.)

PLAN - VIEW



DWG. NO. 13\13064



I HEREBY CERTIFY THAT THIS LAND SURVEYING DOCUMENT WAS PREPARED AND THE RELATED SURVEY WORK WAS PERFORMED BY ME OR UNDER MY DIRECT PERSONAL SUPERVISION AND THAT I AM A DULY LICENSED LAND SURVEYOR UNDER THE LAWS OF THE STATE OF IOWA.

Michael J. Weber March 24, 2014
MICHAEL J. WEBER (DATE)
LICENSE NUMBER 15084
MY LICENSE RENEWAL DATE IS DECEMBER 31, 2015

SHEETS COVERED BY THIS SEAL: THIS SHEET

List Corners to be Indexed			
Corner	Sec	Twp	Range
NW COR, NE-NW	20	84N	4E
SW COR, NE-NW	20	84N	4E
SE COR, NE-NW	20	84N	4E



Document 15-1219

Book 2015 Page 1219 Type 15 001 Pages 1
Date 4/24/2015 Time 2:59 PM
Rec Amt \$7.00

ARLENE SCHAUF, RECORDER/REGISTRAR
JACKSON COUNTY IOWA

PREPARED BY: MICHAEL J. WEBER, WEBER SURVEYING, LLC, 26789 46TH AVE, BERNARD, IA 52032 (563) 879-4173

UNITED STATES PUBLIC LAND SURVEY CORNER CERTIFICATE OF

LAND SURVEY MONUMENTS SITUATED IN SECTION 20, TOWNSHIP 84 NORTH, RANGE 4 EAST
OF THE FIFTH PRINCIPAL MERIDIAN, JACKSON COUNTY, IOWA.
PREVIOUSLY RECORDED SEE NOTES BELOW

(book, page, document number, etc.)

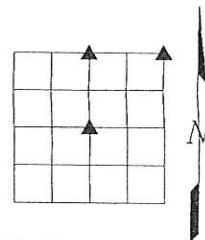
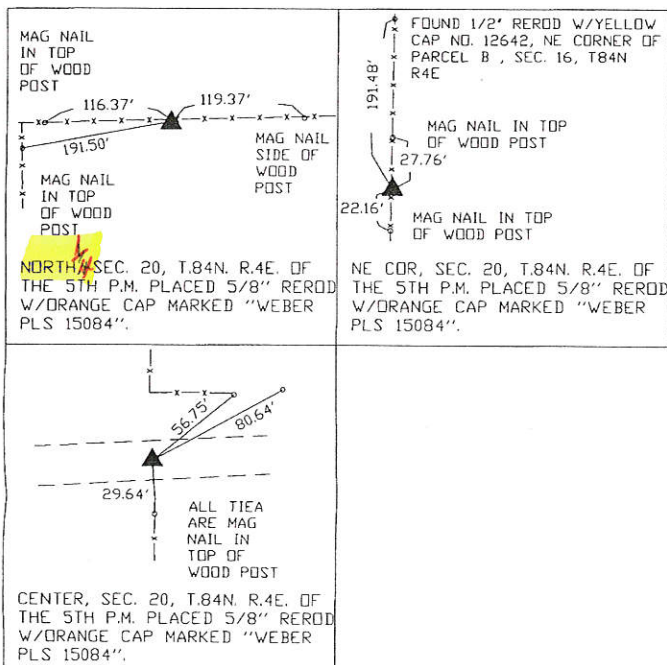
(Show reason for preparing this certificate, the evidence and detailed procedures used in establishing the corner positions and monumentation found or placed.)

Monument Description and Remarks:

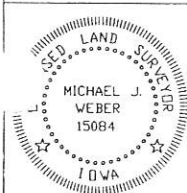
-NE, SEC. 20, T.84N. R.4E. OF THE 5TH P.M. PLACED 5/8" REROD W/ORANGE CAP MARKED "WEBER PLS 15084". ESTABLISHED CORNER USING PLAT OF SURVEY IN BOOK 1-D PAGE 13, DOC. NO. 03-6968. CORNER PREVIOUSLY RECORDED IN BOOK 2 PAGE 208, DOC. NO. 03-6969 AS THE NW CORNER OF SECTION 21, T84N R4E
-NORTH 1/4, SEC. 20, T.84N. R.4E. OF THE 5TH P.M. PLACED 5/8" REROD W/ORANGE CAP MARKED "WEBER PLS 15084". ESTABLISHED CORNER MIDWAY BETWEEN THE NE AND NW CORNER OF SEC. 20 AND IN LINE WITH THE OCCUPATION FENCELINE RUNNING EAST & WEST
-CENTER, SEC. 20, T.84N. R.4E. OF THE 5TH P.M. PLACED 5/8" REROD W/ORANGE CAP MARKED "WEBER PLS 15084". ESTABLISHED CORNER AT THE INTERSECTION OF OCCUPATION FENCELINE RUNNING NORTH & SOUTH AND THE CENTERLINE OF 42ND STREET RIGHT OF WAY

(Show a minimum of three reference ties to durable physical objects, relevant monuments and physical conditions that will enable recovery of the corner.)

PLAN - VIEW



DWG. NO. 13\13064\PARCEL-B



I HEREBY CERTIFY THAT THIS LAND SURVEYING DOCUMENT WAS PREPARED AND THE RELATED SURVEY WORK WAS PERFORMED BY ME OR UNDER MY DIRECT PERSONAL SUPERVISION AND THAT I AM A DULY LICENSED LAND SURVEYOR UNDER THE LAWS OF THE STATE OF IOWA.
Michael J. Weber April 6, 2015
MICHAEL J. WEBER (DATE)
LICENSE NUMBER 15084
MY LICENSE RENEWAL DATE IS DECEMBER 31, 2015
SHEETS COVERED BY THIS SEAL: THIS SHEET

Corner	Sec	Twp	Range
NORTH 1/4 COR.	20	84N	4E
NE COR.	20	84N	4E
CENTER	20	84N	4E