



Document 14-1522

Book 3 Page 133 Type 15 001 Pages 1
Date 5/14/2014 Time 11:47 AM
Rec Amt \$7.00

ARLENE SCHAUF, RECORDER/REGISTRAR
JACKSON COUNTY IOWA

PREPARED BY: MICHAEL J. WEBER, WEBER SURVEYING, LLC, 26789 46TH AVE, BERNARD, IA 52032 (563) 879-4173

UNITED STATES PUBLIC LAND SURVEY CORNER CERTIFICATE OF

LAND SURVEY MONUMENTS SITUATED IN SECTION 1, TOWNSHIP 84 NORTH, RANGE 4 EAST
OF THE FIFTH PRINCIPAL MERIDIAN, JACKSON COUNTY, IOWA.
PREVIOUSLY RECORDED NONE UNLESS OTHERWISE NOTED

(book, page, document number, etc.)

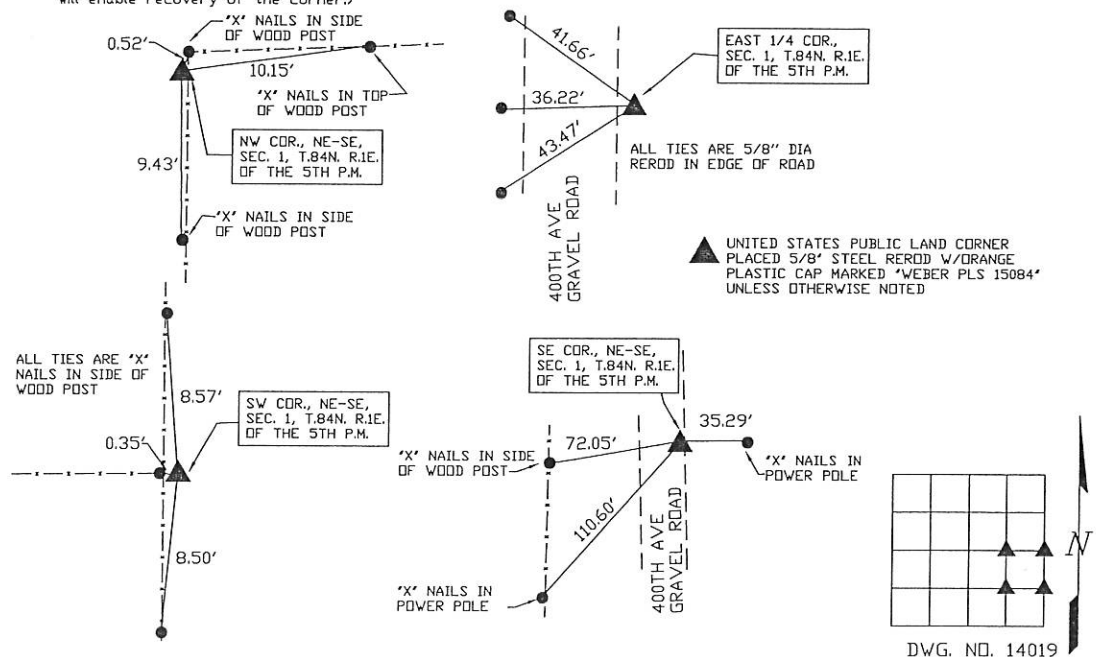
(Show reason for preparing this certificate, the evidence and detailed procedures used in establishing the corner positions and monumentation found or placed.)

Monument Description and Remarks:

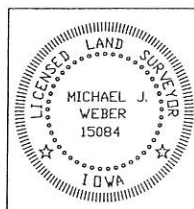
- NW COR., NE-SE, SEC. 1, T.84N. R.1E. OF THE 5TH P.M. PLACED 5/8" DIA. REROD W/ORANGE MARKED "WEBER PLS 15084" - ESTABLISHED CORNER AT THE OCCUPATION FENCELINE RUNNING SOUTH AND EAST
- EAST 1/4 COR., SEC. 1, T.84N. R.1E. OF THE 5TH P.M. PLACED 5/8" DIA. REROD W/ORANGE MARKED "WEBER PLS 15084" - ESTABLISHED CORNER ON LINE AND MIDWAY BETWEEN THE NE CORNER AND SE CORNER OF SEC. 1
- SE COR., NE-SE, SEC. 1, T.84N. R.1E. OF THE 5TH P.M. PLACED 5/8" DIA. REROD W/ORANGE MARKED "WEBER PLS 15084" - ESTABLISHED CORNER ON LINE AND MIDWAY BETWEEN THE EAST 1/4 CORNER AND SE CORNER OF SEC. 1
- SW COR., NE-SE, SEC. 1, T.84N. R.1E. OF THE 5TH P.M. PLACED 5/8" DIA. REROD W/ORANGE MARKED "WEBER PLS 15084" - ESTABLISHED CORNER AT THE OCCUPATION FENCELINE RUNNING NORTH AND SOUTH AND WEST

PLAN - VIEW

(Show a minimum of three reference ties to durable physical objects, relevant monuments and physical conditions that will enable recovery of the corner.)



DWG. NO. 14019



I HEREBY CERTIFY THAT THIS LAND SURVEYING DOCUMENT WAS
PREPARED AND THE RELATED SURVEY WORK WAS PERFORMED BY ME OR
UNDER MY DIRECT PERSONAL SUPERVISION AND THAT I AM A DULY
LICENSED LAND SURVEYOR UNDER THE LAWS OF THE STATE OF IOWA.

Michael J. Weber May 13, 2014
MICHAEL J. WEBER (DATE)

LICENSE NUMBER 15084

MY LICENSE RENEWAL DATE IS DECEMBER 31, 2015

SHEETS COVERED BY THIS SEAL: THIS SHEET ONLY

List Corners to be Indexed		
Corner	Sec	Twp Range
NW COR., NE-SE	1	84N 4E
EAST 1/4 COR.	1	84N 4E
SE COR., NE-SE	1	84N 4E
SW COR., NE-SE	1	84N 4E