



Document 10-1915

Book 2 Page 711 Type 15 001 Pages 1
Date 5/20/2010 Time 12:32 PM
Rec Amt \$9.00

ARLENE SCHAUF, RECORDER/REGISTRAR
JACKSON COUNTY IOWA

Prepared by: SCHNEIDER Land Surveying and Planning, Inc. P.O. Box 128 Farley, Iowa 52046 563-744-3631

UNITED STATES PUBLIC LAND SURVEY CORNER CERTIFICATE OF

Land Survey Monuments situated in Section 19, Township 84 North, Range 4 East
of the Fifth Principal Meridian, Jackson County, Iowa.

Previously recorded S1/4 CORNER SEC. 19 - S.C.C. BOOK 1 PAGE 434

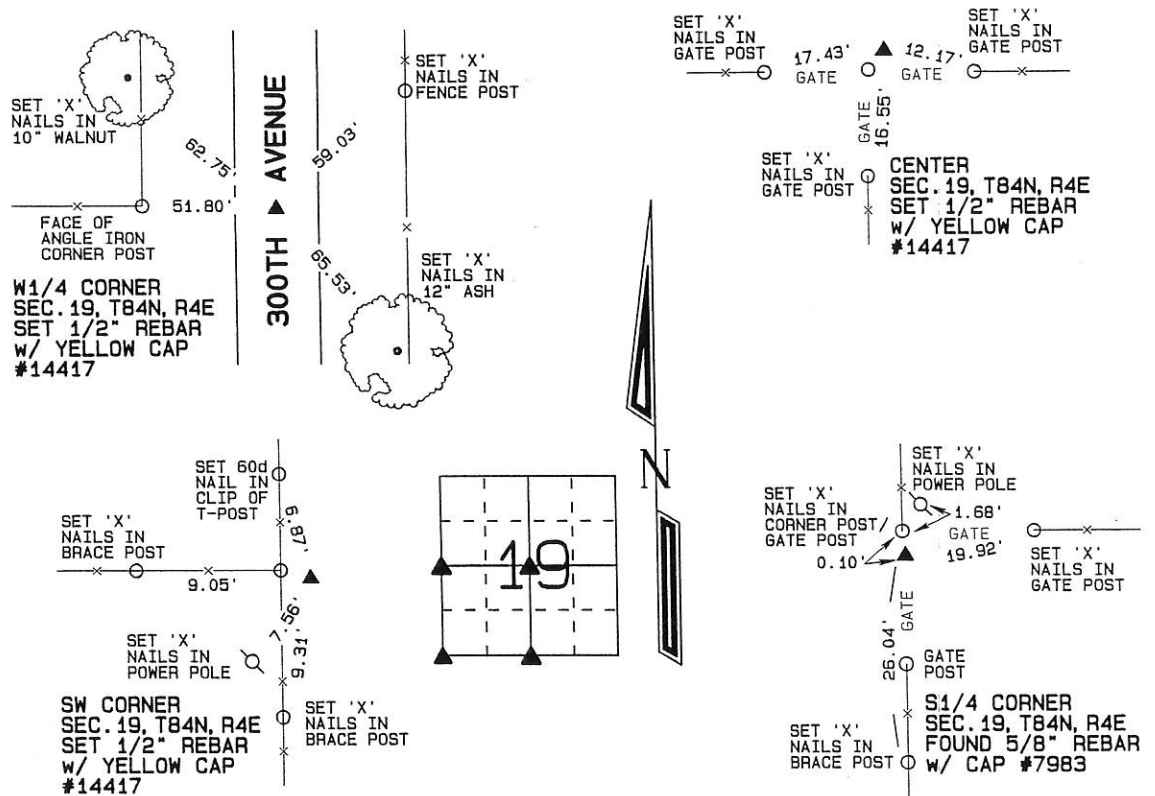
(BOOK, PAGE / INST. NO. / CABINET, SLIDE)

(Show reason for preparing this certificate, the evidence and detailed procedures used in establishing the corner positions and monumentation found or placed.)

Monument Description and Remarks: THE W1/4 CORNER OF SECTION 19, T84N, R4E WAS ESTABLISHED IN THE CENTERLINE OF 300TH AVENUE AND IN LINE WITH AN OCCUPATION FENCE RUNNING TO THE WEST. THE CENTER OF SECTION 19, T84N, R4E WAS ESTABLISHED AT THE INTERSECTION OF OCCUPATION FENCES RUNNING EAST, WEST AND SOUTH.
THE SOUTHWEST CORNER OF SECTION 19, T84N, R4E WAS ESTABLISHED AT THE INTERSECTION OF OCCUPATION FENCES RUNNING NORTH, SOUTH AND WEST. A 5/8" REBAR WAS FOUND AT THE S1/4 CORNER OF SECTION 19, T84N, R4E AS ILLUSTRATED ON A SECTION CORNER CERTIFICATE RECORDED IN S.C.C. BOOK 1, PAGE 434 IN THE OFFICE OF THE JACKSON COUNTY RECORDER. THE CORNER WAS RETIED BECAUSE NO TIES REMAINED.

PLAN - VIEW

(Show a minimum of three reference ties to durable physical objects, relevant monuments and physical conditions that will enable recovery of the corner.)



I hereby certify that this land surveying document was prepared and the related survey work was performed by me or under my direct personal supervision and that I am a duly licensed Land Surveyor under the laws of the State of Iowa.

David P. Schneider 5/4/2010
David P. Schneider P.L.S. #14417 Date:
My license renewal date is December 31, 2011.

Pages or sheets covered by this seal: THIS SHEET ONLY

SCHNEIDER
Land Surveying & Planning, Inc.

P.O. Box 128 Farley, Iowa 52046
Ph. #563-744-3631 Fax #563-744-3629



List Corners to be Indexed

Corners	Section	Twp	Range
W1/4 CORNER	19	84N	4E
CENTER	19	84N	4E
SW CORNER	19	84N	4E
S1/4 CORNER	19	84N	4E

Book 2 Page 711

JOB NO. 1425



Document 10-1916

Book 2 Page 712 Type 15 001 Pages 1

Date 5/20/2010 Time 12:32 PM

Rec Amt \$9.00

ARLENE SCHAUF, RECORDER/REGISTRAR
JACKSON COUNTY IOWA

Prepared by: SCHNEIDER Land Surveying and Planning, Inc. P.O. Box 128 Farley, Iowa 52046 563-744-3631

UNITED STATES PUBLIC LAND SURVEY CORNER CERTIFICATE OFLand Survey Monuments situated in Section 19, Township 84 North, Range 4 East
of the Fifth Principal Meridian, Jackson County, Iowa.

Previously recorded (NONE OF RECORD)

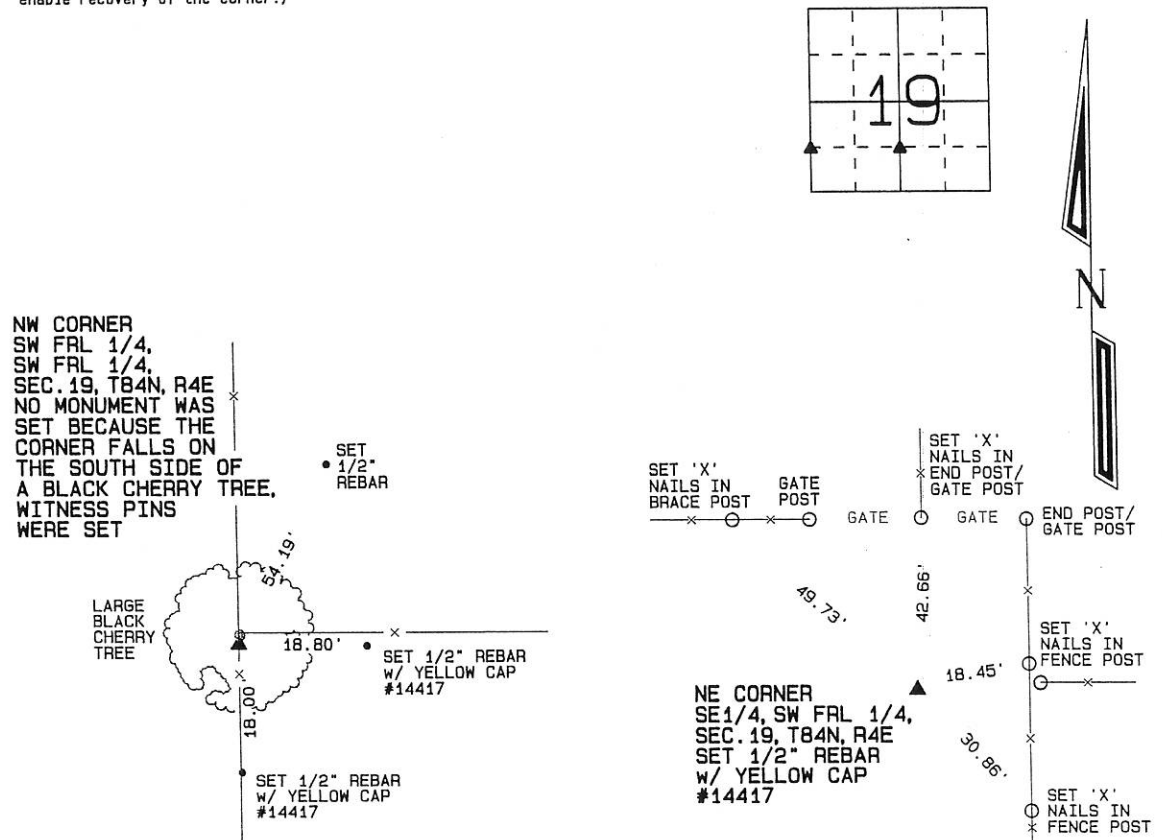
(BOOK, PAGE / INST. NO. / CABINET, SLIDE)

(Show reason for preparing this certificate, the evidence and detailed procedures used in establishing the corner positions and monumentation found or placed.)

Monument Description and Remarks: THE NW CORNER OF THE SW FRACTIONAL 1/4 OF THE SW FRACTIONAL 1/4
OF SECTION 19, T84N, R4E WAS ESTABLISHED AT THE MIDPOINT OF A LINE FROM THE W1/4 CORNER TO THE SW CORNER OF
SAID SECTION 19. THE NE CORNER OF THE SE1/4 OF THE SW FRACTIONAL 1/4 OF SECTION 19, T84N, R4E WAS ESTABLISHED
AT THE MIDPOINT OF A LINE FROM THE CENTER TO THE S1/4 CORNER OF SAID SECTION 19.

PLAN - VIEW

(Show a minimum of three reference ties to durable physical objects, relevant monuments and physical conditions that will enable recovery of the corner.)



I hereby certify that this land surveying document was prepared and the related survey work was performed by me or under my direct personal supervision and that I am a duly licensed Land Surveyor under the laws of the State of Iowa.

David P. Schneider P.L.S. #14417

Date: 5/4/2010

My license renewal date is December 31, 2011.

Pages or sheets covered by this seal: THIS SHEET ONLY

SCHNEIDER
Land Surveying & Planning, Inc.

P.O. Box 128 Farley, Iowa 52046
Ph. #563-744-3631 Fax#563-744-3629

**List Corners to be Indexed**

Corners	Section	Twp	Range
NW CORNER	19	84N	4E
SW FRL 1/4, SW FRL 1/4			
NE CORNER	19	84N	4E
SE1/4, SW FRL 1/4			

Book 2 Page 712

JOB NO. 1425



Document 13-2496

Book 3 Page 92 Type 15 001 Pages 1
Date 6/18/2013 Time 11:30 AM
Rec Amt \$7.00

ARLENE SCHAUF, RECORDER/REGISTRAR
JACKSON COUNTY IOWA

PREPARED BY: MICHAEL J. WEBER, WEBER SURVEYING, LLC, 26789 46TH AVE, BERNARD, IA 52032 (563) 879-4173

UNITED STATES PUBLIC LAND SURVEY CORNER CERTIFICATE OF

LAND SURVEY MONUMENTS SITUATED IN SECTION 19, TOWNSHIP 84 NORTH, RANGE 4 EAST
OF THE FIFTH PRINCIPAL MERIDIAN, JACKSON COUNTY, IOWA.
PREVIOUSLY RECORDED Book 2 Page 711, Doc. No. 10-1915
(book, page, document number, etc.)

(Show reason for preparing this certificate, the evidence and detailed procedures used in establishing the corner positions and nonumentation found or placed.)

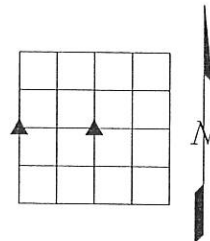
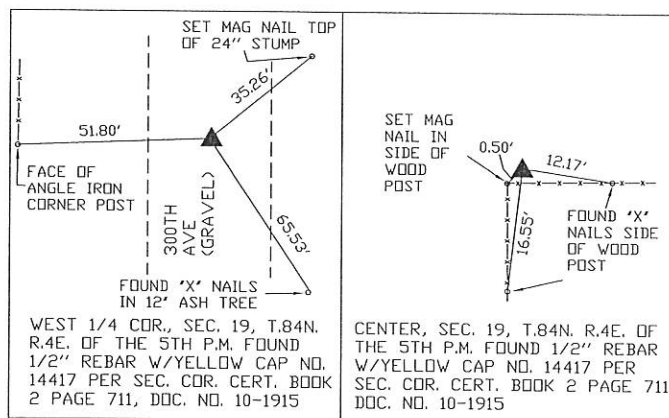
Monument Description and Remarks:

-WEST 1/4 COR., SEC. 19, T.84N. R.4E. OF THE 5TH P.M. FOUND 1/2" REBAR W/YELLOW CAP NO. 14417 PER SEC. COR. CERT. BOOK 2 PAGE 711, DOC. NO. 10-1915, ESTABLISHED NEW TIES.

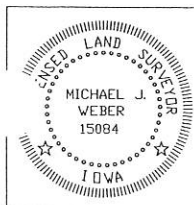
-CENTER, SEC. 19, T.84N. R.4E. OF THE 5TH P.M. FOUND 1/2" REBAR W/YELLOW CAP NO. 14417 PER SEC. COR. CERT. BOOK 2 PAGE 711, DOC. NO. 10-1915, ESTABLISHED NEW TIES.

(Show a minimum of three reference ties to durable physical objects, relevant monuments and physical conditions that will enable recovery of the corner.)

PLAN - VIEW



DWG. NO. 13\13029



I HEREBY CERTIFY THAT THIS LAND SURVEYING DOCUMENT WAS PREPARED AND THE RELATED SURVEY WORK WAS PERFORMED BY ME OR UNDER MY DIRECT PERSONAL SUPERVISION AND THAT I AM A DULY LICENSED LAND SURVEYOR UNDER THE LAWS OF THE STATE OF IOWA.

Michael J. Weber June 6, 2013
MICHAEL J. WEBER (DATE)

LICENSE NUMBER 15084

MY LICENSE RENEWAL DATE IS DECEMBER 31, 2013

SHEETS COVERED BY THIS SEAL: THIS SHEET

List Corners to be Indexed

Corner	Sec	Twp	Range
W 1/4 COR	19	84N	4E
CENTER	19	84N	4E