

02 2961

FILE NO. 1 PAGE 576

02 JUL -5 AM 10:10

PHYLLIS M. GERLACH
JACKSON COUNTY, IOWA
RECORDER

Prepared by Vn. Burger LandSurveyors

510 3rd Street West Court, Worthington, Iowa

Phone 319 - 855 2828

JUL 6 2002

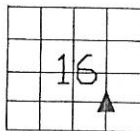
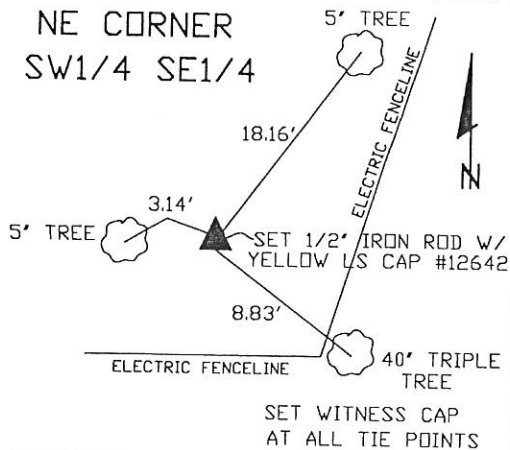
UNITED STATES PUBLIC LAND SURVEY CORNER CERTIFICATE

Land Survey Monuments situated in Section 16, Township 84N, Range 4E, of the Fifth Principal Meridian, Jackson County, Iowa. Previously recorded in N/A in the Office of the County Recorder

Monument Description and Remarks: (No Corner Certificates Found at the County Recorders Office)

NE CORNER SW1/4 SE1/4 - SET 1/2" IRON ROD W/YELLOW LS CAP #12642 - RUN STRAIGHT LINES FROM OPPOSITE 1/4 1/4 CORNERS AND SET AT POINT OF INTERSECTION; SEARCHED AREA FOR EXISTING MONUMENT BUT NOT FIND ANYTHING

PLAN VIEW



SEAL

SEC. 16 TWP. 84N RANGE 4E

I hereby certify that this land surveying document was prepared and related survey work was performed by me or under my direct personal supervision and that I am a duly licensed Land Surveyor under the laws of the State of Iowa.

William H. Burger 6/29/02
William H. Burger Date

License number 12642

My license renewal date is December 31, 2002

Pages or Sheets covered by this seal Sheet 1 of 1

CORNERS TO BE INDEXED

NE CORNER SW1/4 SE1/4 16 84N 4E

FILE NO. 03-6970
PAGE 209

03 DEC 16 AM 9:38

PHYLLIS M. GERLACH
JACKSON COUNTY, IOWA
RECORDER # 11.00

Prepared by Wm. Burger Land Surveyors 510 3rd Street West Court, Worthington, Iowa

Phone 563-855-2028

UNITED STATES PUBLIC LAND SURVEY CORNER CERTIFICATE

Land Survey Monuments situated in Section 16, Township 84N, Range 4E, of the Fifth Principal Meridian, Jackson County, Iowa. Previously recorded in N/A in the Office of the County Recorder

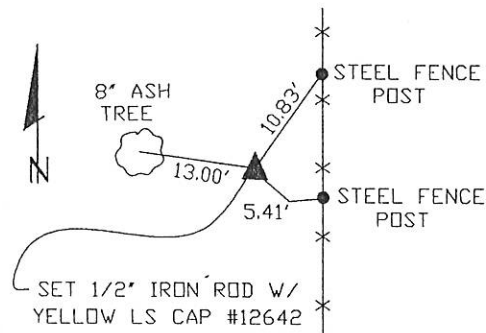
Monument Description and Remarks: (No Corner Certificates found at the County Recorders Office)

NW CORNER SW1/4 SW1/4 - SET 1/2" IRON ROD W/YELLOW LS CAP #12642 - SET ON LINE
AND MIDWAY BETWEEN THE CENTER OF SECTION AND THE S1/4 CORNER

NE CORNER SE1/4 SW1/4 - SET 1/2" IRON ROD W/YELLOW LS CAP #12642 - SET ON LINE
AND MIDWAY BETWEEN THE SW CORNER & THE NW CORNER

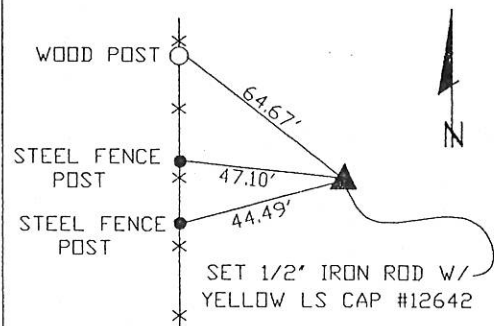
PLAN VIEW

NW CORNER SW1/4 SW1/4

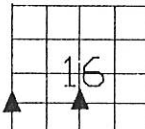
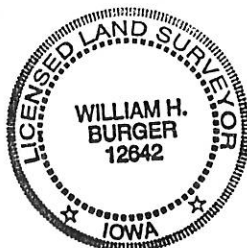


SET WITNESS CAP
AT ALL TIE POINTS

NE CORNER SE1/4 SW1/4



SET WITNESS CAP
AT ALL TIE POINTS



SEAL

SEC. 16 TWP. 84N RANGE 4E

I hereby certify that this land surveying document was prepared and related survey work was performed by me or under my direct personal supervision and that I am a duly licensed Land Surveyor under the laws of the State of Iowa.

William H. Burger 11/23/03
William H. Burger Date

License number 12642

My license renewal date is December 31, 2004

Pages or Sheets covered by this seal: Sheet 1 of 1

CORNERS TO BE INDEXED

NW CORNER SW1/4 SW1/4 16 84N 4E

NE CORNER SE1/4 SW1/4 16 84N 4E



Document 06-4671

Book 2 Page 498 Type 15 001 Pages 1

Date 12/08/2006 Time 1:50 PM

Rec Amt \$7.00

ARLENE SCHAUF, RECORDER
JACKSON COUNTY IOWA

Prepared by Thomas C. Tucker, L.S., 3851 Eagle Hts., Clinton, IA 52732 (563-242-5392)

SLSI 9-94

UNITED STATES PUBLIC LAND SURVEY CORNER CERTIFICATE

OF

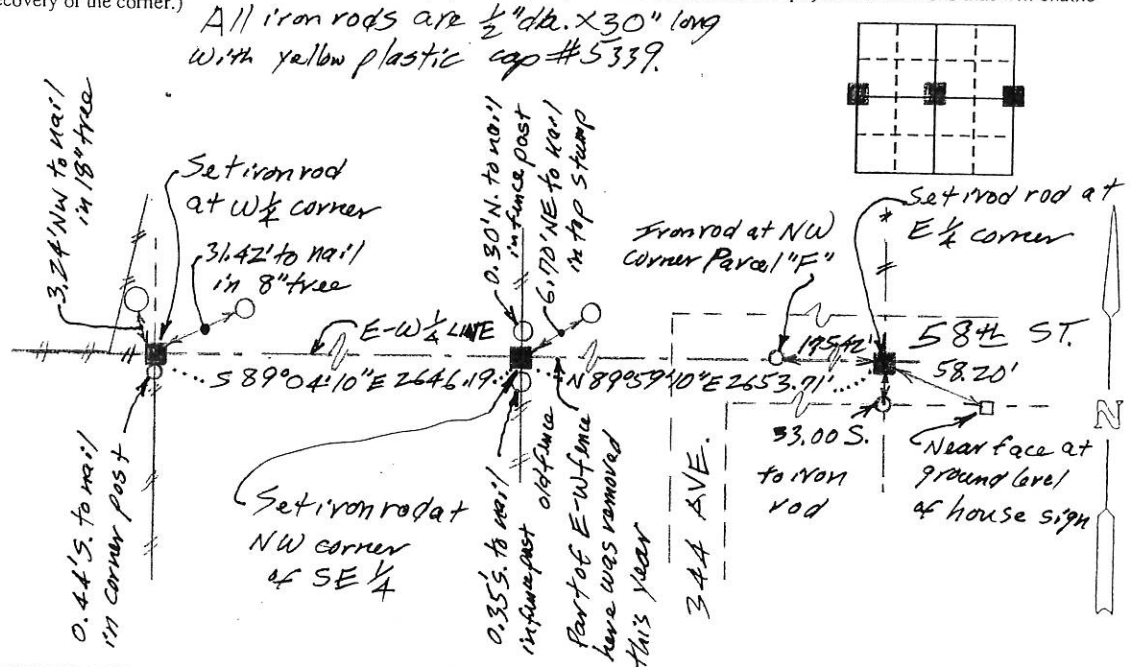
Land Survey Monuments situated in Section 16, Township 84 N, Range 4 E, of the Fifth Principal Meridian JACKSON County, Iowa.
Previously recorded in N.A. (book, page, document number, etc.) in County Recorder's Office.

(Show reason for preparing this certificate, the evidence and detailed procedures used in establishing the corner positions and monumentation found or placed.)

Monument Description and Remarks: Found no monuments. For this many survey.W 1/4 corner: Set iron rod at fence corner.NW corner of SE 1/4: Set iron rod at old fence corner as attested to by client who knew where previous fences were.E 1/4 corner: Set iron rod in center of roadbed in line with old fence to the north.

PLAN - VIEW

(Show a minimum of three reference ties to durable physical objects, relevant monuments and physical conditions that will enable recovery of the corner.)



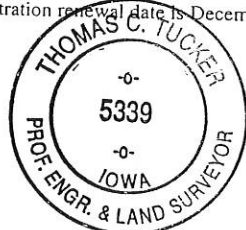
I hereby certify that the survey work was completed and this land surveying document was prepared by me or under my direct personal supervision and that I am a duly registered land surveyor under the laws of the state of Iowa

Signature: Thomas C. Tucker

Name typed or printed:

Date: 11/2/06 Reg. No. 5339My registration renewal date is December 31, 2007

SEAL



Corners	Section	Twp	Range
W 1/4,	16	84N	4E
E 1/4,			
NW of SE 1/4			