



Document 06-3867

Book 2 Page 484 Type 15 001 Pages 1

Date 10/06/2006 Time 8:28 AM

Rec Amt \$7.00

ARLENE SCHAUF, RECORDER
JACKSON COUNTY IOWA

Prepared by Thomas C. Tucker, L.S., 3851 Eagle Hts., Clinton, IA 52732 (563-242-5392)

SLS19-94

UNITED STATES PUBLIC LAND SURVEY CORNER CERTIFICATE

OF

Land Survey Monuments situated in Section 15, Township 84 N, Range 4 E, of the Fifth Principal Meridian, JACKSON County, Iowa.
Previously recorded in Bk. 1 - p. 281 in County Recorder's Office.

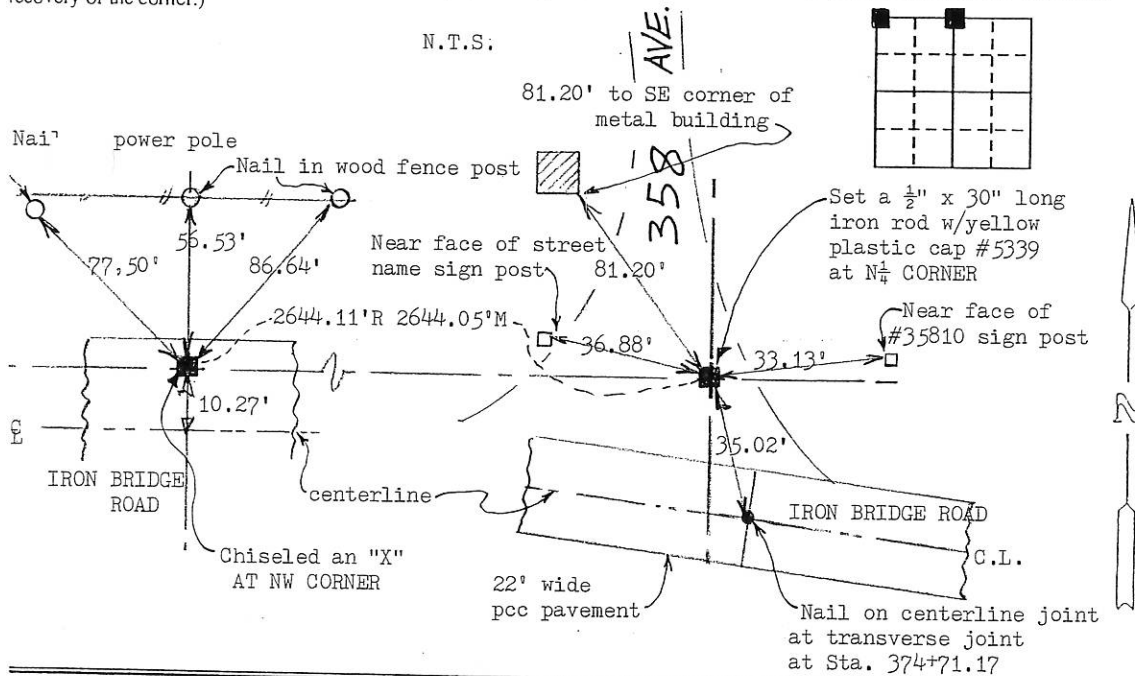
(book, page, document number, etc.)

(Show reason for preparing this certificate, the evidence and detailed procedures used in establishing the corner positions and monumentation found or placed.)

Monument Description and Remarks: NW CORNER: Monument and all references were gone.Used survey info. (Bk. 1I-p.81) and road plans and ROW info. to reestablish the location.Chiseled an "X" in concrete pavement as shown. N $\frac{1}{4}$ CORNER: Monument and all referenceswere gone. Used survey info. and road plans and ROW info. (as noted above) toreestablish the location. Set rerod as noted below.

PLAN - VIEW

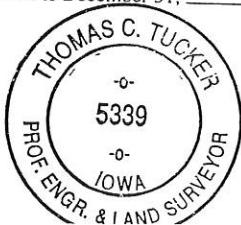
(Show a minimum of three reference ties to durable physical objects, relevant monuments and physical conditions that will enable recovery of the corner.)



I hereby certify that the survey work was completed and this land surveying document was prepared by me or under my direct personal supervision and that I am a duly registered land surveyor under the laws of the state of Iowa

Signature: Thomas C. TuckerName typed or printed: Thomas C. TuckerDate: 9/11/06 Reg. No. 5339My registration renewal date is December 31, 2007

SEAL



Corners	Section	Twp	Range
NW, N $\frac{1}{4}$	15	84N	4E



Document 06-4670

Book 2 Page 497 Type 15 001 Pages 1

Date 12/08/2006 Time 1:50 PM

Rec Amt \$7.00

ARLENE SCHAUF, RECORDER
JACKSON COUNTY IOWA

Prepared by Thomas C. Tucker, L.S., 3851 Eagle Hts., Clinton, IA 52732 (563-242-5392)

SLSI 9-94

UNITED STATES PUBLIC LAND SURVEY CORNER CERTIFICATE

OF

Land Survey Monuments situated in Section 15, Township 84 N, Range 4E, of the Fifth Principal Meridian, JACKSON County, Iowa.
Previously recorded in NA (book, page, document number, etc.) in County Recorder's Office.

(Show reason for preparing this certificate, the evidence and detailed procedures used in establishing the corner positions and monumentation found or placed.)

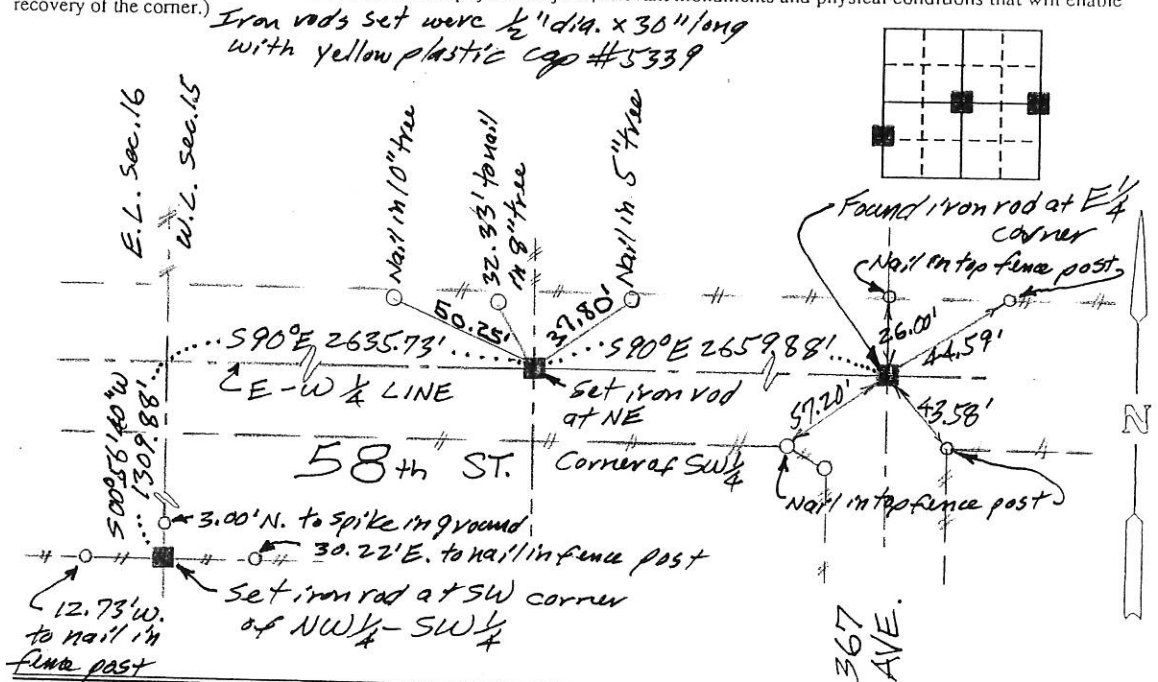
Monument Description and Remarks: For Thillman survey.

SW corner of NW 1/4-SW 1/4: Found no monument. Using fence date set iron rod at corner. NE corner of SW 1/4: Found no monument. Set iron rod in line with fence to the north and on line with E 1/4 & W 1/4 corners. Lined up quite well with existing road bed.

E 1/4 corner: Found iron rod and accepted same.

PLAN - VIEW

(Show a minimum of three reference ties to durable physical objects, relevant monuments and physical conditions that will enable recovery of the corner.)



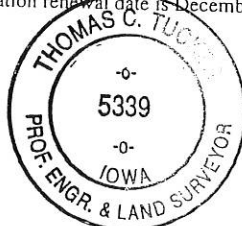
I hereby certify that the survey work was completed and this land surveying document was prepared by me or under my direct personal supervision and that I am a duly registered land surveyor under the laws of the state of Iowa

Signature: Thomas C. Tucker

Name typed or printed:

Date: 10/31/06 Reg. No. 5339My registration renewal date is December 31, 2007

SEAL



Corners	List Corners to be Indexed	Section	Twp	Range
E 1/4,	15	84N	4E	
NE corner of SW 1/4				
SW corner of NW 1/4-SW 1/4				