

UNITED STATES PUBLIC LAND SURVEY CORNER CERTIFICATE

SLSI 9-94

OF

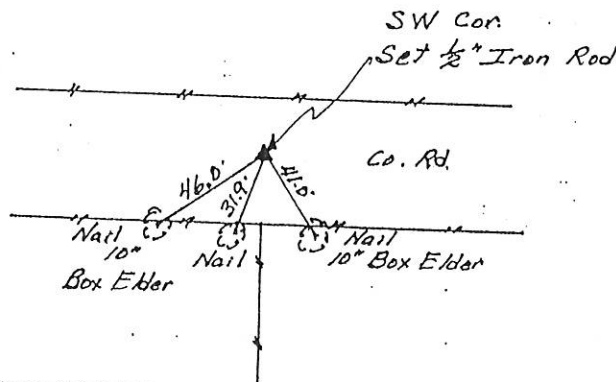
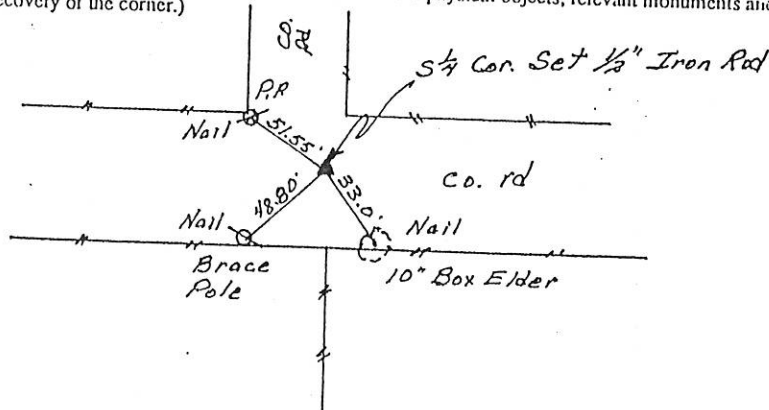
Land Survey Monuments situated in Section 10, Township 84N, Range 4E, of the Fifth Principal Meridian, Jackson County, Iowa.
Previously recorded in none found in County Recorder's Office.
(book, page, document number, etc.)

(Show reason for preparing this certificate, the evidence and detailed procedures used in establishing the corner positions and monumentation found or placed.)

Monument Description and Remarks: We found no evidence of existing monuments.
We did find and use existing fence lines to establish both corners

PLAN - VIEW

(Show a minimum of three reference ties to durable physical objects, relevant monuments and physical conditions that will enable recovery of the corner.)



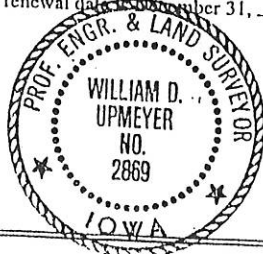
I hereby certify that the survey work was completed and this land surveying document was prepared by me or under my direct personal supervision and that I am a duly registered land surveyor under the laws of the state of Iowa

Signature: William D. Upmeyer
Name typed or printed: William D. Upmeyer

Date: 6-26-96 Reg. No. 2869

My registration renewal date is December 31, 1997

SEAL



Corners	List Corners to be Indexed	Section	Twp	Range
S $\frac{1}{4}$	10	84N	4E	
SW	10	84N	4E	

FILE NO. 003810
BOOK 1 PAGE 281

1996 JUL -3 PM 2:52

SHIRLY RITEHOUR
JACKSON COUNTY, IOWA
RECORDER

Jul 6 96

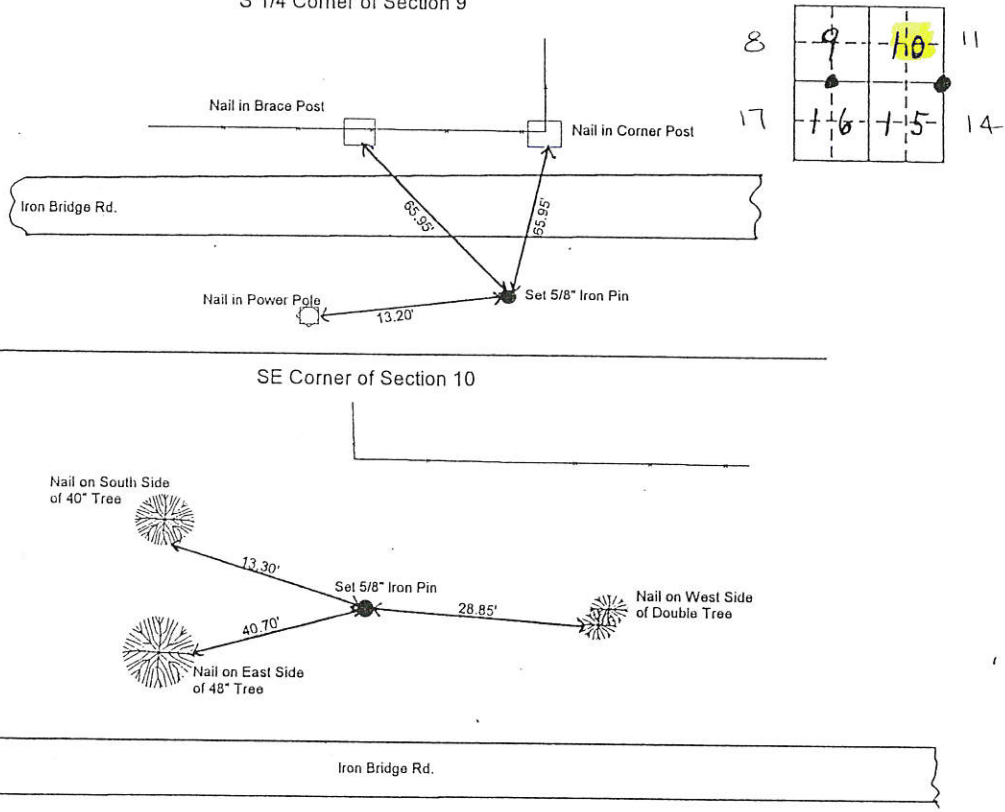
Land Survey Monuments situated in Section 9 and 10, Township 84 N, Range 4 E, of the Fifth Principal Meridian, Jackson County, Iowa.
 Previously recorded in Not Applicable in County Recorder's Office.
 (look, page, document number, etc.)

(Show reason for preparing this certificate, the evidence and detailed procedures used in establishing the corner positions and monumentation found or placed.)
 Monument Description and Remarks: The S.E. Corner of Section 9 and the S 1/4 Corner of Section 10 were found using existing ties. The line defined by these two points was extended and the intersection of this line with existing fence lines was used to set the South 1/4 Corner of Section 9 and the Southeast Corner of Section 10.

PLAN - VIEW

(Show a minimum of three reference ties to durable physical objects, relevant monuments and physical conditions that will enable recovery of the corner.)

S 1/4 Corner of Section 9



I hereby certify that the survey work was completed and this certificate was prepared by me or under my direct personal supervision and that I am a duly registered land surveyor under the laws of the state of Iowa.
 Signature: James L. Egger
 Name typed or printed: JAMES L. EGGER P.E. & L.S.
 Date: JAN. 15, 1997 Reg. No. 7983



SEAL

Corners	List Corners to be Indexed	Section	Twp	Range
S 1/4	9	84 N	4E	
S.E.	10	84 N	4 E	

FILE NO. **97 183**
 100-1-302

1997 JAN 24 AM 10:49

SHIRLY FOTENHOUR
 JACKSON COUNTY, IOWA
 RECORDER
Jul 6 02

7-21-00 see also corner certificate # 00-3252 bk. 1 pg. 441