

UNITED STATES PUBLIC LAND SURVEY CORNER CERTIFICATE

OF

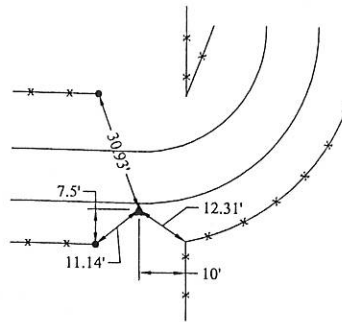
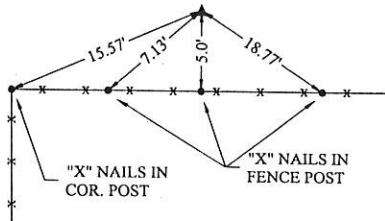
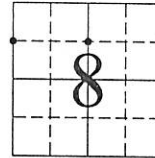
Survey Monuments situated in Section 8, Township 86 N., Range 1 E., of the Fifth Principal Meridian, JACKSON County, Iowa.
 previously recorded in NOT PREVIOUSLY RECORDED in County Recorder's Office.
 (book, page, document number, etc.)

(Show reason for preparing this certificate, the evidence and detailed procedures used in establishing the corner positions and monumentation found or placed.)

Monument Description and Remarks: 1) N.W. COR., S.W. 1/4, N.W. 1/4 - SET CAPPED PIN ON LINE BETWEEN
W. 1/4 COR. & N.W. COR. SEC., EQUIDISTANT FROM EACH. 2) N.E. COR., S.E. 1/4, N.W. 1/4 - SET CAPPED
PIN ON LINE BETWEEN CENTER OF SECTION & N. 1/4 COR., EQUIDISTANT FROM EACH.

PLAN - VIEW

(Show a minimum of three reference ties to durable physical objects, relevant monuments and physical conditions that will enable recovery of the corner.)



1) N.W. COR., S.W. 1/4, N.W. 1/4 SEC. 8-86-1 E.

2) N.E. COR., S.E. 1/4, N.W. 1/4 SEC. 8-86-1 E.

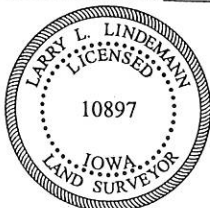
I hereby certify that the survey work was completed and this land surveying document was prepared by me or under my direct personal supervision and that I am a duly licensed land surveyor under the laws of the state of Iowa.

Signature: *[Signature]*

Name typed or printed: Larry L. Lindemann - C&L LAND SURVEYING
P.O. BOX 2666, DAVENPORT, IA 52809-2666

Date: 4/17/03 License No. 10897

My license renewal date is December 31, 2003



List Corners to be Indexed			
Corners	Section	Twp	Range
N.W. COR.	8	86 N.	1 E.
S.W. 1/4, N.W. 1/4			
N.E. COR.	8	86 N.	1 E.
S.E. 1/4, N.W. 1/4			

FILE NO. 03-2087
 PAGE 194
 03 APR - 7 PM 12:03
 PHYLLIS M. GERLACH
 JACKSON COUNTY, IOWA
 RECORDER
Fee \$6.00

UNITED STATES PUBLIC LAND SURVEY CORNER CERTIFICATE

OF

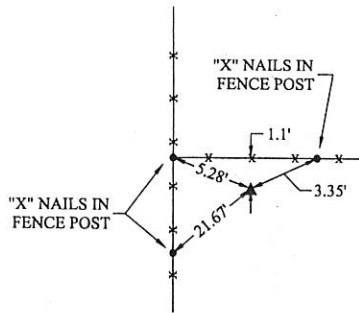
Survey Monuments situated in Section 8, Township 86 N., Range 1 E., of the Fifth Principal Meridian, JACKSON County, Iowa.
 Previously recorded in NOT PREVIOUSLY RECORDED in County Recorder's Office.
 (book, page, document number, etc.)

(Show reason for preparing this certificate, the evidence and detailed procedures used in establishing the corner positions and monumentation found or placed.)

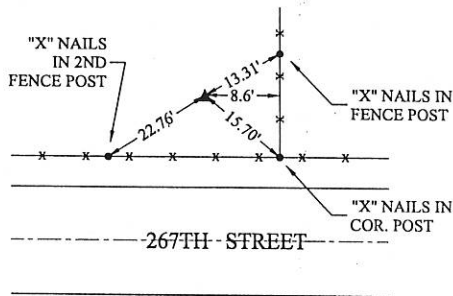
Monument Description and Remarks: 1) N.E. COR., N.W. 1/4, S.E. 1/4 - SET CAPPED PIN ON LINE BETWEEN
E. 1/4 COR. & CENTER OF SECTION, EQUIDISTANT FROM EACH. 2) S.E. COR., S.W. 1/4, S.E. 1/4 - SET
CAPPED PIN ON LINE BETWEEN S. 1/4 COR. & S.E. COR. OF SECTION, EQUIDISTANT FROM EACH.

PLAN - VIEW

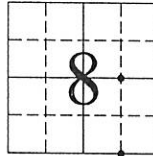
(Show a minimum of three reference ties to durable physical objects, relevant monuments and physical conditions that will enable recovery of the corner.)



1) N.E. COR., N.W. 1/4, S.E. 1/4 SEC. 8-86-1 E.



2) S.E. COR., S.W. 1/4, S.E. 1/4 SEC. 8-86-1 E.



I hereby certify that the survey work was completed and this land surveying document was prepared by me or under my direct personal supervision and that I am a duly licensed land surveyor under the laws of the state of Iowa.

Signature: [Signature]
 Name typed or printed: Larry L. Lindemann - C&L LAND SURVEYING
 P.O. BOX 2666, DAVENPORT, IA 52809-2666
 Date: 4/17/03 License No. 10897

My license renewal date is December 31, 2003



List Corners to be Indexed

Corners	Section	Twp	Range
N.E. COR.	8	86 N.	1 E.
N.W. 1/4, S.E. 1/4			
S.E. COR.	8	86 N.	1 E.
S.W. 1/4, S.E. 1/4			

FILE NO. 03-2088
 PAGE 147
 03 APR - 7 PM 12:03
 PHYLLIS M. GERLACH
 JACKSON COUNTY, IOWA
 RECORDER
 Fee \$ 6.00

UNITED STATES PUBLIC LAND SURVEY CORNER CERTIFICATE

OF

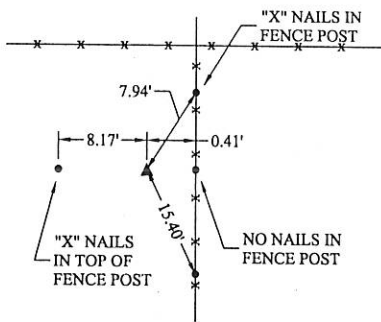
Survey Monuments situated in Section 8, Township 86 N., Range 1 E., of the Fifth Principal Meridian, JACKSON County, Iowa.
 previously recorded in NOT PREVIOUSLY RECORDED in County Recorder's Office.
 (book, page, document number, etc.)

(Show reason for preparing this certificate, the evidence and detailed procedures used in establishing the corner positions and monumentation found or placed.)

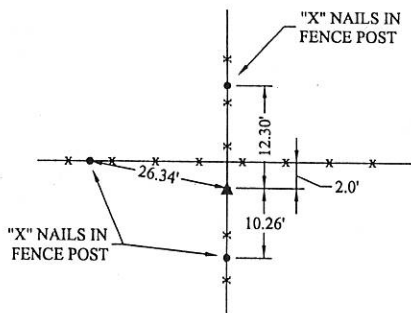
Monument Description and Remarks: 1) W. 1/4 COR. - SET CAPPED PIN AT INTERSECTION OF FENCES
 NORTH - SOUTH AND EAST - WEST. 2) E. 1/4 COR. - SET CAPPED PIN AT INTERSECTION OF FENCES
 NORTH - SOUTH AND EAST - WEST. 3) CENTER OF SECTION - SET CAPPED PIN AT INTERSECTION OF
 LINE BETWEEN EAST & WEST 1/4 CORNERS AND NORTH - SOUTH FENCE RUNNING SOUTH TO
 SOUTH 1/4 CORNER.

PLAN - VIEW

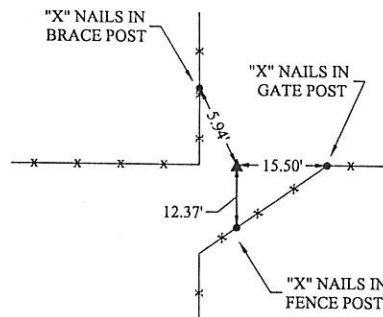
(Show a minimum of three reference ties to durable physical objects, relevant monuments and physical conditions that will enable recovery of the corner.)



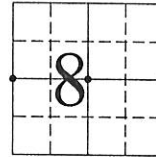
1) W. 1/4 COR. SEC. 8-86-1 E.



3) CENTER SEC. 8-86-1 E.



2) E. 1/4 COR. SEC. 8-86-1 E.



I hereby certify that the survey work was completed and this land surveying document was prepared by me or under my direct personal supervision and that I am a duly licensed land surveyor under the laws of the state of Iowa.

Signature: [Signature]
 Name typed or printed: Larry L. Lindemann - C&L LAND SURVEYING
 P.O. BOX 2666, DAVENPORT, IA 52809-2666
 Date: 4/17/02 License No. 10897

My license renewal date is December 31, 2003



List Corners to be Indexed			
Corners	Section	Twp	Range
W. 1/4 COR.	8	86 N.	1 E.
CENTER OF SECTION	8	86 N.	1 E.
E. 1/4 COR.	8	86 N.	1 E.

FILE NO. 03-2089
 BOOK 2 PAGE 188
 03 APR - 7 PM 12:03
 PHYLLIS M. GERLACH
 JACKSON COUNTY, IOWA
 RECORDER
 Fee \$ 6.00

UNITED STATES PUBLIC LAND SURVEY CORNER CERTIFICATE

OF

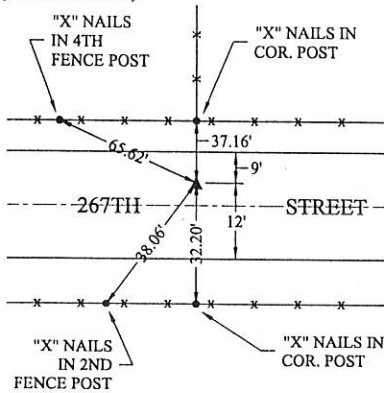
Survey Monuments situated in Section 8, Township 86 N., Range 1 E., of the Fifth Principal Meridian, JACKSON County, Iowa.
 Previously recorded in NOT PREVIOUSLY RECORDED in County Recorder's Office.
 (book, page, document number, etc.)

(Show reason for preparing this certificate, the evidence and detailed procedures used in establishing the corner positions and monumentation found or placed.)

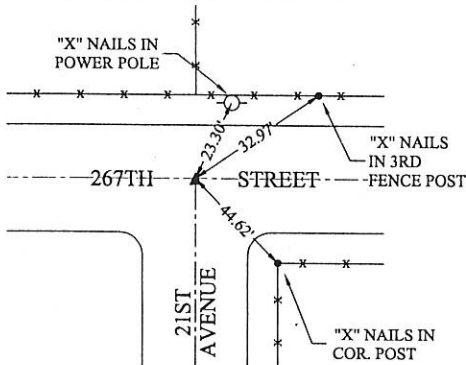
Monument Description and Remarks: 1) S.W. COR. - SET CAPPED PIN ON CENTERLINE OF EAST - WEST ROAD AT INTERSECTION OF FENCES TO NORTH & SOUTH. 2) S.E. COR. - SET CAPPED PIN ON CENTERLINE OF EAST - WEST ROAD AT INTERSECTION OF FENCE LINE TO NORTH - ALSO FALLS ON CENTERLINE OF ROAD TO SOUTH. 3) S. 1/4 COR. - SET CAPPED PIN ON LINE BETWEEN S.W. COR. & S.E. COR. AT POINT OF INTERSECTION WITH FENCE LINE TO NORTH. PIN FALLS 36' NORTH OF NORTH R.O.W. FENCE.

PLAN - VIEW

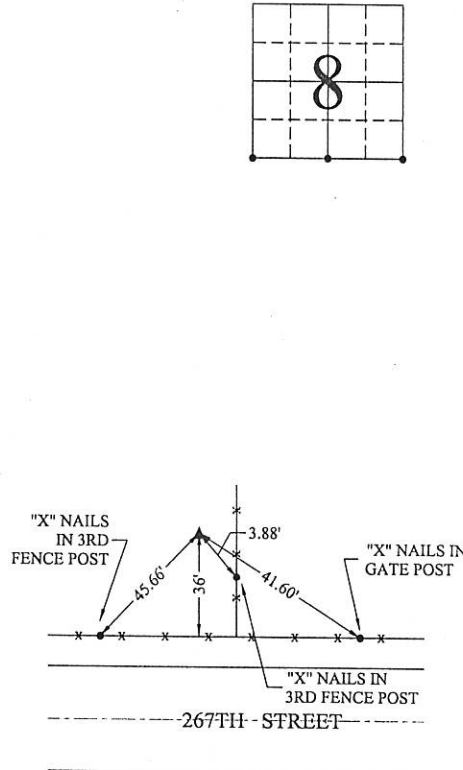
(Show a minimum of three reference ties to durable physical objects, relevant monuments and physical conditions that will enable recovery of the corner.)



1) S.W. COR., S.W. 1/4 SEC. 8-86-1 E.



2) S.E. COR., S.E. 1/4 SEC. 8-86-1 E.



3) S. 1/4 COR. SEC. 8-86-1 E.

I hereby certify that the survey work was completed and this land surveying document was prepared by me or under my direct personal supervision and that I am a duly licensed land surveyor under the laws of the state of Iowa.

Signature:

Name typed or printed: Larry L. Lindemann - C&L LAND SURVEYING
 P.O. BOX 2666, DAVENPORT, IA 52809-2666

Date: 4/17/02 License No. 10897

My license renewal date is December 31, 2003

S:



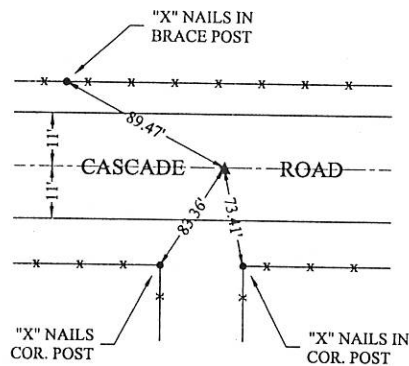
List Corners to be Indexed

Corners	Section	Twp	Range
S.W. COR., S.W. 1/4	8	86 N.	1 E.
S.E. COR., S.E. 1/4	8	86 N.	1 E.
S. 1/4 COR.	8	86 N.	1 E.

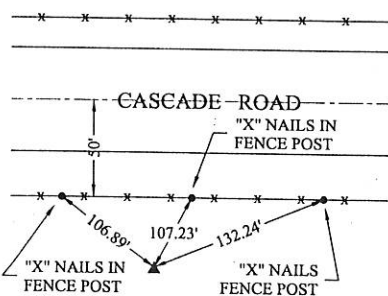
FILE NO. 03-2090
 BOOK 2 PAGE 149
 03 APR - 7 PM 12:03
 PHYLLIS M. GERLACH
 JACKSON COUNTY, IOWA
 RECORDER
 fee \$6.00

Monument Description and Remarks: 1) N.W. COR. - CUT "X" W/P.K. NAIL ON LINE FROM S.W. COR. THROUGH W. 1/4 COR. EXTENDED NORTH TO CENTERLINE COUNTY HIGHWAY D-61 SHOWN AS SEC. LINE ON ROAD PLANS. 2) N. 1/4 COR. - SET CAPPED PIN ON LINE FROM S. 1/4 COR. TO CENTER OF SECTION EXTENDED NORTH TO CENTERLINE OF COUNTY HIGHWAY D-61 EXTENDED EAST. 3) N.E. COR. - SET CAPPED PIN ON LINE FROM S.E. COR. TO E. 1/4 EXTENDED NORTH TO INTERSECT LINE FROM N. 1/4 COR. THROUGH POINTS ON EAST - WEST ANCIENT FENCE.

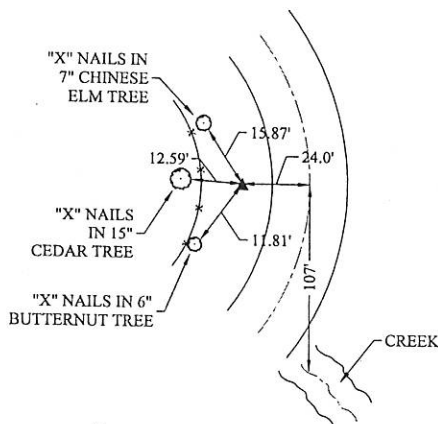
(Show a minimum of three reference ties to durable physical objects, relevant monuments and physical conditions that will enable recovery of the corner.)



1) N.W. COR., N.W. 1/4 SEC. 8-86-1 E.



2) N. 1/4 COR. SEC. 8-86-1 E.
FALLS IN OPEN PASTURE.

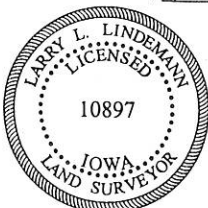


3) N.E. COR., N.E. 1/4 SEC. 8-86-1 E.

I hereby certify that the survey work was completed and this land surveying document was prepared by me or under my direct personal supervision and that I am a duly licensed land surveyor under the laws of the state of Iowa.

Signature: [Signature]
Name typed or printed: Darryl L. Lindemann - C&L LAND SURVEYING
P.O. BOX 2666, DAVENPORT, IA 52809-2666
Date: 4/17/09 License No. 10897

My license renewal date is December 31, 2003



List Corners to be Indexed

Corners	Section	Twp	Range
N.W. COR. N.W. 1/4	8	86 N.	1 E.
N. 1/4 COR.	8	86 N.	1 E.
N.E. COR. N.E. 1/4	8	86 N.	1 E.

FILE NO 03-209
 03 APR -7 PM12:04
 PHYLLIS H. GERLACH
 JACKSON COUNTY, IOWA
 RECORDED
file *to 6.00*