



Document 09-322

Book 2 Page 656 Type 15 001 Pages 1  
Date 1/29/2009 Time 2:39 PM  
Rec Amt \$7.00

ARLENE SCHAUF, RECORDER/REGISTRAR  
JACKSON COUNTY IOWA

PREPARED BY: MICHAEL J. WEBER, WEBER SURVEYING, LLC, 26789 46TH AVE, BERNARD, IA 52032 (563) 879-4173

## UNITED STATES PUBLIC LAND SURVEY CORNER CERTIFICATE OF

LAND SURVEY MONUMENTS SITUATED IN SECTION 36, TOWNSHIP 86 NORTH, RANGE 1 EAST  
OF THE FIFTH PRINCIPAL MERIDIAN, JACKSON COUNTY, IOWA.  
PREVIOUSLY RECORDED NONE UNLESS OTHERWISE NOTED

(Book, page, document number, etc.)

(Show reason for preparing this certificate, the evidence and detailed procedures used in establishing the corner positions and monumentation found or placed.)

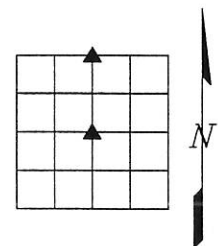
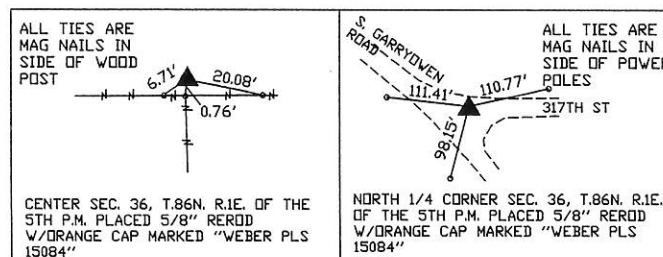
Monument Description and Remarks:

-CENTER SEC. 36, T.86N. R.1E. OF THE 5TH P.M. PLACED 5/8" REROD W/ORANGE CAP MARKED "WEBER PLS 15084", ESTABLISHED CORNER AT THE INTESECTION OF OCCUPATION FENCELINES RUNNING EAST, WEST & SOUTH.

-NORTH 1/4 CORNER SEC. 36, T.86N. R.1E. OF THE 5TH P.M. PLACED 5/8" REROD W/ORANGE CAP MARKED "WEBER PLS 15084" ESTABLISHED CORNER AT THE INTERSECTION OF THE FENCELINE NORTH AND THE SOUTH LINE EXTENDED WEST OF THE PLAT SHOWN IN PLAT BOOK 1-F PAGE 94.

(Show a minimum of three reference ties to durable physical objects, relevant monuments and physical conditions that will enable recovery of the corner.)

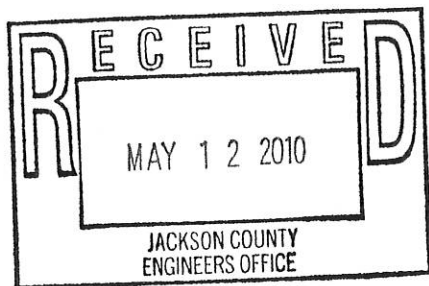
### PLAN - VIEW



DWG. NO. KNUTH

	I HEREBY CERTIFY THAT THIS LAND SURVEYING DOCUMENT WAS PREPARED AND THE RELATED SURVEY WORK WAS PERFORMED BY ME OR UNDER MY DIRECT PERSONAL SUPERVISION AND THAT I AM A DULY LICENSED LAND SURVEYOR UNDER THE LAWS OF THE STATE OF IOWA.		List Corners to be Indexed	
	<i>Michael J. Weber</i> January 21, 2009 (DATE) MICHAEL J. WEBER LICENSE NUMBER 15084 MY LICENSE RENEWAL DATE IS DECEMBER 31, 2009 SHEETS COVERED BY THIS SEAL: THIS SHEET		Corner	Sec Twp Range
			NORTH 1/4 CENTER	36 86N 1E 36 86N 1E

Book 2 Page 656



Jones County Engineer's Office  
P.O. Box 368  
Anamosa, Iowa 52205  
ATTN: Clarence J. Walton, LS

Clark Schloz, P.E.  
County Engineer  
Jackson County, Iowa  
Jackson County Courthouse  
201 West Platt Street  
Maquoketa, Iowa 52060

RE: Section Corner Certificates and attending photos

Dear Clark:

Enclosed please find a copy of the Section Corner Certificates that we recorded as a document here in Jones County. Also, we took some photos to aid in following the certificate's narratives.

If you, or your staff have any questions, please call me, I am at your service. Thank you for your kind attention to this.

Sincerely,

Clarence J. Walton

Jones County  
Marie Krutzfield, Recorder  
Fee Book 2010 1018

04/23/2010 @0231PM  
ZSC SEC COR CERT # Pages: 4  
Book: Page: \$0.00  
Total Fees:

COPY

PREPARED BY  
CLARENCE J. WALTON, JONES COUNTY ENGINEER'S OFFICE, 19501 HWY. 64, ANAMOSA, IOWA, 52205 (319) 462-3785

# COVER SHEET

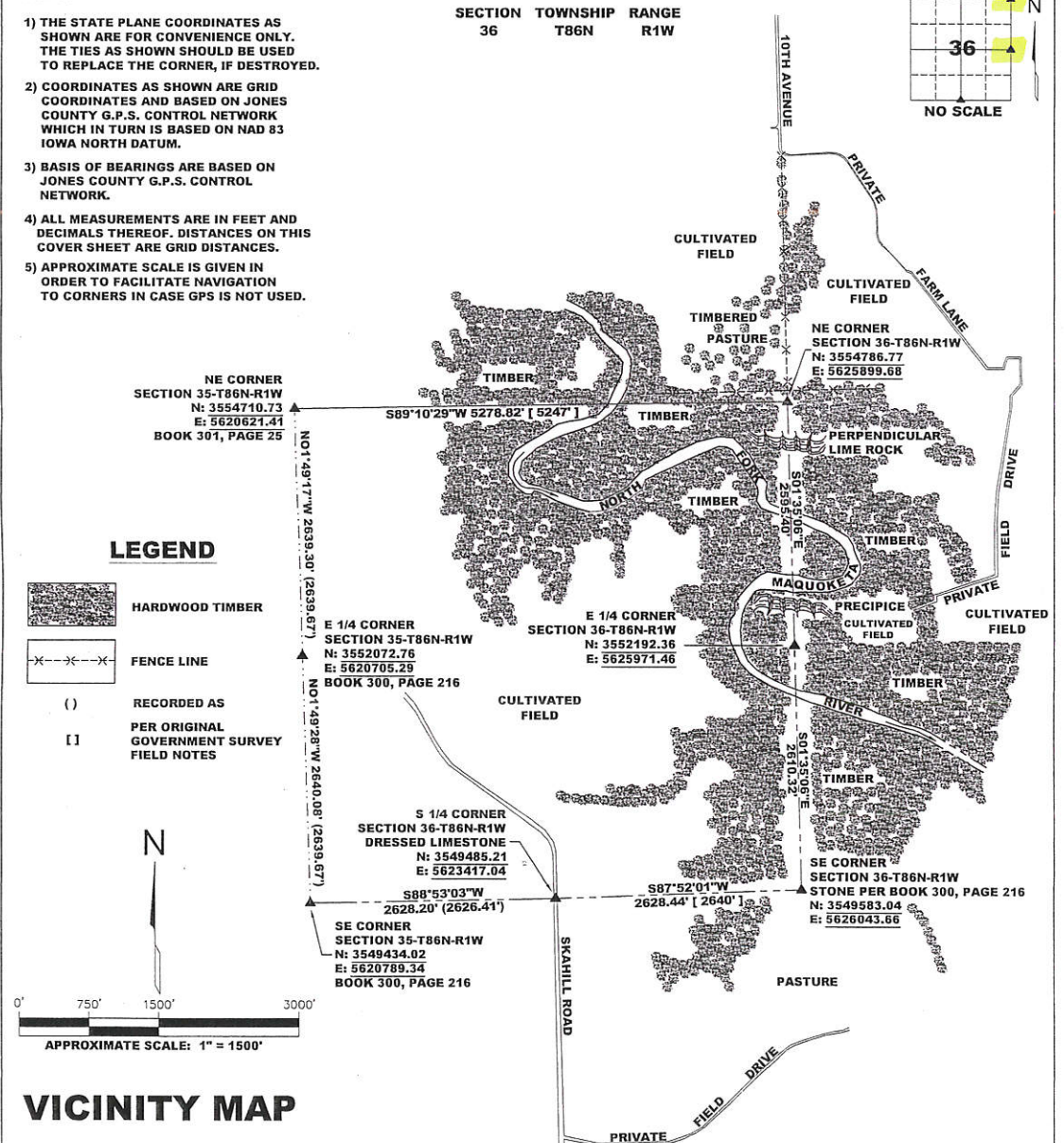
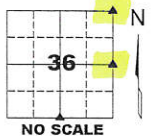
## UNITED STATES PUBLIC LAND SURVEY CORNER CERTIFICATE

### LAND SURVEY MONUMENTS SITUATED IN SECTION 36, TOWNSHIP 86 NORTH, RANGE 1 WEST OF THE 5TH PRINCIPAL MERIDIAN, JONES COUNTY, IOWA.

#### NOTES:

- 1) THE STATE PLANE COORDINATES AS SHOWN ARE FOR CONVENIENCE ONLY. THE TIES AS SHOWN SHOULD BE USED TO REPLACE THE CORNER, IF DESTROYED.
- 2) COORDINATES AS SHOWN ARE GRID COORDINATES AND BASED ON JONES COUNTY G.P.S. CONTROL NETWORK WHICH IN TURN IS BASED ON NAD 83 IOWA NORTH DATUM.
- 3) BASIS OF BEARINGS ARE BASED ON JONES COUNTY G.P.S. CONTROL NETWORK.
- 4) ALL MEASUREMENTS ARE IN FEET AND DECIMALS THEREOF. DISTANCES ON THIS COVER SHEET ARE GRID DISTANCES.
- 5) APPROXIMATE SCALE IS GIVEN IN ORDER TO FACILITATE NAVIGATION TO CORNERS IN CASE GPS IS NOT USED.

SECTION 36 TOWNSHIP 86N RANGE 1W



#### VICINITY MAP

PAGE 1 of 4



I hereby certify that this land surveying document and the related survey work was performed by me or under my direct personal supervision and that I am a duly registered Land Surveyor under the laws of the State of Iowa.  
Signed: *Clarence J. Walton* 4/23/10  
Clarence J. Walton, L.S.  
My Registration Renewal Date is December 31, 2011  
Iowa License Number 11310  
Pages or sheets covered by this seal: 1 of 1.

#### JONES COUNTY ENGINEER'S OFFICE



19501 HWY. 64, ANAMOSA, IOWA 52205  
(319) 462-3785



# UNITED STATES PUBLIC LAND SURVEY CORNER CERTIFICATE

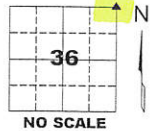
LAND SURVEY MONUMENTS SITUATED IN SECTION 36, TOWNSHIP 86 NORTH,  
RANGE 1 WEST OF THE 5TH PRINCIPAL MERIDIAN, JONES COUNTY, IOWA.

STATE PLANE COORDINATE  
NAD 83 IOWA NORTH  
N 3554786.77  
E 5625899.68

NOTES:

- 1) THE STATE PLANE COORDINATES AS SHOWN ARE FOR CONVENIENCE ONLY. THE TIES AS SHOWN SHOULD BE USED TO REPLACE THE CORNER, IF DESTROYED.
- 2) COORDINATES AS SHOWN ARE GRID COORDINATES AND BASED ON JONES COUNTY G.P.S. CONTROL NETWORK WHICH IN TURN IS BASED ON NAD 83 IOWA NORTH DATUM.
- 3) ALL MEASUREMENTS ARE IN FEET AND DECIMALS THEREOF.

CORNER SECTION TOWNSHIP RANGE  
NE CORNER 36 T86N R1W



SET 5/8" REBAR IN EAST-WEST FENCE  
SET STEEL FENCE POST WITH  
"SURVEY MARKER" SIGN  
NEXT TO PIN AS A WITNESS  
N: 3554818.26  
E: 5625830.47

TIMBERED PASTURE

CULTIVATED

SET PLASTIC SURVEY DISC  
OVER FOUND X'D NAILS IN  
WOODEN END POST

SET PLASTIC SURVEY DISC  
OVER FOUND X'D NAILS IN  
36" BURR OAK (*Quercus macrocarpa*)

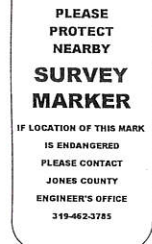
TIMBER

SET PLASTIC SURVEY DISC  
OVER FOUND X'D NAILS IN  
24" BLACK WALNUT (*Juglans nigra*)

CENTER 45" (10") WHITE OAK  
BEARING TREE (*Quercus alba*)  
STATE PLANE COORDINATES  
NAD 83 IOWA NORTH  
N 3554599.15  
E 5607465.96

SET STEEL FENCE POST  
W/YELLOW "SURVEY MARKER" SIGN  
ON EAST SIDE OF TREE AS A WITNESS

"SURVEY MARKER"  
SIGN



SURVEY DISC



"FOOT OF PERPDR  
(PERPENDICULAR)  
LIME ROCK 50' HIGH"

SE CORNER  
SECTION 36-T86N-R1W  
STONE PER BOOK 300, PAGE 216  
N: 3549583.04  
E: 5626043.66

LEGEND

- OPC ORANGE PLASTIC CAP  
( ) AS RECORDED IN  
BOOK 2, PAGE 354  
{ } AS RECORDED IN  
BOOK 2, PAGE 354  
[ ] PER ORIGINAL  
GOVERNMENT SURVEY  
FIELD NOTES

PAGE 2 of 4

PREVIOUSLY RECORDED IN BOOK 2, PAGE 354, JACKSON COUNTY RECORDER'S OFFICE AND IN BOOK 301, PAGE 25 IN THE JONES COUNTY, IOWA RECORDER'S OFFICE.

**MONUMENT DESCRIPTION AND HOW ESTABLISHED** FOUND 16"x14"x4" LIMESTONE STANDING ON EDGE, THE TOP 5" OF WHICH IS ABOVE PRESENT GROUND LEVEL. STONE'S LONG AXIS IS ORIENTED NORTH AND SOUTH. SCRAPED GROUND BELOW STONE FOR EVIDENCE OF ORIGINAL POST, NONE FOUND. SET TWO 5/8" REBAR W/ ORANGE PLASTIC CAPS #11310 AT THE NE AND SE CORNERS OF STONE TO PREVENT STONE FROM FALLING SIDWAYS AND FOR A MAGNETIC SIGNATURE. STONE IS IN CLOSE PROXIMITY TO FALLEN FENCE AND TO OLD CEDAR CORNER POST. A STEEL FENCE POST WITH A YELLOW JONES COUNTY "SURVEY MARKER" SIGN WAS SET APPROXIMATELY 8" EAST OF STONE AS A WITNESS POST. AS THERE IS NO RECORD OF THE STONE'S "PEDIGREE" WE RETRACED THE ORIGINAL GOVERNMENT SURVEY NOTES TO SEE IF THERE WAS ANY COLLABORATION OF EVIDENCE AS TO THE STONE'S POSITION IN REGARD TO THE GOVERNMENT NOTES. WE MEASURED A DISTANCE OF 62.70' TO THE CENTER OF A 45" WHITE OAK SW OF THE STONE WHICH AGREED WITH THE ORIGINAL GOVERNMENT SURVEY NOTES. ASSUMING THE EAST LINE OF SAID SECTION 36 (THE 5TH PRINCIPAL MERIDIAN, AS MONUMENTED BY FOUND STONES AT THE NE & SE CORNERS OF SAID SECTION 36) TO RUN TRUE NORTH (WHICH IS WHAT BURT RAN), THE BEARING TO THE CENTER OF THE BEARING TREE WAS S76°40'28"W. THE GOVERNMENT NOTES CALL FOR S76°W. NO SCARS WERE APPARENT WITHOUT LETTING THE IMAGINATION RUN AWAY. THE ORIGINAL GOVERNMENT NOTES RECITED THAT THE OAK WAS 10' IN DIAMETER (ca 1836). WITH THE PRESENT DIAMETER BEING 45", THE GROWTH RATE WAS AN AVERAGE OF 0.2" PER YEAR, THIS FALLS RIGHT IN LINE WITH THE NOMINAL GROWTH RATE FOR A WHITE OAK. WE WERE ALSO FORTUNATE TO HAVE A VERY DISTINCTIVE CALLED FOR NATURAL MONUMENT IN THE FORM OF THE "FOOT OF PERPDR (PERPENDICULAR-AUTHOR'S NOTE) LIME ROCK 50 FT. HIGH". THIS IS VERBATIM FROM THE ORIGINAL FIELD NOTES. WE MEASURED 46'1" FROM WHERE WE THOUGHT THE FOOT WAS AND FOUND WE WERE WITHIN ±4" OF WHAT THE GOVERNMENT NOTES SHOWED. THUS THE FOUND STONE'S LOCATION IS IN ALL LIKELIHOOD WHERE THE ORIGINAL SURVEYOR SET THE POST. QUITE LIKELY WHOEVER SET THE STONE HAD ACTUALLY REPLACED THE SECTION CORNER POST WITH THE STONE OR USED THE GOV'T FIELD NOTES.

FIELD BOOK 344, PAGE 78. DATE OF SURVEY: 10/9/09



I hereby certify that this land surveying document and the related survey work was performed by me or under my direct personal supervision and that I am a duly registered Land Surveyor under the laws of the State of Iowa.  
Signed: *Clarence J. Walton* 4/23/10  
Clarence J. Walton, L.S.  
My Registration Renewal Date is December 31, 2011  
Iowa License Number 11310  
Pages or sheets covered by this seal: 1 of 1.

- ☐ A. THERE IS NO CERTIFICATE FOR THE CORNER ON FILE WITH THE RECORDER OF THE COUNTY IN WHICH THE CORNER IS LOCATED.  
☐ B. THE CORNER MONUMENT HAS BEEN REPLACED OR MODIFIED.  
☐ C. THE SURVEYOR IN RESPONSIBLE CHARGE OF THE LAND SURVEYING ACCEPTS A CORNER POSITION THAT DIFFERS FROM THAT SHOWN IN THE PUBLIC RECORDS OF THE COUNTY IN WHICH THE CORNER IS LOCATED.  
☐ D. THE REFERENCE TIES REFERRED TO IN AN EXISTING PUBLIC RECORD NO LONGER EXIST.  
☒ E. EXISTING CORNER TIES UPDATED.

CORNERS TO BE INDEXED

CORNER	SECTION	TOWNSHIP	RANGE
NE CORNER	36	86N	1W
SE CORNER	25	86N	1W
NW CORNER	6	85N	1E
SW CORNER	31	85N	1E

JONES COUNTY ENGINEER'S OFFICE



19501 HWY. 64, ANAMOSA, IOWA 52205  
(319) 462-3785



## NE CORNER

### SECTION 36-T86N-R1W

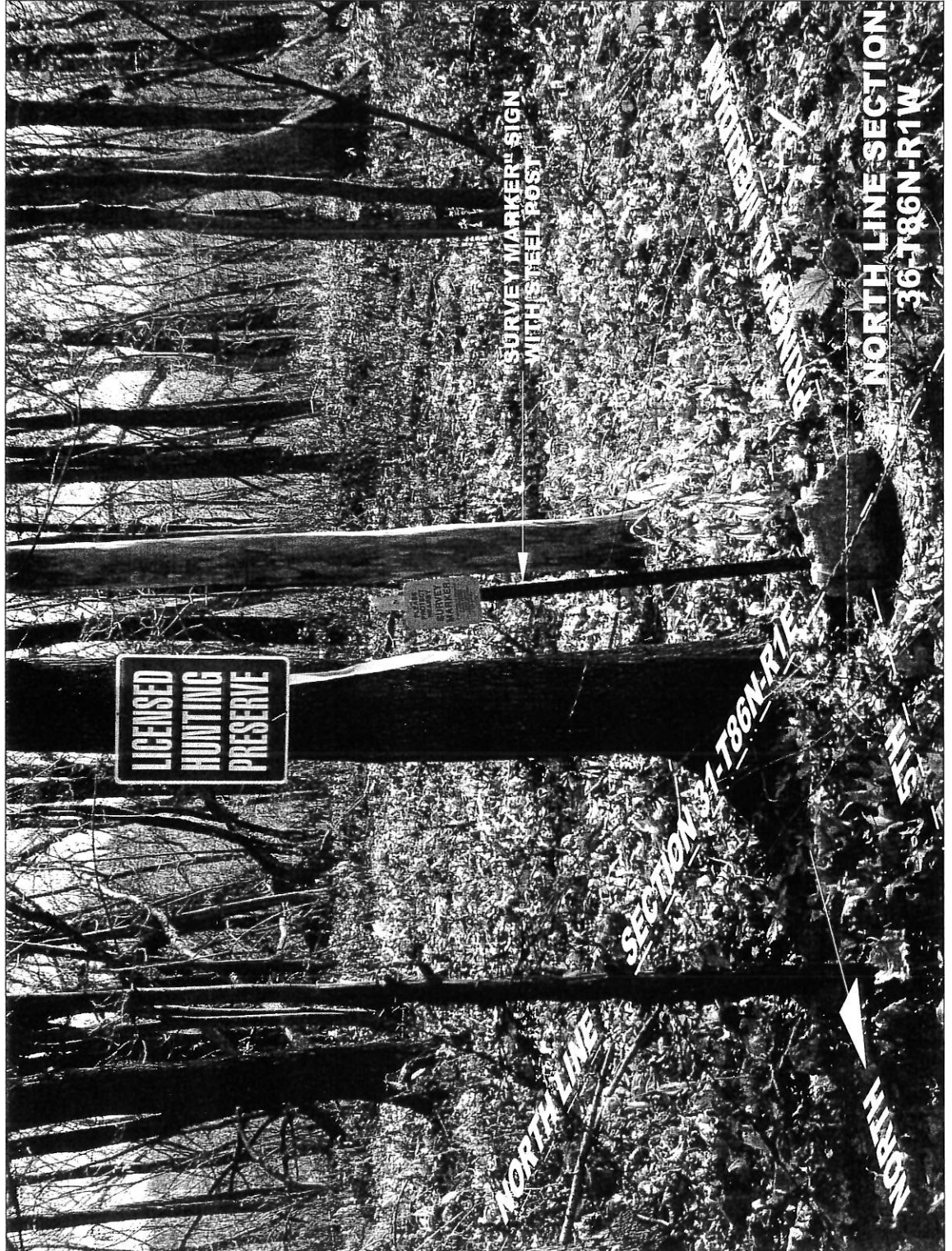
VIEW IS LOOKING SOUTHEAST, FOUND 16" X 14" X 4" LIMESTONE SET ON EDGE TO THE LEFT OF THE STONE, AN OLD RED CEDAR CORNER POST THAT WE LIFTED OFF THE GROUND AND SET UP CAN BE SEEN WITH WIRE RUNNING NORTH (LEFT) AND SOUTH (RIGHT) AND EAST. FENCE WIRE ALSO RUNS WEST BURIED UNDER LEAF AND TREE LITTER. THE LONG AXIS OF THE STONE IS ORIENTED NORTH-SOUTH. SEE FOLLOWING PAGE FOR DETAILED VIEW OF STONE.

## "SURVEY MARKER" SIGN

PLEASE  
PROTECT  
NEARBY

## SURVEY MARKER

IF LOCATION OF THIS MARK  
IS ENDANGERED  
PLEASE CONTACT  
JONES COUNTY  
ENGINEER'S OFFICE  
319-462-3785



# NE CORNER SECTION 36-T86N-R1W

VIEW IS LOOKING SOUTHEAST. 5/8" X 24" REBARS ARE PLACED TO PROTECT MONUMENT FROM BEING KNOCKED OVER. ORANGE PLASTIC CAPS (OPC) EMBOSSED WITH "JONES COUNTY LS 11310" WERE PLACED TO PROTECT LIVESTOCK/ PEOPLE FROM LAMING THEMSELVES ON SHARP REBAR TOPS AND FOR IDENTIFICATION OF SURVEYOR RESPONSIBLE FOR MONUMENT PERPETUATION. ALSO, THE BOTTOM OF THE STEEL POST THAT HAS A "SURVEY MARKER" SIGN ATTACHED TO IT CAN BE SEEN. IN THE IMMEDIATE FOREGROUND, AN OLD DOWNED FENCE RUNNING SOUTH TO THE NORTH WHERE IT IS SOON OBLITERATED DUE TO BULLDOZING ACTIVITY. THE LONG AXIS OF THE STONE IS ORIENTED NORTH-SOUTH.

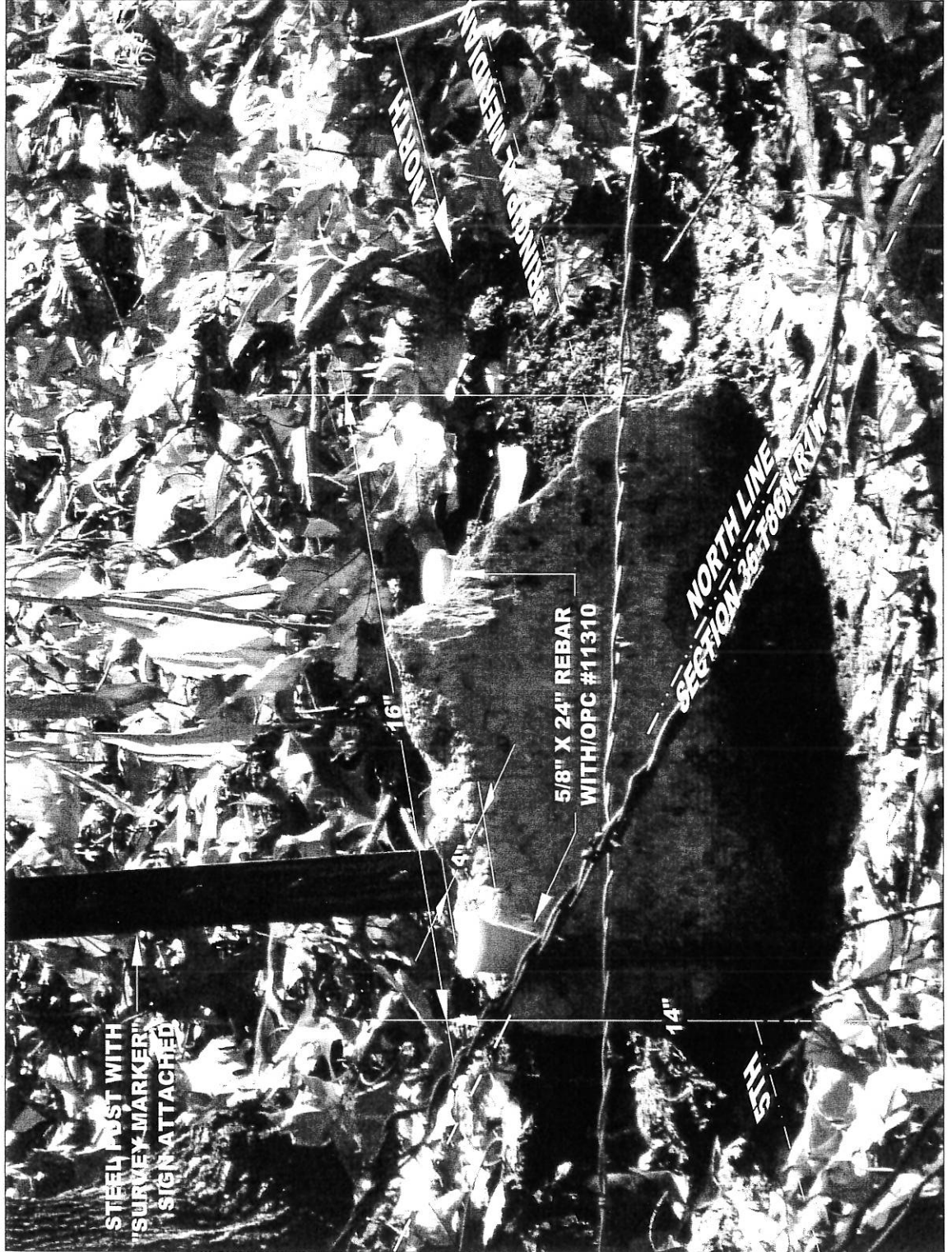
\*SEE SKETCH OF SIGN BELOW.

## "SURVEY MARKER" SIGN

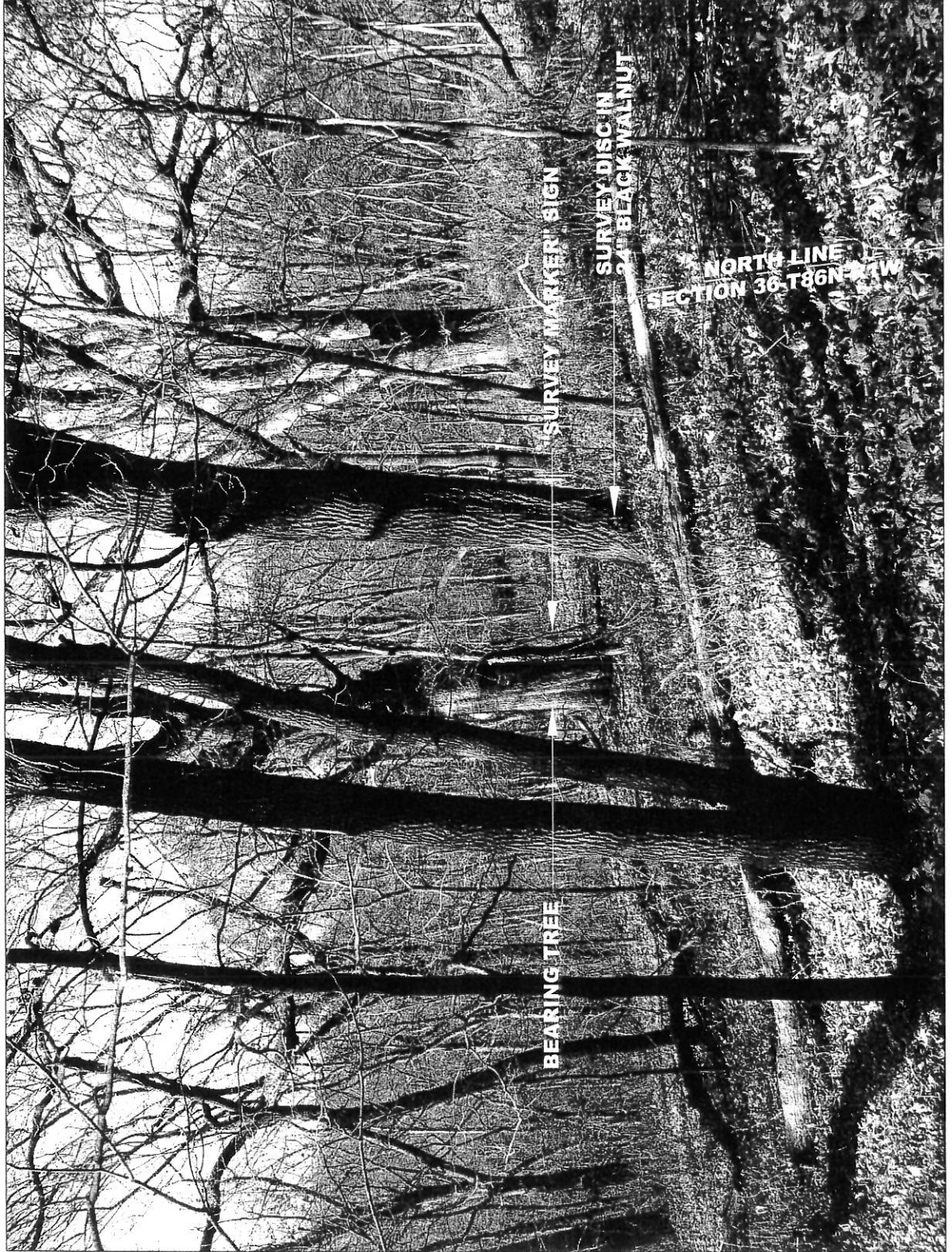
PLEASE  
PROTECT  
NEARBY

## SURVEY MARKER

IF LOCATION OF THIS MARK  
IS ENDANGERED  
PLEASE CONTACT  
JONES COUNTY  
ENGINEER'S OFFICE  
319-462-3785







**BEARING TREE FOR  
NE CORNER  
SECTION 36-T86N-R1W**

VIEW IS LOOKING WEST. CAMERA IS OVER THE STONE  
AT THE NE CORNER OF SECTION 36. ASSUMING THE  
EAST LINE OF SECTION 36 (THE 5<sup>TH</sup> PRINCIPAL  
MERIDIAN) AS MONUMENTED BY FOUND STONES AT  
THE SE CORNER OF SECTION 36 AND HERE AT THE NE  
CORNER TO RUN TRUE NORTH, THE BEARING AND  
DISTANCE FROM THE TOP CENTER OF THE FOUND  
STONE TO THE CENTER OF THE BEARING TREE WAS  
FOUND TO BE S76°40'28"W 92.70'. THIS COMPARES  
WELL WITH THE ORIGINAL GOVERNMENT SURVEY  
NOTES WHICH GIVE AN OUT BEARING AND  
DISTANCE AS S76°W 95 LINKS (92.70') NAD 83 (IOWA  
NORTH COORDINATES TO THE CENTER OF THE TREE  
ARE AS FOLLOWS: N3554599.15 E5607465.96

**SURVEY DISC**



**"SURVEY MARKER"  
SIGN**

**PLEASE  
PROTECT  
NEARBY**

**SURVEY  
MARKER**

IF LOCATION OF THIS MARK

IS ENDANGERED  
PLEASE CONTACT  
JONES COUNTY  
ENGINEER'S OFFICE  
319-462-3785



**NE CORNER**  
**SECTION 36-T86N-R1W**

VIEW IS LOOKING WEST-SOUTHWEST AT THE BEARING TREE, AS CAN BE SEEN BY THE BARK, THE TREE IS WHITE OAK (QUERCUS ALBA) AS COULD BE TOLD BY THE WHITE BARK PATCHES WELL WITH GROWTH RATE FOR THIS SPECIES.



**"SURVEY MARKER"  
SIGN**

**PLEASE  
PROTECT  
NEARBY  
SURVEY  
MARKER**

IF LOCATION OF THIS MARK  
IS ENDANGERED  
PLEASE CONTACT  
JONES COUNTY  
ENGINEER'S OFFICE  
319-462-3785

# UNITED STATES PUBLIC LAND SURVEY CORNER CERTIFICATE

LAND SURVEY MONUMENTS SITUATED IN SECTION 36, TOWNSHIP 86 NORTH,  
RANGE 1 WEST OF THE 5TH PRINCIPAL MERIDIAN, JONES COUNTY, IOWA.

STATE PLANE COORDINATE  
NAD 83 IOWA NORTH  
N 3552192.36  
E 5625971.46

NOTES:

- 1) THE STATE PLANE COORDINATES AS SHOWN ARE FOR CONVENIENCE ONLY. THE TIES AS SHOWN SHOULD BE USED TO REPLACE THE CORNER, IF DESTROYED.
- 2) COORDINATES AS SHOWN ARE GRID COORDINATES AND BASED ON JONES COUNTY G.P.S. CONTROL NETWORK WHICH IN TURN IS BASED ON NAD 83 IOWA NORTH DATUM.
- 3) ALL MEASUREMENTS ARE IN FEET AND DECIMALS THEREOF.
- 4) \* GRID DISTANCE, BASED ON JONES COUNTY G.P.S. CONTROL NETWORK.

LEGEND

- OPC ORANGE PLASTIC CAP  
( ) RECORDED AS  
[ ] PER ORIGINAL GOVERNMENT SURVEY FIELD NOTES  
T STEEL FENCE POST  
PAINTED FLUORESCENT PINK

"SURVEY MARKER" SIGN

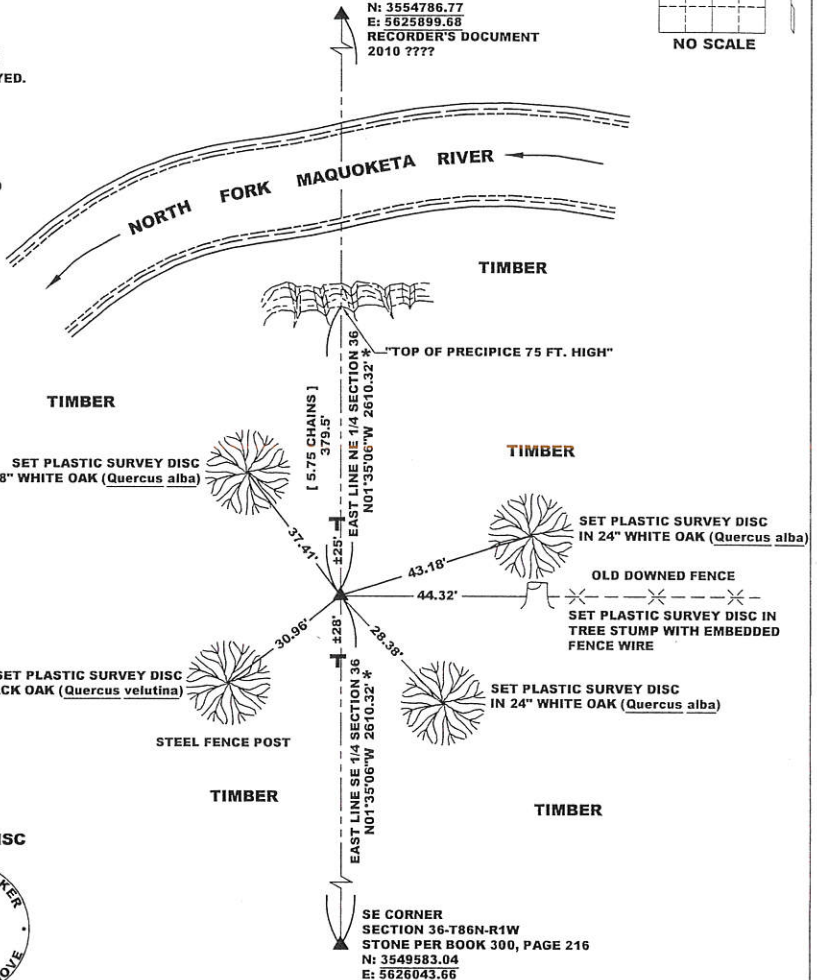
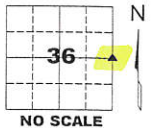
PLEASE  
PROTECT  
NEARBY  
**SURVEY  
MARKER**  
IF LOCATION OF THIS MARK  
IS ENDANGERED  
PLEASE CONTACT  
JONES COUNTY  
ENGINEER'S OFFICE  
319-462-3785

SURVEY DISC



CORNER SECTION TOWNSHIP RANGE  
E 1/4 CORNER 36 T86N R1W

NE CORNER  
SECTION 36-T86N-R1W  
N: 3554786.77  
E: 5625899.68  
RECORDER'S DOCUMENT  
2010 ?????



PAGE 3 of 4

PREVIOUSLY RECORDED IN N/A

MONUMENT DESCRIPTION AND HOW ESTABLISHED ORIGINAL GOVERNMENT FIELD NOTES STATE THAT NO POST WAS SET AT THE E 1/4 CORNER AS A 13" WHITE OAK SERVED AS A CORNER TREE. NO SIGN OF TREE COULD BE FOUND EITHER ON SURFACE OR BELOW. 1940 AERIAL PHOTO SHOWS ONLY SMALLER TREES IN THE AREA WHERE THE CORNER TREE WOULD HAVE BEEN. THE GOVERNMENT NOTES ALSO STATE THAT THE CORNER WAS 5.75 CHAINS (379.5 FEET) SOUTH OF THE "TOP OF A PRECIPICE 75 FT. HIGH" (VERBATIM FROM ORIGINAL GOVERNMENT FIELD NOTES. A 5/8" X 24" REBAR WITH AN ORANGE PLASTIC CAP #11310 WAS SET 379.5 FEET SOUTH OF THE TOP OF THE PRECIPICE (THIS POINT IS VERY DEFINITE) AND ON LINE BETWEEN A FOUND FOUND STONE AT THE SE CORNER OF SECTION 36-T86N-R1W AND A FOUND STONE AT THE NE CORNER OF SAID SECTION 36. THE CORNER, SO SET, FELL 7.46 FEET NORTH OF BEING EQUIDISTANT BETWEEN THE 2 FOUND STONES. A STEEL FENCE POST WITH A YELLOW JONES COUNTY "SURVEY MARKER" SIGN WAS SET NEXT TO THE SET SECTION CORNER AS A WITNESS. THERE WERE FLUORESCENT PINK PAINTED STEEL FENCE POSTS AND ANGLE IRONS SET ALONG NEAR THE SECTION LINE FROM THE SOUTH TO THE TOP OF THE LEFT BANK OF THE NORTH FORK OF THE MAQUOKETA RIVER TO THE NORTH. THESE POSTS WERE POSSIBLY SET TO MARK THE SECTION LINE DUE TO RECENT LOGGING ACTIVITY. EXCEPT FOR THE ORIGINAL GOVERNMENT SURVEYS, NO SURVEY RECORDS WERE FOUND TO EXPLAIN HOW THESE POSTS WERE SET.

FIELD BOOK 344, PAGE 68. DATE OF SURVEY: 4/21/10



I hereby certify that this land surveying document and the related survey work was performed by me or under my direct personal supervision and that I am a duly registered Land Surveyor under the laws of the State of Iowa.  
Signed: *Clarence J. Walton* 4/23/10  
Clarence J. Walton, L.S.  
My Registration Renewal Date is December 31, 2011  
Iowa License Number 11310  
Pages or sheets covered by this seal: 1 of 1.

- ☒ A. THERE IS NO CERTIFICATE FOR THE CORNER ON FILE WITH THE RECORDER OF THE COUNTY IN WHICH THE CORNER IS LOCATED.  
☐ B. THE CORNER MONUMENT HAS BEEN REPLACED OR MODIFIED.  
☐ C. THE SURVEYOR IN RESPONSIBLE CHARGE OF THE LAND SURVEYING ACCEPTS A CORNER POSITION THAT DIFFERS FROM THAT SHOWN IN THE PUBLIC RECORDS OF THE COUNTY IN WHICH THE CORNER IS LOCATED.  
☐ D. THE REFERENCE TIES REFERRED TO IN AN EXISTING PUBLIC RECORD NO LONGER EXIST.  
☐ E. EXISTING CORNER TIES UPDATED.

CORNERS TO BE INDEXED

CORNER	SECTION	TOWNSHIP	RANGE
E 1/4 CORNER	36	86N	1W
W 1/4 CORNER	31	86N	1E

JONES COUNTY ENGINEER'S OFFICE



19501 HWY. 64, ANAMOSA, IOWA 52205  
(319) 462-3785



**SIDE VIEW OF PRECIPICE  
NORTH OF E 1/4 CORNER  
SECTION 36-T86N-R1W**

VIEW IS LOOKING ESELY ACROSS THE 5<sup>TH</sup> PRINCIPAL  
MERIDIAN. FALLEN ROCK IN FOREGROUND HIDES THE  
FULL VIEW OF THE VERTICAL FACE. PHOTO WAS  
TAKEN ABOUT 1/4 THE WAY UP THE BLUFF. THIS IS  
ROUGHLY 150 FEET WNW-LY FROM THE 5<sup>TH</sup> P.M.





**VIEW OF PRECIPICE  
NORTH OF E 1/4 CORNER  
SECTION 36-T86N-R1W**

THE VIEW OF THE NORTH FACE OF THE PRECIPICE 575 CHAINS NORTH OF THE E 1/4 CORNER OF SECTION 36-T86N-R1W. YOU ARE LOOKING SW. LY ACROSS THE 5<sup>TH</sup> PRINCIPAL MERIDIAN. THE BASE OF THE PRECIPICE IS HIDDEN FROM VIEW BY TALUS THAT HAS SLUMPED. CLIMBING WAS DIFFICULT DUE TO UNSURE FOOTING.



**NEAR TOP OF PRECIPICE  
NORTH OF E 1/4 CORNER  
SECTION 36-T86N-R1W**

VIEW IS LOOKING NW-LY ACROSS THE 5<sup>TH</sup> PRINCIPAL MERIDIAN. THE STEEL FENCE POST IN THE NEAR FOREGROUND IS ON THE 5<sup>TH</sup> P.M. AND THE RIBBON DANGLED IN THE TREE SLIGHTLY TO THE RIGHT AND FURTHER DOWN HILL IS ALSO ON THE 5<sup>TH</sup> P.M. THE RIBBON IS NEAR THE VERTICAL DROP. THIS IS WHERE WILLIAM AUSTIN BURT'S CREW CAME TO THE TOP OF PRECIPICE 75 FT HIGH (HIS WORDS) 5.75 CHAINS NORTH OF THE E 1/4 CORNER OF SECTION 36-T86N-R1W.



NOTE RIBBON  
IN TREES

5<sup>TH</sup> PRINCIPAL MERIDIAN





**VIEW OF PRECIPICE  
NORTH OF E 1/4 CORNER  
SECTION 36-T86N-R1W**

LOOKING NORTH ALONG THE 5TH PRINCIPAL MERIDIAN SHOWING THE E 1/4 CORNER OF SECTION 36-T86N-R1W. THE FLUORESCENT PINK PAINTED STEEL FENCE POST IS THE CORNER OF THE E 1/4 CORNER. THE CORNER WAS SET BY THE SURVEYOR IN 1940. THE CORNER WAS SET ON THE LEFT BANK OF THE NORTH FORK OF THE MACON RIVER TO THE SOUTH OF THE LEFT BANK OF THE RIVER TO THE NORTH. THE ORIGINAL CORNER WAS A 13 INCH WHITE OAK AND SERVED AS A CORNER TREE. NO SIGN OF THE TREE OR ANY REMNANTS COULD BE FOUND. AERIAL PHOTOS FROM 1940 SHOW NO REMNANTS OF THE CORNER TREE. THE CORNER WAS SET BY THE SURVEYOR WITH AN ORANGE PLASTIC CAP #11310 ON A LINE BETWEEN FOLD STONES AT THE NE CORNER OF SAID SECTION 36 AND THE SE CORNER OF SAID SECTION. WE SET THE CORNER PER THE ORIGINAL GOVERNMENT FIELD NOTES WHICH CALLED THE CORNER TO BE 5.75 CHAINS (379.3 FEET) SOUTH OF THE CORNER OF SECTION 36 AND 1/4 SECTION 36. THE CORNER IS QUITE DISTINCT AND OFFERED A VERY GOOD TIE TO WHERE THE CORNER TREE MUST HAVE BEEN.

**"SURVEY MARKER"  
SIGN**

**PLEASE  
PROTECT  
NEARBY  
SURVEY  
MARKER**

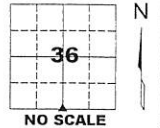
IF LOCATION OF THIS MARK  
IS ENDANGERED  
PLEASE CONTACT  
JONES COUNTY  
ENGINEER'S OFFICE  
319-462-3785



UNITED STATES PUBLIC LAND  
SURVEY CORNER CERTIFICATE  
LAND SURVEY MONUMENTS SITUATED IN SECTION 36, TOWNSHIP 86 NORTH,  
RANGE 1 WEST OF THE 5TH PRINCIPAL MERIDIAN, JONES COUNTY, IOWA.

STATE PLANE COORDINATE  
NAD 83 IOWA NORTH  
N 3549485.21  
E 5623417.04

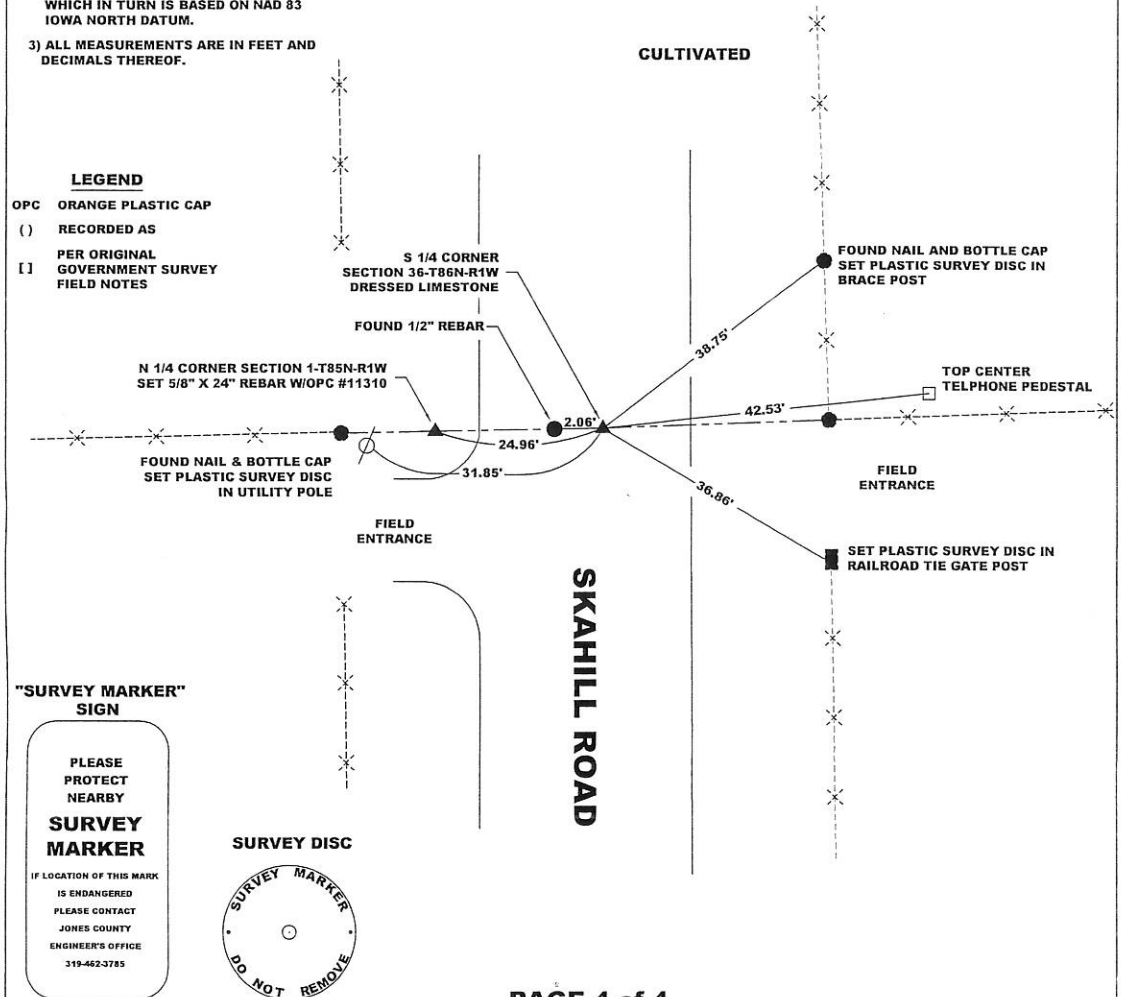
CORNER SECTION TOWNSHIP RANGE  
S 1/4 CORNER 36 T86N R1W



NOTES:

- 1) THE STATE PLANE COORDINATES AS SHOWN ARE FOR CONVENIENCE ONLY. THE TIES AS SHOWN SHOULD BE USED TO REPLACE THE CORNER, IF DESTROYED.
- 2) COORDINATES AS SHOWN ARE GRID COORDINATES AND BASED ON JONES COUNTY G.P.S. CONTROL NETWORK WHICH IN TURN IS BASED ON NAD 83 IOWA NORTH DATUM.
- 3) ALL MEASUREMENTS ARE IN FEET AND DECIMALS THEREOF.

**LEGEND**  
OPC ORANGE PLASTIC CAP  
( ) RECORDED AS  
[ ] PER ORIGINAL GOVERNMENT SURVEY FIELD NOTES

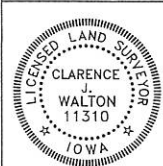


PAGE 4 of 4

PREVIOUSLY RECORDED IN BOOK 300, PAGE 216, JONES COUNTY RECORDER'S OFFICE.

MONUMENT DESCRIPTION AND HOW ESTABLISHED FOUND 6"X6"X15" POINTED DRESSED LIMESTONE 19" BELOW PRESENT ROAD SURFACE. STONE IS 2.06' EAST OF EXISTING 1/2" REBAR PER BOOK 300, PAGE 216 IN THE JONES COUNTY, IOWA RECORDER'S OFFICE. SET 5/8" X 24" REBAR AT NORTH AND SOUTH ENDS OF STONE FOR DETECTION PURPOSES. NO SURVEY RECORD SHOW ORIGIN OF THIS STONE.

FIELD BOOK 344, PAGE 78. DATE OF SURVEY: 10/9/09



I hereby certify that this land surveying document and the related survey work was performed by me or under my direct personal supervision and that I am a duly registered Land Surveyor under the laws of the State of Iowa.

Signed: *Clarence J. Walton* 4/23/10  
Clarence J. Walton, L.S.  
My Registration Renewal Date is December 31, 2011  
Iowa License Number 11310  
Pages or sheets covered by this seal: 1 of 1.

- ☐ A. THERE IS NO CERTIFICATE FOR THE CORNER ON FILE WITH THE RECORDER OF THE COUNTY IN WHICH THE CORNER IS LOCATED.
- ☐ B. THE CORNER MONUMENT HAS BEEN REPLACED OR MODIFIED.
- ☒ C. THE SURVEYOR IN RESPONSIBLE CHARGE OF THE LAND SURVEYING ACCEPTS A CORNER POSITION THAT DIFFERS FROM THAT SHOWN IN THE PUBLIC RECORDS OF THE COUNTY IN WHICH THE CORNER IS LOCATED.
- ☐ D. THE REFERENCE TIES REFERRED TO IN AN EXISTING PUBLIC RECORD NO LONGER EXIST.
- ☐ E. EXISTING CORNER TIES UPDATED.

CORNERS TO BE INDEXED

CORNER	SECTION	TOWNSHIP	RANGE
S 1/4 CORNER	36	86N	1W

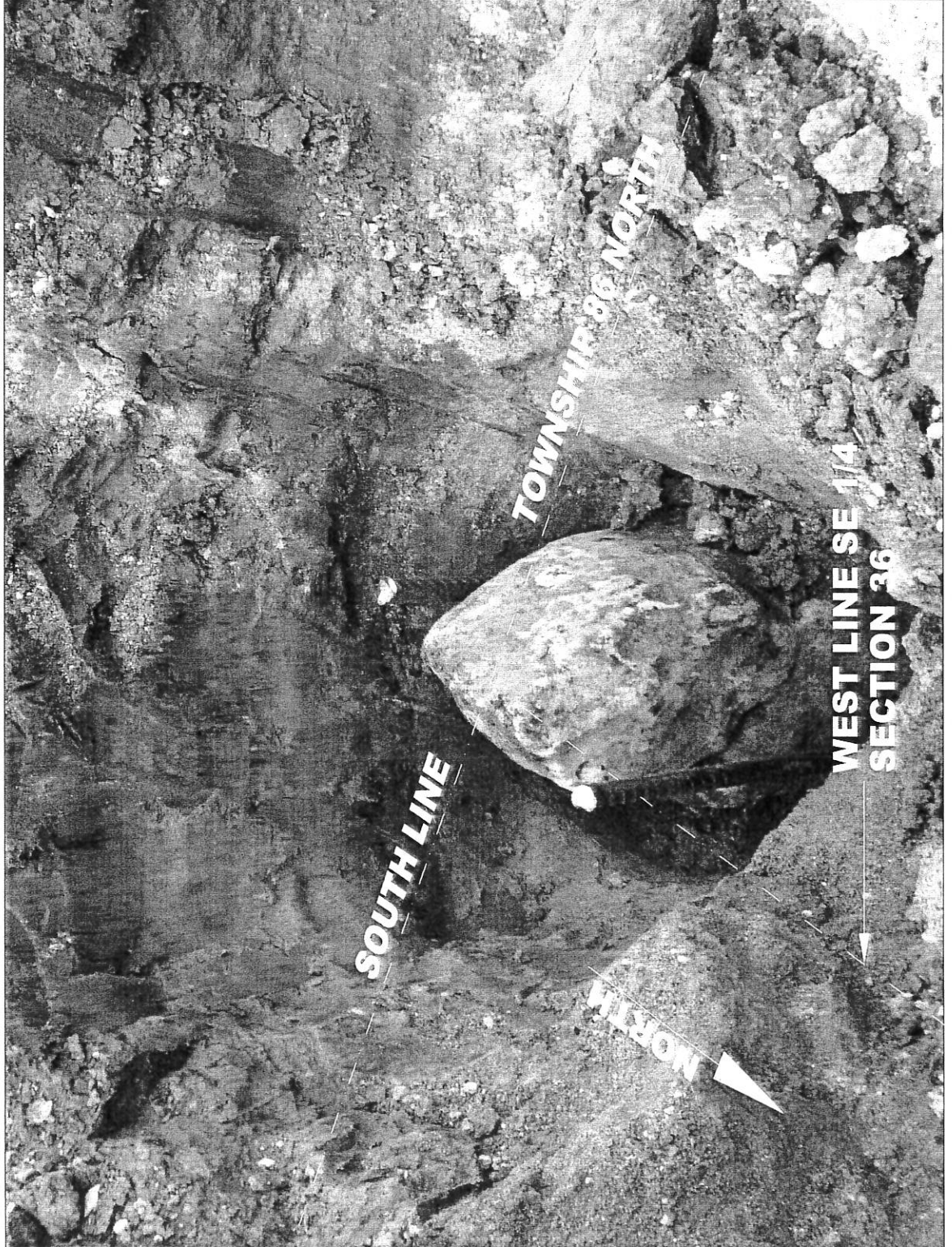
JONES COUNTY ENGINEER'S OFFICE



19501 HWY. 64, ANAMOSA, IOWA 52205  
(319) 462-3785

**S 1/4 CORNER**  
**SECTION 36-T86N-R1W**

VIEW IS LOOKING SOUTHEAST FROM THE MIDDLE OF SKAHILL ROAD. FOUND STONE IS 6" X 6" X 15" POINTED, DRESSED LIMESTONE AND IS 19" BELOW PRESENT ROAD SURFACE. NOTE ORIENTATION OF STONE. THE MAJOR AXES OF THE STONE EXCEPT VERTICAL RUN WITH THE CARDINAL DIRECTIONS OF THE COMPASS. TOP CENTER OF STONE IS 2.06' EAST OF FOUND 1/2" REBAR. 5/8" X 24" REBAR ARE SET FOR DETECTION PURPOSES ONLY AND ARE SNUGGED UP AGAINST THE NORTH AND SOUTH SIDES OF THE STONE.





Document 17-4053

Book 2017 Page 4053 Type 15 001 Pages 1  
Date 11/15/2017 Time 2:10 PM  
Rec Amt \$7.00

ARLENE SCHAUF, RECORDER/REGISTRAR  
JACKSON COUNTY IOWA

PREPARED BY: MICHAEL J. WEBER, WEBER SURVEYING, LLC, 26789 46TH AVE, BERNARD, IA 52032 (563) 879-4173

## UNITED STATES PUBLIC LAND SURVEY CORNER CERTIFICATE OF

LAND SURVEY MONUMENTS SITUATED IN SECTION 36, TOWNSHIP 86 NORTH, RANGE 1 EAST  
OF THE FIFTH PRINCIPAL MERIDIAN, JACKSON COUNTY, IOWA.  
PREVIOUSLY RECORDED NONE

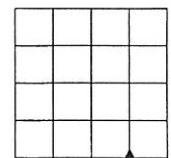
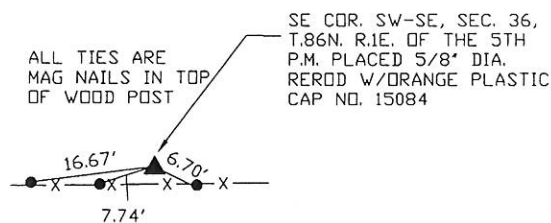
(book, page, document number, etc.)

(Show reason for preparing this certificate, the evidence and detailed procedures used in establishing the corner positions and monumentation found or placed.)

-SE COR. SW-SE, SEC. 36, T.86N. R.1E. OF THE 5TH P.M. PLACED 5/8" DIA. REROD W/ORANGE PLASTIC CAP NO. 15084. ESTABLISHED CORNER MIDWAY AND ONLINE BETWEEN THE SE CORNER AND THE CALCULATED SOUTH 1/4 CORNER OF SAID SECTION 36.

(Show a minimum of three reference ties to durable physical objects, relevant monuments and physical conditions that will enable recovery of the corner.)

### PLAN - VIEW



DRAWING NOT TO SCALE

DWG. NO. 17072-OTTING

	I HEREBY CERTIFY THAT THIS LAND SURVEYING DOCUMENT WAS PREPARED AND THE RELATED SURVEY WORK WAS PERFORMED BY ME OR UNDER MY DIRECT PERSONAL SUPERVISION AND THAT I AM A DULY LICENSED LAND SURVEYOR UNDER THE LAWS OF THE STATE OF IOWA.	List Corners to be Indexed
	<i>Michael J. Weber</i> <u>October 11, 2017</u> MICHAEL J. WEBER (DATE) LICENSE NUMBER 15084 MY LICENSE RENEWAL DATE IS DECEMBER 31, 2017 SHEETS COVERED BY THIS SEAL: THIS SHEET	Corner Sec Twp Range SE COR. SW-SE 36 86N 1E