

UNITED STATES PUBLIC LAND SURVEY CORNER CERTIFICATE
OF

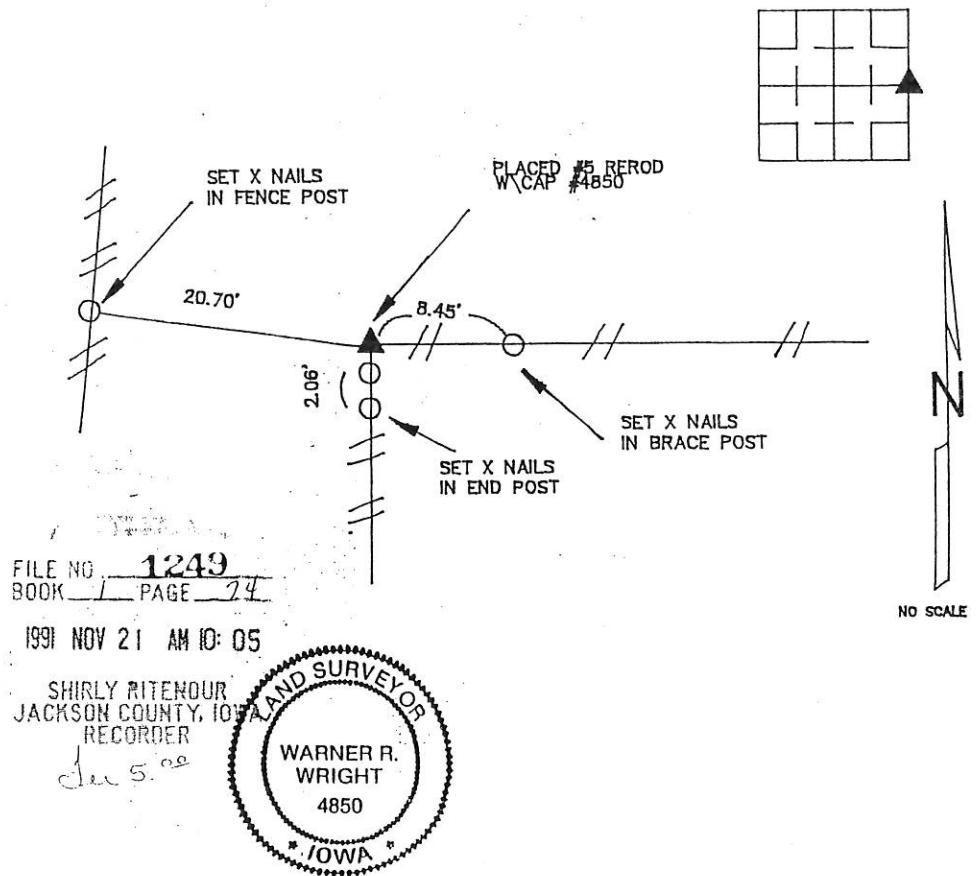
LAND SURVEY MONUMENTS SITUATED IN SECTION 32, TOWNSHIP 86N, RANGE 1E
OF THE FIFTH PRINCIPAL MERIDIAN, JACKSON COUNTY, IOWA.
PREVIOUSLY RECORDED IN _____ IN COUNTY RECORDER'S OFFICE.

(Show reason for preparing this certificate, the evidence and detailed procedures used in establishing the corner positions and monumentation found or placed.)

Monument Description and Remarks: PLACED # 5 REROD WITH CAP 4850

PLAN - VIEW

(Show a minimum of three reference ties to durable physical objects, relevant monuments and physical conditions that will enable recovery of the corner.)



I HEREBY CERTIFY THAT THE SURVEY WORK WAS COMPLETED AND THIS CERTIFICATE
WAS PREPARED BY ME OR UNDER MY DIRECT PERSONAL SUPERVISION AND THAT
I AM A DULY REGISTERED LAND SURVEYOR UNDER THE LAWS OF THE STATE OF IOWA.

NAME WARNER R. WRIGHT REG. NO. 4850
DATE: 11-16-91

LIST CORNERS TO BE INDEXED

CORNERS	SECTION	TWP	RANGE
E 1/4 CORNER	32	86N	1E

BOOK 1 PAGE 74



IHW ENGINEERS &
SURVEYORS P.C.

3210 ST. JOSEPH DR. DUBUQUE, IA 52001 319856-2484
302 S. RIVER PARK DR. GUTTENBERG, IA 52052 319252-3823
P.O. BOX 275 GALENA, ILL. 61036 815777-0359

COUNTY: JACKSON
TOWNSHIP: BUTLER

MONUMENT RECORD

DATE: 10-4-91
REVISED:

FIELD
BOOK NO. 332

PROJ.
NO. 917132-0

INDEX
NO.

FILE NO. **01 0499**
BOOK **1** PAGE **464**
01 FEB 12 AM 11:13

Prepared by Wm. Burger Land Surveyors 510 3rd Street West Court, Worthington, Iowa Phone 319

PHYLLIS M. GERLACH
JACKSON COUNTY, IOWA
RECORDER

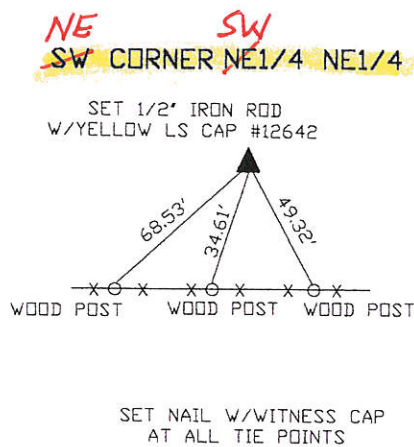
UNITED STATES PUBLIC LAND SURVEY CORNER CERTIFICATE

Land Survey Monuments situated in Section 32, Township 86N, Range 1E, of the Fifth Principal Meridian, Jackson County, Iowa. Previously recorded in N/A in the Office of the County Recorder

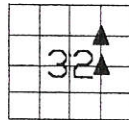
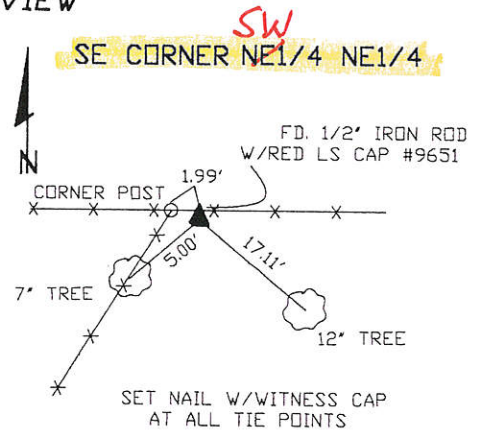
NE SW Monument Description and Remarks: (No Corner Certificates found at the County Recorders Office)

NW CORNER NE 1/4 NE 1/4 - SET 1/2" IRON ROD W/YELLOW LS CAP #12642 - RUN STRAIGHT LINES FROM OPPOSITE 1/4 1/4 CORNERS AND SET AT POINT OF INTERSECTION

SW **SE CORNER NE 1/4 NE 1/4** - FD. 1/2" IRON ROD W/RED LS CAP #9651



PLAN VIEW



SEAL

SEC. 32 TWP. 86N RANGE 1E

I hereby certify that this land surveying document was prepared and related survey work was performed by me or under my direct personal supervision and that I am a duly licensed Land Surveyor under the laws of the State of Iowa.

William H. Burger 2/5/2011
William H. Burger Date

License number 12642

My license renewal date is December 31, 2002

Pages or Sheets covered by this seal: Sheet 1 of 1

CORNERS TO BE INDEXED

NE CORNER SW 1/4 NE 1/4 32 86N 1E

SE CORNER SW 1/4 NE 1/4 32 86N 1E

What is shown in box
at left is the same for
what is to be indexed
from box below.