



Document 16-1513

Book 2016 Page 1513 Type 15 001 Pages 1

Date 5/02/2016 Time 1:37 PM

Rec Amt \$7.00

ARLENE SCHAUF, RECORDER/REGISTRAR
JACKSON COUNTY IOWA

PREPARED BY: MICHAEL J. WEBER, WEBER SURVEYING, LLC, 26789 46TH AVE, BERNARD, IA 52032 (563) 879-4173

UNITED STATES PUBLIC LAND SURVEY CORNER CERTIFICATE OF

LAND SURVEY MONUMENTS SITUATED IN SECTION 31, TOWNSHIP 86 NORTH, RANGE 1 EAST
OF THE FIFTH PRINCIPAL MERIDIAN, JACKSON COUNTY, IOWA.
PREVIOUSLY RECORDED NONE

(book, page, document number, etc.)

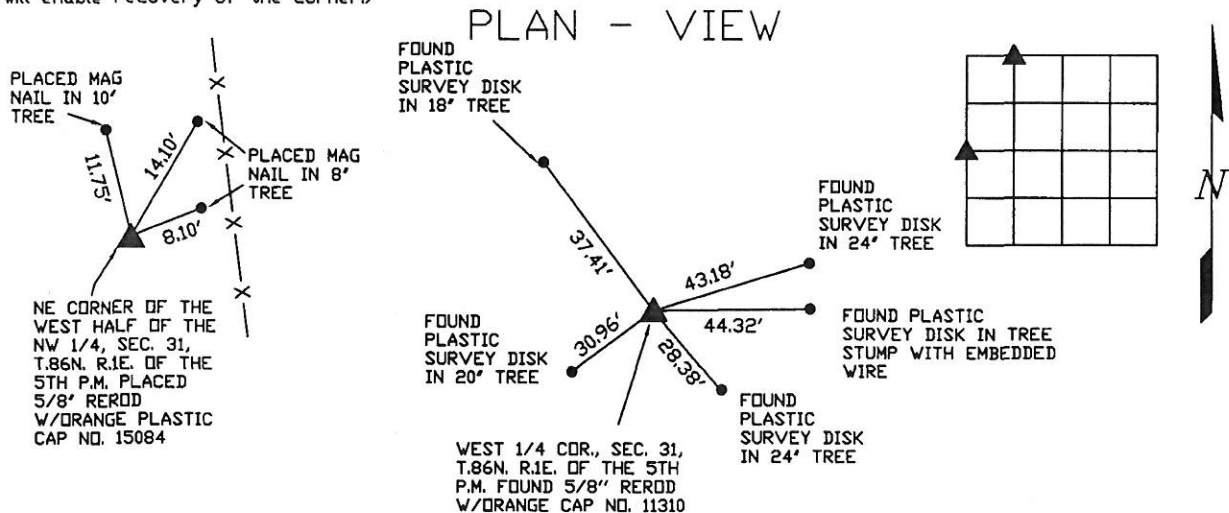
(Show reason for preparing this certificate, the evidence and detailed procedures used in establishing the corner positions and monumentation found or placed.)

Monument Description and Remarks:

-NE CORNER OF THE WEST HALF OF THE NW 1/4, SEC. 31, T.86N. R.1E. OF THE 5TH P.M. PLACED 5/8" REROD W/ORANGE PLASTIC CAP NO. 15084. ESTABLISHED CORNER ONLINE BETWEEN THE NW CORNER AND NE CORNER OF SAID SEC. 31 AT A PROPORTIONATE DISTANCE USING THE ORIGINAL GOVERNMENT NOTES.

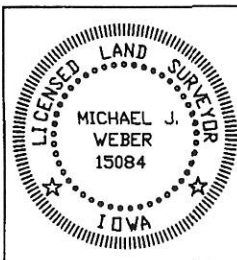
-WEST 1/4 COR., SEC. 31, T.86N. R.1E. OF THE 5TH P.M. FOUND A 5/8" REROD W/ORANGE CAP NO. 11310 PER SEC. COR. CERT. DOC. NO. 2010 1018 RECORDED IN THE JONES COUNTY RECORDER'S OFFICE INDEXED AS THE EAST 1/4 CORNER OF SEC. 36, T.86N. R.1W. OF THE 5TH P.M.

(Show a minimum of three reference ties to durable physical objects, relevant monuments and physical conditions that will enable recovery of the corner.)



DRAWING NOT TO SCALE

DWG. 16011-SCHWENDINGER



I HEREBY CERTIFY THAT THIS LAND SURVEYING DOCUMENT WAS PREPARED AND THE RELATED SURVEY WORK WAS PERFORMED BY ME OR UNDER MY DIRECT PERSONAL SUPERVISION AND THAT I AM A DULY LICENSED LAND SURVEYOR UNDER THE LAWS OF THE STATE OF IOWA.

Michael J. Weber
MICHAEL J. WEBER

LICENSE NUMBER 15084

MY LICENSE RENEWAL DATE IS DECEMBER 31, 2017

SHEETS COVERED BY THIS SEAL: THIS SHEET

April 25, 2016
(DATE)

List Corners to be Indexed
Corner Sec Twp Range

NE COR., NW-NW 31 86N 1E
WEST 1/4 COR. 31 86N 1E