



Document 05-1954

Book 2 Page 354 Type 06 023 Pages 1

Date 5/17/2005 Time 12:51 PM

Rec Amt \$7.00

PHYLLIS M. GERLACH, RECORDER
JACKSON COUNTY IOWA

PREPARED BY: MICHAEL J. WEBER, WEBER SURVEYING, LLC, 26789 46TH AVE, BERNARD, IA 52032 (563) 879-4173

UNITED STATES PUBLIC LAND SURVEY CORNER CERTIFICATE
OFLAND SURVEY MONUMENTS SITUATED IN SECTION 30, TOWNSHIP 86 NORTH, RANGE 1 EAST
OF THE FIFTH PRINCIPAL MERIDIAN, JACKSON COUNTY, IOWA.
PREVIOUSLY RECORDED NONE UNLESS OTHERWISE NOTED

(book, page, document number, etc.)

(Show reason for preparing this certificate, the evidence and detailed procedures used in establishing the corner positions and monumentation found or placed.)

Monument Description and Remarks:

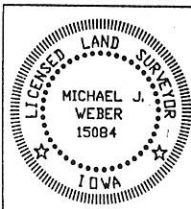
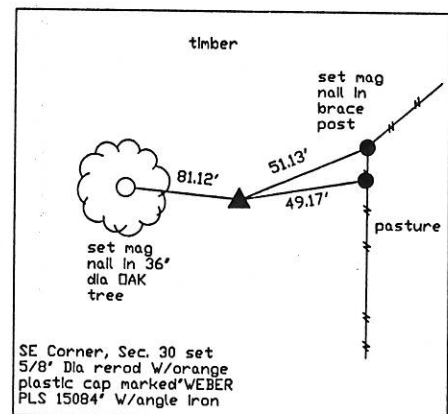
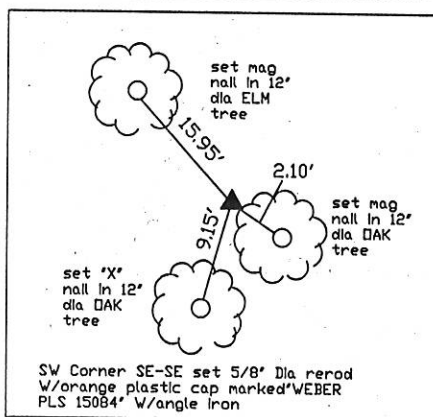
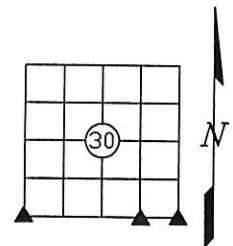
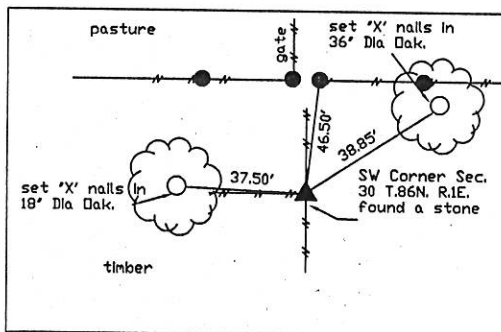
SE Corner, Section 30, established corner online between the SW Corner of the SW 1/4 of the SE 1/4, Section 29, T.86N. R.1E. of the 5th P.M. and the SW Corner of Section 30, prorated the record distance and measured distance, set 5/8" Dia. rerod w/orange cap marked 'WEBER PLS 15084'

SW Corner of the SE 1/4 of the SE 1/4, Section 30, established corner online between the SE Corner and the SW Corner of Section 30, prorated the record distance and measured distance, set 5/8" Dia. rerod w/orange cap marked 'WEBER PLS 15084'

SW Corner, Section 30, found a stone pointing up referenced in Corner Certificate filed in the Jones County Engineers Office indexed as the NE Corner of Section 36, T.86N. R.1W. surveyed by Daniel Crawford No. 8812 dated April 18, 1991

PLAN - VIEW

(Show a minimum of three reference ties to durable physical objects, relevant monuments and physical conditions that will enable recovery of the corner.)

I HEREBY CERTIFY THAT THIS LAND SURVEYING DOCUMENT WAS
PREPARED AND THE RELATED SURVEY WORK WAS PERFORMED BY ME OR
UNDER MY DIRECT PERSONAL SUPERVISION AND THAT I AM A DULY
LICENSED LAND SURVEYOR UNDER THE LAWS OF THE STATE OF IOWA.MICHAEL J. WEBER
LICENSE NUMBER 15084

(DATE)

MY LICENSE RENEWAL DATE IS DECEMBER 31, 2005

SHEETS COVERED BY THIS SEAL:

Sheet 1

List Corners to be Indexed

Corner	Sec	Twp	Range
SW Corner	30	86N	1E
SE Corner	30	86N	1E
SW Corner	30	86N	1E
SE-SE	30	86N	1E

Book 2 Page 354