



Document 05-2864

Book 2 Page 370 Type 06 023 Pages 1
Date 7/19/2005 Time 8:11 AM
Rec Amt \$7.00

PHYLLIS M. GERLACH, RECORDER
JACKSON COUNTY IOWA

PREPARED BY: MICHAEL J. WEBER, WEBER SURVEYING, LLC, 26789 46TH AVE, BERNARD, IA 52032 (563) 879-4173

UNITED STATES PUBLIC LAND SURVEY CORNER CERTIFICATE OF

LAND SURVEY MONUMENTS SITUATED IN SECTION 26, TOWNSHIP 86 NORTH, RANGE 1 EAST
OF THE FIFTH PRINCIPAL MERIDIAN, JACKSON COUNTY, IOWA.
PREVIOUSLY RECORDED NONE UNLESS OTHERWISE NOTED

(book, page, document number, etc.)

(Show reason for preparing this certificate, the evidence and detailed procedures used in establishing the corner positions and nonumentation found or placed.)

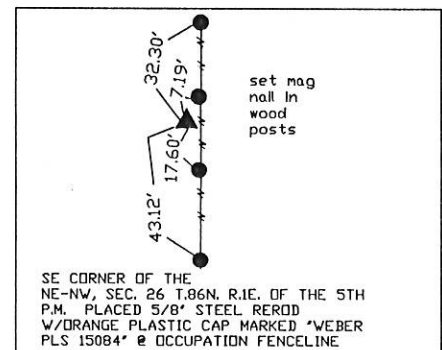
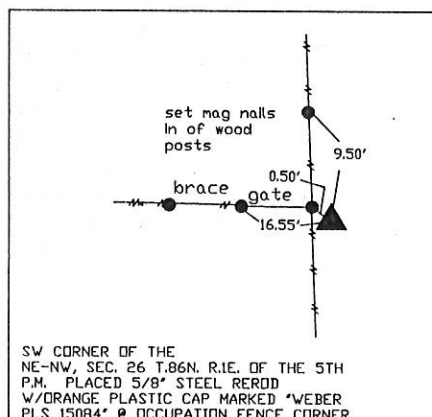
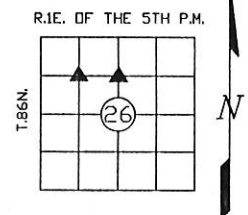
Monument Description and Remarks:

SE CORNER OF THE NE-NW, SEC. 26 T.86N. R.1E. OF THE 5TH P.M. PLACED 5/8" STEEL
REROD W/ORANGE PLASTIC CAP MARKED "WEBER PLS 15084", established corner inline with
the North-South occupation fence line intersected by a line from the SW corner of
the NE-NW of Sec. 26 to the occupation fence line to the East running East-West

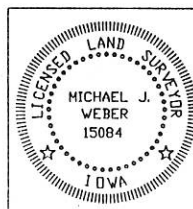
SW CORNER OF THE NE-NW, SEC. 26 T.86N. R.1E. OF THE 5TH P.M. PLACED 5/8" STEEL
REROD W/ORANGE PLASTIC CAP MARKED "WEBER PLS 15084" @ OCCUPATION FENCE CORNER

PLAN - VIEW

(Show a minimum of three reference ties to durable physical objects, relevant monuments and physical conditions that will enable recovery of the corner.)



DWG. NAME: STEFFEN



I HEREBY CERTIFY THAT THIS LAND SURVEYING DOCUMENT WAS
PREPARED AND THE RELATED SURVEY WORK WAS PERFORMED BY ME OR
UNDER MY DIRECT PERSONAL SUPERVISION AND THAT I AM A DULY
LICENSED LAND SURVEYOR UNDER THE LAWS OF THE STATE OF IOWA.

Michael J. Weber (DATE) *July 12, 2005*
MICHAEL J. WEBER
LICENSE NUMBER 15084
MY LICENSE RENEWAL DATE IS DECEMBER 31, 2005

SHEETS COVERED BY THIS SEAL: 1

Corner	Sec	Twp	Range
SE Corner	26	86N	1E
NE-NW	26	86N	1E
SW Corner	26	86N	1E
NE-NW	26	86N	1E

Book 2 Page 370