



Document 07-965

Book 2 Page 547 Type 15 001 Pages 1

Date 3/07/2007 Time 10:26 AM

Rec Amt \$7.00

ARLENE SCHAUF, RECORDER
JACKSON COUNTY IOWA

Prepared by Wm. Burger Land Surveyors

510 3rd Street West Court, Worthington, Iowa

Phone 563 - 855 2028

UNITED STATES PUBLIC LAND SURVEY CORNER CERTIFICATE

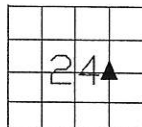
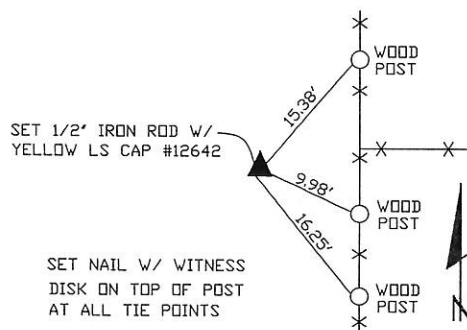
Land Survey Monuments situated in Section 24, Township 86N, Range 1E, of the Fifth Principal Meridian, Jackson County, Iowa. Previously recorded in N/A in the Office of the County Recorder

Monument Description and Remarks: (No Corner Certificates found at the County Recorders Office)

NW CORNER NE1/4 SE1/4 - SET 1/2" IRON ROD W/ YELLOW LS CAP #12642 - USED INFORMATION FROM PLAT PREVIOUSLY RECORDED IN THE OFFICE OF THE JACKSON COUNTY RECORDER BOOK 1, PAGE 96

PLAN VIEW

NW CORNER NE1/4 SE1/4



SEC. 24 TWP. 86N RANGE 1E

CORNERS TO BE INDEXED

NW CORNER NE1/4 SE1/4 24 86N 1E



I hereby certify that this land surveying document was prepared and related survey work was performed by me or under my direct personal supervision and that I am a duly licensed Land Surveyor under the laws of the State of Iowa.

William H. Burger 3/6/07
William H. Burger Date

License number 12642

My license renewal date is December 31, 2008

Pages or Sheets covered by this seal Sheet 1 of 1

Book 2 Page 547