

PHYLLIS M. GERLACH
JACKSON COUNTY, IOWA
RECORDER

Recorder's Name: John L. White Address: 1212 Locust St. Dubuque, IA Telephone: 556-4389 *See 6.00*

SLSI 9-94

UNITED STATES PUBLIC LAND SURVEY CORNER CERTIFICATE

OF

Land Survey Monuments situated in Section 23 Township 86N, Range
1E, of the Fifth Principal Meridian, Jackson County, Iowa.
Previously recorded in _____ in County Recorder's Office.
(book, page, document number, etc.)

(Show reason for preparing this certificate, the evidence and detailed procedures used in establishing the corner positions and monumentation found or placed.)

Monument Description and Remarks: PLACED 5/8" REROD/YELLOW CAP "JLW 4016" @ THE SW
CORNER. BURIED 4".

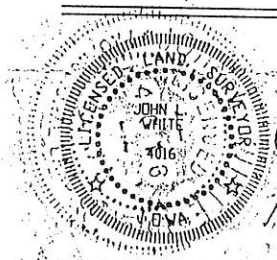
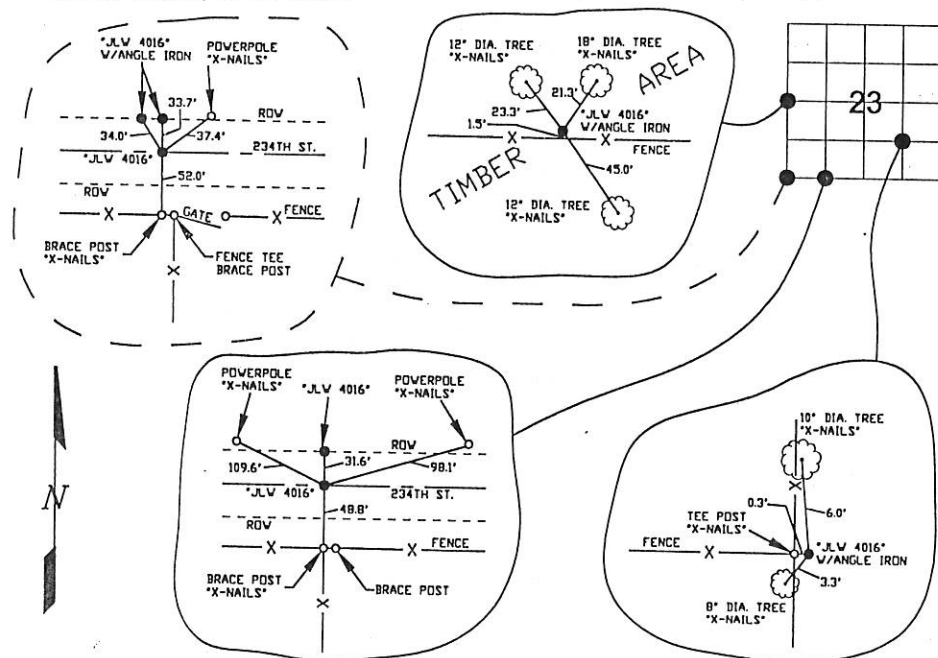
PLACED 5/8" REROD/YELLOW CAP "JLW 4016" W/ANGLE IRON @ THE W1/4 CORNER. EXPOSED 4".

PLACED 5/8" REROD/YELLOW CAP "JLW 4016" @ THE SE CORNER OF THE SW1/4 SW1/4. BURIED 4".

PLACED 5/8" REROD/YELLOW CAP "JLW 4016" W/ANGLE IRON @ THE SW CORNER NE1/4 SE1/4. EXPOSED 6"

PLAN - VIEW

(Show a minimum of three reference ties to durable physical objects, relevant monuments and physical conditions that will enable recovery of the corner.)



I HEREBY CERTIFY THAT THIS LAND SURVEYING DOCUMENT WAS PREPARED AND THE RELATED SURVEY WORK WAS PERFORMED BY ME OR UNDER MY DIRECT PERSONAL SUPERVISION AND THAT I AM A DULY LICENSED LAND SURVEYOR UNDER THE LAWS OF THE STATE OF IOWA.

JOHN L. WHITE 16 May 2001 (DATE)

LICENSE NUMBER 4016

MY LICENSE RENEWAL DATE IS DECEMBER 31, 2002

Corners	List Corners to be Indexed	Section	Tw	Range
SW COR.	23	86N	1E	
W1/4 COR.	23	86N	1E	
SE COR. OF SW1/4 SW1/4	23	86N	1E	
SW COR. OF NE1/4 SE1/4	23	86N	1E	

BUESING & ASSOCIATES
CONSULTING ENGINEERS
1212 LOCUST STREET
DUBUQUE, IOWA 52001
(319) 556-4389

MONUMENT RECORD
COUNTY: JACKSON
TOWNSHIP: BUTLER

DATE PLOTTED: 5-3-01
DATE REVISED:

FIELD BOOK # 162
PAGE # 4, 5 & 6

DRAWING
00259-04

01 MAY 25 AM 10:31

PHYLLIS M. GERLACH
JACKSON COUNTY, IOWA
RECORDER

Prepare's Name: John L. White

Address: 1212 Locust St. Dubuque, IA

Telephone: 556-4389

SLSI 9-94

UNITED STATES PUBLIC LAND SURVEY CORNER CERTIFICATE

OF

Land Survey Monuments situated in Section 23, Township 86N, Range 1E, of the Fifth Principal Meridian, Jackson County, Iowa.
Previously recorded in _____ in County Recorder's Office.
(book, page, document number, etc.)

(Show reason for preparing this certificate, the evidence and detailed procedures used in establishing the corner positions and monumentation found or placed.)

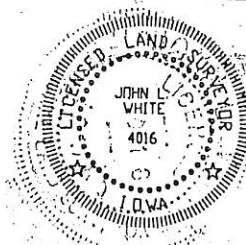
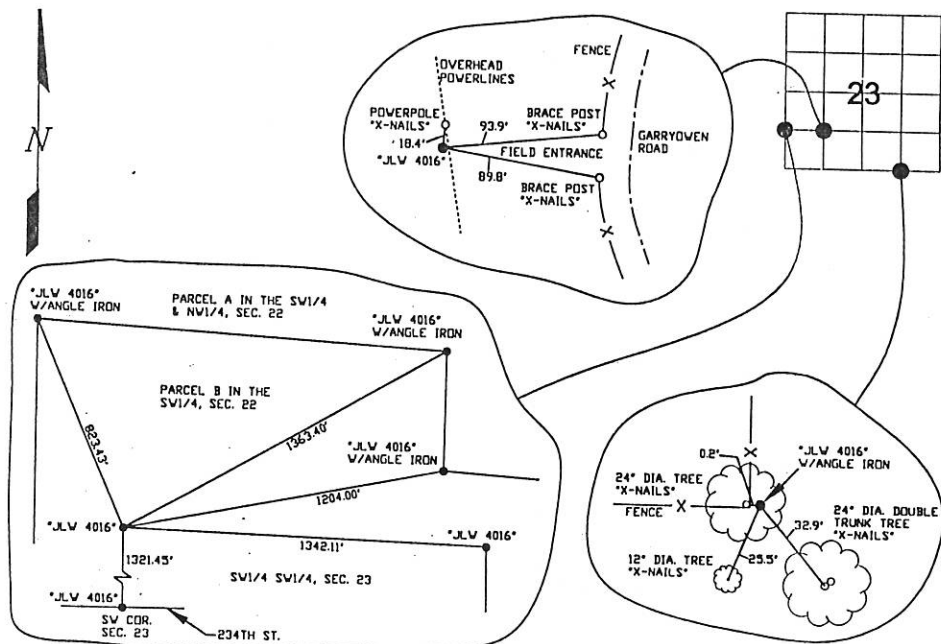
Monument Description and Remarks: PLACED 5/8" REROD/YELLOW CAP "JLW 4016" W/ANGLE IRON @ THE SW CORNER OF THE SE1/4 SE1/4. EXPOSED 3".

PLACED 5/8" REROD/YELLOW CAP "JLW 4016" @ THE NW CORNER OF THE SW1/4 SW1/4. BURIED 1.3'

PLACED 5/8" REROD/YELLOW CAP "JLW 4016" @ THE NE CORNER OF THE SW1/4 SW1/4. BURIED 1.3'.

PLAN - VIEW

(Show a minimum of three reference ties to durable physical objects, relevant monuments and physical conditions that will enable recovery of the corner.)



I HEREBY CERTIFY THAT THIS LAND SURVEYING DOCUMENT WAS PREPARED AND THE RELATED SURVEY WORK WAS PERFORMED BY ME OR UNDER MY DIRECT PERSONAL SUPERVISION AND THAT I AM A DULY LICENSED LAND SURVEYOR UNDER THE LAWS OF THE STATE OF IOWA.

JOHN L. WHITE

(DATE)

LICENSE NUMBER 4016

MY LICENSE RENEWAL DATE IS DECEMBER 31, 2002

Corners	List Corners to be Indexed	Section	Top	Range
SW COR. OF SE1/4 SE1/4	23	86N	1E	
NW COR. OF SW1/4 SW1/4	23	86N	1E	
NE COR. OF SW1/4 SW1/4	23	86N	1E	

BUESING & ASSOCIATES
CONSULTING ENGINEERS
1212 LOCUST STREET
DUBUQUE, IOWA 52001
(319) 556-4389

MONUMENT RECORD

COUNTY: JACKSON
TOWNSHIP: BUTLER

DATE PLOTTED: 5-3-01
DATE REVISED:

FIELD BOOK # 182
PAGE # 5 & 6

DRAWING
00259-04

FILE NO. 03-1345
BOOK 1 PAGE 619

03 MAR 11 PM 2:31

PHYLLIS M. GERLACH
JACKSON COUNTY, IOWA
RECORDER

Prepared by Wm. Burger Land Surveyors

510 3rd Street West Court, Worthington, Iowa

Phone 562-12028

UNITED STATES PUBLIC LAND SURVEY CORNER CERTIFICATE

Land Survey Monuments situated in Section 23, Township 86N, Range 1E, of the Fifth Principal Meridian, Jackson County, Iowa. Previously recorded in N/A In the Office of the County Recorder

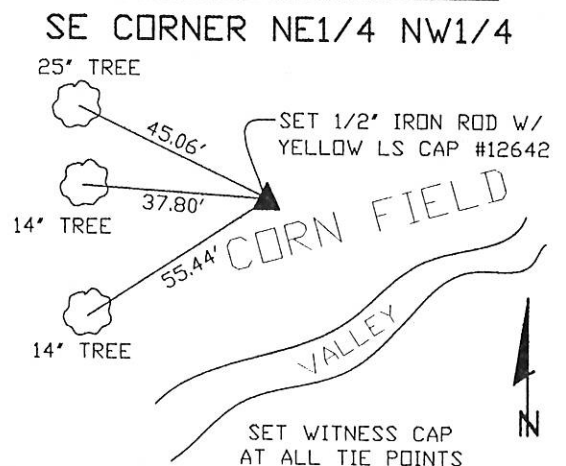
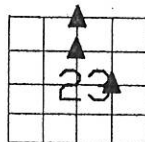
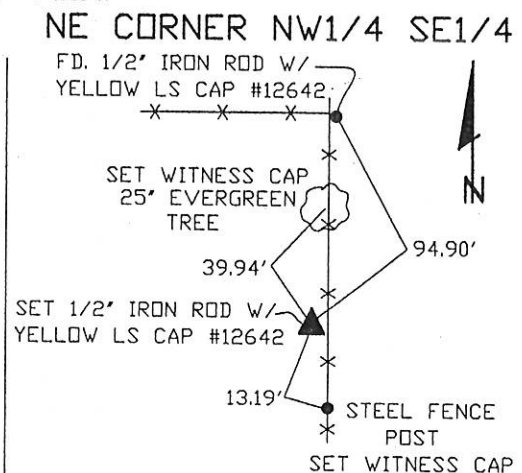
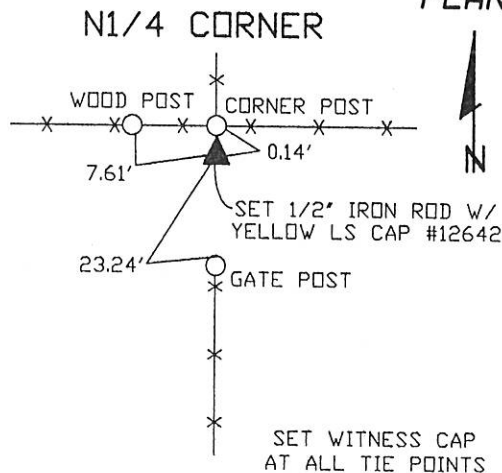
Monument Description and Remarks: (No Corner Certificates found at the County Recorders Office)

NE CORNER NW1/4 SE1/4 - SET 1/2" IRON ROD W/YELLOW LS CAP #12642 - SET ON LINE BETWEEN THE CENTER OF SECTION AND THE E1/4 CORNER AND SET ROD AT THE EXISTING NORTH SOUTH FENCELINE

SE CORNER NE1/4 NW1/4 - SET 1/2" IRON ROD W/YELLOW LS CAP #12642 - SET MIDWAY BETWEEN THE CENTER OF SECTION AND THE N1/4 CORNER IN LINE WITH EXISTING FENCELINE

N1/4 CORNER - SET 1/2" IRON ROD W/YELLOW LS CAP #12642 - USED EXISTING FENCELINE EVIDENCE TO ESTABLISH THIS CORNER

PLAN VIEW



SEAL

SEC. 23 TWP. 86N RANGE 1E

I hereby certify that this land surveying document was prepared and related survey work was performed by me or under my direct personal supervision and that I am a duly licensed Land Surveyor under the laws of the State of Iowa.

William H. Burger 3/14/03
Date

License number 12642

My license renewal date is December 31, 2004

Pages or Sheets covered by this seal: Sheet 1 of 1

CORNERS TO BE INDEXED

N1/4 CORNER	23	86N	1E
NE CORNER NW1/4 SE1/4	23	86N	1E
SE CORNER NE1/4 NW1/4	23	86N	1E

FILE NO. 03-1346
BOOK 1 PAGE 620

03 MAR 11 PM 2:31

PHYLLIS M. GERLACH
JACKSON COUNTY, IOWA
RECORDER
Phone 563-258-2028

Prepared by Wm. Burger Land Surveyors

510 3rd Street West Court, Worthington, Iowa

Fee \$6.00

UNITED STATES PUBLIC LAND SURVEY CORNER CERTIFICATE

Land Survey Monuments situated in Section 23, Township 86N, Range 1E, of the Fifth Principal Meridian, Jackson County, Iowa. Previously recorded in N/A in the Office of the County Recorder

Monument Description and Remarks: (No Corner Certificates found at the County Recorders Office)

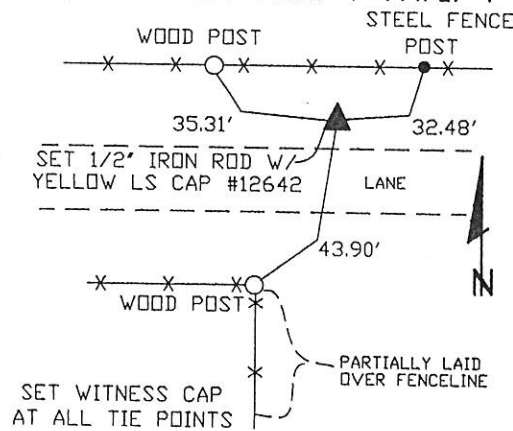
NW CORNER NE1/4 NW1/4 - SET 1/2" IRON ROD W/YELLOW LS CAP #12642 - SET ON LINE
AND MIDWAY BETWEEN THE NW CORNER AND THE N1/4 CORNER

SW CORNER NE1/4 NW1/4 - SET 1/2" IRON ROD W/YELLOW LS CAP #12642 - RUN STRAIGHT
LINE FROM OPPOSITE 1/4 1/4 CORNERS AND SET AT POINT OF INTERSECTION

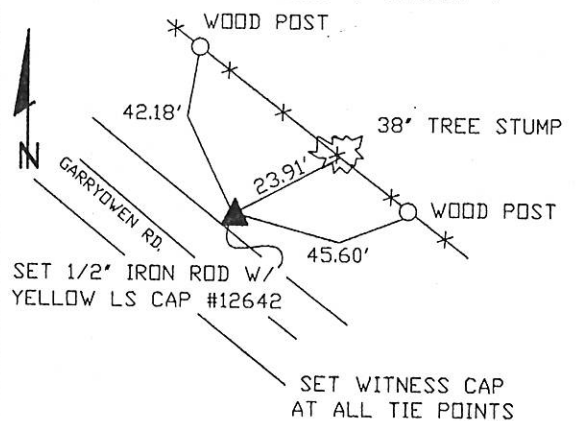
CENTER OF SECTION - SET 1/2" IRON ROD W/YELLOW LS CAP #12642 - RUN STRAIGHT
LINES FROM OPPOSITE 1/4 CORNERS AND SET AT POINT OF INTERSECTION

PLAN VIEW

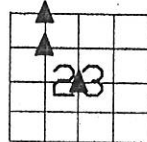
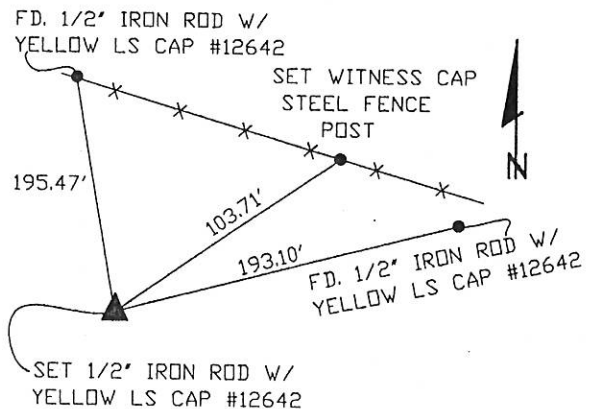
NW CORNER NE1/4 NW1/4



SW CORNER NE1/4 NW1/4



CENTER OF SECTION



SEAL

SEC. 23 TWP. 86N RANGE 1E

I hereby certify that this land surveying document was prepared and related survey work was performed by me or under my direct personal supervision and that I am a duly licensed Land Surveyor under the laws of the State of Iowa.

William H. Burger 3/11/13
Date

License number 12642

My license renewal date is December 31, 2004

Pages or Sheets covered by this seal: Sheet 1 of 1

CORNERS TO BE INDEXED

CENTER OF SECTION	23	86N	1E
NW CORNER NE1/4 NW1/4	23	86N	1E
SW CORNER NE1/4 NW1/4	23	86N	1E



Document 12-1811

Book 3 Page 44 Type 15 001 Pages 1

Date 5/01/2012 Time 9:47 AM

Rec Amt \$7.00

ARLENE SCHAUF, RECORDER/REGISTRAR
JACKSON COUNTY IOWA

Prepared by Wm. Burger Land Surveyor 510 3rd Street West Court, Worthington, Iowa Phone 563 - 855 2028

UNITED STATES PUBLIC LAND SURVEY CORNER CERTIFICATE

Land Survey Monuments situated in Section 23, Township 86N, Range 1E, of the Fifth Principal Meridian, Jackson County, Iowa. Previously recorded in SEE NOTE in the Office of the County Recorder

Monument Description and Remarks:

NE CORNER NW1/4 SE1/4 - FD. 1/2" IRON ROD W/YELLOW LS CAP #12642

SE CORNER NW1/4 SE1/4 - FD. 5/8" IRON ROD W/YELLOW LS CAP #4016

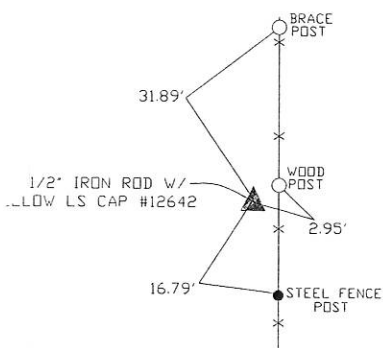
NOTE: THE NE CORNER NW1/4 SE1/4 WAS PREVIOUSLY TIED IN BOOK 1, PAGE 619.

THE SE CORNER NW1/4 SE1/4 WAS PREVIOUSLY IN BOOK 1, PAGE 477

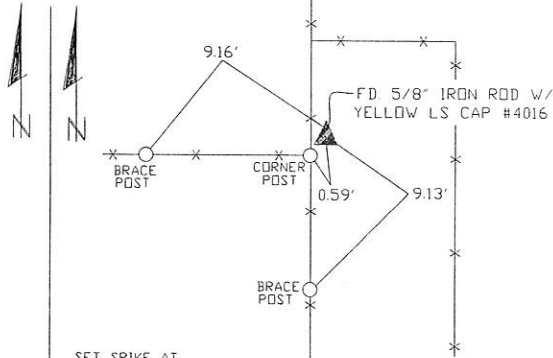
PLAN VIEW

NE CORNER NW1/4 SE1/4

SE CORNER NW1/4 SE1/4



SET SPIKE AT
ALL TIE POINTS



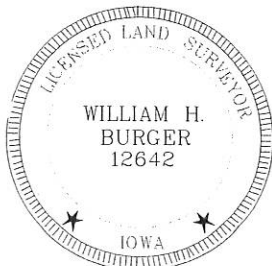
SET SPIKE AT
ALL TIE POINTS



SEC. 23 TWP. 86N RANGE 1E

CORNERS TO BE INDEXED

NE CORNER NW1/4 SE1/4	23	86N	1E
SE CORNER NW1/4 SE1/4	23	86N	1E



I hereby certify that this land surveying document was prepared and related survey work was performed by me or under my direct personal supervision and that I am a duly licensed Land Surveyor under the laws of the State of Iowa.

William H. Burger 4/12/12
William H. Burger Date

License number 12642

My license renewal date is December 31, 2012

Pages or Sheets covered by this seal: Sheet 1 of 1