



Document 10-13

Book 2 Page 702 Type 15 001 Pages 1
Date 1/04/2010 Time 10:53 AM
Rec Amt \$9.00

ARLENE SCHAUF, RECORDER/REGISTRAR
JACKSON COUNTY IOWA

Prepared by: SCHNEIDER Land Surveying and Planning P.O. Box 128 Farley, Iowa 52046 563-744-3631

UNITED STATES PUBLIC LAND SURVEY CORNER CERTIFICATE OF

Land Survey Monuments situated in Section 22, Township 86 North, Range 1 East
of the Fifth Principal Meridian, Jackson County, Iowa.
Previously recorded (NONE OF RECORD)

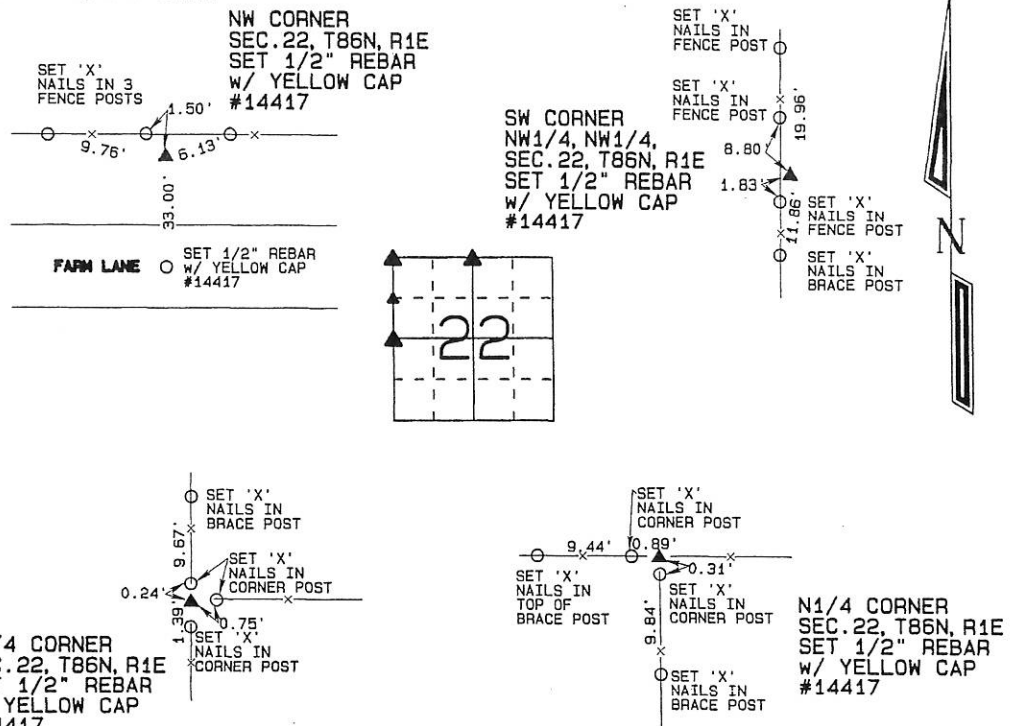
(BOOK, PAGE / INST. NO. / CABINET, SLIDE)

(Show reason for preparing this certificate, the evidence and detailed procedures used in establishing the corner positions and monumentation found or placed.)

Monument Description and Remarks: THE NW CORNER OF SECTION 22, T86N, R1E WAS ESTABLISHED 32 RODS EAST OF THE CENTERLINE OF BERNARD ROAD AND 22 RODS WEST OF THE SE CORNER OF LESTER AMBROSY'S PROPERTY AS FENCED. THE N1/4 CORNER OF SEC. 22, T86N, R1E WAS ESTABLISHED AT THE INTERSECTION OF OCCUPATION FENCES LOCATED SOUTH AND WEST OF THE CORNER. THE W1/4 CORNER OF SECTION 22, T86N, R1E WAS ESTABLISHED AS SHOWN ON A SURVEY PLAT FILED APRIL 2, 1979 IN BOOK 1-E, PAGE 12. THE SW CORNER OF THE NW1/4 OF THE NW1/4 OF SECTION 22, T86N, R1E WAS ESTABLISHED MIDWAY BETWEEN THE NW CORNER AND THE W1/4 CORNER AND IN LINE WITH OCCUPATION FENCES LOCATED NORTH AND SOUTH OF THE CORNER.

PLAN - VIEW

(Show a minimum of three reference ties to durable physical objects, relevant monuments and physical conditions that will enable recovery of the corner.)



I hereby certify that this land surveying document was prepared and the related survey work was performed by me or under my direct personal supervision and that I am a duly licensed Land Surveyor under the laws of the State of Iowa.

David P. Schneider 12/31/2009

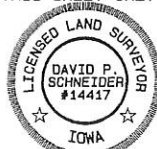
David P. Schneider P.L.S. #14417 Date:

My license renewal date is December 31, 2011.

Pages or sheets covered by this seal: THIS SHEET ONLY

SCHNEIDER
Land Surveying & Planning

P.O. Box 128 Farley, Iowa 52046
Ph. #563-744-3631 Fax #563-744-3629



List Corners to be Indexed

Corners	Section	Twp	Range
N1/4 CORNER	22	86N	1E
W1/4 CORNER	22	86N	1E
NW CORNER	22	86N	1E
SW CORNER NW1/4, NW1/4	22	86N	1E

Book 2 Page 702

JOB NO. 1352