

FILE NO. 04-1341
BOOK 2 PAGE 253
04 APR -1 AM 7:00

PHYLLIS M. GERLACH
JACKSON COUNTY, IOWA
RECORDED Fee \$11.00

PREPARED BY: MICHAEL J. WEBER, BUESING & ASSOCIATES, 1212 LOCUST ST., DUBUQUE, IA 52001, PH: (563) 556-4389

UNITED STATES PUBLIC LAND SURVEY CORNER CERTIFICATE OF

LAND SURVEY MONUMENTS SITUATED IN SECTION 21, TOWNSHIP 86 NORTH, RANGE 1 EAST
OF THE FIFTH PRINCIPAL MERIDIAN, JACKSON COUNTY, IOWA.
PREVIOUSLY RECORDED SEE REMARKS

(book, page, document number, etc.)

(Show reason for preparing this certificate, the evidence and detailed procedures used in establishing the corner positions and monumentation found or placed.)

Monument Description and Remarks:

Reason: Plat of Survey of Parcel A in the NE 1/4 was prepared showing the three corners identified below.

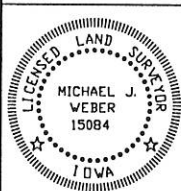
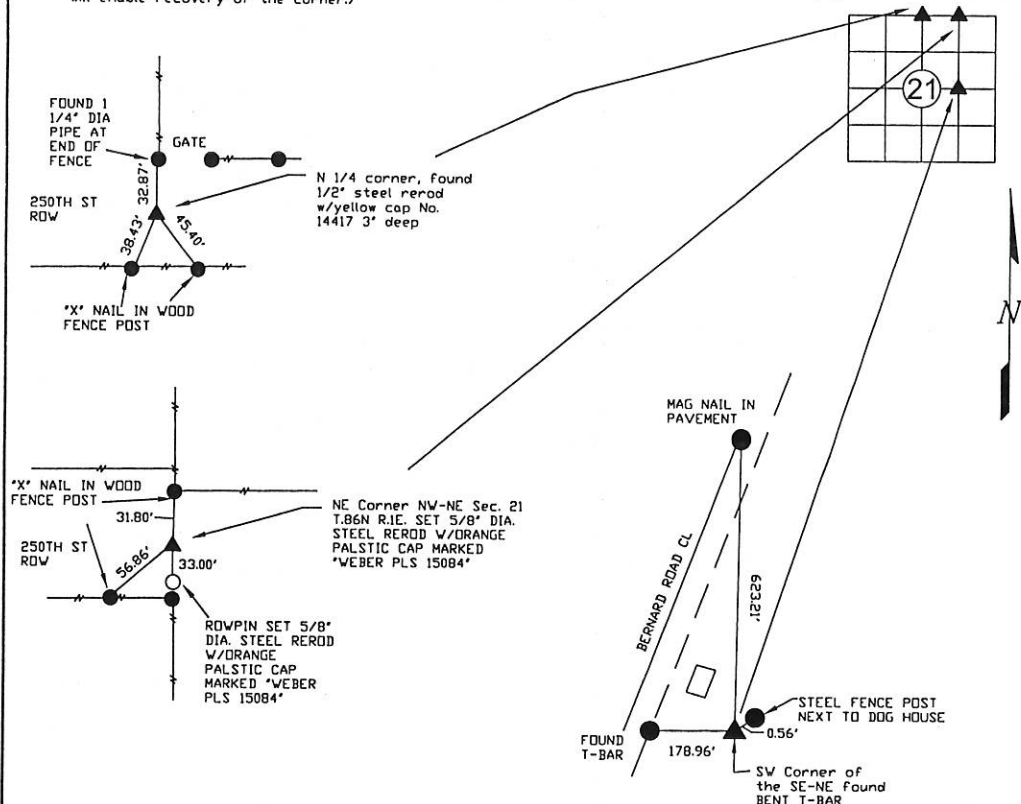
SW Corner of the SE-NE found T-bar set by Carl B. Schoenhard, Jr. per Plat recorded in Plat Book 1-E Page 12 Filed Apr. 2, 1979.

NE Corner of the NW-NE, no monumentation found, established corner midway and on line between the N 1/4 and the intersection of occupation fencelines at the NE corner of said Sec 21, set 5/8" Dia. rerod w/orange cap marked "WEBER PLS 15084"

N 1/4 corner, found 1/2" steel rerod w/yellow cap No. 14417, previously recorded in Book 1, Page 387 File No. 99-1976, established new ties on south fenceline

PLAN - VIEW

(Show a minimum of three reference ties to durable physical objects, relevant monuments and physical conditions that will enable recovery of the corner.)



I HEREBY CERTIFY THAT THIS LAND SURVEYING DOCUMENT WAS PREPARED AND THE RELATED SURVEY WORK WAS PERFORMED BY ME OR UNDER MY DIRECT PERSONAL SUPERVISION AND THAT I AM A DULY LICENSED LAND SURVEYOR UNDER THE LAWS OF THE STATE OF IOWA.

Michael J. Weber (Signature)
MICHAEL J. WEBER (DATE) 30 March 2004

LICENSE NUMBER 15084

MY LICENSE RENEWAL DATE IS DECEMBER 31, 2005

SHEETS COVERED BY THIS SEAL 1

List Corners to be Indexed

Corner	Sec	Twp	Range
NORTH 1/4	21	86N	1E
SOUTHWEST SE 1/4, NE 1/4	21	86N	1E
NORTHEAST NW 1/4, NE 1/4	21	86N	1E

COPY



Document 04-5623

Book 2 Page 319 Type 06 23 Pages 1
Date 12/23/2004 Time 9:55 AM
Rec Amt \$7.00

PHYLLIS M. GERLACH, RECORDER
JACKSON COUNTY IOWA

PREPARED BY: MICHAEL J. WEBER, BUESING & ASSOCIATES, 1212 LOCUST ST, DUBUQUE, IA 52001, PH: (563) 556-4389

UNITED STATES PUBLIC LAND SURVEY CORNER CERTIFICATE OF

LAND SURVEY MONUMENTS SITUATED IN SECTION 21, TOWNSHIP 86 NORTH, RANGE 1 EAST
OF THE FIFTH PRINCIPAL MERIDIAN, JACKSON COUNTY, IOWA.

PREVIOUSLY RECORDED NONE
(book, page, document number, etc.)

(Show reason for preparing this certificate, the evidence and detailed procedures used in establishing the corner positions and monumentation found or placed.)

Monument Description and Remarks:

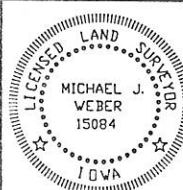
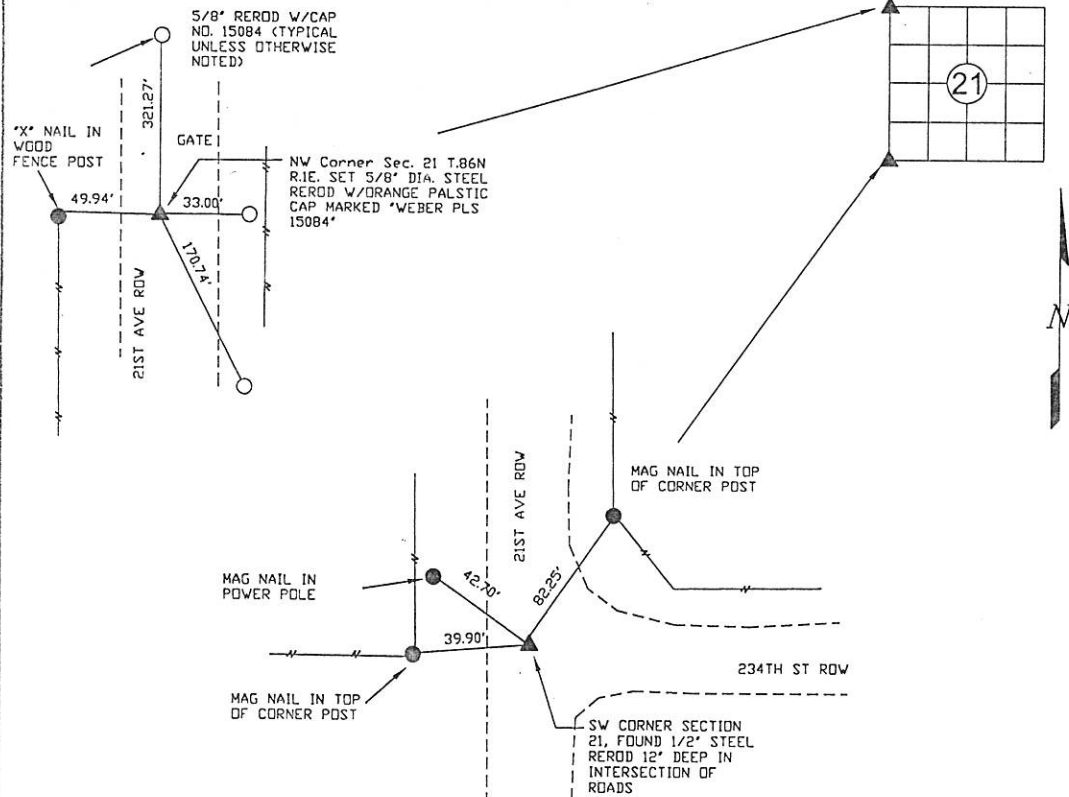
Reason: Plat of Survey of Parcel B in Section 16 & 21, T.86N. R.1E. was prepared showing the two corners indentified below.

SW Corner of Section 21 found 1/2" steel rerod in the intersection of 21st AVE and 234th ST

NW Corner of Section 21, no monumentation found, established corner online from the NW corner and the W 1/4 corner of Section 16 using the same distance between said NW corner and W 1/4 corner from the W 1/4 corner, set 5/8" Dia. rerod w/orange cap marked "WEBER PLS 15084"

PLAN - VIEW

(Show a minimum of three reference ties to durable physical objects, relevant monuments and physical conditions that will enable recovery of the corner.)



I HEREBY CERTIFY THAT THIS LAND SURVEYING DOCUMENT WAS
PREPARED AND THE RELATED SURVEY WORK WAS PERFORMED BY ME OR
UNDER MY DIRECT PERSONAL SUPERVISION AND THAT I AM A DULY
LICENSED LAND SURVEYOR UNDER THE LAWS OF THE STATE OF IOWA.

Michael J. Weber
MICHAEL J. WEBER 14 December 2004
(DATE)

LICENSE NUMBER 15084

MY LICENSE RENEWAL DATE IS DECEMBER 31, 2005

SHEETS COVERED BY THIS SEAL: 1

List Corners to be Indexed

Corner	Sec	Twp	Range
NORTHWEST	21	86N	1E
SOUTHWEST	21	86N	1E



Document 05-224

Book 2 Page 322 Type 06 23 Pages 1
Date 1/17/2005 Time 1:28 PM
Rec Amt \$7.00

PHYLLIS M. GERLACH, RECORDER
JACKSON COUNTY IOWA

PREPARED BY: MICHAEL J. WEBER, WEBER SURVEYNG, 26789 46TH AVE, BERNARD, IA 52032, PH: (563) 879-3586

UNITED STATES PUBLIC LAND SURVEY CORNER CERTIFICATE OF

LAND SURVEY MONUMENTS SITUATED IN SECTION 21, TOWNSHIP 86 NORTH, RANGE 1 EAST
OF THE FIFTH PRINCIPAL MERIDIAN, JACKSON COUNTY, IOWA.
PREVIOUSLY RECORDED NONE

(book, page, document number, etc.)

(Show reason for preparing this certificate, the evidence and detailed procedures used in establishing the corner positions and monumentation found or placed.)

Monument Description and Remarks:

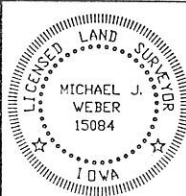
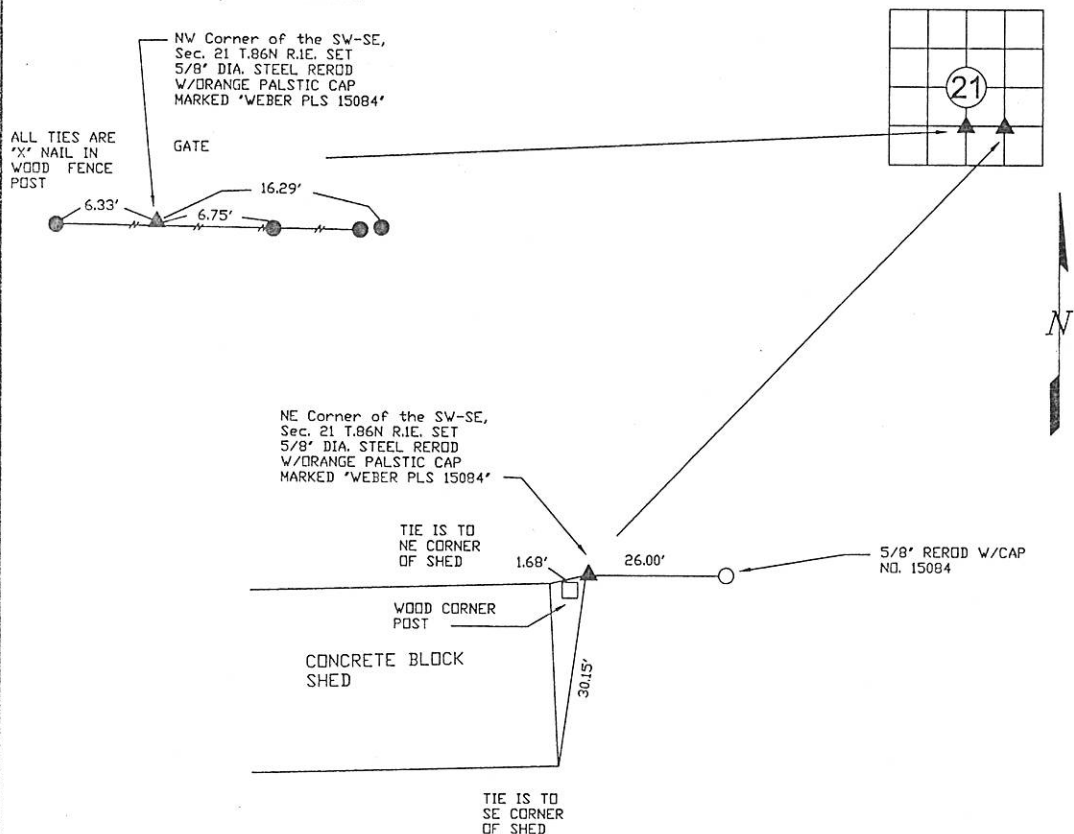
Reason: Plat of Survey of Parcel C in Section 21, T.86N. R.1E. was prepared showing the two corners identified below.

NW Corner of the SW 1/4 of the SE 1/4, Section 21 no monumentation found, established corner online between the N1/4 and the calculated S 1/4 and inline with the East-West occupation fence line, set 5/8" Dia. rerod w/orange cap marked 'WEBER PLS 15084'

NE Corner of the SW 1/4 of the SE 1/4, Section 21 no monumentation found, established corner at longtime established corner post, set 5/8" Dia. rerod w/orange cap marked 'WEBER PLS 15084'

PLAN - VIEW

(Show a minimum of three reference ties to durable physical objects, relevant monuments and physical conditions that will enable recovery of the corner.)



I HEREBY CERTIFY THAT THIS LAND SURVEYING DOCUMENT WAS
PREPARED AND THE RELATED SURVEY WORK WAS PERFORMED BY ME OR
UNDER MY DIRECT PERSONAL SUPERVISION AND THAT I AM A DULY
LICENSED LAND SURVEYOR UNDER THE LAWS OF THE STATE OF IOWA.

Michael J. Weber 5 January 2005
MICHAEL J. WEBER (DATE)

LICENSE NUMBER 15084

MY LICENSE RENEWAL DATE IS DECEMBER 31, 2005

SHEETS COVERED BY THIS SEAL: 1

List Corners to be Indexed

Corner	Sec	Twp	Range
NW CORNER	21	86N	1E
SW 1/4-SE 1/4			
NE CORNER	21	86N	1E
SW 1/4-SE 1/4			



Document 10-12

Book 2 Page 701 Type 15 001 Pages 1
Date 1/04/2010 Time 10:51 AM
Rec Amt \$9.00

ARLENE SCHAUF, RECORDER/REGISTRAR
JACKSON COUNTY IOWA

Prepared by: SCHNEIDER Land Surveying and Planning P.O. Box 128 Farley, Iowa 52046 563-744-3631

UNITED STATES PUBLIC LAND SURVEY CORNER CERTIFICATE OF

Land Survey Monuments situated in Section 21, Township 86 North, Range 1 East
of the Fifth Principal Meridian, Jackson County, Iowa.

Previously recorded (NONE OF RECORD)

(BOOK, PAGE / INST. NO. / CABINET, SLIDE)

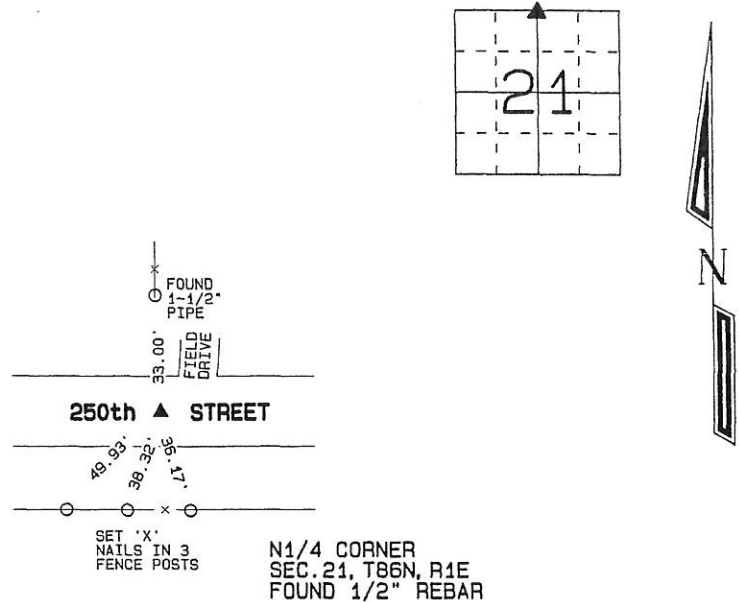
(Show reason for preparing this certificate, the evidence and detailed procedures used in establishing the corner positions and monumentation found or placed.)

Monument Description and Remarks:

A 1/2" REBAR WAS FOUND AT THE N1/4 CORNER OF SECTION 21, T86N, R1E AND TIED.

PLAN - VIEW

(Show a minimum of three reference ties to durable physical objects, relevant monuments and physical conditions that will enable recovery of the corner.)



I hereby certify that this land surveying document was prepared and the related survey work was performed by me or under my direct personal supervision and that I am a duly licensed Land Surveyor under the laws of the State of Iowa.

David P. Schneider 12/31/2009
David P. Schneider P.L.S. #14417 Date:
My license renewal date is December 31, 2011.

Pages or sheets covered by this seal: THIS SHEET ONLY

SCHNEIDER
Land Surveying & Planning

P.O. Box 128 Farley, Iowa 52046
Ph. #563-744-3631 Fax#563-744-3629



List Corners to be Indexed

Corners	Section	Twp	Range
N1/4 CORNER	21	86N	1E

Book 2 Page 701

JOB NO. 1352



Document 16-3336

Book 2016 Page 3336 Type 15 001 Pages 1

Date 9/16/2016 Time 3:22 PM

Rec Amt \$7.00

ARLENE SCHAUF, RECORDER/REGISTRAR
JACKSON COUNTY IOWA

PREPARED BY: MICHAEL J. WEBER, WEBER SURVEYING, LLC, 26789 46TH AVE, BERNARD, IA 52032 (563) 879-4173

UNITED STATES PUBLIC LAND SURVEY CORNER CERTIFICATE OF

LAND SURVEY MONUMENTS SITUATED IN SECTION 21, TOWNSHIP 86 NORTH, RANGE 1 EAST
OF THE FIFTH PRINCIPAL MERIDIAN, JACKSON COUNTY, IOWA.
PREVIOUSLY RECORDED SEE NOTES BELOW

(Book, page, document number, etc.)

(Show reason for preparing this certificate, the evidence and detailed procedures used in establishing the corner positions and monumentation found or placed.)

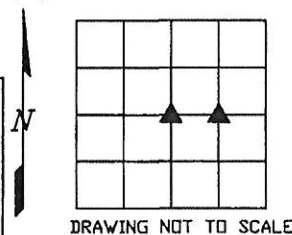
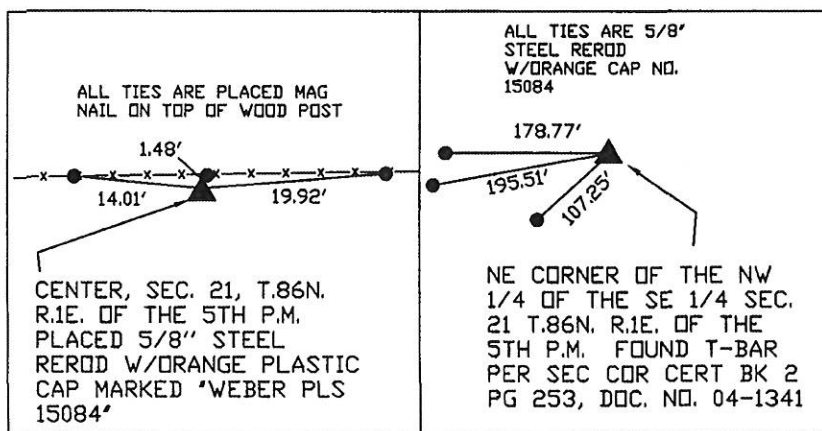
Monument Description and Remarks:

-CENTER, SEC. 21, T.86N. R.1E. OF THE 5TH P.M. PLACED 5/8" STEEL REROD W/ORANGE PLASTIC CAP MARKED 'WEBER PLS 15084'. ESTABLISHED CORNER ON LINE WITH THE NORTH 1/4 AND SOUTH 1/4 CORNERS AT THE INTERSECTION OF THE OCCUPATION FENCE RUNNING EAST AND WEST.

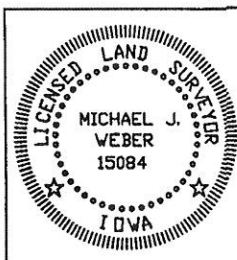
-NE CORNER OF THE NW 1/4 OF THE SE 1/4 SEC. 21 T.86N. R.1E. OF THE 5TH P.M. FOUND T-BAR PER PREVIOUSLY RECORDED IN SECTION CORNER CERTIFICATE IN BOOK 2 PAGE 253, DOC. NO. 04-1341. ESTABLISHED NEW TIES.

(Show a minimum of three reference ties to durable physical objects, relevant monuments and physical conditions that will enable recovery of the corner.)

PLAN - VIEW



DWG. NO. 16044-BURKE



I HEREBY CERTIFY THAT THIS LAND SURVEYING DOCUMENT WAS PREPARED AND THE RELATED SURVEY WORK WAS PERFORMED BY ME OR UNDER MY DIRECT PERSONAL SUPERVISION AND THAT I AM A DULY LICENSED LAND SURVEYOR UNDER THE LAWS OF THE STATE OF IOWA.

Michael J. Weber August 29, 2016
MICHAEL J. WEBER (DATE)

LICENSE NUMBER 15084

MY LICENSE RENEWAL DATE IS DECEMBER 31, 2017

SHEETS COVERED BY THIS SEAL: THIS SHEET

List Corners to be Indexed

Corner	Sec	Twp	Range
CENTER	21	86N	1E
NE COR, NW-SE	21	86N	1E