



Document 09-4374

Book 2 Page 689 Type 15 001 Pages 1
Date 11/10/2009 Time 3:13 PM
Rec Amt \$9.00

ARLENE SCHAUF, RECORDER/REGISTRAR
JACKSON COUNTY IOWA

PREPARED BY: MICHAEL J. WEBER, WEBER SURVEYING, LLC, 26789 46TH AVE, BERNARD, IA 52032 (563) 879-4173

UNITED STATES PUBLIC LAND SURVEY CORNER CERTIFICATE OF

LAND SURVEY MONUMENTS SITUATED IN SECTION 20, TOWNSHIP 86 NORTH, RANGE 1 EAST
OF THE FIFTH PRINCIPAL MERIDIAN, JACKSON COUNTY, IOWA.
PREVIOUSLY RECORDED NONE UNLESS OTHERWISE NOTED
(book, page, document number, etc.)

(Show reason for preparing this certificate, the evidence and detailed procedures used in establishing the corner positions and nonumentation found or placed.)

Monument Description and Remarks:

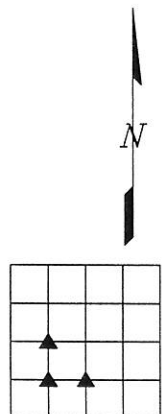
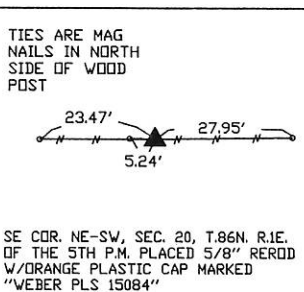
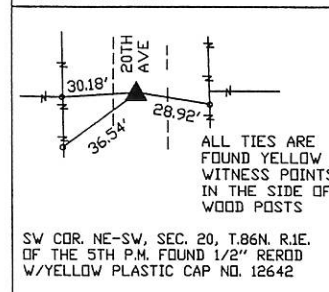
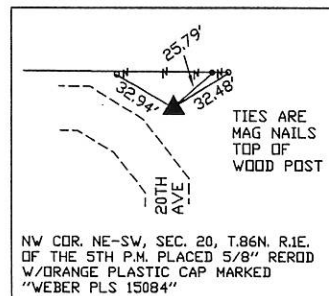
-NW COR. NE-SW, SEC. 20, T.86N. R.1E. OF THE 5TH P.M. PLACED 5/8" REROD W/ORANGE PLASTIC CAP MARKED "WEBER PLS 15084" CORNER ESTABLISHED BY MIDWAY AND ONLINE BETWEEN THE CENTER AND WEST 1/4.

-SW COR. NE-SW, SEC. 20, T.86N. R.1E. OF THE 5TH P.M. FOUND 1/2" REROD W/YELLOW PLASTIC CAP NO. 12642. LOCATION WAS CENTER OF 20TH AVE INLINE WITH FENCELINE EAST AND WEST. FOUND TIES AS SHOWN BELOW.

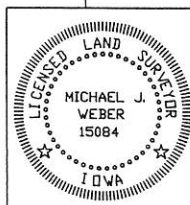
-SE COR. NE-SW, SEC. 20, T.86N. R.1E. OF THE 5TH P.M. PLACED 5/8" REROD W/ORANGE PLASTIC CAP MARKED "WEBER PLS 15084" CORNER ESTABLISHED AT THE INTERSECTION OF THE LINE BETWEEN THE CENTER AND SOUTH 1/4 AND AND THE FENCELINE RUNNING EAST AND WEST.

(Show a minimum of three reference ties to durable physical objects, relevant monuments and physical conditions that will enable recovery of the corner.)

PLAN - VIEW



DWG. NO. JEDLICKA



I HEREBY CERTIFY THAT THIS LAND SURVEYING DOCUMENT WAS PREPARED AND THE RELATED SURVEY WORK WAS PERFORMED BY ME OR UNDER MY DIRECT PERSONAL SUPERVISION AND THAT I AM A DULY LICENSED LAND SURVEYOR UNDER THE LAWS OF THE STATE OF IOWA.

Michael J. Weber *October 22, 2009*
(DATE)

LICENSE NUMBER 15084

MY LICENSE RENEWAL DATE IS DECEMBER 31, 2009

SHEETS COVERED BY THIS SEAL 1 THIS SHEET

List Corners to be Indexed
Corner Sec Twp Range

NW COR. NE-SW 20 86N 1E
SW COR. NE-SW 20 86N 1E
SE COR. NE-SW 20 86N 1E