



Document 09-1214

Book 2 Page 669 Type 15 001 Pages 1  
Date 3/31/2009 Time 4:00 PM  
Rec Amt \$7.00ARLENE SCHAUF, RECORDER/REGISTRAR  
JACKSON COUNTY IOWA

PREPARED BY MICHAEL J. WEBER, WEBER SURVEYING, LLC, 26789 46TH AVE, BERNARD, IA 52032 (563) 879-4173

UNITED STATES PUBLIC LAND SURVEY CORNER CERTIFICATE  
OFLAND SURVEY MONUMENTS SITUATED IN SECTION 18, TOWNSHIP 86 NORTH, RANGE 1 EAST  
OF THE FIFTH PRINCIPAL MERIDIAN, JACKSON COUNTY, IOWA.  
PREVIOUSLY RECORDED NONE UNLESS OTHERWISE NOTED

(book, page, document number, etc.)

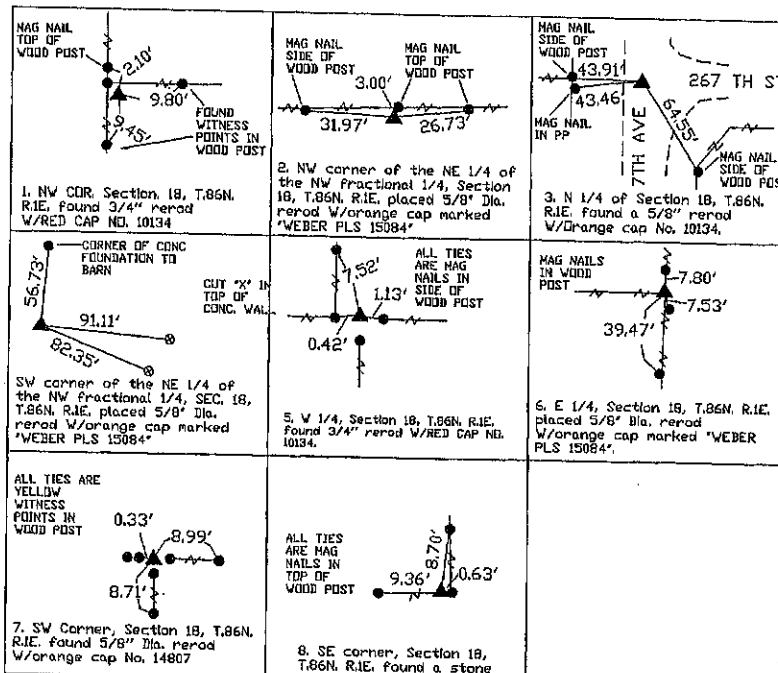
(Show reason for preparing this certificate, the evidence and detailed procedures used in establishing the corner positions and nomenclature found or placed.)

## Monument Description and Remarks:

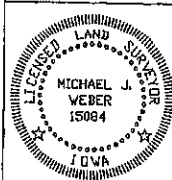
1. NW COR. Section 18, T.86N. R.1E. found 3/4" rerod W/RED CAP NO. 10134 previously recorded in Sec. Cor. Cert Book 1 Page 248, established new ties.
2. NW corner of the NE 1/4 of the NW fractional 1/4, Section 18, T.86N. R.1E. placed 5/8" Dia. rerod W/orange cap marked 'WEBER PLS 15084', established corner online and a proportionate measurement between the N 1/4 and the NW Corner of Section 18.
3. N 1/4 of Section 18, T.86N. R.1E. found a 5/8" rerod W/Orange cap No. 10134.
4. SW corner of the NE 1/4 of the NW fractional 1/4, SEC. 18, T.86N. R.1E. placed 5/8" Dia. rerod W/orange cap marked 'WEBER PLS 15084', established corner by breakdown of the fractional NW 1/4 of Section 18.
5. W 1/4, Section 18, T.86N. R.1E. found 3/4" rerod W/RED CAP NO. 10134.
6. E 1/4, Section 18, T.86N. R.1E. placed 5/8" Dia. rerod W/orange cap marked 'WEBER PLS 15084' established corner midway between the NE & SE corners and inline with the occupation North South fence line.
7. SW Corner, Section 18, T.86N. R.1E. found 5/8" Dia. rerod W/orange cap No. 14807 previously recorded in Sec. Cor. Cert Document No. 2001 2741 of the Jones County Recorder's Office
8. SE corner, Section 18, T.86N. R.1E. found a stone as shown in plat of survey in book 1-D page 108 described as the NW corner of Section 20.

## PLAN - VIEW

(Show a minimum of three reference ties to durable physical objects, relevant monuments and physical conditions that will enable recovery of the corner.)



DWG: PFAB



I HEREBY CERTIFY THAT THIS LAND SURVEYING DOCUMENT WAS PREPARED AND THE RELATED SURVEY WORK WAS PERFORMED BY ME OR UNDER MY DIRECT PERSONAL SUPERVISION AND THAT I AM A DULY LICENSED LAND SURVEYOR UNDER THE LAWS OF THE STATE OF IOWA.

*Michael J. Weber* March 27, 2009  
(DATE)

MICHAEL J. WEBER  
LICENSE NUMBER 15084  
MY LICENSE RENEWAL DATE IS DECEMBER 31, 2009

SHEETS COVERED BY THIS SEAL: \_\_\_\_\_

List Corners to be Indexed		
Corner	Sec	Twp Range
NW COR.	18	86N-1E
NW COR. NE-NW	18	86N-1E
N 1/4 COR.	18	86N-1E
SW COR. NE-NW	18	86N-1E
W 1/4	18	86N-1E
E 1/4	18	86N-1E
SW COR	18	86N-1E
SE COR	18	86N-1E

Book 2 Page 669



Type 15 001

Pages 1

Date 3/04/2025 Time 11:23 AM

Rec Amt \$7.00

PREPARED BY: MICHAEL J. WEBER, WEBER SURVEYING, LLC, 26789 46TH AVE, BERNARD, IA 52032 (563) 879-4173

(book, page, document number, etc.)

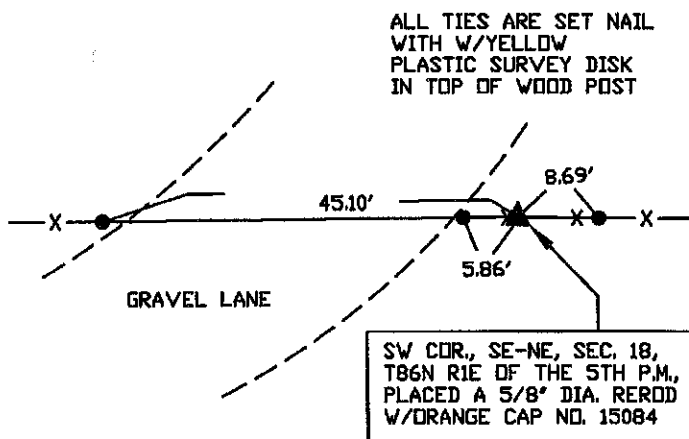
(Show reason for preparing this certificate, the evidence and detailed procedures used in establishing the corner positions and monumentation found or placed.)

-NW COR., SE-NE, SEC. 18, T86N R1E OF THE 5TH P.M., PLACED A 5/8" DIA. REROD W/ORANGE CAP NO. 15084. ESTABLISHED CORNER AT THE THEORETICAL CENTER OF THE NE 1/4 OF SAID SECTION 18

-SW COR., SE-NE, SEC. 18, T86N R1E OF THE 5TH P.M., PLACED A 5/8" DIA. REROD W/ORANGE CAP NO. 15084.. ESTABLISHED CORNER ONLINE AND MIDWAY BETWEEN THE CALCULATED CENTER AND EAST 1/4 COR., OF SAID SECTION 18

(Show a minimum of three reference ties to durable physical objects, relevant monuments and physical conditions that will enable recovery of the corner.)

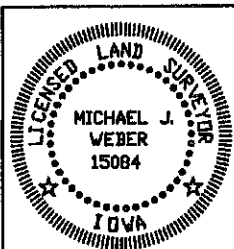
## PLAN - VIEW



**DRAWING NOT TO SCALE**

ALL TIES ARE SET NAIL  
WITH W/YELLOW  
PLASTIC SURVEY DISK  
IN TOP OF WOOD POST

NW COR., SE-NE, SEC. 18,  
T86N R1E OF THE 5TH P.M.,  
PLACED A 5/8" DIA. REROD  
W/ORANGE CAP NO. 15084



I HEREBY CERTIFY THAT THIS LAND SURVEYING DOCUMENT WAS PREPARED AND THE RELATED SURVEY WORK WAS PERFORMED BY ME OR UNDER MY DIRECT PERSONAL SUPERVISION AND THAT I AM A DULY LICENSED LAND SURVEYOR, UNDER THE LAWS OF THE STATE OF IOWA.

Michael  
MICHAEL J. WEBER

LICENSE NUMBER 15084

**MY LICENSE RENEWAL DATE IS DECEMBER 31, 2025**

SHEETS COVERED BY THIS SEAL : THIS SHEET

List Corners to be Indexed	
Corner	Sec Two Range

SW COR., SE-NE 18-86-1E

NW CDR,, SE-NE 18-86-1E

DWG. NO. 24136